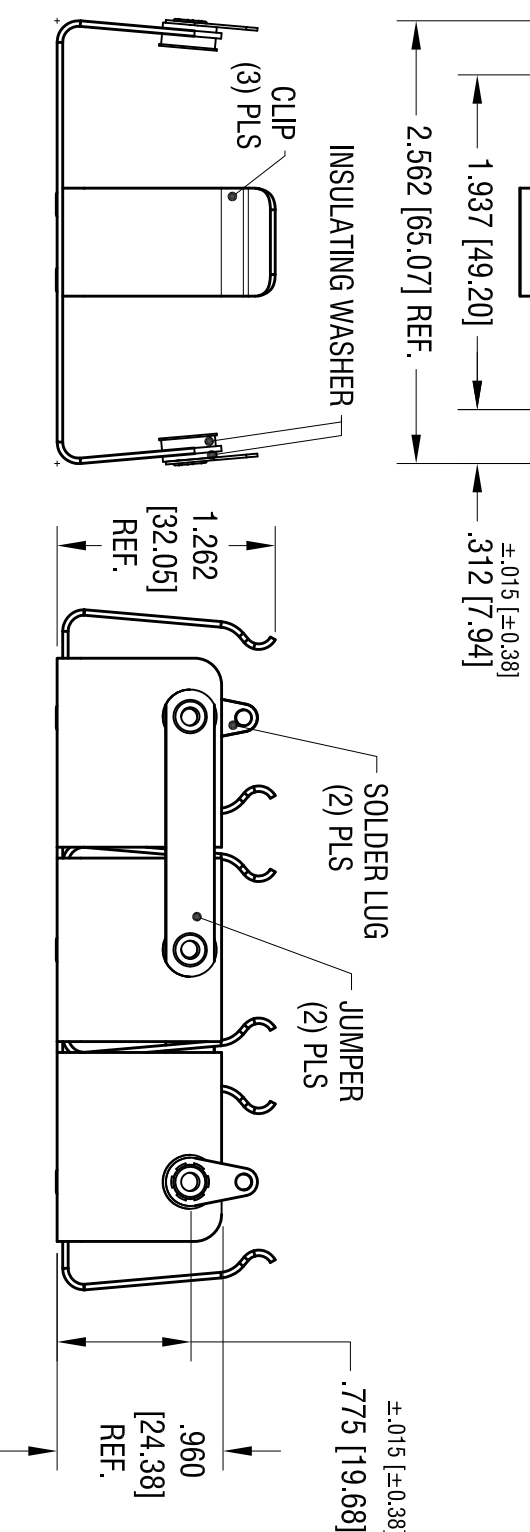
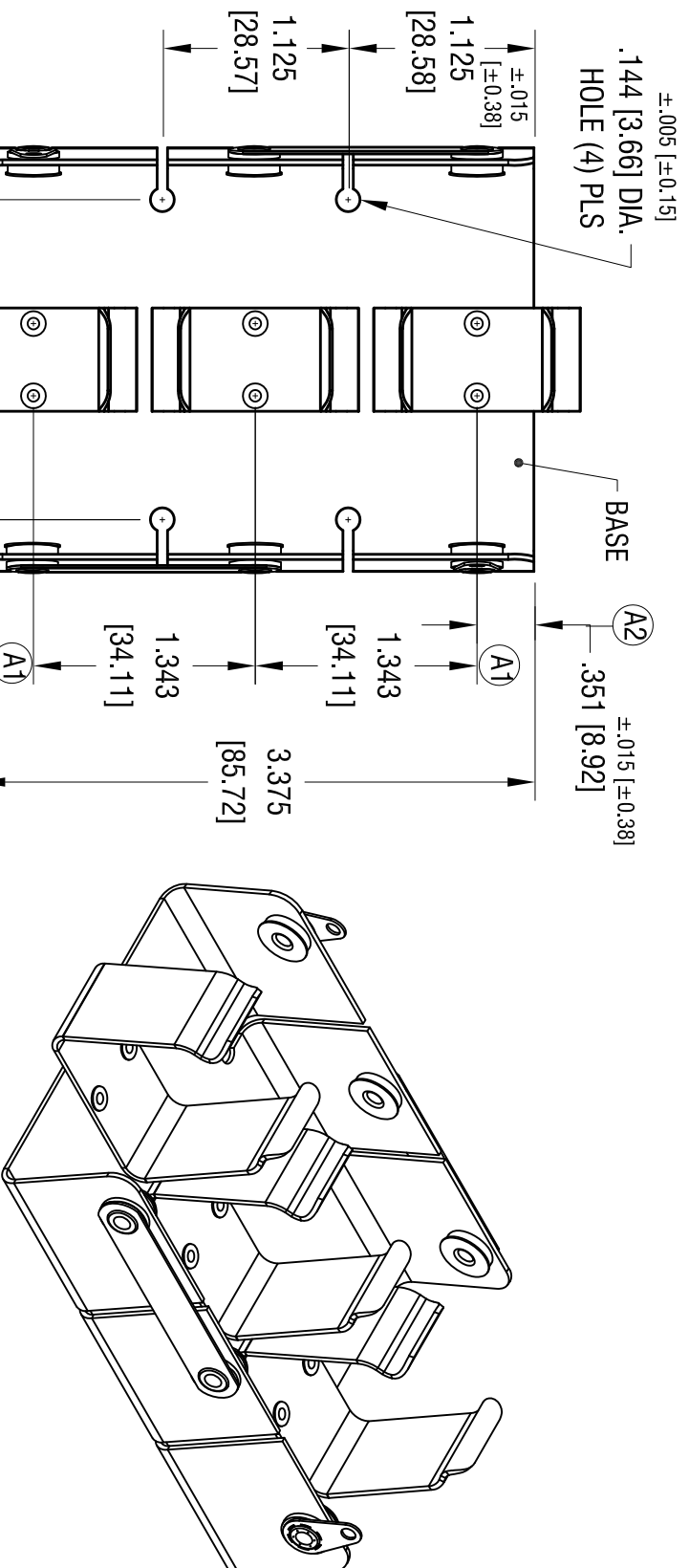


DATE	DESCRIPTION	REV.
5.11.16	CHANGE AS PER ECN 16-056	A
(A1)	WAS 1.350, (A2) WAS 337	



- NOTES:
1. BASE: MAT'L - .032 [.81] THK ALUMINUM
 2. CLIP: MAT'L - .032 [.81] THK ALUMINUM
 3. SOLDER LUG: MAT'L - BRASS
FINISH - TIN PLATE
 4. JUMPER: MAT'L - BRASS
FINISH - TIN PLATE

KEYSTONE ELECTRONICS CORP. www.keyelco.com • ASTORIA, N.Y. 11105-2017 • Tel (718) 956-8900			
PART NAME			
BATTERY HOLDER, (3) 'D' CELLS			
MATERIAL			
AS NOTED			
FINISH			
AS NOTED			
TOLERANCES	INCH	[MM]	CODE
DECIMAL	± .010	[± 0.25]	C
ANGULAR	± 1°		
UNLESS OTHERWISE SPECIFIED			
DRN BY	BOONE	DATE	7.16.07
APP'D	LN	SCALE	.9X

THIS DOCUMENT IS THE PROPERTY OF KEYSTONE ELECTRONICS CORP. AND SHALL NOT BE REPRODUCED, DISTRIBUTED OR USED AS A BASIS FOR MANUFACTURE WITHOUT PRIOR WRITTEN PERMISSION FROM KEYSTONE ELECTRONICS CORP.

153