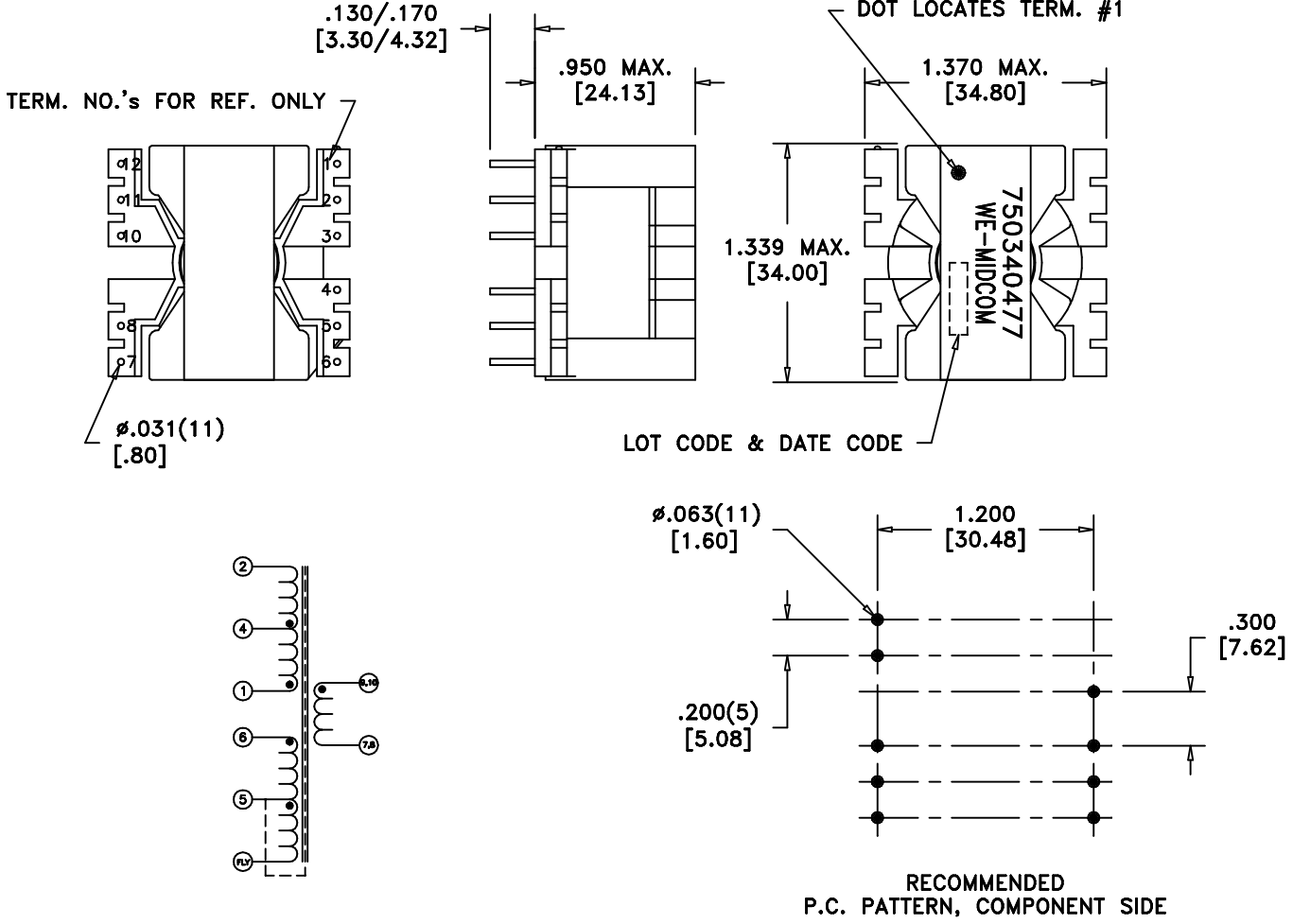



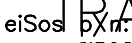
CUSTOMER TERMINAL	RoHS	LEAD(Pb)-FREE
Sn96%Ag4%	Yes	Yes



ELECTRICAL SPECIFICATIONS @ 25°C unless otherwise noted:

- D.C. RESISTANCE (@20°C):** 2-4, .15 ohms max. 1-4, .1 ohms max.
5-6, .3 ohms max. 5-FLY, .2 ohms max.
9-8, .15 ohms max.
- DIELECTRIC RATING;** 1000VDC, 1 minute tested by applying 1200VDC for 1 second, Pri to Sec
500VDC, 1 minute tested by applying 650VDC for 1 second, P4-P5
- INDUCTANCE:** 550uH ±5%, 60kHz, 1VAC, 1-2, Ls
- LEAKAGE INDUCTANCE:** 6uH Max 4.5uH typ, 60kHz, 1VAC, tie p5 thru p10, 1-2, Ls
- TURNS RATIO:** (2-4):(FLY-5) = 3.2:1, ±2%. (4-1):(FLY-5) = 3.2:1, ±2%.
(5-6):(FLY-5) = 2.2:1, ±2%. (7-9):(FLY-5) = 3.4:1, ±2%.
(8-10):(FLY-5) = 3.4:1, ±2%.

DETAILS SUBJECT TO CHANGE

Unless otherwise specified: Tolerances: Angles: ±1° Fractions: ±1/64 Decimals: ±.005[.13]	DRAWING TITLE		 www.midcom-inc.com	DRAWING NO. 750340477	REV. 01 9/09
	eiSos  TRANSFORMER 750340477				
This drawing is dual dimensioned. Dimensions in brackets are in millimeters.		REVISIONS: SEE SHEET 1			

DWG.# 750340477