

## Han Brid-RJ45 C-M RJ Industrial AWG26

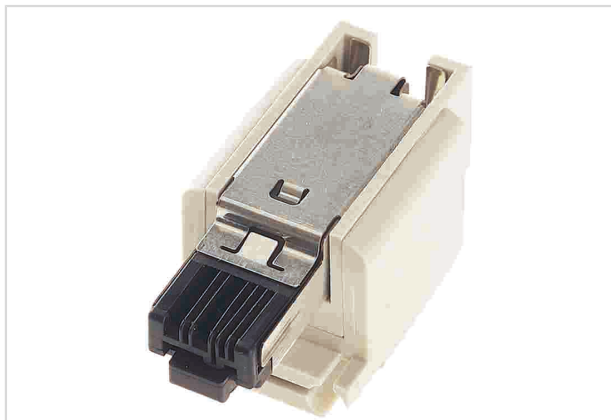


Image is for illustration purposes only. Please refer to product description.

Part number	09 12 003 3013
Specification	Han Brid-RJ45 C-M RJ Industrial AWG26
HARTING eCatalogue	<a href="https://b2b.harting.com/09120033013">https://b2b.harting.com/09120033013</a>

### Identification

Category	Inserts
Series	Han-Brid®
Identification	Han-Brid® RJ45 C
Specification	hybrid network connector

### Version

Gender	Male
Size	3 A
Number of contacts	2
further contacts	+ RJ45
Details	With RJ Industrial

### Technical characteristics

Conductor cross-section	0.12 mm <sup>2</sup> Stranded
Conductor cross-section	AWG 26 Stranded
Wire outer diameter	≤1.6 mm
Rated current	10 A
Rated voltage	24 V
Rated impulse voltage	0.8 kV
Pollution degree	3
Transmission characteristics	Cat. 5 Class D up to 100 MHz
Data rate	10 Mbit/s 100 Mbit/s



Pushing Performance  
Since 1945

## Technical characteristics

Insulation resistance	>10 <sup>10</sup> Ω
Limiting temperature	-40 ... +70 °C
Mating cycles	≥500

## Material properties

Material (insert)	Polycarbonate (PC)
Colour (insert)	RAL 7032 (pebble grey)
Material flammability class acc. to UL 94	V-0
RoHS	compliant
ELV status	compliant
China RoHS	e
REACH Annex XVII substances	Not contained
REACH ANNEX XIV substances	Not contained
REACH SVHC substances	Not contained
California Proposition 65 substances	Yes
California Proposition 65 substances	Lead Nickel
Requirement set with Hazard Levels	R26

## Specifications and approvals

Specifications	IEC 61984
UL / CSA	UL 1977 ECBT2.E235076 CSA-C22.2 No. 182.3 ECBT8.E235076

## Commercial data

Packaging size	10
Net weight	41.9 g
Country of origin	Romania
European customs tariff number	85366990
eCl@ss	27440205 Contact insert for industrial connectors