

LF Series Precision Snap-acting Reset Switches



Features/Benefits

- Low operating force
- Long life
- Compact design
- High electrical ratings

Typical Applications

- Pumps
- Furnace controls



Specifications

CONTACT RATING: See chart on next page
 ELECTRICAL LIFE: 100,000 cycles at 5 Amps @ 250
 INSULATION RESISTANCE: 1,000 Meg Ohms Min.
 DIELECTRIC STRENGTH: 1,000 V RMS min. @ sea
 OPERATING TEMPERATURE: -40 C to 95 C
 OPERATING FORCE: see chart on next page
 MOUNTING: 2-56 screws, torque 2.3 in/ lbs max (not included)

Materials

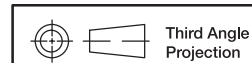
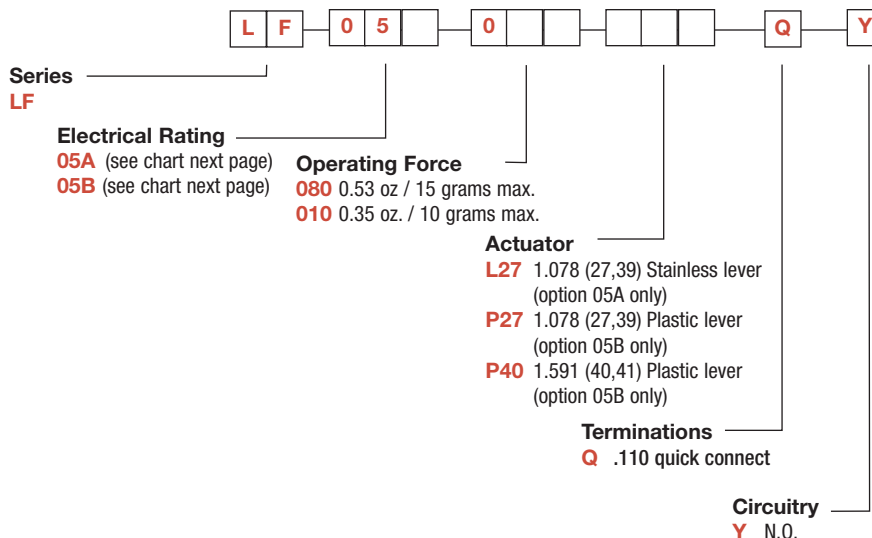
SWITCH HOUSING: 6/6 nylon or PBT 94V0
 ACTUATOR BUTTON: Thermoset 05A option only
 SPRING: Stainless steel 05B option
 MOVABLE CONTACT: Fine silver or silver/nickel
 STATIONARY CONTACT: Fine silver on copper alloy
 LEVER: 05A option stainless steel
 05B option PBT 94V0



Snap-acting

Build-A-Switch

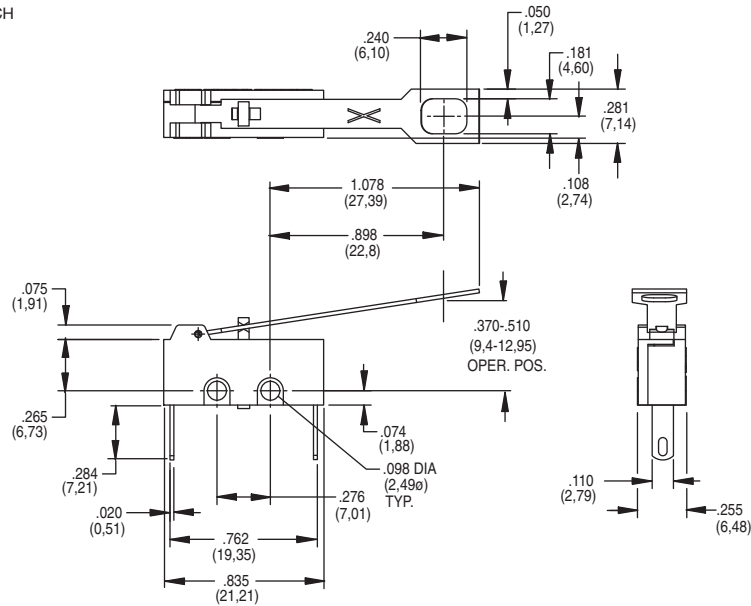
To order, simply select desired option from each category and place in the appropriate box. Available options are shown and described on page K-63. For additional options not shown in catalog, consult Customer Service Center.



Dimensions are shown: Inch (mm)
 Specifications and dimensions subject to change

LF Series Precision Snap-acting Reset Switches

LF PRECISION SNAP-ACTING RESET SWITCH



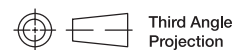
ELECTRICAL RATING

| Option Code | RoHS Compliant * | RoHS Compatible * | Electrical Rating | | |
|-------------|------------------|-------------------|-------------------|-----------------------------|--|
| | | | Moveable Contact | Stationary Contact | Electrical Rating |
| 05A | Yes | Yes | Fine Silver | Fine Silver on copper alloy | 5 Amps @ 250VAC (UL/CSA) 2 Amps @ 480VAC (UL/CSA) 1/2 @ 480VAC (UL/CSA) 5 (1) @ 250VAC-10E3 T90 (VDE) |
| 05B | Yes | Yes | Silver / Nickel | Fine Silver on copper alloy | 5 Amps @ 125/250 VAC (UL/CSA) 5 (1) @ 250VAC-10E3 T90 (VDE) 1/8 HP @ 125 VAC 1/4 HP @ 250 VAC |

All models with all options.

OPERATING FORCE & ACTUATOR

| Switch Characteristic | | | |
|-----------------------|-----------------------------------|--------------------|---------------------|
| Option Code | Maximum Operate Force oz/grams | Operating Position | Differential Travel |
| L27 | 0.53 / 15 | .398 ± .05 | .130 ± .030 |
| P27 | 0.35 / 10 | .398 ± .05 | .130 ± .030 |
| P40 | 0.35 / 10 | .500 ± .05 | .140 ± .030 |



Dimensions are shown: IN (mm)
Specifications and dimensions subject to change



K

Snap-acting

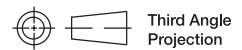
LF Series Precision Snap-acting Reset Switches

ACTUATOR



K

Snap-acting



Third Angle
Projection

*Dimensions are shown: IN (mm)
Specifications and dimensions subject to change*