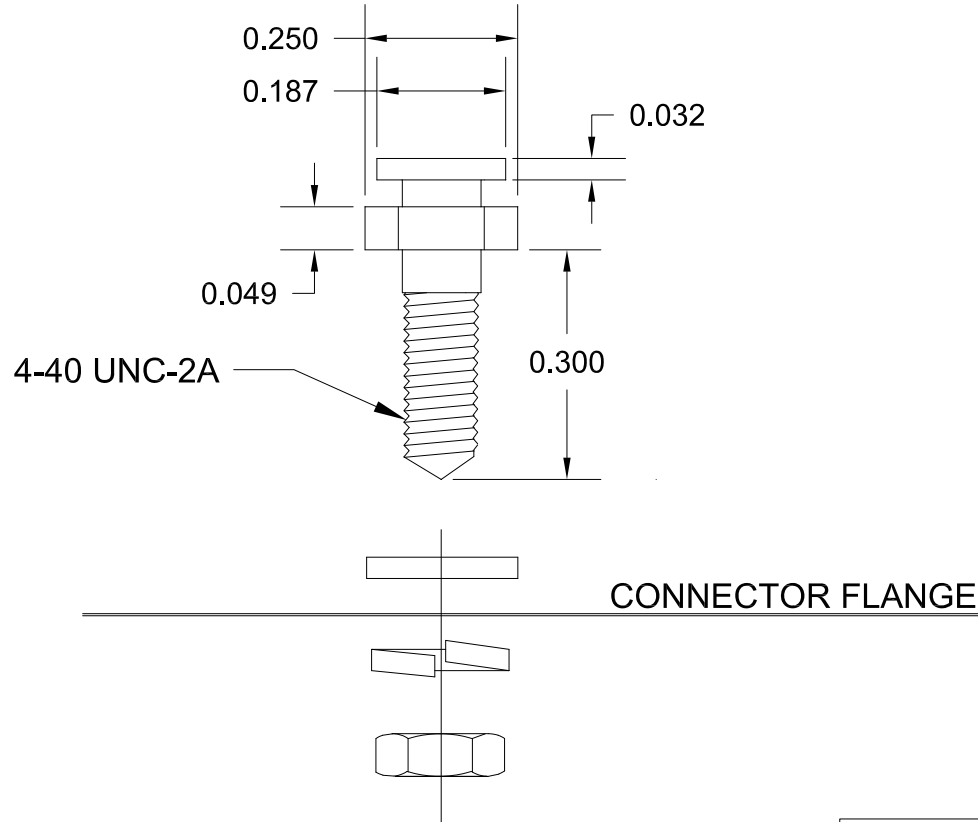


MATERIALS AND FINISH:

SLIDE LOCK POST: STEEL, NICKEL PLATED  
 FLAT WASHER: STEEL, NICKEL PLATED  
 LOCK WASHER: STEEL, NICKEL PLATED  
 4-40 NUT: STEEL, NICKEL PLATED



KIT INCLUDES:  
 (2X) #4-40 SLIDE LOCK POSTS  
 (2X) FLAT WASHERS  
 (2X) LOCK WASHERS  
 (2X) #4-40 NUTS

160-000-005R03Y

1 = KIT (ALL COMPONENTS)

For back shell assembly applications:  
 ONLY use the slide lock posts  
 DO NOT use the flat washers, lock washers, and #4-40 nuts

RoHS COMPLIANT

UNITS = inch

DO NOT SCALE FROM DRAWING



THESE DRAWINGS AND SPECIFICATIONS ARE THE PROPERTY OF NorComp AND SHALL NOT BE REPRODUCED, COPIED OR USED AS THE BASIS FOR THE MANUFACTURE OR SALE OF APPARATUS WITHOUT WRITTEN PERMISSION.

DRAWN:  
 W. ROBBINS

DATE:  
 09/16/2005

NorComp

SCALE: NTS	SHEET 1	OF 1	REV 4
DWG NO.		160-000-005R03Y	