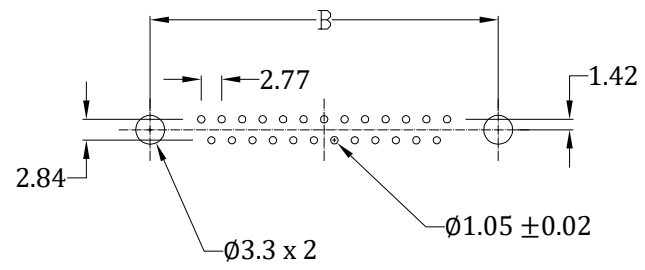
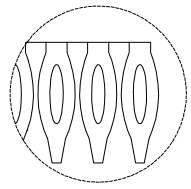
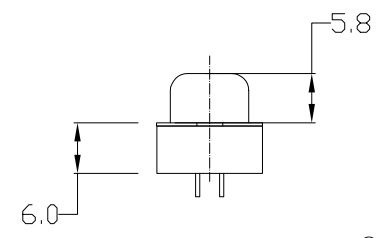
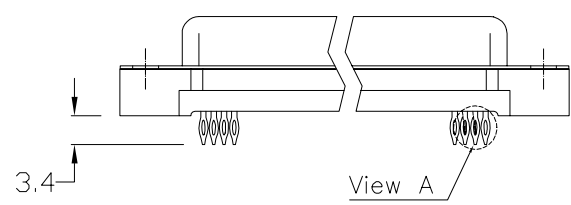
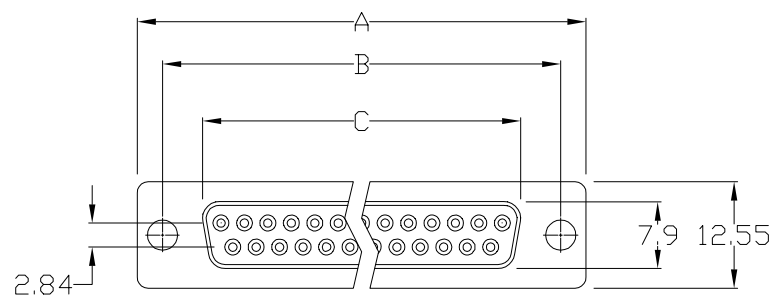


**Dimensions (mm)**

Size	A	B	C
09	30.81	24.99	16.33
15	39.20	33.30	24.70
25	53.05	47.04	38.40
37	69.40	63.50	54.80



Recommended PCB Layout

**Material:**

Insulator: Nylon 6T, UL94V-0, 260°C Process Temp, Black  
 Contact: Phosphor Bronze  
 Shell: Nickel Plated Steel

**Electrical:**

Current Rating: 5 AMPS  
 Contact Resistance: 20 mOhms Max.  
 Insulation Resistance: 1000 MOhms Min.  
 Working Voltage: 250V  
 Operating Temperature: -55° C TO +125° C

**1 9 1 - Y Y Y - 2 2 3 R Y Y Y**

- Series**
- Position**
  - 009
  - 015
  - 025
  - 037
- Gender**
  - 2 = Female
- Termination**
  - 2 = Press Fit
- Shell Plating**
  - 3 = Nickel
- Hardware Options**
  - 00 = No Hardware
  - 55 = 4-40 Insert
  - 56 = 4-40 Insert with Board Locks
  - 57 = 4-40 Standoff with Board Locks
  - 59 = 4-40 Standoff
- Plating Options**
  - 1 = Gold Flash mating area, Tin plated tails
  - 2 = 30µ" Gold mating area, Tin plated tails

RoHS COMPLIANT

UNITS = mm

DO NOT SCALE FROM DRAWING



THESE DRAWINGS AND SPECIFICATIONS ARE THE PROPERTY OF NorComp AND SHALL NOT BE REPRODUCED, COPIED OR USED AS THE BASIS FOR THE MANUFACTURE OR SALE OF APPARATUS WITHOUT WRITTEN PERMISSION.

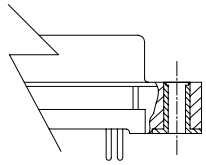
DRAWN: Pam Jenkins  
 DATE: 9/15/2003

**Tolerance**  
 X. ±0.38  
 .X ±0.25  
 .XX ±0.13

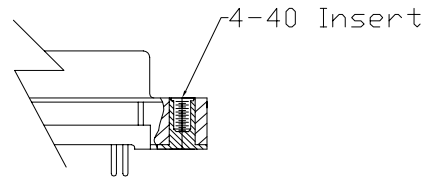
**NorComp**

SCALE: NTS  
 SHEET 1 OF 2  
 REV 7  
 DWG NO. 191-YYY-223RYYY

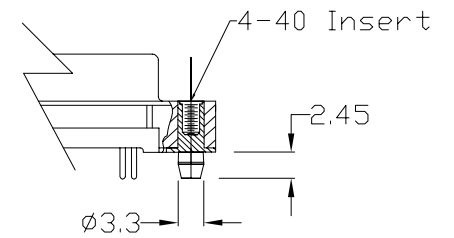
00 =  $\phi$ 3.05 THRU HOLE



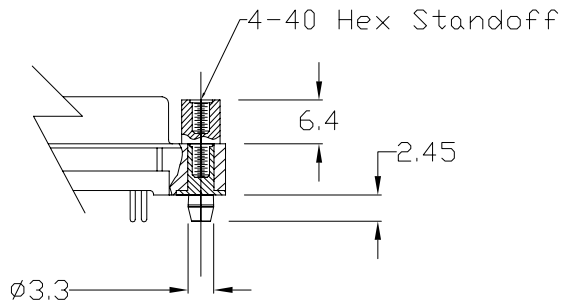
55 = 4-40 INSERT



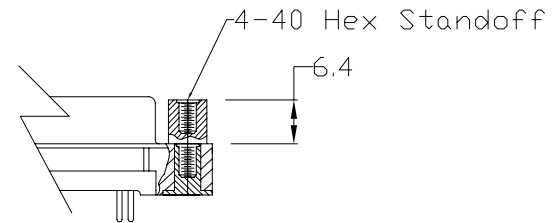
56 = 4-40 INSERT WITH BOARD LOCK



57 = 4-40 STANDOFF WITH BOARD LOCKS



59 = 4-40 STANDOFF



RoHS COMPLIANT

UNITS = mm

DO NOT SCALE FROM DRAWING



THESE DRAWINGS AND SPECIFICATIONS ARE THE PROPERTY OF NorComp AND SHALL NOT BE REPRODUCED, COPIED OR USED AS THE BASIS FOR THE MANUFACTURE OR SALE OF APPARATUS WITHOUT WRITTEN PERMISSION.

DRAWN:  
Pam Jenkins

DATE:  
9/15/2003

Tolerance

X.  $\pm$ 0.38  
.X  $\pm$ 0.25  
.XX  $\pm$ 0.13

NorComp

SCALE:  
NTS

SHEET OF  
2 2

REV  
7

DWG NO.

191-YYY-223RYYY