

DESCRIPTION: VERTICAL - HIGH PROFILE - STAMPED

DIMENSIONS: mm

NUMBER OF CONTACTS	A	B	C	D
15	30.80	24.99	16.34	19.20
26	39.20	33.32	24.70	27.70

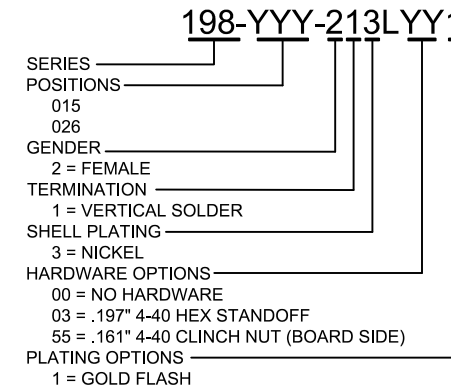
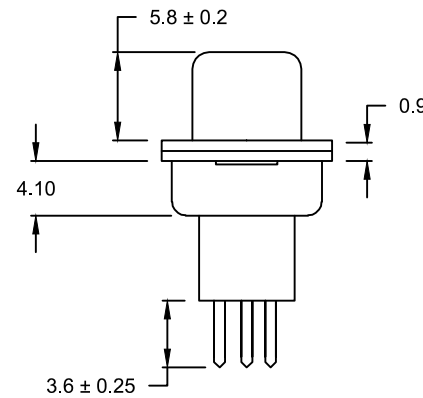
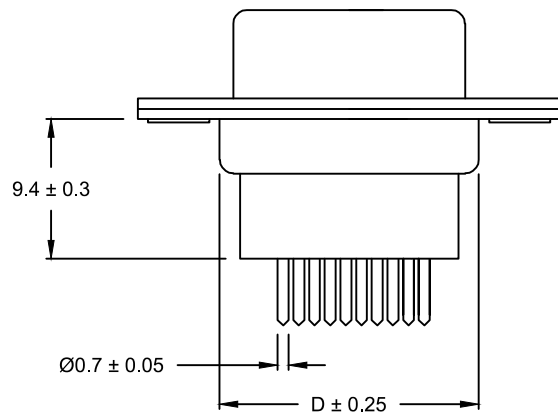
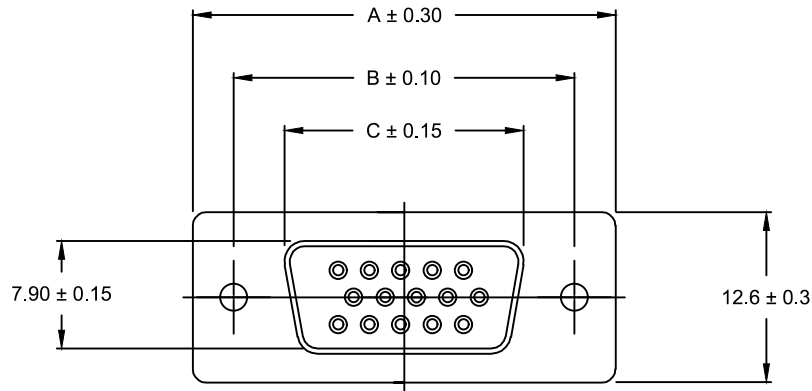
SPECIFICATIONS:

ELECTRICAL:

INSULATOR RESISTANCE: 1000 MΩ MIN.  
 WORKING VOLTAGE: 250V  
 OPERATING TEMPERATURE: -50°C TO +100°C  
 CONTACT RESISTANCE: 15 mΩ MAX.  
 CONTACT AMPERAGE: 5 AMPS

MATERIALS:  
 CONTACTS:

BRASS  
 GOLD FLASH IN MATING AREA  
 TIN PLATING ON TAIL ENDS  
 SHELL  
 INSULATOR: STEEL, NICKEL PLATED  
 PBT, UL94-V0



RoHS COMPLIANT

UNITS = mm

DO NOT SCALE FROM DRAWING



THESE DRAWINGS AND SPECIFICATIONS ARE THE PROPERTY OF NorComp AND SHALL NOT BE REPRODUCED, COPIED OR USED AS THE BASIS FOR THE MANUFACTURE OR SALE OF APPARATUS WITHOUT WRITTEN PERMISSION.

DRAWN: P. JENKINS

DATE: 09/15/2005

NorComp

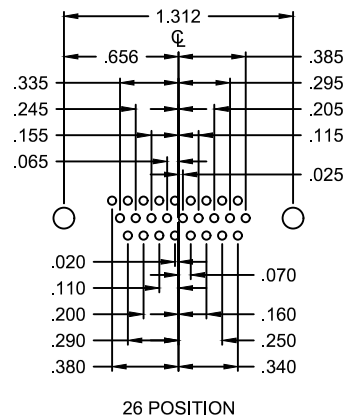
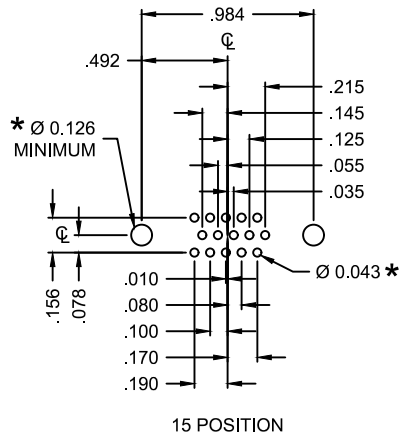
SCALE: NTS

SHEET 1 OF 3

REV 2

DWG NO.

198-YYY-213LYY1



HOLE PATTERN SHOWN  
ARE FOR FEMALE

UNITS = inch

\* TYP.  
SUGGESTED SIZE  
MAY NOT BE SUITABLE FOR ALL APPLICATIONS

RoHS COMPLIANT

UNITS = inches

DO NOT SCALE FROM DRAWING



THESE DRAWINGS AND SPECIFICATIONS ARE THE PROPERTY OF NorComp AND SHALL NOT BE REPRODUCED, COPIED OR USED AS THE BASIS FOR THE MANUFACTURE OR SALE OF APPARATUS WITHOUT WRITTEN PERMISSION.

DRAWN:  
P. JENKINS

DATE:  
09/15/2005

*NorComp*

SCALE:  
NTS

SHEET OF  
2 3

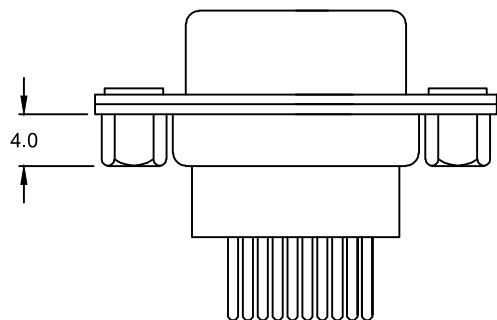
REV  
2

DWG NO.

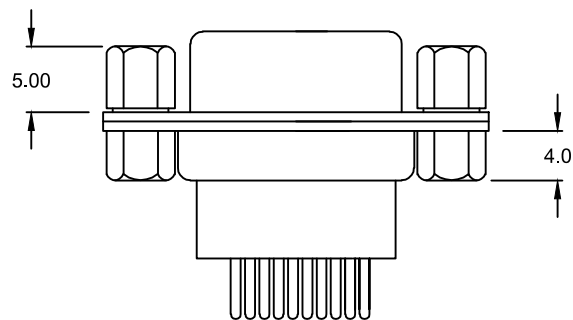
198-YYY-213LYY1

HARDWARE OPTIONS:

55 = #4-40 CLINCH NUT (BOARD SIDE)



03 = #4-40 HEX STANDOFF



RoHS COMPLIANT

UNITS = mm

DO NOT SCALE FROM DRAWING



THESE DRAWINGS AND SPECIFICATIONS ARE THE PROPERTY OF NorComp AND SHALL NOT BE REPRODUCED, COPIED OR USED AS THE BASIS FOR THE MANUFACTURE OR SALE OF APPARATUS WITHOUT WRITTEN PERMISSION.

DRAWN:  
P. JENKINS

DATE:  
09/15/2005

*NorComp*

SCALE:  
NTS

SHEET OF  
3 3

REV  
2

DWG NO.

198-YYY-213LYY1