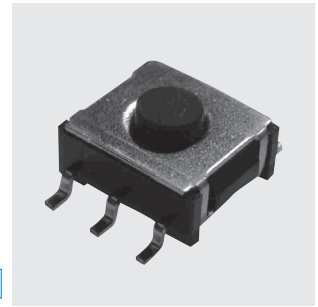


SMT1

Surface Mount Tactile Switches

Washable



RoHS Compliant

■ Features

1. Compatible With Lead-Free, Reflow Soldering

Heat-resistance resin for lead-free soldering.

2. Washable

3. 180° Symmetric Terminal Pin Layout.

4. Anti-Static Electricity

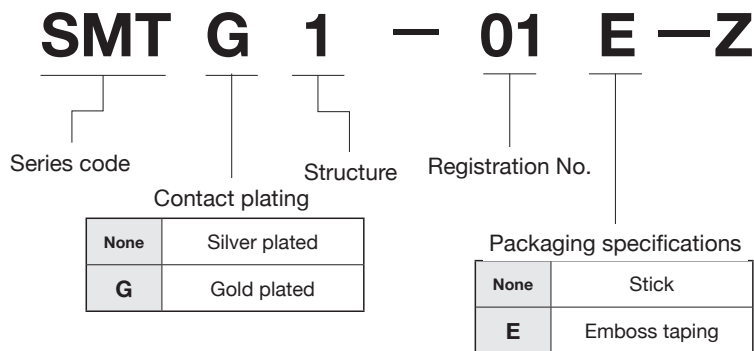
Ground terminal is provided to prevent damage to element caused by static electricity.

5. Metal contact for sharp tactile feel.

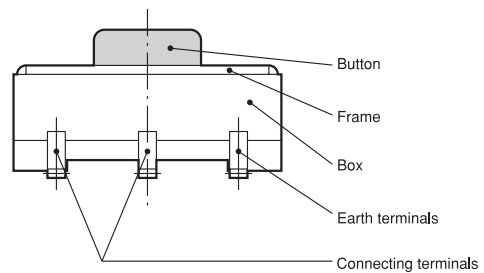
■ Specifications

Contact plating		Silver plated	Gold plated
Rating	Max.	1VA Max. (50mA max.48VDC max.)	
	Min.	0.5mA 20mVDC	10μA 20mVDC
Initial contact resistance		100mΩ Max. {1.5mA 200μVAC at 1.96N [200gf] force}	
Dielectric strength		250VAC 1 minute	
Insulation resistance		100MΩ min.	(100VDC)
Electrical life		1,000,000 operations	
Stroke		0.5±0.3 mm	
Operating force		1.96±0.98N	
Operating temperature range		-25~+70°C	
Storage temperature range		-40~+70°C	

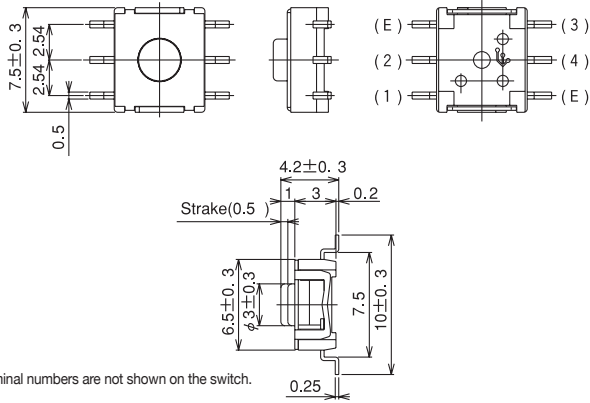
■ Part Numbering



■ Structure



SPST



Terminal numbers are not shown on the switch.

Part No.	Switching function		Circuit diagrams
		Push 	
SMT1-01-Z SMTG1-01-Z	OFF	(ON)	
Connecting terminals	—	(2) (1) (3) (4)	

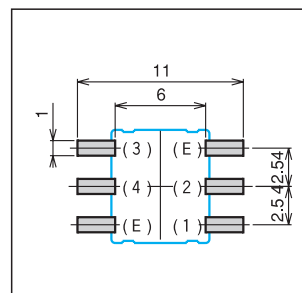
(ON) : Momentary

Table of Part Numbers

Contact plating	Part No.
Silver plated	SMT1-01-Z SMT1-01E-Z
Gold plated	SMTG1-01-Z SMTG1-01E-Z

Pad Layouts

(Top view)



Terminal (E) to be connected to Ground. Terminal (E) is connected to the metal frame.

Soldering Specifications

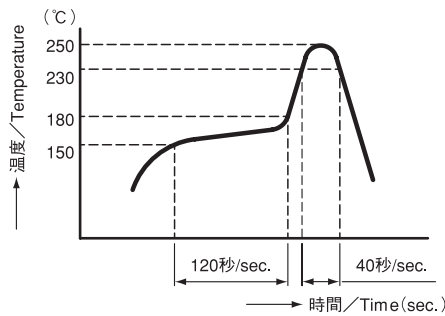
(1) Manual Soldering

Device : Soldering iron

① 380°C ±10°C; 3±0.5 seconds

(2) Reflow Soldering

Device : Inline or batch system



• Apply reflow soldering only once

Flux Cleaning Refer to P. 225.

Packaging Specifications

Stick specification	Emboss taping specification
<p>50 pcs/stick SMT1-01-Z SMTG1-01-Z Ø=400</p>	<p>1,000 pcs/reel SMT1-01E SMTG1-01E</p>

Minimum packaging quantity for reel packaging is 1,000pcs per reel.