

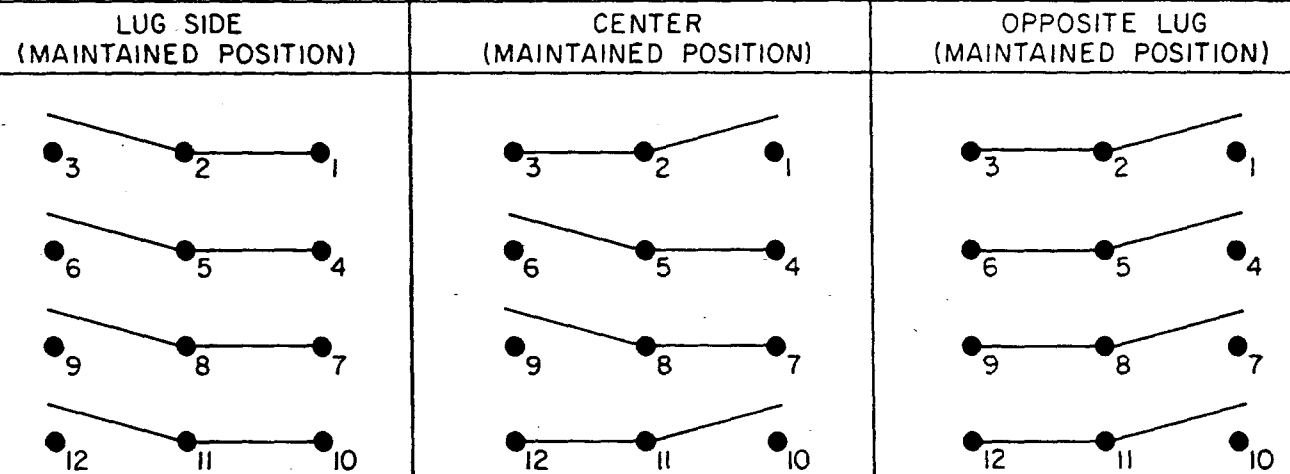
MICRO SWITCH
 FREEPORT ILLINOIS U.S.A.
 A DIVISION OF HONEYWELL
 FED. MFG. CODE 91929

**SWITCH - TOGGLE
 FLUSH KEY**

CATALOG LISTING
4TP201-12

THIS DRAWING COVERS A PROPRIETARY ITEM AND IS THE PROPERTY OF MICRO SWITCH, A DIVISION OF HONEYWELL. THIS DRAWING IS NOT TO BE COPIED OR USED WITHOUT THE APPROVAL OF MICRO SWITCH.

CIRCUIT DIAGRAM

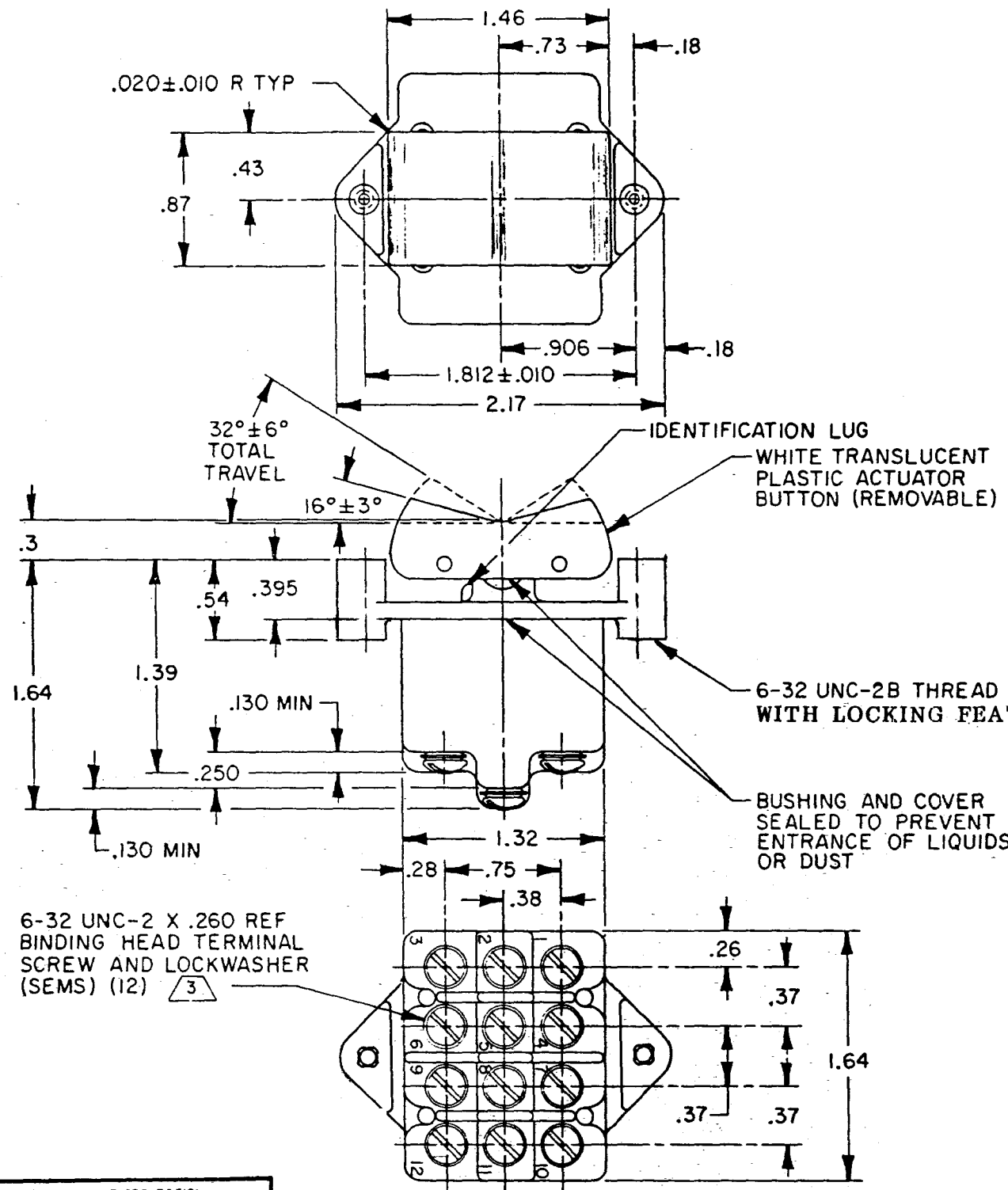


ELECTRICAL DATA

L191 15A 125, 250, 277 VAC
 1/2HP 125 VAC
 1HP 250, 277 VAC
 5A 125 VAC "L"



DRAWING NUMBER: 4TP201-12
 PAGE 1 OF 1
 ISSUE: 6
 REVISIONS:
 A: 056164 J A P 6 MAR 85
 B: 060084 S. J. S. 22 AUG 86
 C: 077897 15 JUN 94
 D: 79047 S A D 12 JAN 95
 E: 94416 29 NOV 89
 CHECKED: C E B 3 FEB 82
 DRAWN: J A P 27 OCT 81
 FORMTEK FD-32894-C
 REPLACES: PR-10585
 RELEASE NO.: PR-10585



- NOTES**
- 1 - MICRO SWITCH CATALOG LISTING MARKED ON SIDE OF SWITCH
 - 2 - THESE SWITCHES WILL WITHSTAND TEMPERATURE OF 160°F
 - 3 - SCREWS FURNISHED UNASSEMBLED

THIRD ANGLE PROJECTION

SCALE FULL

DO NOT SCALE PRINT

TOLERANCES

APPLY TO DESIGN UNITS. CONVERSIONS ARE ONLY FOR REFERENCE. UNLESS NOTED, TOLERANCES ARE:

NO. PLACES	DI.	TOL.	DI.	TOL.
	mm	mm/in	in	mm/in
NO PLACES	X	1/.04	X	0.01/02
ONE PLACE	X, X	0.4/016	X, X	0.06/015
TWO PLACES	X, X	0.15/006	X, X	0.13/005
THREE PLACES	X, X, X		X, X, X	

DESIGN UNITS: SI METRIC US CUSTOMARY

WEIGHT .22 LB EST.