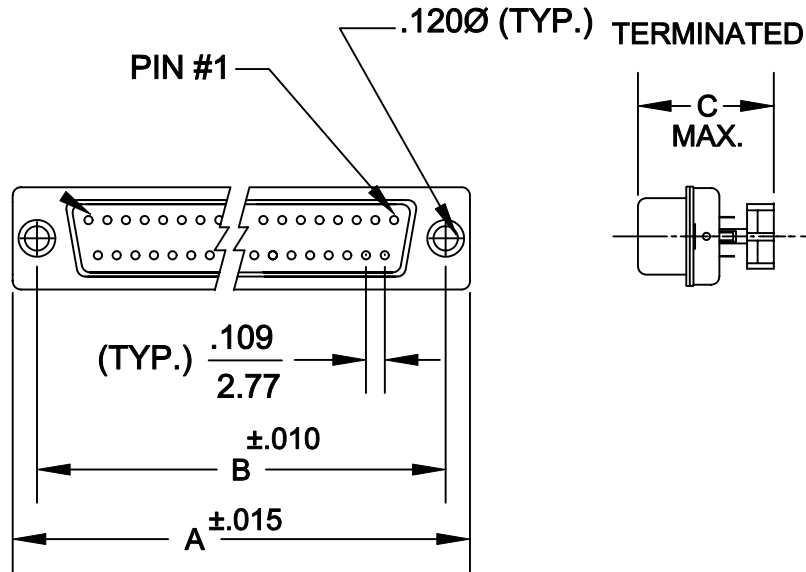
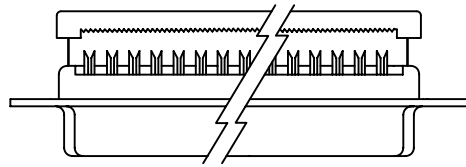


**DESCRIPTION: LOW PROFILE FLAT RIBBON CONNECTOR**



	A	B	C NO S/R	C WITH S/R
9	1.213 30.81	.984 25.00	.610 15.49	.730 18.54
15	1.541 39.14	1.312 33.33	.610 15.49	.730 18.54
25	2.088 53.04	1.852 47.04	.610 15.49	.730 18.54
37	2.729 69.32	2.500 63.50	.610 15.49	.730 18.54

184-XXX-X93LXX1

SERIES \_\_\_\_\_  
 POSITIONS \_\_\_\_\_  
 009  
 015  
 025  
 037  
 050  
 GENDER \_\_\_\_\_  
 1 = MALE  
 2 = FEMALE  
 TERMINATION \_\_\_\_\_  
 9 = IDC  
 SHELL PLATING \_\_\_\_\_  
 3 = NICKEL  
 HARDWARE OPTIONS \_\_\_\_\_  
 00 = NO HARDWARE  
 01 = .065 4-40 CLINCH NUT BOARD SIDE  
 02 = .250 4-40 CLINCH NUT BOARD SIDE  
 03 = .250 4-40 CLINCH NUT MATING SIDE  
 PLATING OPTIONS \_\_\_\_\_  
 1 = GOLD FLASH

**SPECIFICATIONS:**


**MATERIALS:**

SHELL: STEEL, NICKEL PLATED  
 INSULATOR: UL 94V-0 RATED PBT  
 230 DEGREE PROCESS TEMP.  
 CONTACTS: PHOSPHOR BRONZE - GOLD PLATED  
 RoHS COMPLIANT

**ELECTRICALS:**

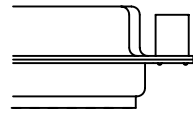
CURRENT RATING: 1 AMP  
 CONTACT RESISTANCE: 15 mOHMS MAX  
 INSULTOR RESISTANCE: 1000 MOHMS MIN  
 VOLTAGE: 500V AC FOR 1 MINUTE  
 TEMPERATURE: -50°C TO +100°C

ACCEPTS: 26 & 28 AWG STRANDED .050" CENTER FLAT RIBBON CABLE

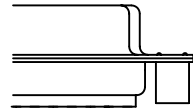
	THESE DRAWINGS AND SPECIFICATIONS ARE THE PROPERTY OF NorComp AND SHALL NOT BE REPRODUCED, COPIED OR USED AS THE BASIS FOR THE MANUFACTURE OF SALE OF APPARATUS WITHOUT WRITTEN PERMISSION.		DRAWN: <b>WAYNE ROBBINS</b>	DATE: 11-15-05
			CHECKED:	DATE:
<h1>NorComp</h1>		SCALE: 1:1	SHEET 1 OF 1	REV 1
		DWG NO. <b>184-XXX-293LXX1</b>		

**DESCRIPTION:** CLINCH NUT HARDWARE

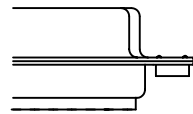
ALL CLINCH-NUTS ARE 4-40 INTERNAL THREADS



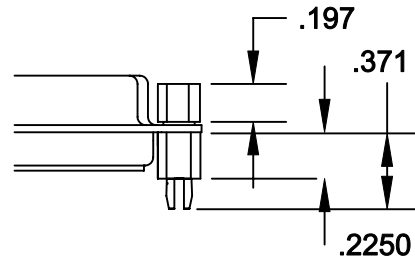
03X..... .250" (MATING SIDE) - CN8



02X ..... .250" (BOARD SIDE) - CN2



01X ..... .065" (BOARD SIDE) - CN1



91X ..... .225" (BOARD SIDE) - .197 MATING SIDE - CN10/SFS0440

NOTE: 4-40 FEMALE SCREW LOCK IS REMOVABLE



THESE DRAWINGS AND SPECIFICATIONS ARE THE PROPERTY OF NorComp AND SHALL NOT BE REPRODUCED, COPIED OR USED AS THE BASIS FOR THE MANUFACTURE OF SALE OF APPARATUS WITHOUT WRITTEN PERMISSION.

DRAWN:  
WAYNE ROBBINS

DATE:  
11-15-05

CHECKED:

DATE:

**NorComp**

SCALE:

SHEET 1 OF 1

REV 1

DWG NO.

CLINCH-NUT OPTIONS