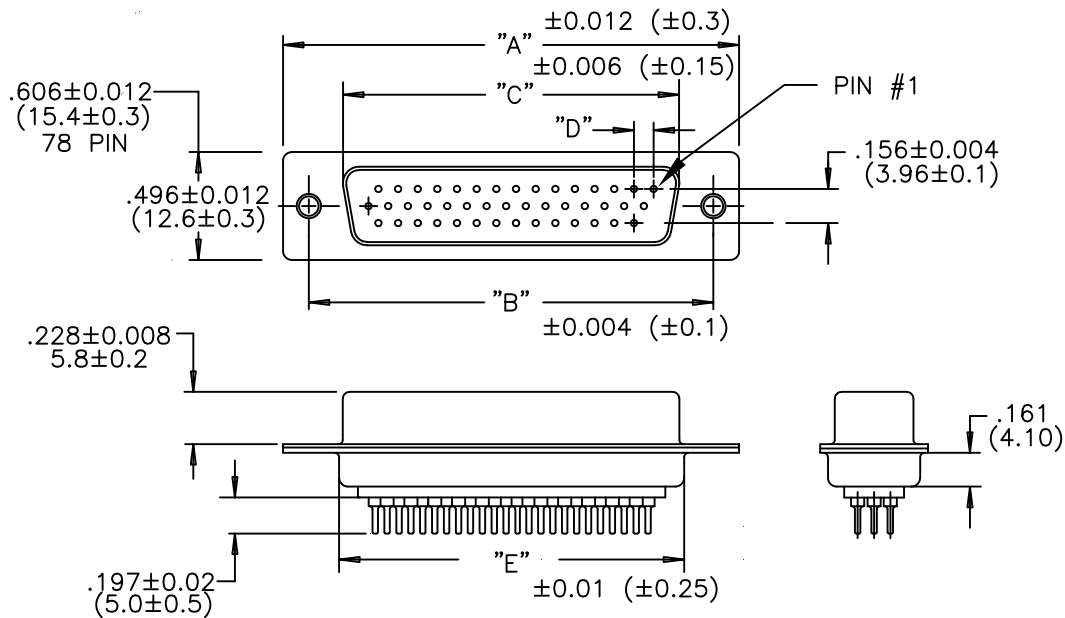


NUMBER OF CONTACTS	"A" Inch (mm)	"B" Inch (mm)	"C" Inch (mm)	"D" Inch (mm)	"E" Inch (mm)
15	1.213 (30.80)	.984 (24.99)	.643 (16.34)	.090 (2.29)	.756 (19.20)
26	1.543 (39.20)	1.312 (33.32)	.972 (24.70)	.090 (2.29)	1.091 (27.70)
44	2.087 (53.00)	1.852 (47.04)	1.512 (38.40)	.090 (2.29)	1.618 (41.10)
62	2.732 (69.40)	2.500 (63.50)	2.157 (54.80)	.095 (2.41)	2.256 (57.30)
78	2.638 (67.00)	2.406 (61.10)	2.055 (52.20)	.095 (2.41)	2.169 (55.10)



NOTE:

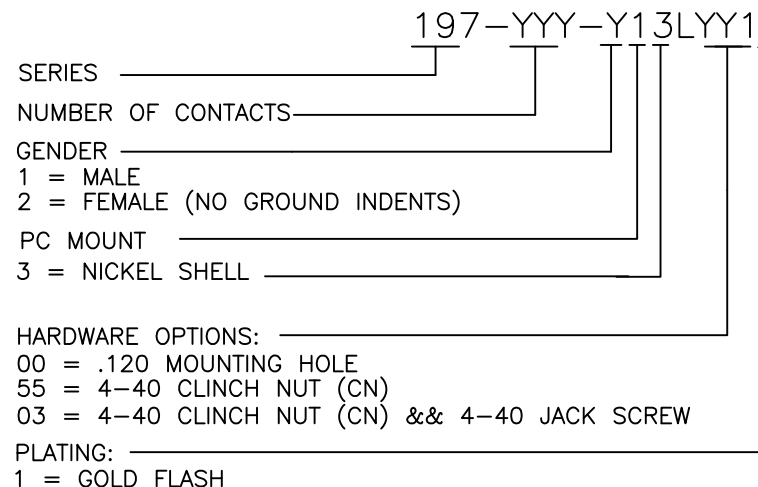
MATERIAL HOUSING: PBT UL94V-0, BLACK
 230°C PROCESS TEMP
 COPPER ALLOY
 STEEL

CONTACT: SHELL: FULL GOLD FLASH
 NICKEL

FINISH CONTACT: SHELL: FULL GOLD FLASH
 NICKEL

ELECTRICAL RATED CURRENT: 5A
 DWV: 500VAC RMS FOR 1 MIN
 INSULATOR RESISTANCE: 1000 MOhms MIN.
 CONTACT RESISTANCE: 15 mOhms MAX.

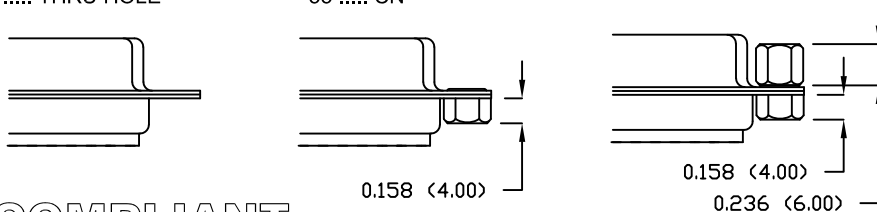
ENVIRONMENT OPERATION TEMPERATURE: -50°C TO +100°C



00 THRU HOLE

55 CN

03 CN // JACK SCREW



RoHS COMPLIANT

UNITS = inch (mm)

DO NOT SCALE FROM DRAWING



THESE DRAWINGS AND SPECIFICATIONS ARE THE PROPERTY OF NorComp AND SHALL NOT BE REPRODUCED, COPIED OR USED AS THE BASIS FOR THE MANUFACTURE OR SALE OF APPARATUS WITHOUT WRITTEN PERMISSION.

DRAWN:

P. JENKINS

DATE:

09/15/2005

NorComp

SCALE: NTS

SHEET 1 OF 1

REV 4

DWG NO.

197-YYY-213LYY1