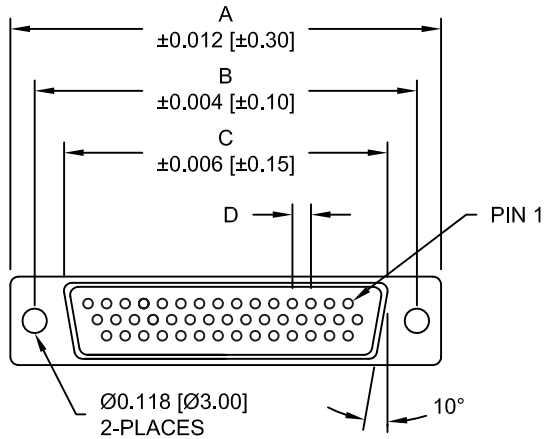


DESCRIPTION: HIGH DENSITY FEMALE - VERTICAL DIP - LOW PROFILE - STAMPED

DIMENSIONS

SIZE	A	B	C	D
15	30.80	24.99	16.34	2.29
	1.213	0.984	0.643	0.090
26	39.20	33.32	24.70	2.29
	1.543	1.312	0.972	0.090
44	53.00	47.04	38.40	2.29
	2.087	1.852	1.512	0.090
62	69.40	63.50	55.80	2.41
	2.732	2.500	2.197	0.095
78	67.00	61.10	52.20	2.41
	2.638	2.406	2.055	0.095

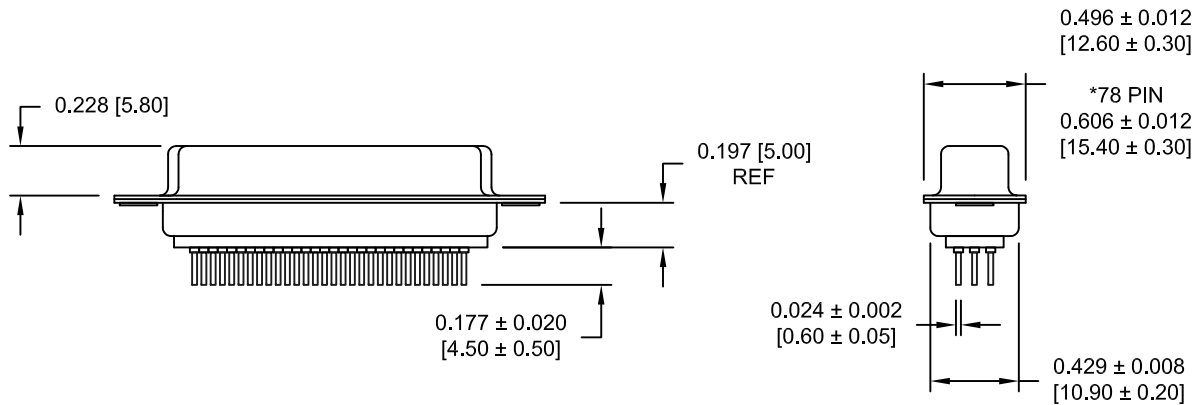


MATERIAL:

SHELL: STEEL, NICKEL PLATED  
 INSULATOR: PBT, UL 94V-O RATED, 230°C PROCESS TEMP  
 CONTACT: BRASS, GOLD FLASH ENTIRE CONTACT

ELECTRICAL:

CURRENT RATING: 2 AMPS  
 WITHSTANDING VOLTAGE: 1,000VAC AT  
 CONTACT RESISTANCE: 10 mOhms Max.  
 INSULATION RESISTANCE: 5,000 MOhms min.  
 VOLTAGE: 500VAC FOR 1 MINUTE  
 TEMPERATURE: -55° C TO +125° C



195-YYY-2 1 3 L YY 1

SERIES  
 POSITIONS  
 015  
 026  
 044  
 062  
 078  
 GENDER  
 2 = FEMALE  
 TERMINATION  
 1 = PC MOUNT  
 SHELL PLATING  
 3 = NICKEL  
 RoHS COMPLIANT  
 LOW PROCESS TEMP. - 230°C  
 HARDWARE OPTIONS  
 00 = NO HARDWARE  
 03 = 4-40 HEX STANDOFFS  
 55 = 4-40 INSERTS  
 PLATING OPTIONS  
 1 = GOLD FLASH

RoHS COMPLIANT

UNITS = INCHES [MM] DO NOT SCALE FROM DRAWING



THESE DRAWINGS AND SPECIFICATIONS ARE THE PROPERTY OF NorComp AND SHALL NOT BE REPRODUCED, COPIED OR USED AS THE BASIS FOR THE MANUFACTURE OR SALE OF APPARATUS WITHOUT WRITTEN PERMISSION.

DRAWN:  
 PAM JENKINS

DATE:  
 09/12/05

NorComp

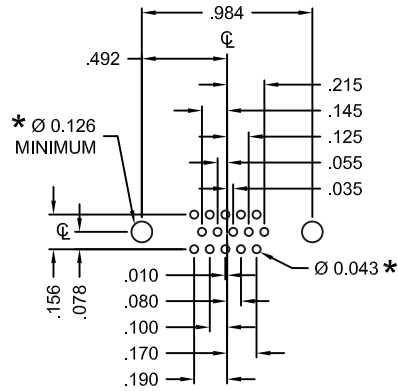
SCALE:  
 NTS

SHEET OF  
 1 3

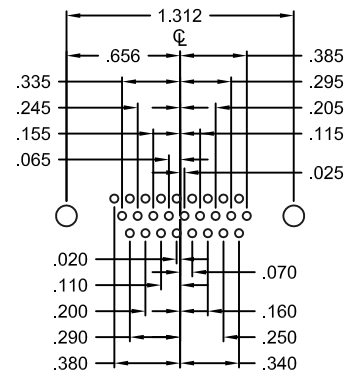
REV  
 7

DWG NO. 195-YYY-213LYY1

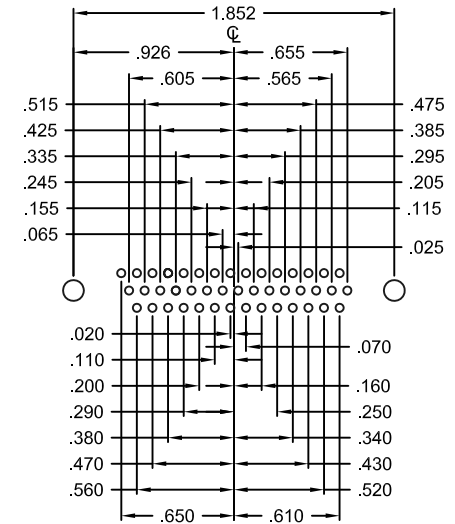
DESCRIPTION: PCB LAYOUT - H.D. VERTICAL - FEMALE



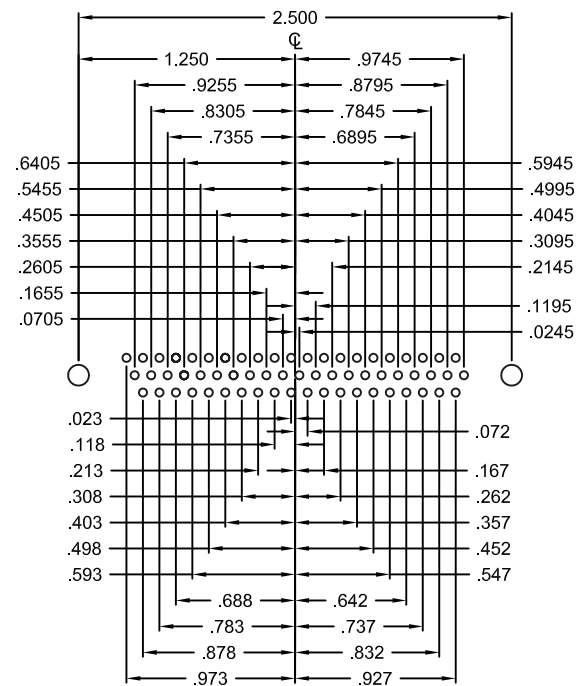
15 POSITION



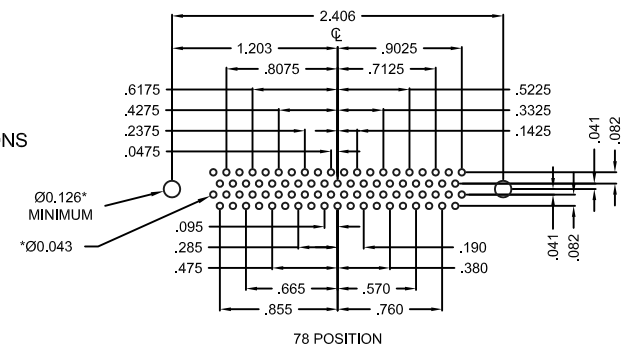
26 POSITION



44 POSITION



62 POSITION



78 POSITION

HOLE PATTERN SHOWN ARE FOR FEMALE

UNITS = inch

\* TYP. SUGGESTED SIZE MAY NOT BE SUITABLE FOR ALL APPLICATIONS

RoHS COMPLIANT

UNITS = INCHES [MM] DO NOT SCALE FROM DRAWING

**NT** THESE DRAWINGS AND SPECIFICATIONS ARE THE PROPERTY OF NorComp AND SHALL NOT BE REPRODUCED, COPIED OR USED AS THE BASIS FOR THE MANUFACTURE OR SALE OF APPARATUS WITHOUT WRITTEN PERMISSION.

DRAWN: PAM JENKINS  
DATE: 09/12/05

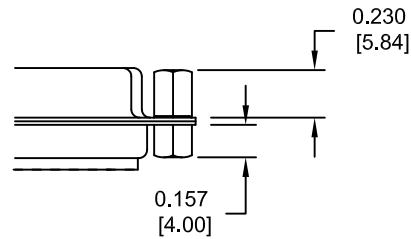
**NorComp**

SCALE: NTS	SHEET 2	OF 3	REV 7
DWG NO.		195-YYY-213LYY1	

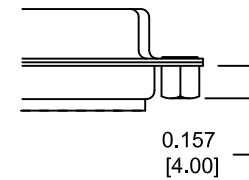
DESCRIPTION: HARDWARE

TOLERANCE:  
ALL DIMENSIONS ARE ± 0.010 [0.25]

03X ..... 0.158" (BOARD SIDE) - 0.230" MATING SIDE



55X ..... 0.158" (BOARD SIDE)



RoHS COMPLIANT

UNITS = INCHES [MM] DO NOT SCALE FROM DRAWING



THESE DRAWINGS AND SPECIFICATIONS ARE THE PROPERTY OF NorComp AND SHALL NOT BE REPRODUCED, COPIED OR USED AS THE BASIS FOR THE MANUFACTURE OR SALE OF APPARATUS WITHOUT WRITTEN PERMISSION.

DRAWN:  
PAM JENKINS

DATE:  
09/12/05

NorComp

SCALE:  
NTS

SHEET OF  
3 3

REV  
7

DWG NO.

195-YYY-213LYY1