

AN-2261 LP38869EVAL - 1A FlexCap LDO

1 Introduction

The LP38869EVAL evaluation board is designed to demonstrate the capabilities of the LP38869MH high performance LDO voltage regulator. It is intended to provide a flexible circuit configuration and access to points of interest. The circuit schematic is shown in [Figure 8](#).

Component placement is shown in [Figure 2](#) and [Figure 3](#). The PCB layout is shown in [Figure 5](#) through [Figure 7](#). Test points are provided on the evaluation board for signal monitoring.

2 Operating Range

- Minimum Operating Input Voltage: 2.70V (For 2.50V Pre-Set V_{OUT})
- Maximum Operating Input Voltage: 5.50V
- Output Voltage : 2.50V (Pre-Set Mode) or 3.30V (Adjustable Mode), selectable via SW1-1
- Maximum Operating Output Current: 1A
- Ambient Temperature Operating Range: 0°C to 50°C
- Board Size: 1.90 inches x 2.00 inches

3 Evaluation Board Start-Up

Before applying power to the LP38869EVAL board, all external connections should be verified. The external power supply must be turned off before being connected. Confirm proper polarity to the 'VIN' (TP1) and 'GND' (TP2) terminals before turning the external power supply on. An appropriate load should be connected between the 'VOUT1' (TP3) and 'GND'(TP5) terminals. Under basic evaluation conditions the test points TP4 (VOUT2), TP6 (/RST), TP7 (SS), and TP8 (SET) can be left open. The two switches (SW1-1, and SW1-2) should be in the OFF positions (i.e., switch levers are towards the TI logo). The evaluation board will be in the normal operating mode when input power is applied.

4 $\overline{\text{SHDN}}$

Normal operation is when SW1-2 is in the OFF position (i.e. the switch lever is towards the TI logo at the bottom edge of the board). Moving SW1-2 to the ON position will connect the $\overline{\text{SHDN}}$ pin to ground which will disable the output. There is no Test Point for the $\overline{\text{SHDN}}$ pin. See [Figure 4](#).

5 Soft-Start

Unlike traditional Soft-Start circuits that slow the rise time of the output voltage, the LP38869 Soft-Start circuit slowly increases the available output current. The rise time is controlled by the value of the SS capacitor (C3). The maximum output current can also be limited by placing a resistor in parallel with the SS capacitor, from TP7 to Ground. See the LP38869 datasheet for more details

6 Output Voltage Selection

Normal operation is when SW1-1 is in the OFF position (i.e. the switch lever is towards the TI logo at the bottom edge of the board). With SW1-1 in the OFF position the output voltage will be determined by the internal settings (i.e., 2.50V). Moving SW1-1 to the ON position will connect the LP38869 OUT pin to the SET pin through resistors R3 and R4 which will disable the internally set output voltage (2.50V), and will use the external resistors (R2, R3, and R4) to set the output voltage to the adjustable value of 3.30V. See Figure 4.

6.1 Changing the Output Voltage

The LP38869EVAL board is assembled with R3= 0.0Ω, R4= 31.6 kΩ and R2= 10.0 kΩ, to set the typical output voltage to 3.30V when SW1-1 is in the ON position.

Resistors R2, R3, and R4 may be replaced, as needed, to achieve the desired output voltage as long as the value for R3 and R4 is low enough so that the SET pin bias current flowing through R3 and R4 does not cause any offset in the output voltage.

The following formula is used to determine the typical output voltage:

$$V_{OUT} = (V_{SET} \times (1 + (R4 / R2))) + (I_{SET} \times R4) \quad (1)$$

Keeping the value for R4 less than about 100 kΩ will minimize the effects of I_{SET} and the formula can be simplified to the traditional:

$$V_{OUT} = (V_{SET} \times (1 + (R4 / R2))) \quad (2)$$

For the resistors installed on the LP38869EVAL board:

$$V_{OUT} = (0.8V \times (1 + (31.6 \text{ k}\Omega / 10.0 \text{ k}\Omega))) = 3.328V \text{ (typical)} \quad (3)$$

Alternately, the following formula can be used to determine the appropriate R4 value for a given R2 value with a $V_{OUT} \geq 0.800V$:

$$R4 = ((V_{OUT} / V_{SET}) - 1) \times R2 \quad (4)$$

The following table suggests some $\pm 1\%$ tolerance values for R4, keeping R2 and R3 held at the installed values of 10.0 kΩ and 0Ω respectively, for a range of output voltages using the typical V_{SET} value of 800 mV. This is not a definitive list, as other combinations R2 and R4 do exist that will provide similar, possibly better, performance.

Target V_{OUT}	R4	R2	Typical V_{OUT}
1.00V	2.49 kΩ	10.0 kΩ	0.999V
1.80V	12.4 kΩ	10.0 kΩ	1.792V
2.50V	21.5 kΩ	10.0 kΩ	2.52V
	Open	10.0 kΩ	2.50V
3.30V	31.6 kΩ	10.0 kΩ	3.32V
5.00V	52.3 kΩ	10.0 kΩ	4.98V

In the Adjustable Mode the resistors used for R4 and R2 should be high quality, tight tolerance, and with matching temperature coefficients. It is important to remember that, although the value of V_{REF} is ensured, the final value of V_{OUT} in the Adjustable Mode is not. The use of low quality resistors for R4 and R2 can easily produce an Adjustable Mode V_{OUT} value that is unacceptable.

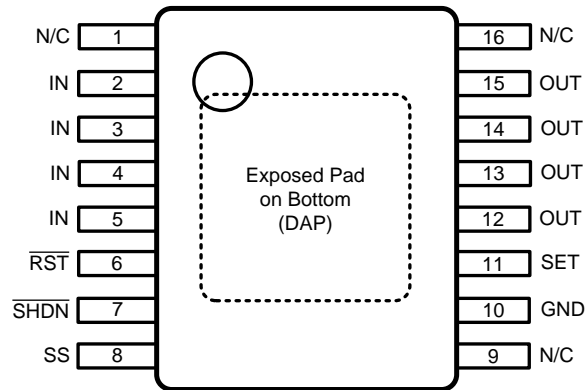


Figure 1. LP38869MH (16 Pin TSSOP-EP) Connection Diagram

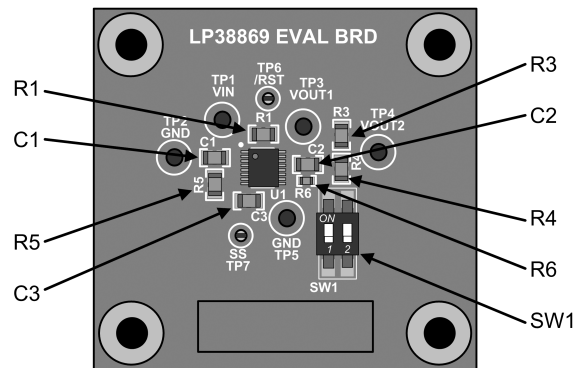


Figure 2. Top Side Parts Placement, as Viewed from the Top

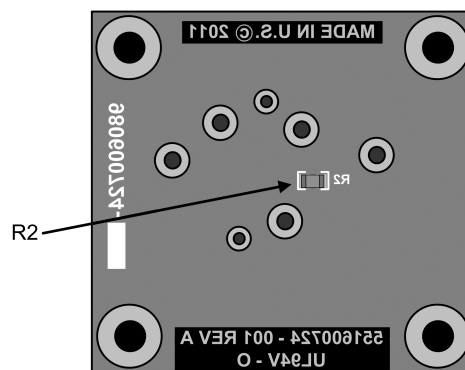


Figure 3. Bottom Side Part Placement, as Viewed from the Top

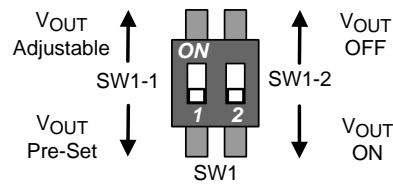


Figure 4. SW1-1 and SW1-2 Functions

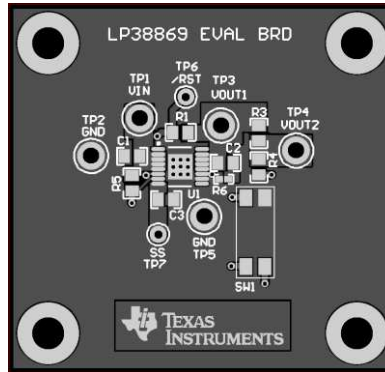


Figure 5. Top Layer as Viewed from Top

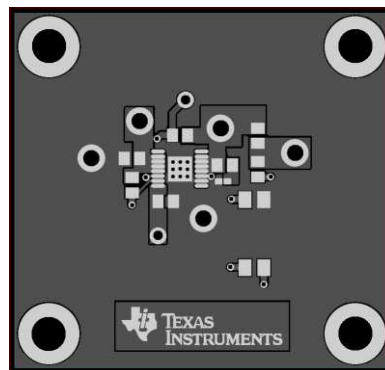


Figure 6. Copper Layer 1 (Top Layer) as Viewed from Top

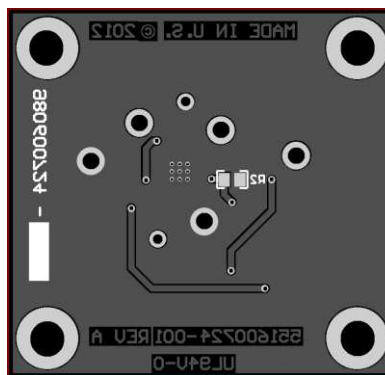


Figure 7. Copper Layer 2 (Bottom Layer) as Viewed from Top

IMPORTANT NOTICE

Texas Instruments Incorporated and its subsidiaries (TI) reserve the right to make corrections, enhancements, improvements and other changes to its semiconductor products and services per JESD46, latest issue, and to discontinue any product or service per JESD48, latest issue. Buyers should obtain the latest relevant information before placing orders and should verify that such information is current and complete. All semiconductor products (also referred to herein as "components") are sold subject to TI's terms and conditions of sale supplied at the time of order acknowledgment.

TI warrants performance of its components to the specifications applicable at the time of sale, in accordance with the warranty in TI's terms and conditions of sale of semiconductor products. Testing and other quality control techniques are used to the extent TI deems necessary to support this warranty. Except where mandated by applicable law, testing of all parameters of each component is not necessarily performed.

TI assumes no liability for applications assistance or the design of Buyers' products. Buyers are responsible for their products and applications using TI components. To minimize the risks associated with Buyers' products and applications, Buyers should provide adequate design and operating safeguards.

TI does not warrant or represent that any license, either express or implied, is granted under any patent right, copyright, mask work right, or other intellectual property right relating to any combination, machine, or process in which TI components or services are used. Information published by TI regarding third-party products or services does not constitute a license to use such products or services or a warranty or endorsement thereof. Use of such information may require a license from a third party under the patents or other intellectual property of the third party, or a license from TI under the patents or other intellectual property of TI.

Reproduction of significant portions of TI information in TI data books or data sheets is permissible only if reproduction is without alteration and is accompanied by all associated warranties, conditions, limitations, and notices. TI is not responsible or liable for such altered documentation. Information of third parties may be subject to additional restrictions.

Resale of TI components or services with statements different from or beyond the parameters stated by TI for that component or service voids all express and any implied warranties for the associated TI component or service and is an unfair and deceptive business practice. TI is not responsible or liable for any such statements.

Buyer acknowledges and agrees that it is solely responsible for compliance with all legal, regulatory and safety-related requirements concerning its products, and any use of TI components in its applications, notwithstanding any applications-related information or support that may be provided by TI. Buyer represents and agrees that it has all the necessary expertise to create and implement safeguards which anticipate dangerous consequences of failures, monitor failures and their consequences, lessen the likelihood of failures that might cause harm and take appropriate remedial actions. Buyer will fully indemnify TI and its representatives against any damages arising out of the use of any TI components in safety-critical applications.

In some cases, TI components may be promoted specifically to facilitate safety-related applications. With such components, TI's goal is to help enable customers to design and create their own end-product solutions that meet applicable functional safety standards and requirements. Nonetheless, such components are subject to these terms.

No TI components are authorized for use in FDA Class III (or similar life-critical medical equipment) unless authorized officers of the parties have executed a special agreement specifically governing such use.

Only those TI components which TI has specifically designated as military grade or "enhanced plastic" are designed and intended for use in military/aerospace applications or environments. Buyer acknowledges and agrees that any military or aerospace use of TI components which have **not** been so designated is solely at the Buyer's risk, and that Buyer is solely responsible for compliance with all legal and regulatory requirements in connection with such use.

TI has specifically designated certain components as meeting ISO/TS16949 requirements, mainly for automotive use. In any case of use of non-designated products, TI will not be responsible for any failure to meet ISO/TS16949.

Products

Audio	www.ti.com/audio
Amplifiers	amplifier.ti.com
Data Converters	dataconverter.ti.com
DLP® Products	www.dlp.com
DSP	dsp.ti.com
Clocks and Timers	www.ti.com/clocks
Interface	interface.ti.com
Logic	logic.ti.com
Power Mgmt	power.ti.com
Microcontrollers	microcontroller.ti.com
RFID	www.ti-rfid.com
OMAP Applications Processors	www.ti.com/omap
Wireless Connectivity	www.ti.com/wirelessconnectivity

Applications

Automotive and Transportation	www.ti.com/automotive
Communications and Telecom	www.ti.com/communications
Computers and Peripherals	www.ti.com/computers
Consumer Electronics	www.ti.com/consumer-apps
Energy and Lighting	www.ti.com/energy
Industrial	www.ti.com/industrial
Medical	www.ti.com/medical
Security	www.ti.com/security
Space, Avionics and Defense	www.ti.com/space-avionics-defense
Video and Imaging	www.ti.com/video

TI E2E Community

e2e.ti.com