

2.4 GHz MegaSphere – Outdoor/Indoor

Model Number:
IGO2450

Omnidirectional In-Building Antenna

Specifications:

- Weather resistant and waterproof with fully sealed radome.
- Installed vertically with cable exiting "top" or "bottom"

Element Type	Linear Array
Frequency Range	2.4 – 2.5 GHz
Peak Gain	5 dBi
Polarization	Vertical
Impedance	50 ohms
Maximum Input Power	50 watts
VSWR (Min. Performance)	< 2.0:1
Dimensions	28.5 x 3.2 cm
Housing	PVC
Wind Resistance	120 mph
Operating/Storage Temperature	-40° to +70°C



Mounting:

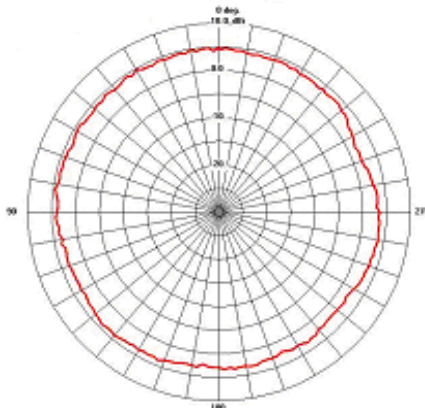
- Outdoor kit: adjustable pole clamp & spacer
- Indoor kit: beam-clip, ceiling grid clip & optional-use ceiling stand-off

Cables & Connectors:

Model #	Reference #	Plenum Rated Coax	Connector
IGO2450-RT12	CAF94568	12" RG-142	RP-TNC
IGO2450-NF12	CAF94579	12" RG-142	N-Female

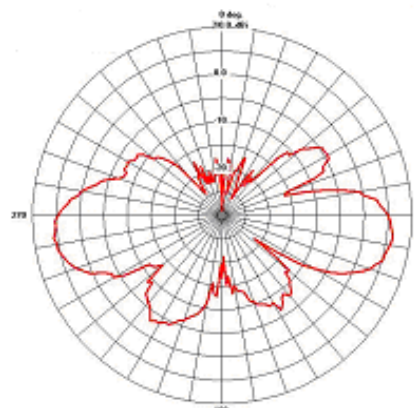


Pattern data files for LANPlanner are available at
www.centurion.com or www.wirelessvalley.com.



Azimuth Plane

Cut perpendicular to the antenna and perpendicular to the cable



Elevation Plane

Cut perpendicular to the antenna along the cable axis



Indoor Mounting Kit



Outdoor Mounting Kit

Specifications subject to change without notice.

IGO2450a – 4/30/04