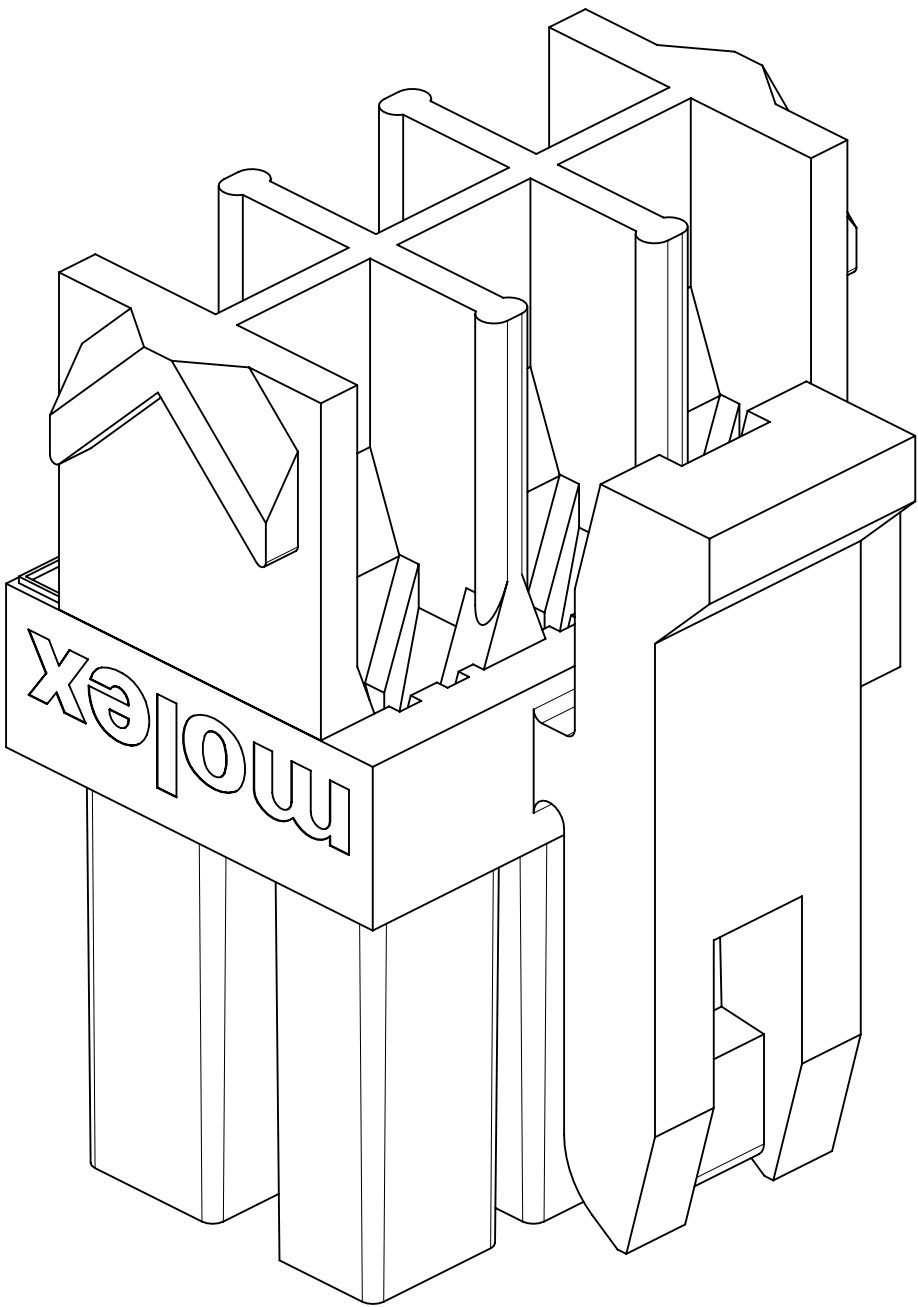


- NOTES:
- 1) MATERIAL: UNFILLED NYLON, RATED UL94V-2, IEC60335-1 GLOW WIRE CAPABLE, COLOR: BLACK
  - 2) FINISH: NONE
  - 3) PRODUCT SPECIFICATION: PS-43045
  - 4) PACKAGING SPECIFICATION: BULK PER 1729520001-PK
  - 5) MATES WITH: MOLEX 43020 PLUGS, 203632 TPA PLUGS AND 43045 HEADERS
  - 6) FOR USE WITH: 43030 AND 46235 (LOW FORCE) MOLEX FEMALE TERMINALS
  - 7) HOUSING IS DESIGNED FOR USE WITH 172953-XX02 TPA. NEVER USE WITHOUT TPA.
  - 8) THIS PART CONFORMS TO CLASS B REQUIREMENTS OF COSMETIC SPEC PS-45499-002
  - 9) PARTS MAY HAVE A BLEMISH NEAR THE GATE THAT DOES NOT AFFECT FUNCTIONALITY
  - 10) TERMINALS IN THE LOWER ROW ARE INSERTED 180° FROM THE UPPER ROW
  - 11) SEE SECTION A-A FOR PROPER ORIENTATION
  - 11) LAST CIRCUIT NUMBER OF THE CONNECTOR. NOT APPLICABLE TO 4 CIRCUIT.
  - 12) REF 430250000-AS FOR OVERMOLDING PARAMETERS
  - 13) TO BE MEASURED APPROXIMATELY 1.52/.060 FROM [E] SURFACE
  - 14) TO BE MEASURED ON [C] SURFACE
  - 15) MOLEX RECOMMENDS THE USE OF MICRO-FIT TEST PLUG SERIES 44242 FOR ALL TESTING. TEST PLUGS MUST NOT BE MATED OR UNMATED UNDER LOAD. DO NOT USE STANDARD MATING COMPONENTS FOR TEST PURPOSES.
  - 16) TEXT ON PART IS FOR REFERENCE ONLY. TEXT AND TEXT LOCATION MAY VARY DEPENDING ON PART NUMBER AND/OR TOOL.



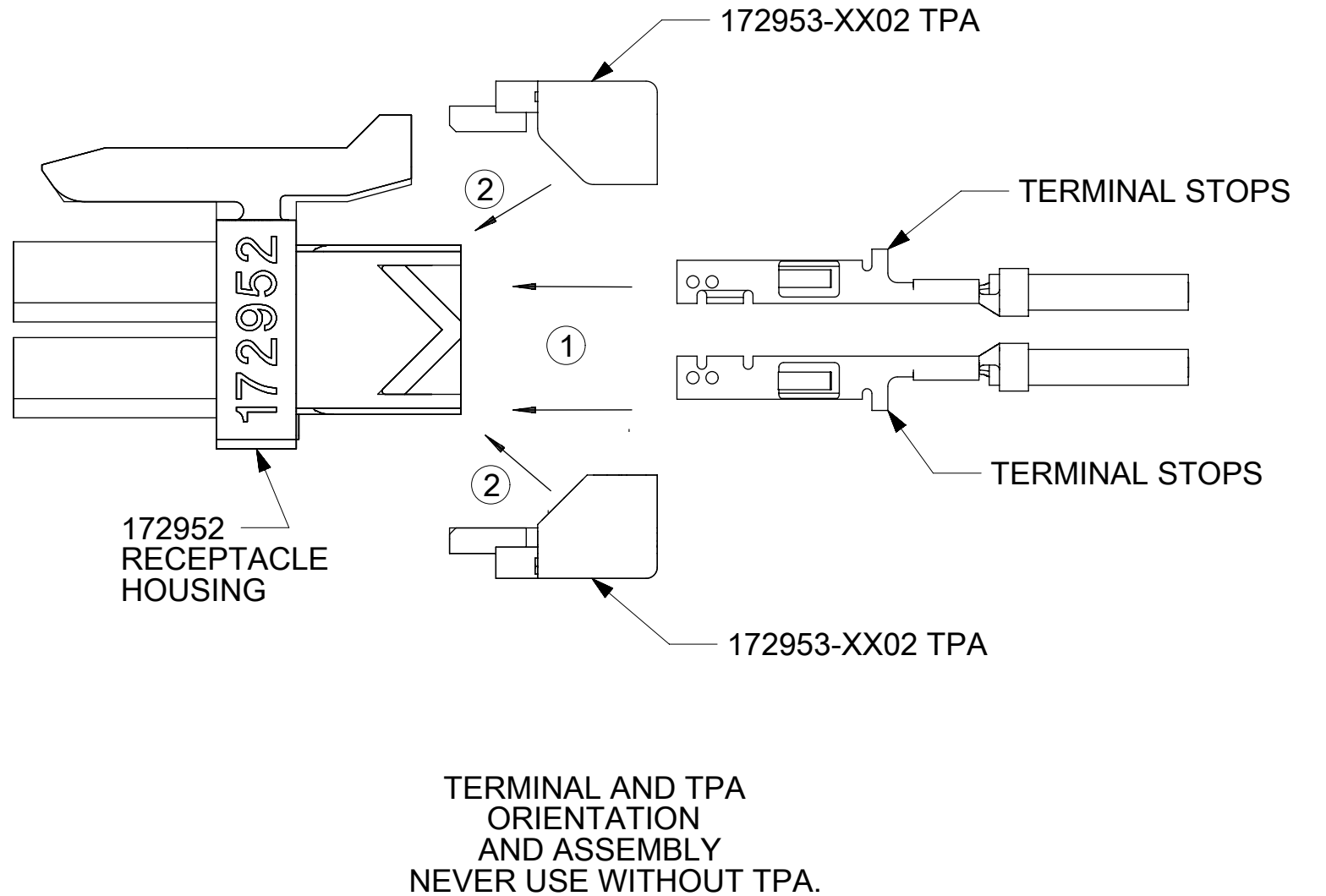
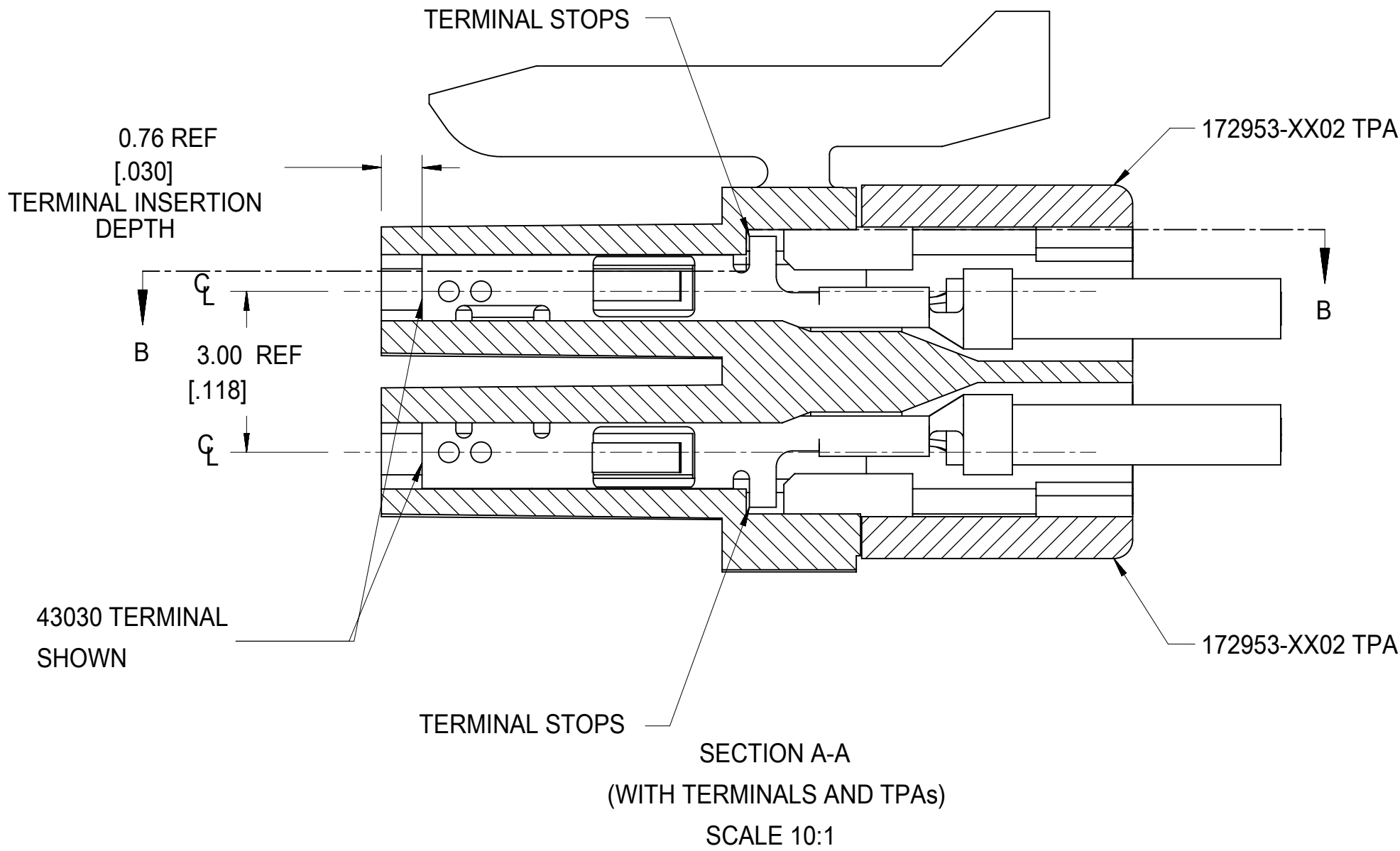
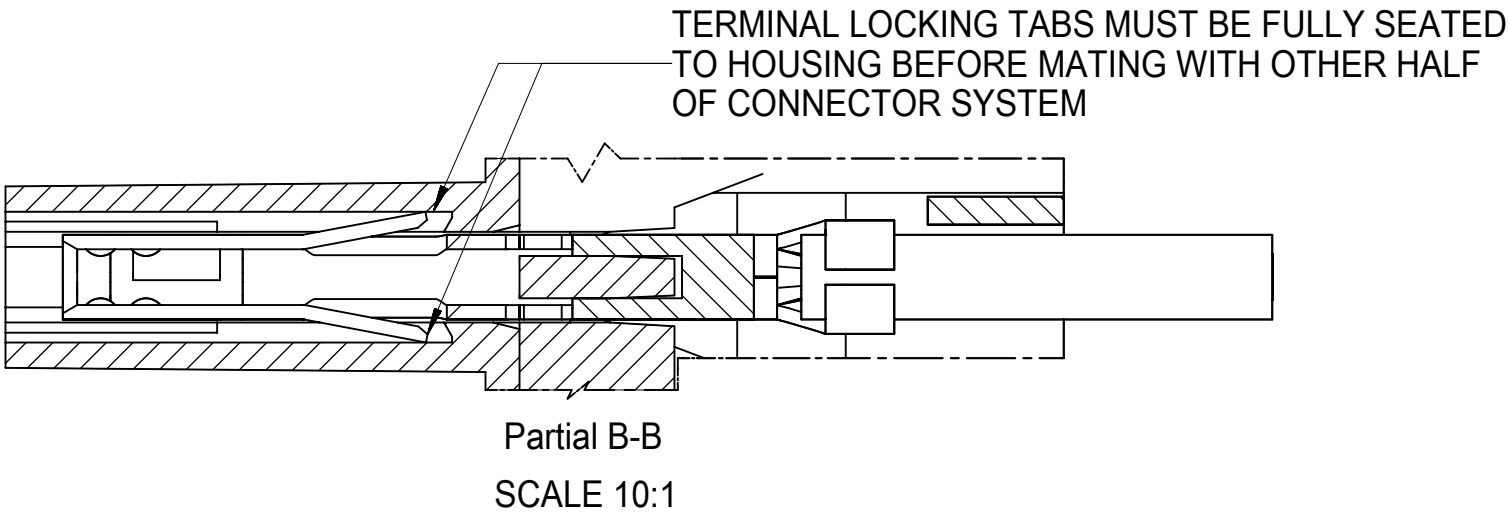
172952-0602 SHOWN

NEVER USE WITHOUT TPA.

SCALE 10:1

FUNCTIONAL SYMBOLS	THIS DRAWING CONTAINS INFORMATION THAT IS PROPRIETARY TO MOLEX ELECTRONIC TECHNOLOGIES, LLC AND SHOULD NOT BE USED WITHOUT WRITTEN PERMISSION													
	DIMENSION UNITS		SCALE		CURRENT REV DESC: CORRECT DIM B TOLERANCE					<div>molex</div> <div>MICROFIT TPA RECEPTACLE GLOW WIRE DUAL-ROW HOUSING</div>				
	MM/INCH		5:1											
	GENERAL TOLERANCES (UNLESS SPECIFIED)													
			MM	INCH	EC NO: 680777 DRWN: HENRYA1 2021/10/08 CHK'D: MKIPPER APPR: FSMITH 2021/10/19					PRODUCT CUSTOMER DRAWING				
	4 PLACES	±		±										
	3 PLACES	±		± 0.01										
	2 PLACES	±	0.25	± 0.015	INITIAL REVISION: DRWN: MCOLE 2016/02/23 APPR: BPISZCZOR 2016/03/24					DOCUMENT NUMBER		DOC TYPE	DOC PART	REVISION
	1 PLACE	±	0.38	±						SD-172952-002		PSD	001	C
	0 PLACES	±		±										
DIVISIONAL SYMBOLS	ANGULAR TOL ± 0.5 °				THIRD ANGLE PROJECTION		DRAWING	SERIES	MATERIAL NUMBER	CUSTOMER		SHEET NUMBER		
	DRAFT WHERE APPLICABLE MUST REMAIN WITHIN DIMENSIONS						C-SIZE	172952	SEE CHART	GENERAL MARKET		1 OF 3		

DOCUMENT STATUS	P1	RELEASE DATE	2021/10/19 16:57:58
-----------------	----	--------------	---------------------



24	172952-2402	33.00 / 1.299	36.85 / 1.451
22	172952-2202	30.00 / 1.181	33.85 / 1.333
20	172952-2002	27.00 / 1.063	30.85 / 1.215
18	172952-1802	24.00 / .945	27.85 / 1.096
16	172952-1602	21.00 / .827	24.85 / .978
14	172952-1402	18.00 / .709	21.85 / .860
12	172952-1202	15.00 / .591	18.85 / .742
10	172952-1002	12.00 / .472	15.85 / .624
8	172952-0802	9.00 / .354	12.85 / .506
6	172952-0602	6.00 / .236	9.85 / .388
4	172952-0402	3.00 / .118	6.85 / .270
CKT SIZE	PART NUMBER	DIM A	DIM B

DOCUMENT STATUS	P1	RELEASE DATE	2021/10/19	16:57:58
-----------------	----	--------------	------------	----------

SYMBOLS	THIS DRAWING CONTAINS INFORMATION THAT IS PROPRIETARY TO MOLEX ELECTRONIC TECHNOLOGIES, LLC AND SHOULD NOT BE USED WITHOUT WRITTEN PERMISSION									
	= 0	DIMENSION UNITS	SCALE		CURRENT REV DESC: CORRECT DIM B TOLERANCE	<div>molex</div>				
			MM/IN	5:1						
	= 0	GENERAL TOLERANCES (UNLESS SPECIFIED)			EC NO: 680777	MICROFIT TPA RECEPTACLE GLOW WIRE DUAL-ROW HOUSING				
	= 0									
	= 0	4 PLACES	±	±	DRWN: HENRYA1	2021/10/08	PRODUCT CUSTOMER DRAWING			
		3 PLACES	±	± 0.01	CHK'D: MKIPPER	2021/10/13				
	= 0	2 PLACES	± 0.25	± 0.015	APPR: FSMITH	2021/10/19	DOCUMENT NUMBER SD-172952-002			
	= 0	1 PLACE	± 0.38	±	INITIAL REVISION: DRWN: MCOLE 2016/02/23 APPR: BPISZCZOR 2016/03/24					
	= 0	0 PLACES	±	±			PSD	001	C	
	= 0	ANGULAR TOL ± 0.5 °								
	= 0	DRAFT WHERE APPLICABLE MUST REMAIN WITHIN DIMENSIONS			THIRD ANGLE PROJECTION	DRAWING	SERIES	MATERIAL NUMBER	CUSTOMER	SHEET NUMBER
	= 0					C-SIZE	172952	SEE CHART	GENERAL MARKET	2 OF 3

