

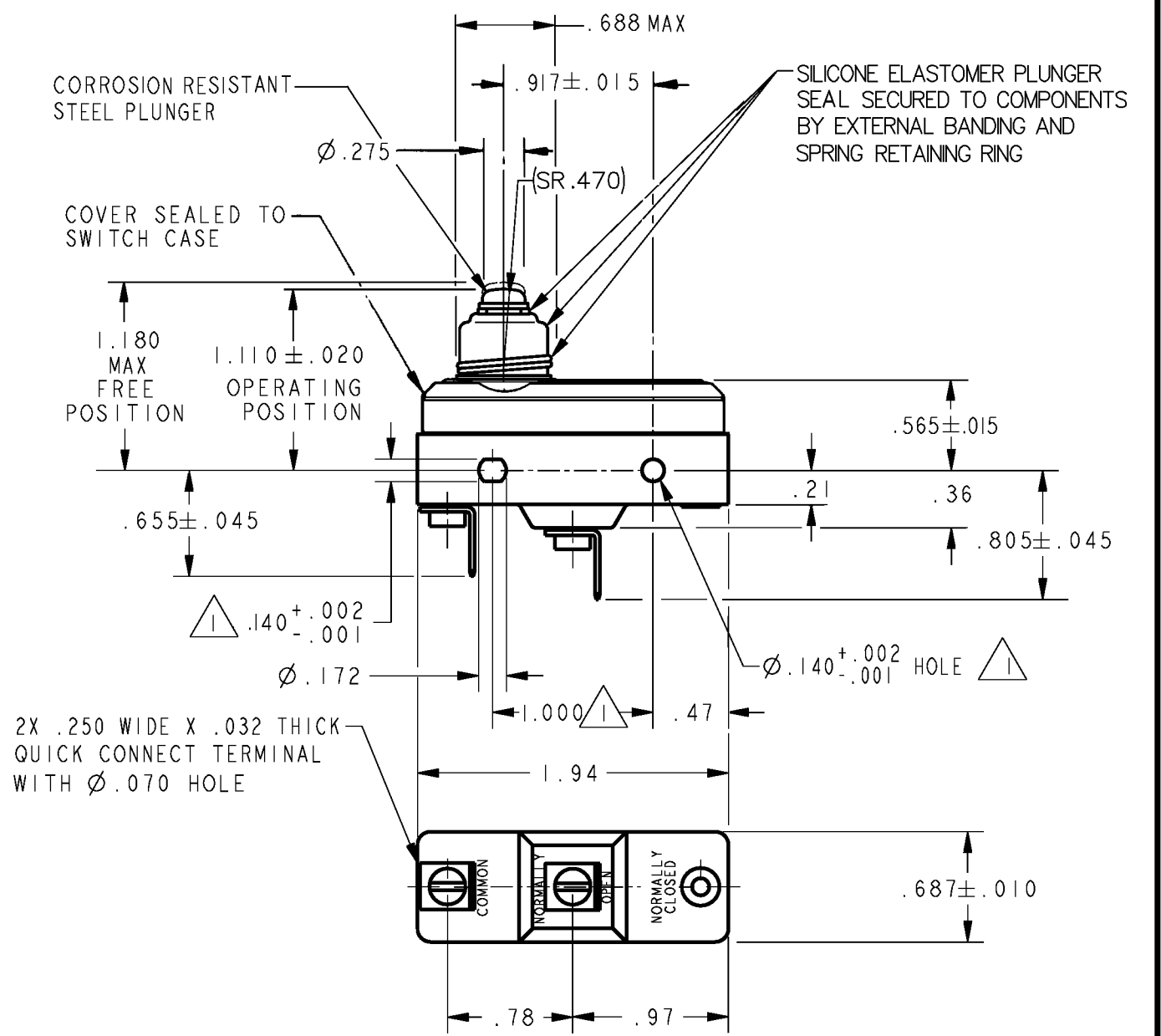
CATALOG LISTING
YZ-2RDS555116-D6-S
PAGE 1 OF 1
REPLACES
RELEASE NO. 201475


M
ISSUE
3

CHECK
REVISIONS
A 0001352
JAH
03AUG03
B 0017586
TSG
09JAN06

RJ
CHECK
10 OCT 00


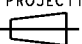
SAV
CHECK
10 OCT 00
RASTER
DRAWN
CSL
10 OCT 00







NOTES
 MOUNTING HOLES WILL ACCEPT PINS OR SCREWS OF Ø.139 MAX ON 1.000 ± .002 CENTERS
 2 - SEALED CONSTRUCTION PROVIDES SPLASH RESISTANCE

ANSI Y14.5M-1982 APPLIES

THIS DRAWING COVERS A PROPRIETARY ITEM AND IS THE PROPERTY OF MICRO SWITCH, A DIVISION OF HONEYWELL. THIS DRAWING IS NOT TO BE COPIED OR USED WITHOUT THE APPROVAL OF MICRO SWITCH.

THIRD ANGLE PROJECTION
 

| CHARACTERISTICS | ELECTRICAL DATA | SCALE FULL | DO NOT SCALE PRINT |
|---------------------------------------|--|--|--------------------|
| OPERATING FORCE ----- 8-19 OZ | CONTACT ARRANGEMENT S P N O | UNLESS OTHERWISE SPECIFIED TOLERANCES ARE ONE PLACE (.0) ±.030 TWO PLACE (.00) ±.015 THREE PLACE (.000) ±.005 | |
| RELEASE FORCE ----- 4 OZ MIN | L96 15A 125, 250 OR 480 VAC 1/8HP 125 VAC, 1/4HP 250 VAC 1/2A 125 VDC, 1/4A 250 VDC | | |
| DIFFERENTIAL TRAVEL ----- .0004-.0025 | L288 L306 L315 16A 250V     | | ANGLES ± |
| OVERTRAVEL ----- .062 MIN | T85 5E4 | WEIGHT .076 LB | |