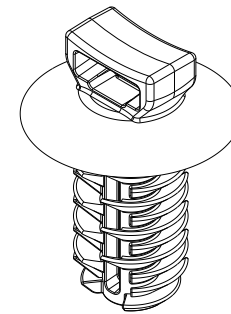
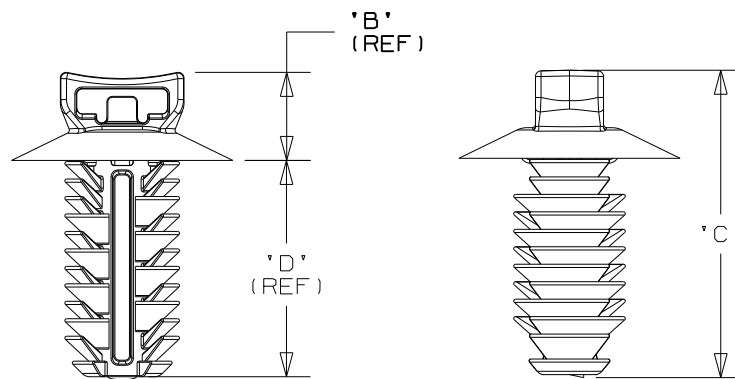
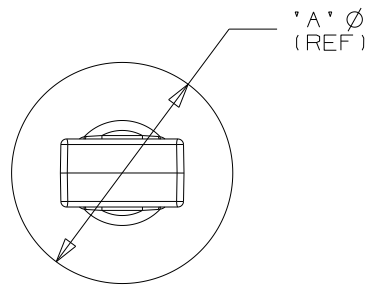


THIS COPY IS PROVIDED ON A RESTRICTED BASIS AND IS NOT TO BE USED IN ANY WAY DETRIMENTAL TO THE INTERESTS OF PANDUIT CORPORATION.

PANDUIT PART NUMBER	USED WITH CABLE TIES	DIMENSIONS				WEIGHT grams/100pcs
		'A' (REF)	'B' (REF)	'C'	'D' (REF)	
PUM-925- <u> </u>	M, I, S, LH, H	19.6	6.6	26.7	19.1	116.4



SCALE 1.5:1

NOTES:

- SEE WWW.PANDUIT.COM FOR PART NUMBER SUFFIX DESIGNATION FOR PACKAGE SIZE, MATERIAL AND COLOR.
- (*) DIMENSIONAL VARIANCE IS POSSIBLE DUE TO MOLDING PROCESS RELATED SINK MARKS.
- APPLICATION SPECIFICATION:
HOLE DIAMETER: 8.8 - 9.3 mm
PANEL THICKNESS: 1.0 - 16.0 mm

CAD FILENAME/LAYERS		10B015CY/00 DC_GB0239MQ_10									
PANDUIT CORP.		TINLEY PARK, ILLINOIS									
PUM-925 PUSH UMBRELLA MOUNT 925											
UNLESS OTHERWISE SPECIFIED, ALL DIMENSIONS ARE METRIC TOLERANCE: ±0.5MM											
DRAWN BY	TMSA	MAT'L:	NYLON 6/6								
DATE	12-29-06	SCALE		1.5:1 UNLESS NOTED							
CHK'D		DRAWING NO.		GB0239MQ							
REV	DATE	BY	CHK	DESCRIPTION	ECN	-	R	CUST	SUP	DWG	SIZE
10	3/11/11	BWG	JADE	CHANGED MATERIAL NOTE. REMOVED MATERIAL BOX FROM CHART.	GB0239MQ		10	PBC			A

REV	DATE	BY	CHK	DESCRIPTION	ECN	-	R	CUST	SUP
10	3/11/11	BWG	JADE	CHANGED MATERIAL NOTE. REMOVED MATERIAL BOX FROM CHART.	GB0239MQ		10	PBC	