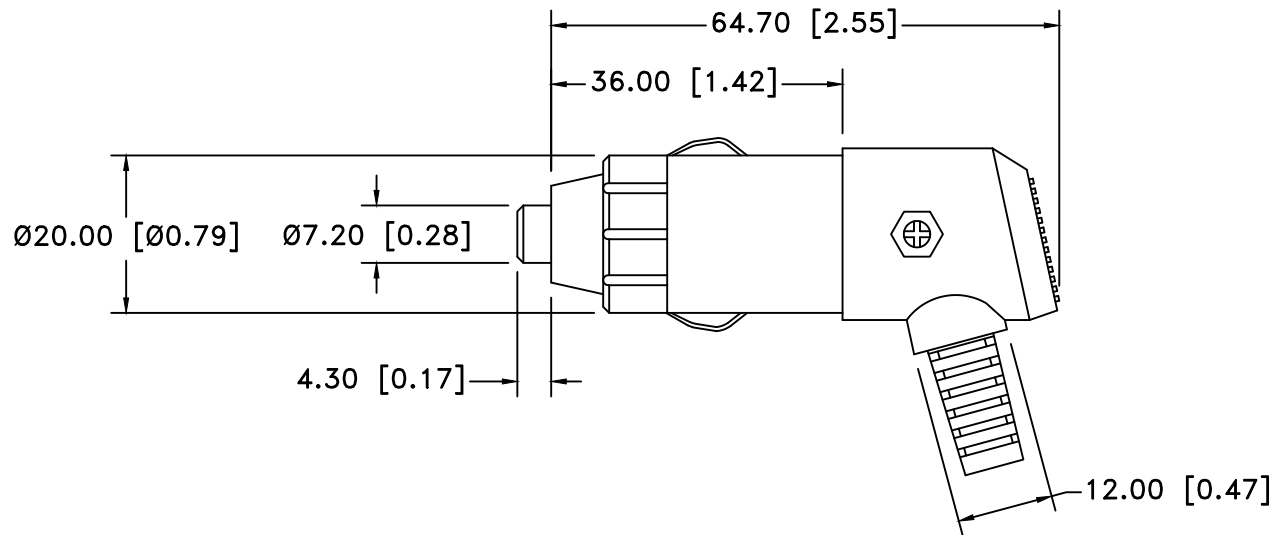



| Date | SYM | REVISION RECORD | AUTH | DR. | CK. |
|----------|-----|---|------|------|-----|
| 09/21/12 | A | UPDATED FUSE SPEC. | T.B. | B.S. | |
| 11/07/14 | B | UPDATED TO ROHS 2 COMPLIANT | T.B. | B.S. | |
| 02/28/20 | C | DIM. 64.70 WAS 68.84 DIM. 7.20 WAS 7.30 ADDED DIM. 12.00 AND 36.00 UPDATED NOTES | T.B. | B.S. | |
| | | | | | |



NOTE:

CASING: ABS 757
 CAP: ABS 757
 TERMINALS: STEEL, NICKEL PLATED
 TIP: STEEL, NICKEL PLATED
 FUSE: 3 AMP., 250V, GLASS TUBE, 6mm X 30mm
 ROHS COMPLIANT

| | | | |
|--------------------------------|---|--------------------------|---------------|
| Tolerance (Except as noted) |  Memory Protection Devices, Inc 200 Broad Hollow Road, Farmingdale, New York 11735 | | |
| decimal ±.5 (.020) | | Scale | Drawn By B.S. |
| Fractional ± .8 (.030) | Title | Approved By T.B. | |
| Angular ± 3° | Date | Drawing Number | |
| | 02/28/20 | AP131 | |
| | | AUTO PLUG FOR 21mm JACKS | |