

# MICRO SWITCH

FREEMONT ILLINOIS, U.S.A.  
A DIVISION OF HONEYWELL  
FED. MFG. CODE 91929

# SWITCH-BASIC

CATALOG LISTING

YA-1R2416-A42

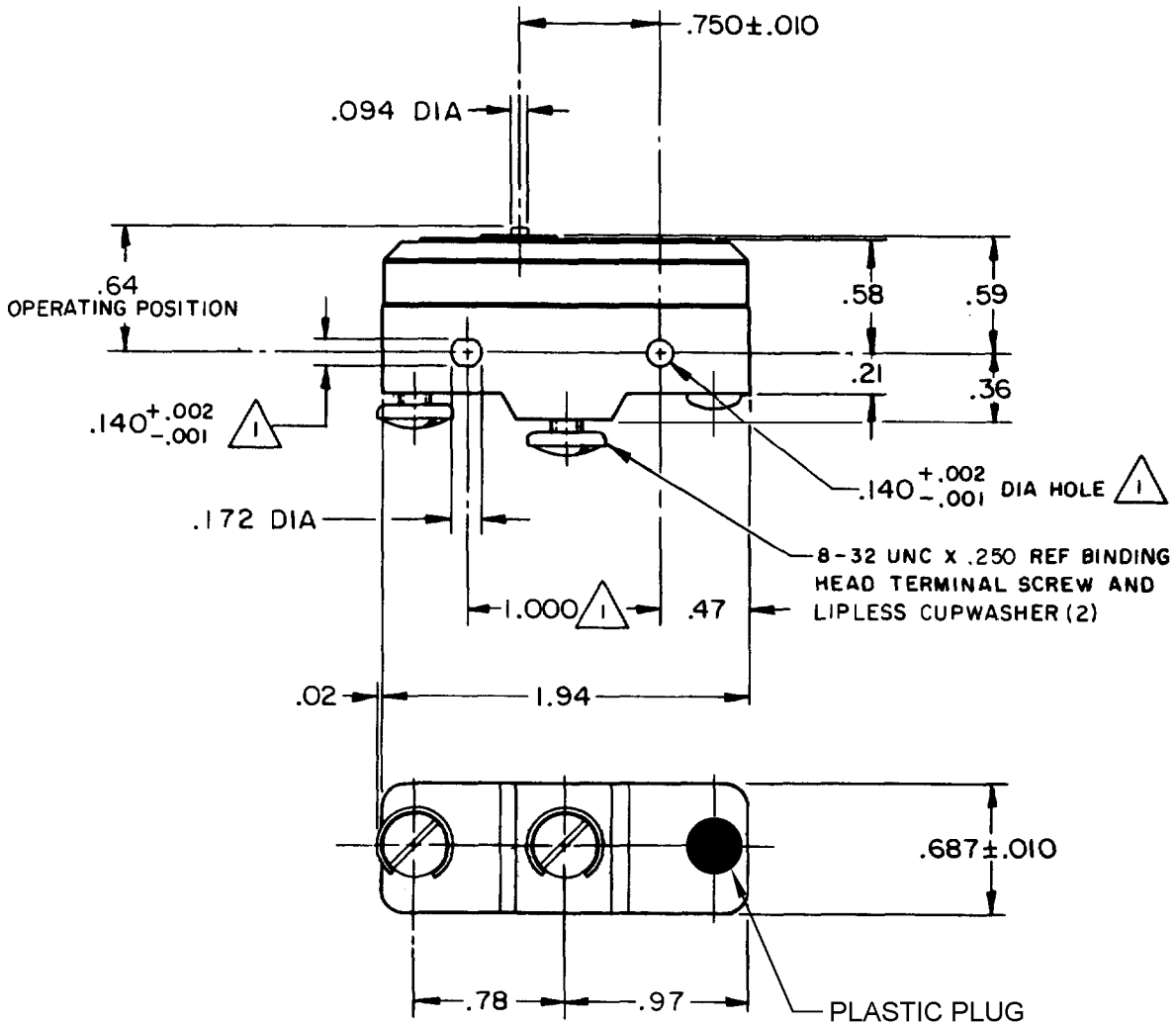
ADF2800

CATALOG LISTING  
YA-1R2416-A42  
PAGE 1 OF 1  
ISSUE 7  
M  
PSR 12SEP07  
RELEASE NO. PR-11226  
REPLACES X71572-YA

REVISIONS

A	CO51554	T SK	21 JULY 82
B	CO-77589	MAM	29 MAR 94
C	CO93346	DLT	28 AUG 98
D	0000566	CSL	17 JUN 03
E	0017742	TSG	09 JAN 06
F	0033746	JA	12 SEP 07

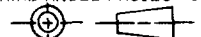
09 JAN 06  
RJ  
CHECK  
25 MAY 82  
C.E.B.  
K A G 19 MAY 82  
FO-52848-A  
DRAWN



NOTES  
 1 MOUNTING HOLES WILL ACCEPT PINS OR SCREWS OF .139 MAX DIA ON 1.000 ± .002 CENTERS  
 2 SWITCH TO WITHSTAND TEMPERATURE OF 250° F

THIS DRAWING COVERS A PROPRIETARY ITEM AND IS THE PROPERTY OF MICRO SWITCH, A DIVISION OF HONEYWELL. THIS DRAWING IS NOT TO BE COPIED OR USED WITHOUT THE APPROVAL OF MICRO SWITCH.

THIRD ANGLE PROJECTION



### CHARACTERISTICS

OPERATING FORCE ----- 13-19 OZ  
 DIFFERENTIAL FORCE ----- 1 1/2-6 OZ  
 RELEASE FORCE ----- 10 OZ MIN  
 DIFFERENTIAL TRAVEL ----- .004-.006  
 OVERTRAVEL ----- .010 MIN

### ELECTRICAL DATA

CONTACT ARRANGEMENT  
S P N O

L33 20A-125, 250 OR 480 VAC  
 1HP-125 VAC; 2HP-250 VAC  
 0.3A-125 VDC; 0.15A-250 VDC

L288  
L308  
L310  
L315

CE 05

20(3)A 250V ~ T85 5E4

SCALE FULL

DO NOT SCALE PRINT

TOLERANCES  
 APPLY TO DESIGN UNITS. CONVERSIONS ARE ONLY FOR REFERENCE. UNLESS NOTED, TOLERANCES ARE ±

	DM.	TOL.	DM.	TOL.
	mm	mm/in	in	mm/in
NO PLACES	X	1/64	X	0.01/03
ONE PLACE	X,X	0.4/018	X,X	0.38/015
TWO PLACES	X,X,X	0.16/008	X,X,X	0.13/005
THREE PLACES	X,X,X,X		X,X,X,X	
ANGLES				

DESIGN UNITS  SI METRIC  US CUSTOMARY

WEIGHT .063 LB