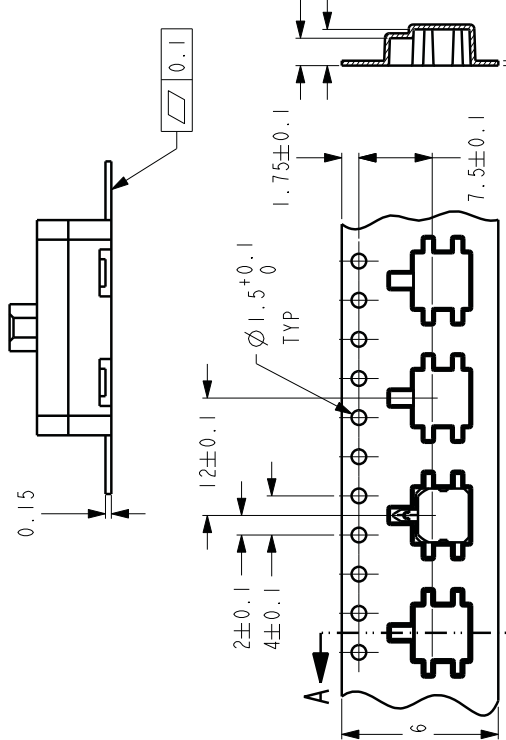
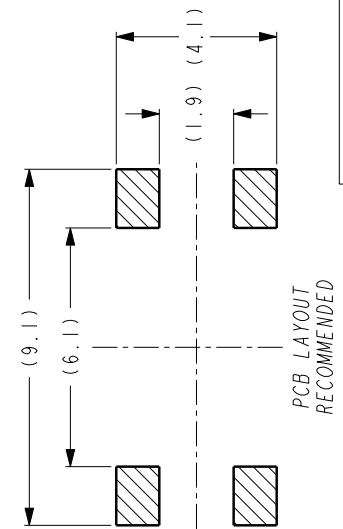
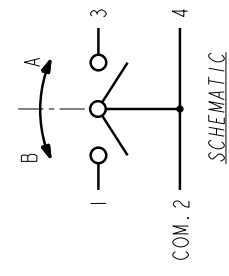
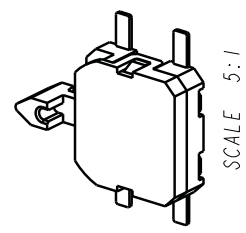
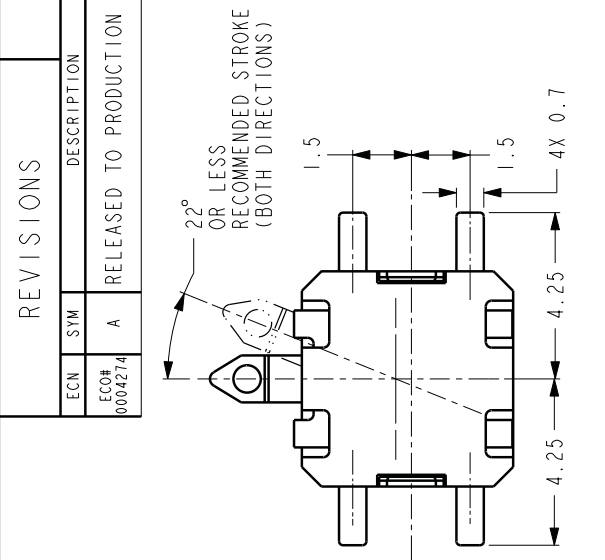
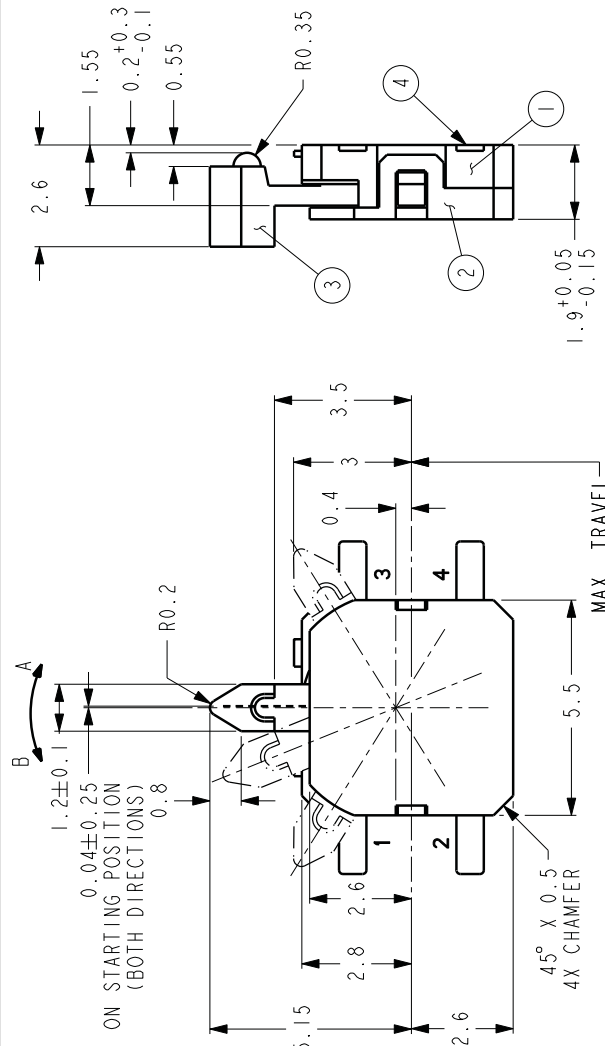


REVISIONS		SDP001	A
ECN	SYM	DESCRIPTION	DATE
0004274	A	RELEASED TO PRODUCTION	3/26/09 CAB

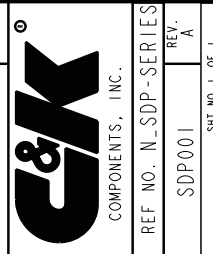


No	DESCRIPTION	MATERIAL	FINISH	COLOR
1	BASE	PA		BLACK
2	COVER	PA		GRAY
3	ACTUATOR	PA		BLACK
4	TERMINALS	COPPER ALLOY	MBNi - Ag	
	SPRING	SS		
	MOVEABLE	SS		

CAD FILE NO.: SDP001-OL_A

ALL DIMS. AND TOLS. PER ANSI Y14.5	UNLESS OTHERWISE SPECIFIED DIMENSIONS ARE IN MM
THIS DOCUMENT AND THE INFORMATION IN IT IS THE EXCLUSIVE PROPERTY OF C&K COMPONENTS, INC. AND IS NOT TO BE USED OR DISCLOSED WITHOUT THE EXPRESS PERMISSION OF C&K COMPONENTS, INC.	
<input checked="" type="checkbox"/> CRITICAL - MUST COMPLY WITH C&K QUALIFICATION STD. CK600019	SCALE 8:1
<input type="checkbox"/> MAJOR DIMENSION	DATE 09-Mar-09
	DRAWN CAB
	APPROVED

OUTLINE DRAWING		SDP001
SDP-SERIES		SDP001
REF. NO. N.SDP-SERIES	REV. A	REV. A
COMPONENTS, INC.		SHT. NO. 1 OF 1



SDP001 REV. A