

# MICRO SWITCH

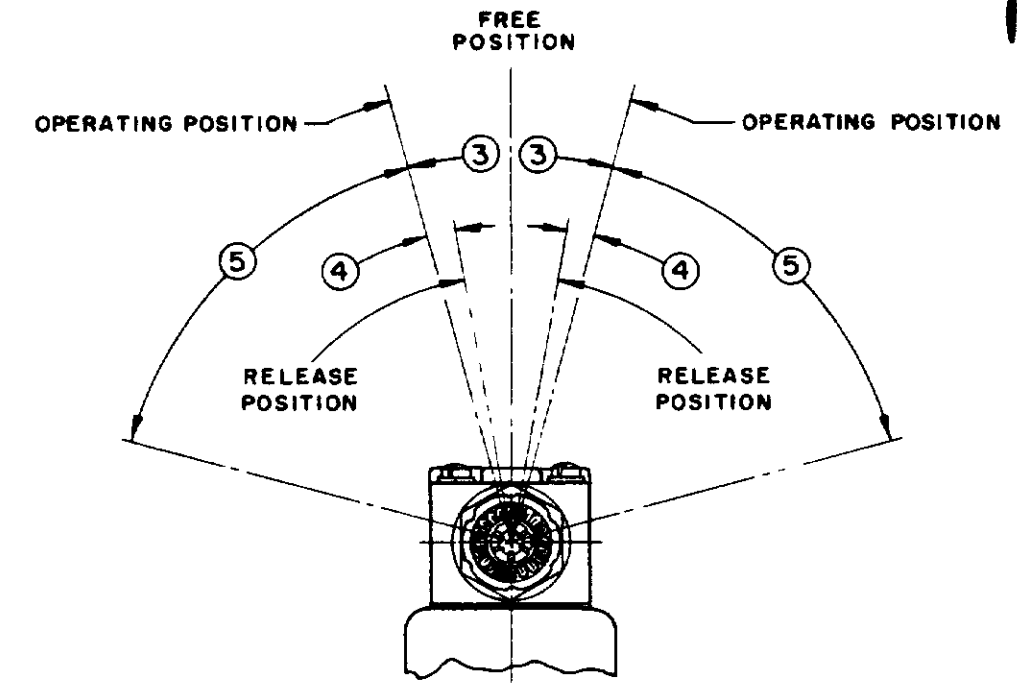
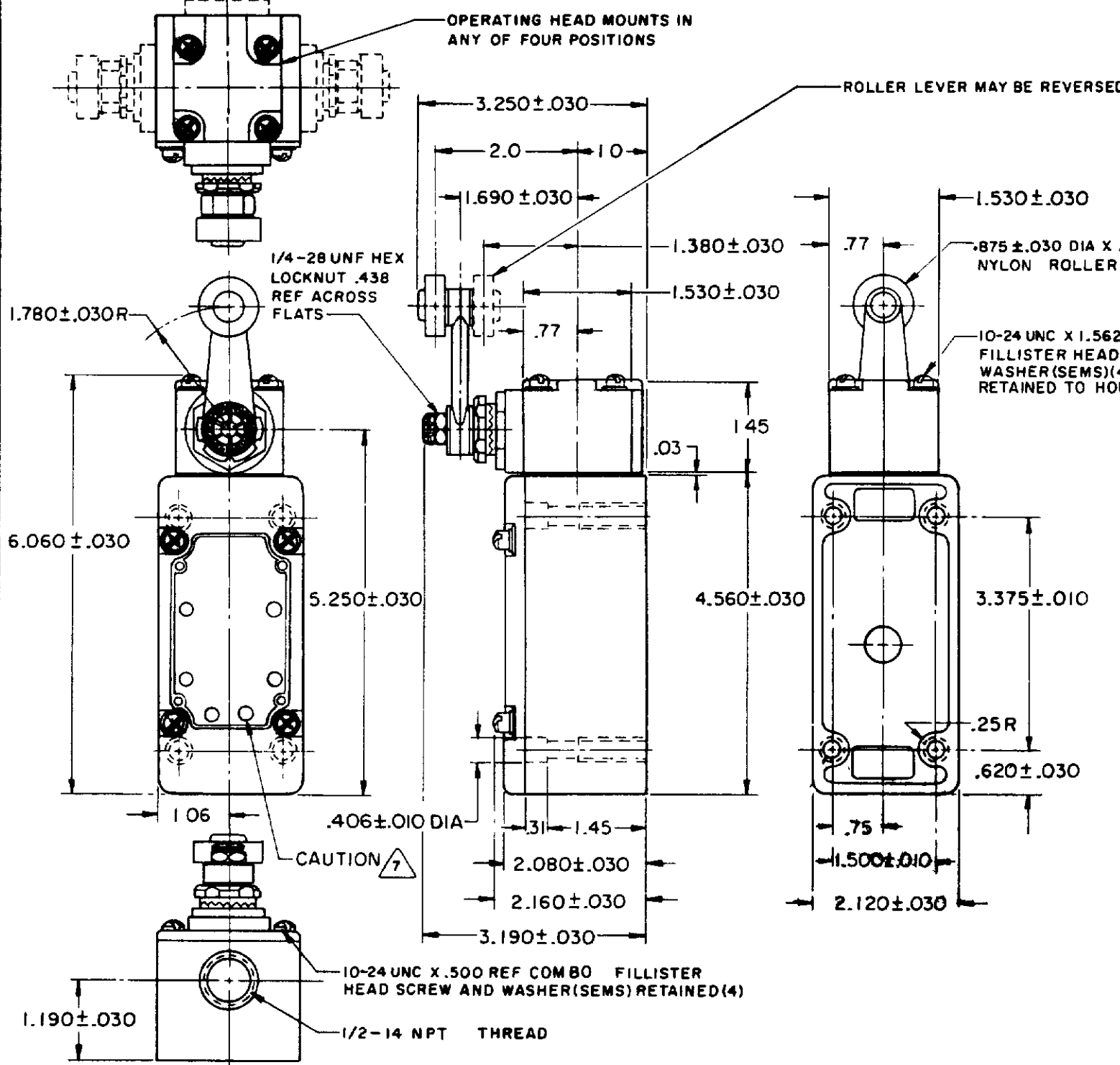
A DIVISION OF MINNEAPOLIS-HONEYWELL REGULATOR COMPANY  
 FEDERAL MFR CODE 91929

## SWITCH - ENCLOSED

CATALOG LISTING  
**151 ML 3 - E1**

M

M 151ML3-E1  
 DRAWING NUMBER  
 ISSUE 10  
 REVISIONS  
 A CO 18841 M B F 3 DEC 64  
 B CO 20576 M B F 1 DEC 65  
 C CO 24575 M B S 10 SEP 68  
 D PR 3294 B. J. 25 APR 63  
 E CO 32194 D TSK 26 SEPT 83  
 F CO 58367 J A S 12 NOV 85  
 G 55051 C T A 6 JAN 86  
 H CO 63739 D J S 15 JUN 88  
 J CO 74287 G J W 22 APR 93  
 O M W 25 APR 63  
 FO-80378-003



- NOTES
- 1 - LISTED BY UNDERWRITERS LABORATORY, INC. FOR USE IN CLASS 1, GROUPS C AND D VAPOR - AIR ATMOSPHERE, AND CLASS 2 GROUPS E, F AND G DUST - AIR ATMOSPHERES
  - 2 3 SWITCH IS ASSEMBLED FOR ACTUATION IN EITHER DIRECTION TO CONVERT SWITCH FOR ACTUATION EITHER CLOCKWISE OR COUNTER-CLOCKWISE DIRECTION ONLY REMOVE THE HEAD AND SLIDE THE CAM TOWARD THE REAR OF THE HEAD SUFFICIENTLY TO DISENGAGE FROM THE FLATS ON THE SHAFT. ROTATE THE CAM 90° IN THE OPPOSITE DIRECTION OF THE ACTUATION DESIRED AND RE-ENGAGE THE CAM WITH THE FLATS ON THE SHAFT
  - 4 - LEVER MAY BE POSITIVELY LOCKED AT INTERVALS OF APPROX 0.4° (870 POSITIONS)
  - 5 - LEVER MAY BE ADJUSTED TO ACTUATE THE SWITCH IN THE CLOCKWISE DIRECTION ONLY, THE COUNTER-CLOCKWISE DIRECTION ONLY, OR IN BOTH DIRECTIONS
  - 6 - IT IS ESSENTIAL THAT THE CONDUIT OPENING BE PROPERLY SEALED IN ORDER TO MAINTAIN THE EXPLOSION PROOF PROPERTIES
  - 7 - SWITCH WILL PERFORM SATISFACTORILY IN TEMPERATURES TO MINUS 20°F

THIS DRAWING COVERS A PROPRIETARY ITEM AND IS THE PROPERTY OF MICRO SWITCH A DIVISION OF MINNEAPOLIS-HONEYWELL REGULATOR CO. THIS DRAWING IS NOT TO BE COPIED OR USED WITHOUT THE APPROVAL OF MICRO SWITCH

CHARACTERISTICS	ELECTRICAL DATA	SCALE 1/2 TO 1
OPERATING FORCE ----- 3 LB MAX	CONTACT ARRANGEMENT TWO CIRCUIT DOUBLE THROW DOUBLE BREAK	DO NOT SCALE PRINT
FULL OVERTRAVEL FORCE ----- 4 LB MAX		UNLESS OTHERWISE SPECIFIED
RELEASE FORCE ----- 1/4 LB MIN		DIMENSIONS ARE IN INCHES
PRETRAVEL ----- ③ ----- 15° MAX	10A-120, 240, OR 480 VAC, 1/2 HP - 120 VAC	<b>TOLERANCES ARE:</b>
DIFFERENTIAL TRAVEL ----- ④ ----- 7° MAX	1 HP - 240 VAC, 0.8 A - 115 VDC, 0.4 A - 230 VDC	ONE PLACE (.0) ± .030
OVERTRAVEL ----- ⑤ ----- 60° MIN	PILOT DUTY 720VA - HEAVY DUTY	TWO PLACE (.00) ± .018
SWITCH BASIC REPLACEMENT ----- 1MN1	600 VAC MAX	THREE PLACE (.000) ± .008
		ANGLES ±
		WEIGHT