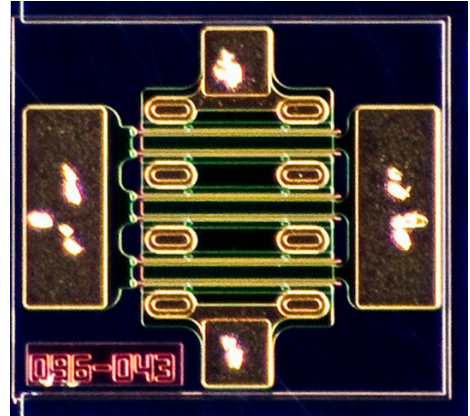


CGH60008D

8 W, 6.0 GHz, GaN HEMT Die

Description

Cree's CGH60008D is a gallium nitride (GaN) High Electron Mobility Transistor (HEMT). GaN has superior properties compared to silicon or gallium arsenide, including higher breakdown voltage, higher saturated electron drift velocity, and higher thermal conductivity. GaN HEMTs offer greater power density and wider bandwidths compared to Si and GaAs transistors.



PN: CGH60008D

Features

- 15 dB Typical Small Signal Gain at 4 GHz
- 12 dB Typical Small Signal Gain at 6 GHz
- 8 W Typical P_{SAT} @ 28 V Operation
- 5 W Typical P_{SAT} @ 20 V Operation
- High Breakdown Voltage
- High Temperature Operation
- Up to 6 GHz Operation
- High Efficiency

Applications

- 2-Way Private Radio
- Broadband Amplifiers
- Cellular Infrastructure
- Test Instrumentation
- Class A, AB, Linear amplifiers suitable for OFDM, W-CDMA, EDGE, CDMA waveforms



Packaging Information

- Bare die are shipped in Gel-Pak® containers
- Non-adhesive tacky membrane immobilizes die during shipment

 Large Signal Models Available for ADS and MWO

RoHS
COMPLIANT

Absolute Maximum Ratings (not simultaneous) at 25 °C

Parameter	Symbol	Rating	Units	Conditions
Drain-Source Voltage	V_{DSS}	120	VDC	25 °C
Gate-to-Source Voltage	V_{GS}	-10, +2	VDC	25 °C
Storage Temperature	T_{STG}	-65, +150	°C	
Operating Junction Temperature	T_J	225	°C	
Maximum Forward Gate Current	I_{GMAX}	2.1	mA	25 °C
Maximum Drain Current ¹	I_{DMAX}	0.75	A	25 °C
Thermal Resistance, Junction to Case (packaged) ²	$R_{\theta JC}$	8.9	°C/W	
Thermal Resistance, Junction to Case (die only)	$R_{\theta JC}$	5.7	°C/W	85 °C
Mounting Temperature (30 seconds)	T_s	320	°C	30 seconds

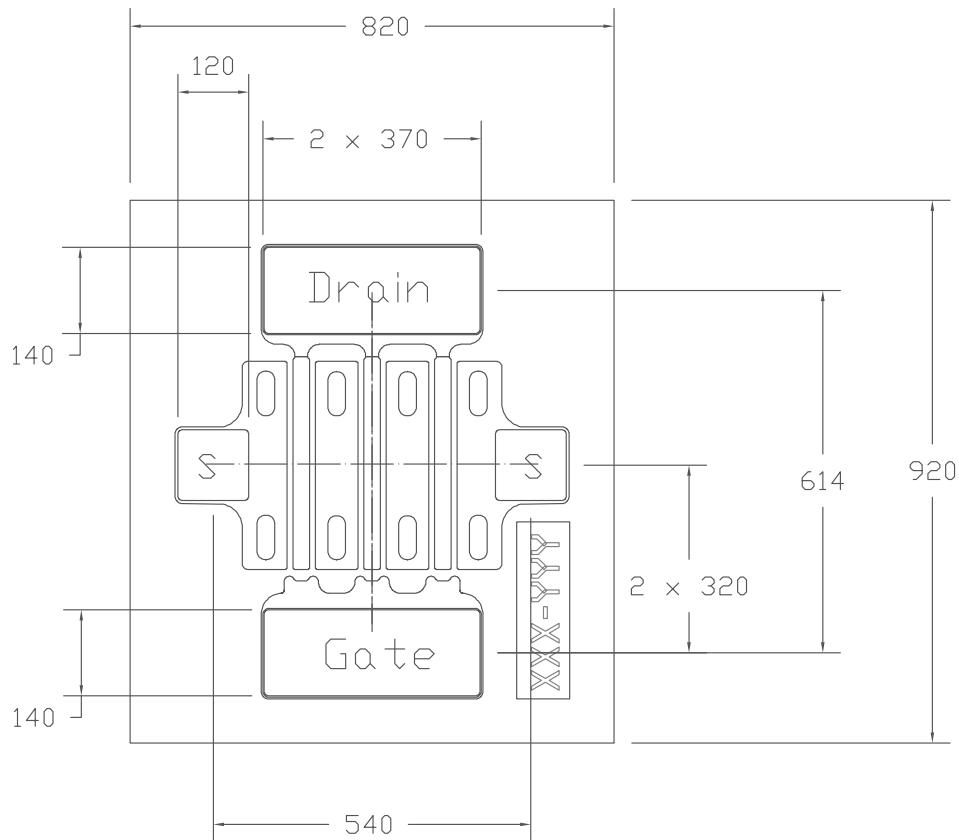
Notes:

¹ Current limit for long term, reliable operation² Eutectic die attach using 80/20 AuSn mounted to a 20 mil thick Cu carrier**Electrical Characteristics (Frequency = 4 GHz unless otherwise stated; $T_c = 25 °C$)**

Characteristics	Symbol	Min.	Typ.	Max.	Units	Conditions
DC Characteristics						
Gate Threshold Voltage	$V_{GS(th)}$	-3.8	-3.0	-2.3	V	$V_{DS} = 10 V, I_D = 2.1 mA$
Gate Quiescent Voltage	$V_{GS(Q)}$	-	-2.7	-	V _{DC}	$V_{DD} = 28 V, I_{DQ} = 60 mA$
Drain Current	I_{DS}	1.75	2.1	-	A	$V_{DS} = 6.0 V, V_{GS} = 2.0 V$
Drain-Source Breakdown Voltage	V_{BR}	84	-	-	V	$V_{GS} = -8 V, I_D = 2.1 mA$
On Resistance	R_{on}	-	1.6	-	Ω	$V_{DS} = 0.1 V$
Gate Forward Voltage	V_{G-ON}	-	1.9	-	V	$I_{GS} = 2.1 mA$
RF Characteristics						
Small Signal Gain	G_{SS}	-	15	-	dB	$V_{DD} = 28 V, I_{DQ} = 60 mA$
Saturated Power Output ¹	P_{SAT}	-	8	-	W	$V_{DD} = 28 V, I_{DQ} = 60 mA$
Drain Efficiency ²	η	-	65	-	%	$V_{DD} = 28 V, I_{DQ} = 60 mA, P_{SAT}$
Intermodulation Distortion	IM3	-	-30	-	dBc	$V_{DD} = 28 V, I_{DQ} = 60 mA, P_{OUT} = 8 W PEP$
Output Mismatch Stress	VSWR	-	-	10 : 1	Y	No damage at all phase angles, $V_{DD} = 28 V, I_{DQ} = 60 mA, P_{OUT} = 8 W CW$
Dynamic Characteristics						
Input Capacitance	C_{GS}	-	2.5	-	pF	$V_{DS} = 28 V, V_{GS} = -8 V, f = 1 MHz$
Output Capacitance	C_{DS}	-	0.5	-	pF	$V_{DS} = 28 V, V_{GS} = -8 V, f = 1 MHz$
Feedback Capacitance	C_{GD}	-	0.1	-	pF	$V_{DS} = 28 V, V_{GS} = -8 V, f = 1 MHz$

Notes:

¹ P_{SAT} is defined as $I_G = 0.2 mA$ ² Drain Efficiency = P_{OUT} / P_{DC}

DIE Dimensions (units in microns)

Overall die size 820 x 920 (+/- 50) microns, die thickness 100 (+/- 10) microns.
All Gate and Drain pads must be wire bonded for electrical connection.

Assembly Notes:

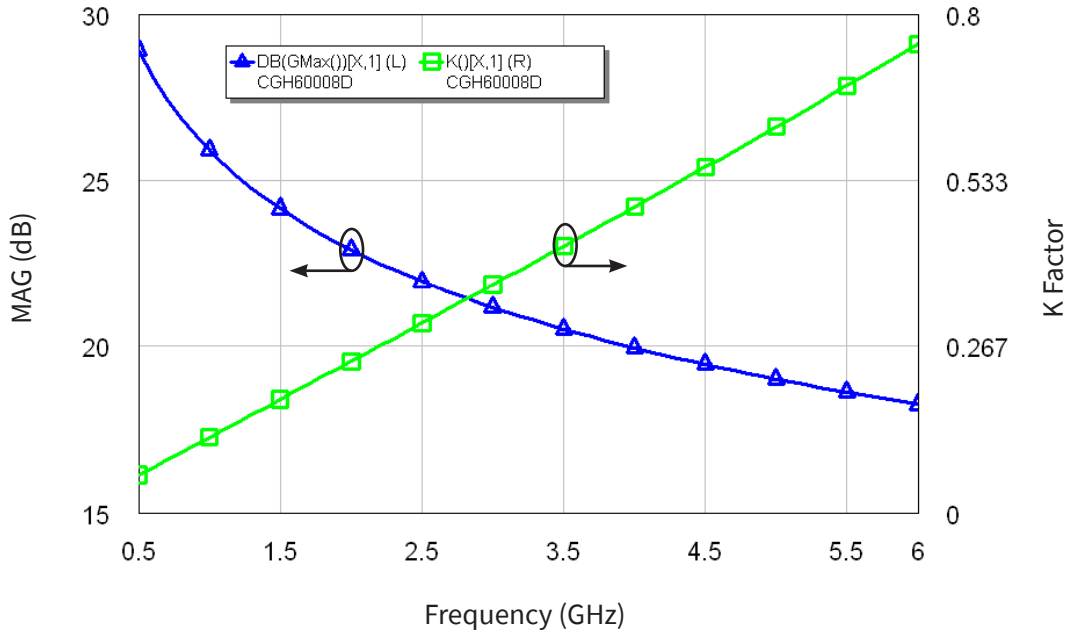
- Recommended solder is AuSn (80/20) solder. Refer to Cree's website for the Eutectic Die Bond Procedure application note at http://www.cree.com/products/wireless_documents.asp
- Vacuum collet is the preferred method of pick-up
- The backside of the die is the Source (ground) contact
- Die back side gold plating is 5 microns thick minimum
- Thermosonic ball or wedge bonding are the preferred connection methods
- Gold wire must be used for connections
- Use the die label (XXX-YYY) for correct orientation



Typical Performance

Simulated Maximum Available Gain and K Factor of the CGH60008D

$V_{DD} = 28\text{ V}, I_{DQ} = 100\text{ mA}$

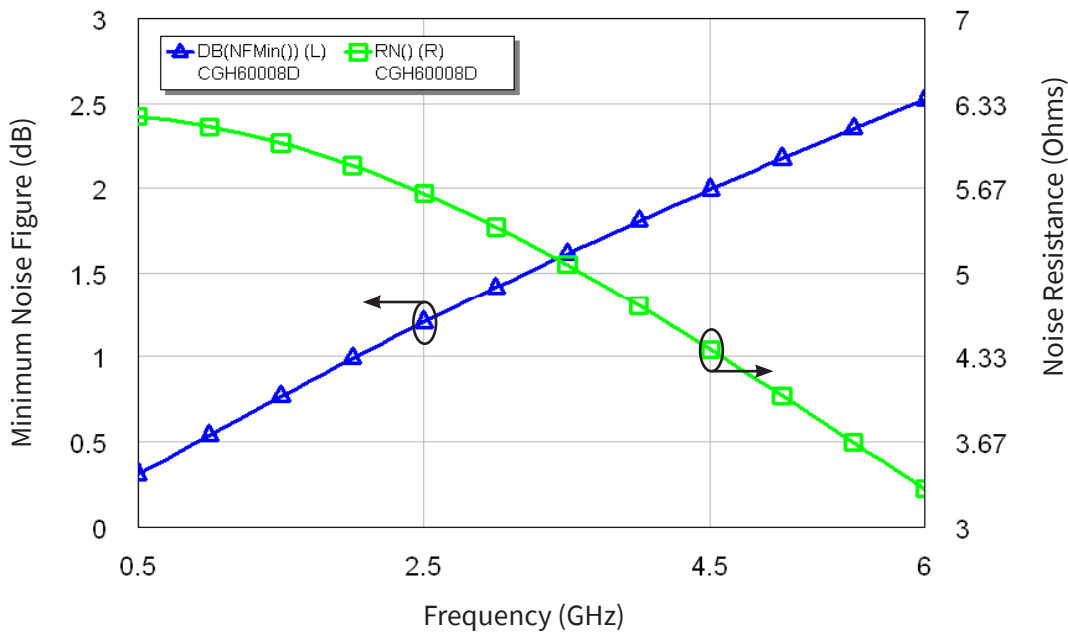


Intrinsic die parameters - reference planes at centers of gate and drain bonding pads.
No wire bonds assumed.

Typical Noise Performance

Simulated Minimum Noise Figure and Noise Resistance vs Frequency of the CGH60008D

$V_{DD} = 28\text{ V}, I_{DQ} = 100\text{ mA}$



Typical Die S-Parameters (Small Signal, $V_{DS} = 28$ V, $I_{DQ} = 60$ mA, magnitude / angle)

Frequency	Mag S11	Ang S11	Mag S21	Ang S21	Mag S12	Ang S12	Mag S22	Ang S22
500 MHz	0.949	-88.97	19.19	130.14	0.025	40.93	0.457	-46.50
600 MHz	0.940	-99.46	17.32	124.14	0.027	35.09	0.426	-51.93
700 MHz	0.933	-108.14	15.69	119.09	0.028	30.19	0.400	-56.47
800 MHz	0.928	-115.36	14.27	114.78	0.029	26.04	0.379	-60.31
900 MHz	0.923	-121.43	13.05	111.05	0.030	22.47	0.363	-63.61
1.0 GHz	0.920	-126.58	12.00	107.79	0.031	19.36	0.350	-66.51
1.1 GHz	0.917	-130.99	11.08	104.89	0.031	16.62	0.340	-69.08
1.2 GHz	0.914	-134.80	10.28	102.28	0.032	14.18	0.332	-71.39
1.3 GHz	0.913	-138.12	9.58	99.92	0.032	11.97	0.327	-73.50
1.4 GHz	0.911	-141.05	8.96	97.76	0.032	9.97	0.323	-75.45
1.5 GHz	0.910	-143.64	8.41	95.76	0.032	8.12	0.320	-77.26
1.6 GHz	0.909	-145.94	7.92	93.89	0.032	6.42	0.319	-78.96
1.7 GHz	0.908	-148.02	7.48	92.15	0.032	4.83	0.319	-80.57
1.8 GHz	0.908	-149.89	7.08	90.50	0.033	3.34	0.319	-82.10
1.9 GHz	0.907	-151.59	6.72	88.93	0.033	1.93	0.321	-83.55
2.0 GHz	0.907	-153.14	6.39	87.44	0.033	0.60	0.323	-84.95
2.1 GHz	0.907	-154.56	6.09	86.02	0.033	-0.67	0.325	-86.29
2.2 GHz	0.906	-155.86	5.82	84.65	0.033	-1.88	0.329	-87.59
2.3 GHz	0.906	-157.07	5.56	83.33	0.033	-3.04	0.332	-88.84
2.4 GHz	0.906	-158.19	5.33	82.06	0.033	-4.16	0.336	-90.06
2.5 GHz	0.906	-159.24	5.11	80.82	0.033	-5.23	0.340	-91.24
2.6 GHz	0.906	-160.21	4.91	79.62	0.033	-6.28	0.344	-92.39
2.7 GHz	0.906	-161.12	4.72	78.45	0.032	-7.29	0.349	-93.51
2.8 GHz	0.906	-161.98	4.55	77.31	0.032	-8.27	0.354	-94.60
2.9 GHz	0.906	-162.79	4.38	76.20	0.032	-9.22	0.359	-95.66
3.0 GHz	0.906	-163.55	4.23	75.11	0.032	-10.15	0.364	-96.70
3.2 GHz	0.906	-164.95	3.95	73.01	0.032	-11.94	0.375	-98.72
3.4 GHz	0.907	-166.23	3.70	70.97	0.032	-13.66	0.386	-100.66
3.6 GHz	0.907	-167.38	3.48	69.01	0.032	-15.31	0.397	-102.54
3.8 GHz	0.908	-168.44	3.28	67.10	0.032	-16.90	0.408	-104.34
4.0 GHz	0.908	-169.43	3.10	65.24	0.031	-18.44	0.420	-106.09
4.2 GHz	0.909	-170.34	2.93	63.43	0.031	-19.93	0.432	-107.79
4.4 GHz	0.909	-171.19	2.78	61.67	0.031	-21.38	0.443	-109.44
4.6 GHz	0.910	-171.99	2.64	59.94	0.031	-22.79	0.455	-111.05
4.8 GHz	0.910	-172.74	2.51	58.25	0.030	-24.17	0.467	-112.61
5.0 GHz	0.911	-173.46	2.39	56.59	0.030	-25.51	0.478	-114.14
5.2 GHz	0.912	-174.14	2.28	54.97	0.030	-26.82	0.489	-115.63
5.4 GHz	0.912	-174.79	2.18	53.37	0.030	-28.09	0.500	-117.08
5.6 GHz	0.913	-175.41	2.09	51.81	0.029	-29.34	0.511	-118.50
5.8 GHz	0.914	-176.01	2.00	50.27	0.029	-30.57	0.522	-119.89
6.0 GHz	0.914	-176.58	1.92	48.75	0.029	-31.76	0.533	-121.25

To download the s-parameters in s2p format, go to the [CGH60008D Product Page](#) and click on the documentation tab.

Typical Die S-Parameters (Small Signal, $V_{DS} = 28$ V, $I_{DQ} = 120$ mA, magnitude / angle)

Frequency	Mag S11	Ang S11	Mag S21	Ang S21	Mag S12	Ang S12	Mag S22	Ang S22
500 MHz	0.938	-100.12	21.07	124.88	0.030	35.53	0.466	-62.41
600 MHz	0.929	-110.15	18.68	119.23	0.032	30.01	0.428	-69.18
700 MHz	0.923	-118.17	16.69	114.61	0.034	25.53	0.399	-74.78
800 MHz	0.918	-124.66	15.03	110.76	0.035	21.80	0.376	-79.46
900 MHz	0.914	-129.99	13.63	107.48	0.035	18.66	0.358	-83.42
1.0 GHz	0.911	-134.43	12.45	104.64	0.036	15.95	0.344	-86.81
1.1 GHz	0.909	-138.17	11.44	102.15	0.036	13.59	0.334	-89.73
1.2 GHz	0.908	-141.36	10.58	99.92	0.037	11.50	0.326	-92.27
1.3 GHz	0.906	-144.11	9.82	97.91	0.037	9.62	0.320	-94.48
1.4 GHz	0.905	-146.49	9.16	96.08	0.037	7.91	0.316	-96.43
1.5 GHz	0.905	-148.59	8.58	94.39	0.037	6.35	0.314	-98.16
1.6 GHz	0.904	-150.43	8.07	92.82	0.037	4.91	0.313	-99.70
1.7 GHz	0.904	-152.08	7.61	91.34	0.037	3.57	0.312	-101.09
1.8 GHz	0.903	-153.55	7.19	89.96	0.037	2.32	0.313	-102.34
1.9 GHz	0.903	-154.87	6.82	88.64	0.037	1.14	0.314	-103.47
2.0 GHz	0.903	-156.06	6.48	87.39	0.037	0.02	0.316	-104.51
2.1 GHz	0.903	-157.14	6.17	86.20	0.037	-1.05	0.319	-105.46
2.2 GHz	0.903	-158.13	5.89	85.05	0.037	-2.07	0.321	-106.35
2.3 GHz	0.903	-159.04	5.63	83.94	0.037	-3.04	0.325	-107.17
2.4 GHz	0.903	-159.87	5.39	82.87	0.037	-3.98	0.328	-107.95
2.5 GHz	0.903	-160.64	5.17	81.83	0.037	-4.89	0.332	-108.67
2.6 GHz	0.903	-161.35	4.97	80.82	0.037	-5.76	0.336	-109.36
2.7 GHz	0.903	-162.00	4.78	79.84	0.037	-6.61	0.341	-110.02
2.8 GHz	0.903	-162.62	4.60	78.89	0.037	-7.44	0.345	-110.64
2.9 GHz	0.903	-163.19	4.43	77.95	0.037	-8.24	0.350	-111.25
3.0 GHz	0.903	-163.72	4.28	77.04	0.037	-9.02	0.355	-111.83
3.2 GHz	0.904	-164.69	3.99	75.27	0.037	-10.53	0.365	-112.93
3.4 GHz	0.904	-165.55	3.74	73.56	0.037	-11.98	0.376	-113.98
3.6 GHz	0.905	-166.31	3.52	71.91	0.036	-13.37	0.387	-114.98
3.8 GHz	0.906	-167.00	3.32	70.31	0.036	-14.71	0.398	-115.94
4.0 GHz	0.906	-167.62	3.13	68.75	0.036	-16.00	0.409	-116.88
4.2 GHz	0.907	-168.18	2.97	67.23	0.036	-17.26	0.420	-117.79
4.4 GHz	0.908	-168.70	2.81	65.75	0.036	-18.48	0.431	-118.68
4.6 GHz	0.909	-169.17	2.67	64.30	0.035	-19.67	0.442	-119.55
4.8 GHz	0.909	-169.61	2.55	62.89	0.035	-20.82	0.453	-120.40
5.0 GHz	0.910	-170.02	2.43	61.50	0.035	-21.95	0.464	-121.25
5.2 GHz	0.911	-170.40	2.32	60.14	0.035	-23.05	0.475	-122.08
5.4 GHz	0.912	-170.75	2.22	58.80	0.034	-24.12	0.486	-122.89
5.6 GHz	0.913	-171.08	2.12	57.49	0.034	-25.17	0.497	-123.70
5.8 GHz	0.914	-171.39	2.03	56.20	0.034	-26.20	0.507	-124.50
6.0 GHz	0.914	-171.69	1.95	54.94	0.033	-27.20	0.517	-125.28

To download the s-parameters in s2p format, go to the [CGH60008D Product Page](#) and click on the documentation tab.


Typical Die S-Parameters (Small Signal, $V_{DS} = 28\text{ V}$, $I_{DQ} = 300\text{ mA}$, magnitude / angle)

Frequency	Mag S11	Ang S11	Mag S21	Ang S21	Mag S12	Ang S12	Mag S22	Ang S22
500 MHz	0.937	-108.13	22.00	121.21	0.028	31.85	0.404	-72.20
600 MHz	0.930	-117.71	19.30	115.84	0.029	26.61	0.372	-79.50
700 MHz	0.925	-125.21	17.11	111.51	0.030	22.42	0.348	-85.45
800 MHz	0.921	-131.20	15.31	107.94	0.031	18.98	0.330	-90.35
900 MHz	0.918	-136.06	13.83	104.92	0.031	16.09	0.317	-94.43
1.0 GHz	0.916	-140.08	12.59	102.31	0.032	13.61	0.307	-97.85
1.1 GHz	0.915	-143.44	11.54	100.03	0.032	11.46	0.300	-100.74
1.2 GHz	0.913	-146.29	10.65	97.99	0.032	9.55	0.295	-103.19
1.3 GHz	0.913	-148.74	9.88	96.15	0.032	7.85	0.292	-105.28
1.4 GHz	0.912	-150.86	9.20	94.47	0.033	6.30	0.290	-107.07
1.5 GHz	0.911	-152.71	8.61	92.92	0.033	4.88	0.289	-108.62
1.6 GHz	0.911	-154.34	8.09	91.48	0.033	3.56	0.289	-109.96
1.7 GHz	0.911	-155.79	7.62	90.12	0.033	2.34	0.290	-111.13
1.8 GHz	0.910	-157.09	7.20	88.84	0.033	1.19	0.292	-112.16
1.9 GHz	0.910	-158.25	6.83	87.63	0.033	0.11	0.294	-113.08
2.0 GHz	0.910	-159.30	6.49	86.47	0.033	-0.92	0.297	-113.89
2.1 GHz	0.910	-160.25	6.17	85.36	0.033	-1.90	0.300	-114.62
2.2 GHz	0.910	-161.12	5.89	84.29	0.033	-2.84	0.303	-115.28
2.3 GHz	0.910	-161.92	5.63	83.26	0.033	-3.74	0.307	-115.88
2.4 GHz	0.910	-162.65	5.39	82.26	0.033	-4.61	0.311	-116.43
2.5 GHz	0.910	-163.32	5.17	81.29	0.033	-5.44	0.315	-116.94
2.6 GHz	0.910	-163.95	4.97	80.35	0.033	-6.26	0.320	-117.42
2.7 GHz	0.910	-164.52	4.77	79.43	0.033	-7.05	0.324	-117.87
2.8 GHz	0.911	-165.06	4.60	78.54	0.032	-7.81	0.329	-118.30
2.9 GHz	0.911	-165.56	4.43	77.66	0.032	-8.56	0.334	-118.70
3.0 GHz	0.911	-166.03	4.28	76.80	0.032	-9.29	0.339	-119.09
3.2 GHz	0.911	-166.88	3.99	75.13	0.032	-10.70	0.349	-119.83
3.4 GHz	0.912	-167.63	3.74	73.51	0.032	-12.05	0.360	-120.53
3.6 GHz	0.912	-168.31	3.52	71.94	0.032	-13.36	0.371	-121.21
3.8 GHz	0.913	-168.91	3.32	70.42	0.032	-14.62	0.382	-121.87
4.0 GHz	0.913	-169.46	3.13	68.94	0.032	-15.85	0.393	-122.52
4.2 GHz	0.914	-169.95	2.97	67.49	0.031	-17.03	0.404	-123.16
4.4 GHz	0.914	-170.41	2.82	66.07	0.031	-18.19	0.415	-123.79
4.6 GHz	0.915	-170.83	2.68	64.68	0.031	-19.32	0.426	-124.43
4.8 GHz	0.916	-171.21	2.55	63.32	0.031	-20.42	0.437	-125.06
5.0 GHz	0.916	-171.57	2.43	61.99	0.031	-21.49	0.448	-125.69
5.2 GHz	0.917	-171.91	2.33	60.68	0.030	-22.54	0.458	-126.32
5.4 GHz	0.918	-172.22	2.22	59.39	0.030	-23.57	0.469	-126.95
5.6 GHz	0.919	-172.51	2.13	58.12	0.030	-24.58	0.480	-127.57
5.8 GHz	0.919	-172.79	2.04	56.88	0.030	-25.56	0.490	-128.20
6.0 GHz	0.920	-173.05	1.96	55.66	0.029	-26.53	0.500	-128.82

To download the s-parameters in s2p format, go to the [CGH60008D Product Page](#) and click on the documentation tab.



Electrostatic Discharge (ESD) Classifications

Parameter	Symbol	Class	Test Methodology
Human Body Model	HBM	1A (> 250 V)	JEDEC JESD22 A114-D
Charge Device Model	CDM	II (200 < 500 V)	JEDEC JESD22 C101-C

Product Ordering Information

Order Number	Description	Unit of Measure
CGH60008D	GaN HEMT	Each



For more information, please contact:

4600 Silicon Drive
Durham, North Carolina, USA 27703
www.wolfspeed.com/RF

Sales Contact
RFSales@cree.com

Notes

Disclaimer

Specifications are subject to change without notice. “Typical” parameters are the average values expected by Cree in large quantities and are provided for information purposes only. Cree products are not warranted or authorized for use as critical components in medical, life-saving, or life-sustaining applications, or other applications where a failure would reasonably be expected to cause severe personal injury or death. No responsibility is assumed by Cree for any infringement of patents or other rights of third parties which may result from use of the information contained herein. No license is granted by implication or otherwise under any patent or patent rights of Cree.