

RM Cores (6295140121)

Part Number: 6295140121

95 RM CORE SET

RM (Rectangular Modulus) cores allow better shielding than E type geometries while also providing easier winding accessibility and better power dissipation than a pot core configuration. Fair-Rite's standard RM cores all have a solid center post and standard height, low profile and alternate materials are available upon request.

□ RM cores can be supplied with the center post gapped to a mechanical dimension or an A_L value.

[Catalog Drawing](#)

[3D Model](#)

Weight indicated is per pair or set.

Weight: 3.2 (g)

Dim	mm	mm tol	nominal inch	inch misc.
A	14.3	± 0.30	0.563	—
B	5.2	± 0.10	0.205	—
C	6.6	± 0.20	0.26	—
D	3.25	± 0.15	0.128	—
E	10.4	± 0.20	0.409	—
F	4.8	± 0.10	0.189	—
G	6	min	0.237	min
J	12.05	± 0.25	0.474	—

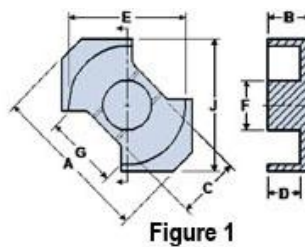



Figure 1

Chart Legend

$\Sigma l / A$: Core Constant, l_e : Effective Path Length, A_e : Effective Cross- Sectional Area, V_e : Effective Core Volume

A_L : Inductance Factor 

Explanation of Part Numbers: Digits 1 & 2 = product class and 3 & 4 = material grade.

Electrical Properties	
A_L (nH)	2100 ±25%
A_e (cm ²)	0.233
$\Sigma l / A$ (cm ⁻¹)	10.3
l_e (cm)	2.39
V_e (cm ³)	0.555
A_{min} (cm ²)	0.181

A_L value is measured at 1 kHz, B < 10 gauss.