

# High Frequency Ceramic Solutions

## 5.4 GHz Band Pass Filter

P/N 5425BP15A1050

Detail Specification: 1/16/2013

Page 1 of 2

### General Specifications

<b>Part Number</b>	5425BP15A1050	<b>Impedance</b>	50 Ω
<b>Frequency (MHz)</b>	4900 ~ 5950	<b>Input Power</b>	2W max.
<b>Attenuation (min.)</b>	40 dB @ 1280 ~ 3300MHz	<b>Reel Quantity</b>	4,000
<b>Attenuation (min.)</b>	25 dB @ 3300 ~ 4000MHz	<b>Operating Temperature</b>	-40 to +85°C
<b>Attenuation (min.)</b>	7 dB @ 4375 ~ 4465MHz	<b>Storage Temperature*</b>	-40 to +85°C
<b>Attenuation (min.)</b>	14 dB @ 7300 ~ 8930MHz	<b>Recommended Storage Conditions*</b>	+5 ~ +35°C, Humidity: 45~75%RH
<b>Attenuation (min.)</b>	25 dB @ 9800 ~ 11900MHz		
<b>Insertion Loss</b>	2.0 dB max.		
<b>Return Loss</b>	9.0 dB min.		

\*18 months in vacuum sealed bag and 1 week after opened. Go to: [www.johansontechnology.com/silverleads](http://www.johansontechnology.com/silverleads) for details

<b>P/N Suffix</b>	<b>Packing Style</b>	Bulk	Suffix = S	eg. 5425BP15A1050S
		T & R	Suffix = E	eg. 5425BP15A1050E
	<b>Evaluation Board</b>	5425BP15A1050-EB1SMA		

### Mechanical Dimensions

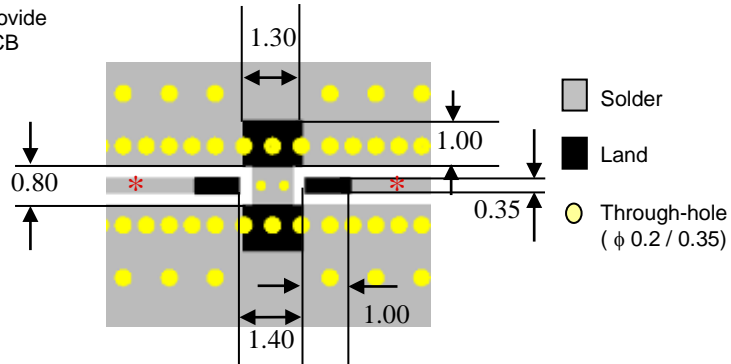
	In	mm
L	0.079 ± 0.006	2.00 ± 0.15
W	0.049 ± 0.004	1.25 ± 0.10
T	0.037 ± 0.004	0.95 ± 0.10
a	0.051 ± 0.006	1.30 ± 0.15
b	0.012 ± 0.006	0.30 ± 0.15
c	0.010 ± 0.006	0.25 ± 0.15
d	0.014 ± 0.006	0.35 ± 0.15

### Terminal Configuration

No.	Function
1	GND
2	IN
3	GND
4	OUT

### Mounting Considerations

\* Line width should be designed to provide 50 ohm impedance, depending on PCB material and thickness



Units: mm

Johanson Technology, Inc. reserves the right to make design changes without notice.  
All sales are subject to Johanson Technology, Inc. terms and conditions.



[www.johansontechnology.com](http://www.johansontechnology.com)

4001 Calle Tecate • Camarillo, CA 93012 • TEL 805.389.1166 FAX 805.389.1821

Ver. 4.0

2012 Johanson Technology, Inc. All Rights Reserved

# High Frequency Ceramic Solutions

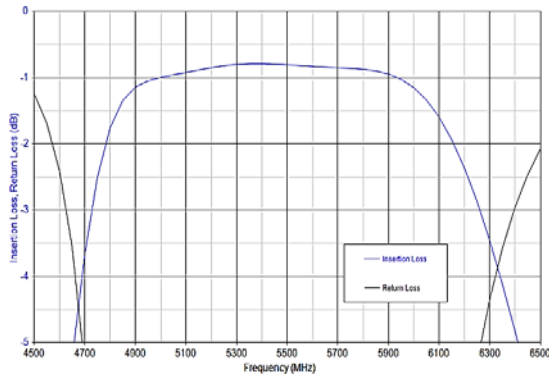
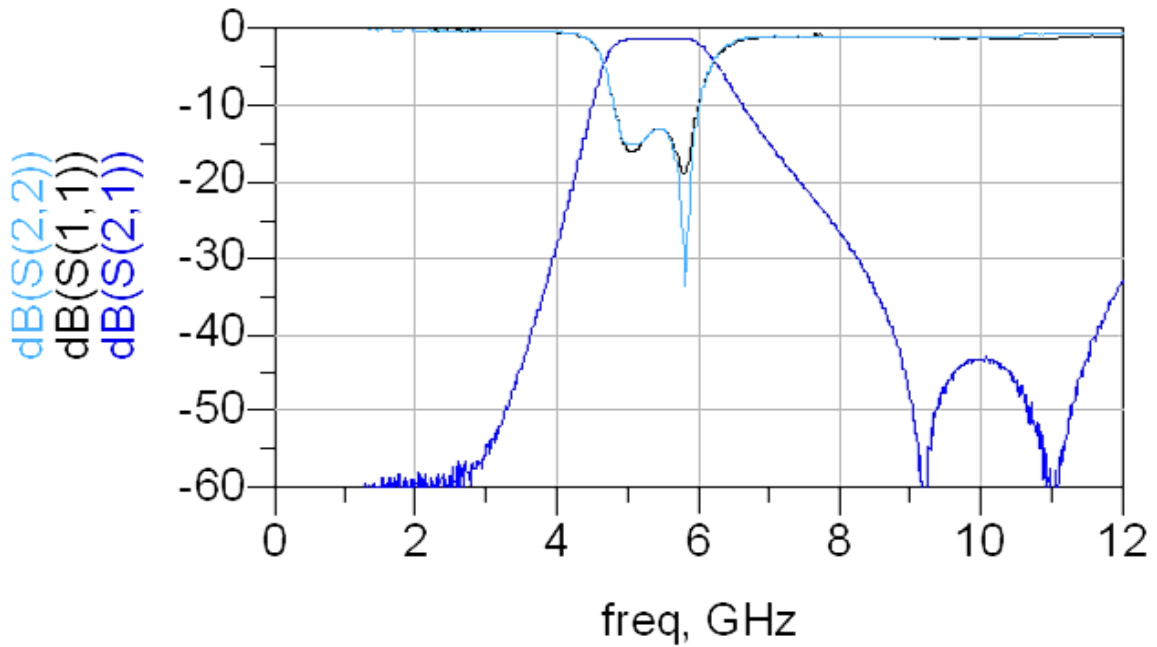
## 5.4 GHz Band Pass Filter

P/N 5425BP15A1050

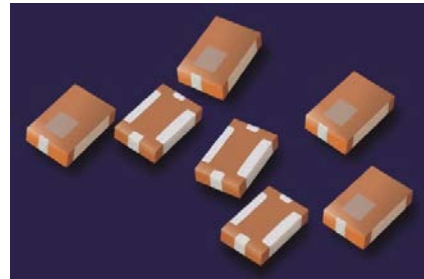
Detail Specification: 1/16/2013

Page 2 of 2

### Typical Electrical Performance (T=25°C)



**Solder Paste recommendation:**  
SAC 305 type is recommended.



Johanson Technology, Inc. reserves the right to make design changes without notice.  
All sales are subject to Johanson Technology, Inc. terms and conditions.

**JOHANSON**  
TECHNOLOGY



[www.johansontechnology.com](http://www.johansontechnology.com)

4001 Calle Tecate • Camarillo, CA 93012 • TEL 805.389.1166 FAX 805.389.1821

Ver. 4.0

2012 Johanson Technology, Inc. All Rights Reserved