

# MICRO SWITCH

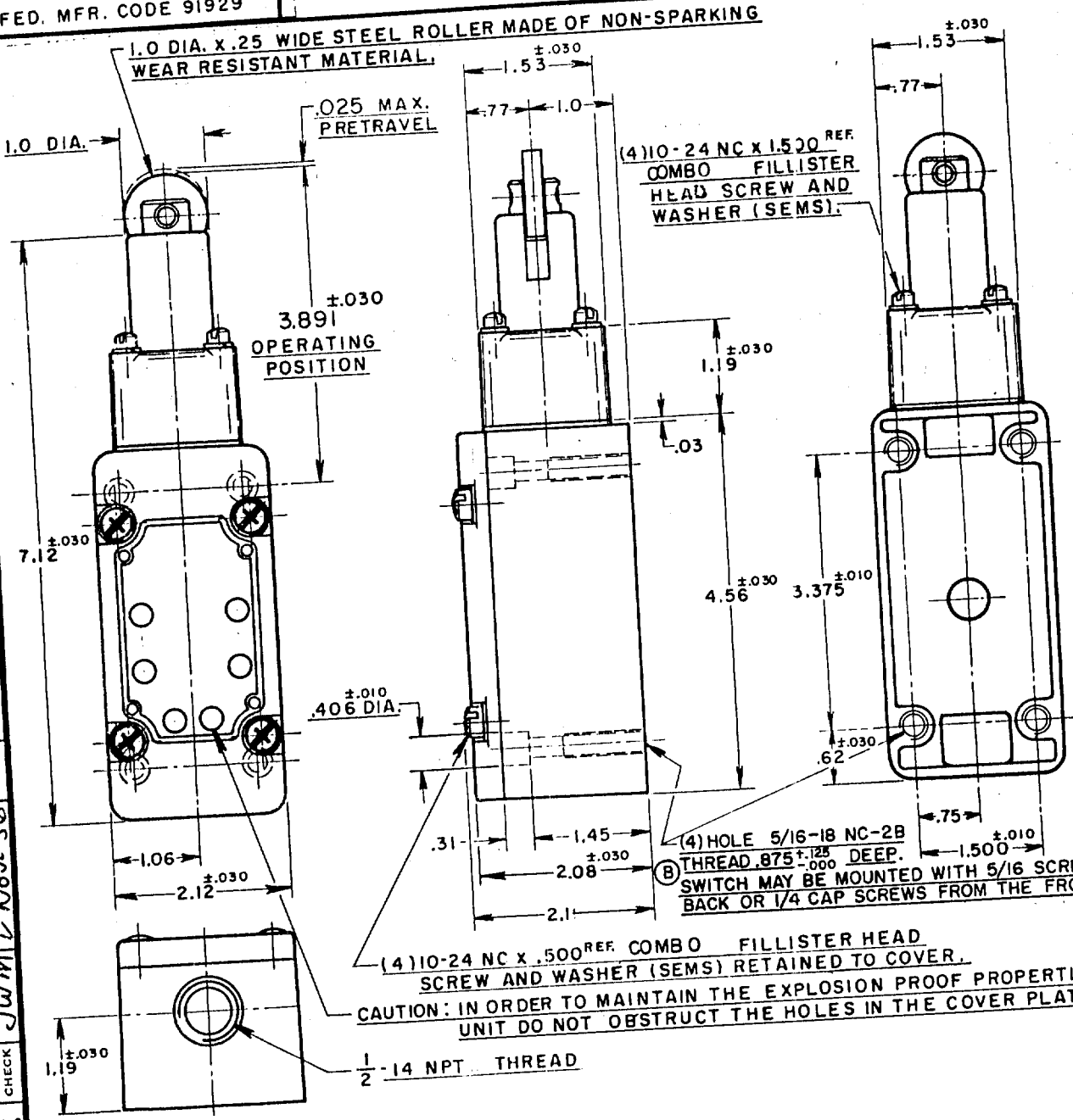
A DIVISION OF HONEYWELL-REGULATOR COMPANY  
 FREEPORT, ILLINOIS  
 FED. MFR. CODE 91929

# SWITCH - ENCLOSED

5ML1-E1

5

(M) 5ML1-E1  
 ISSUE 3  
 REPLACES  
 RELEASE NO.  
 NUMBER  
 12  
 CHECK  
 B I O N S  
 D 10928  
 L. Z.  
 OCT. 56  
 O 11247  
 L. B.  
 FEB. 58  
 O 12789  
 B. F.  
 MAY 58  
 O 13022  
 I. B. F.  
 AUG. 58  
 CO 24575  
 A B S  
 SEP 68  
 CO 58367  
 J A S  
 NOV 85  
 O 55051-C  
 A  
 JAN 86  
 CO 63739  
 O J S  
 JUN 88  
 CO 74287  
 G J W  
 APR 93  
 O-50378  
 DRAWN  
 R. L. Z. 31 OCT. 56  
 CHECK  
 GCH 13 Nov. 56



THIS DRAWING COVERS A PROPRIETARY ITEM AND IS THE PROPERTY OF MICRO SWITCH, A DIVISION OF HONEYWELL. THIS DRAWING IS NOT TO BE COPIED OR USED WITHOUT THE APPROVAL OF MICRO SWITCH.

**NOTE-**

1. ROLLER ASSEMBLY MAY BE RE-ASSEMBLED 90° FROM POSITION SHOWN.
2. IT IS ESSENTIAL THAT THE CONDUIT OPENING BE PROPERLY SEALED IN ORDER TO MAINTAIN THE EXPLOSION PROOF PROPERTIES.
3. LISTED BY UNDERWRITERS LABORATORY, INC. FOR USE IN CLASS I GROUPS C AND D VAPOR-AIR ATMOSPHERES, AND CLASS 2 GROUPS E, F AND G DUST-AIR ATMOSPHERES.

<b>CHARACTERISTICS</b> OPERATING FORCE --- 6 LBS. APPROX. RELEASE FORCE --- 4 LBS. APPROX. DIFFERENTIAL TRAVEL --- .005 MAX. OVERTRAVEL --- .500 MIN. SWITCH-BASIC REPLACEMENT --- IMKI	<b>ELECTRICAL DATA</b> CONTACT ARRANGEMENT S. P. D. T.	SCALE 1/2 TO 1 DO NOT SCALE PRINT UNLESS OTHERWISE SPECIFIED DIMENSIONS ARE IN INCHES <b>TOLERANCES ARE:</b> ONE PLACE (.0) ±.030 TWO PLACE (.00) ±.015 THREE PLACE (.000) ±.008 ANGLES ± WEIGHT
	20A-120, 240 OR 480 VAC; 3/4 H.P.-120 VAC 1 1/2 H.P.-240 VAC; 1/2 A-115 VDC; 1/4 A-230 VDC PILOT DUTY 1720VA-HEAVY DUTY 600 VAC MAX.	

(A)  
(C)  
(D)

