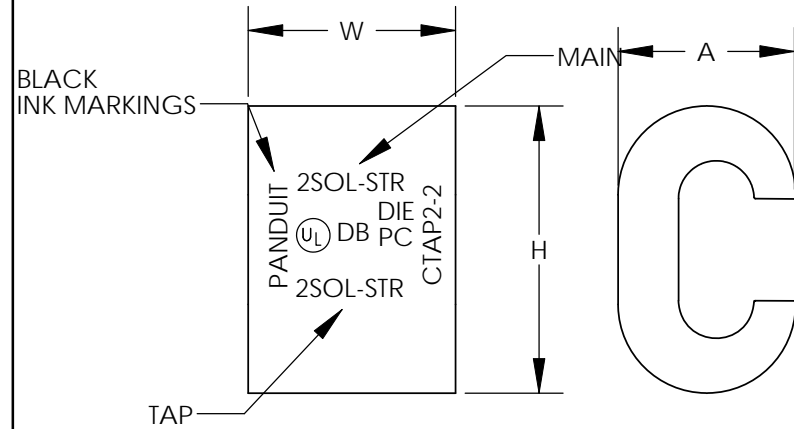


THIS COPY IS PROVIDED ON A RESTRICTED BASIS AND IS NOT TO BE USED IN ANY WAY DETRIMENTAL TO THE INTERESTS OF PANDUIT CORP.



PANDUIT PART NUMBER	COPPER CONDUCTOR SIZE		DIMENSIONS			TAP COVER P/N (REF)	PANDUIT CRIMP TOOL PART NUMBERS		WIRE STRIP LENGTH (+1/32/-0)
	MAIN	TAP	W	A	H		CT-920, CT-920CH, CT-2930, CT-2920, CT-930, CT-930CH, CT-940CH*, CT-2940*	CT-2001, CT-2002, CT-3001	
CTAP4-8-L	#6-#4 SOL OR STR	#8 SOL OR STR	0.63	0.46	0.73	CVR6-1	CD-920-BG PBG (1)	CD-2001-BG PBG (1)	3/4
CTAP4-6-L	#6 STR, #4 SOL OR STR	#6 SOL OR STR	0.63	0.48	0.73	CVR6-1	CD-920-BG PBG (1)	CD-2001-BG PBG (1)	3/4
CTAP4-4-L	#4 SOL OR STR	#4 STR	0.63	0.46	0.81	CVR6-1	CD-920-BG PBG (1)	CD-2001-BG PBG (1)	3/4
CTAP2-4-Q	#2 SOL OR STR	#8- #4 SOL OR STR	0.76	0.60	0.96	CVR2-1	CD-920-C PC (1)	CD-2001-C PC (2)	7/8
CTAP2-2-X	#2 SOL OR STR	#2 SOL OR STR	0.75	0.60	1.05	CVR2-1	CD-920-C PC (1)	CD-2001-C PC (2)	7/8
CTAP2/0-2-X	#1/0 - #2/0 STR	#8 - #2 SOL OR STR	0.93	0.80	1.32	CVR2-1	CD-920-O PO (1)	-----	1-1/16
CTAP2/0-2/0-X	#1/0 - #2/0 STR	#1/0 - #2/0 STR	0.93	0.80	1.37	CVR250-1	CD-920-O PO (1)	-----	1-1/16
CTAP4/0-2-X	#3/0 - #4/0 STR	#6 - #2 SOL OR STR	1.08	0.94	1.66	CVR500-1	CD-920-D3 PD3 (1)	-----	1-1/4
CTAP4/0-2/0-X	#3/0 - #4/0 STR	#1/0 - #2/0 STR	1.08	1.00	1.57	CVR500-1	CD-920-D3 PD3 (1)	-----	1-1/4
CTAP4/0-4/0-X	#3/0 - #4/0 STR	#3/0 - #4/0 STR	1.08	1.00	1.57	CVR500-1	CD-920-D3 PD3 (1)	-----	1-1/4

* CT-940CH AND CT-2940 REQUIRE CD-940-DA ADAPTER FOR CD-920 DIES

NOTES:

- FOR COPPER TO COPPER CONNECTIONS ONLY.
- UL LISTED PER UL 486A FOR POWER CONNECTOR APPLICATIONS UP TO 35KV.
- UL LISTED PER UL 467 FOR GROUNDING AND BONDING AND FOR SUITABLE DIRECT BURIAL IN EARTH OR CONCRETE.
- UL TEMPERATURE RATING 90°C
- UL FLAMMABILITY RATING FOR CVR COVERS IS V-0.
- CVR COVERS ARE NOT UL LISTED WITH CTAP CONNECTORS.
- MATERIAL: HIGH CONDUCTIVITY COPPER
- PACKAGING QTY CODES: -L = 50
-Q=25
-X=10



09	12/11	JHNU	RGB	REVISD NOTE 5: CVR WAS DVR REVISD DIE PART NUMBERS: CD-920 WAS CD920	10N002BA-NC	RGB	RGB
08	12/11	JHNU	RGB	ADDED CT-2930, CT-3001, CT-2002 TO TABLE	10N002BA-NC	RGB	RGB
07	12/10	JHNU	JHNU	ADDED DB LOGO	10N002BA-NC	FLD	FLD
06	4/10	JHNU	JHNU	REVISD DWG NUMBER: 10N002BA-NC WAS C41220 CONVERTED DWG TO SOLIDWORKS REVISD UL LABEL	10N002BA-NC		FLD
05	10/09	JESH	JESH	UPDATED TABLE TAP COVER P/N REF. TAPC COVERS ARE REPLACED WITH CVR COVERS			
				ADDED NOTES			
04	2/02	SAB		ADDED DB TO THE STAMP, ADDED NOTES 6 & 7	09827	LM	JAC
03	1/02	SAB	JAC	ADDED WIRE CONNECTOR UNDER THE UL SYMBOL	09788	LM	JAC
02	11/01	BDK	RLS	REMOVED CTAP2-4-TL, CTAP2-2-TL, ADDED TOOLING INFORMATION AND UPDATED TABLE.	-----	----	----
--	-----	-----	----	UPDATED THE NOTES, AND ADDED BLACK INK MARKINGS LEADER.	09328		JAC
01	5/01	ED	SKB	REVISD TABLE TO REFLECT PRODUCT EXPANSION	09354		JAC
00	9/97	TM	WJB	RELEASED	06270	DH	LA
REV	DATE	BY	CHK	DESCRIPTION	ECN	-R	SUP

PANDUIT CORP. TINLEY PARK, ILLINOIS

CTAP COPPER COMPRESSION TAPS
CUSTOMER DRAWING

UNLESS OTHERWISE SPECIFIED DIMENSIONAL TOLERANCES ARE:		UNLESS OTHERWISE SPECIFIED, ALL DIMENSIONS ARE GIVEN IN INCHES, THIRD ANGLE PROJECTION	
(.X) ±	(.XXX) ±		
(.XX) ±	ANGLES ±		
DRAWN BY TSM	MAT'L:	SCALE	NONE
DATE 9/97		DRAWING NO / CAD FILE	DWG B SIZE
CHK'D WJB		10N002BA-NC	