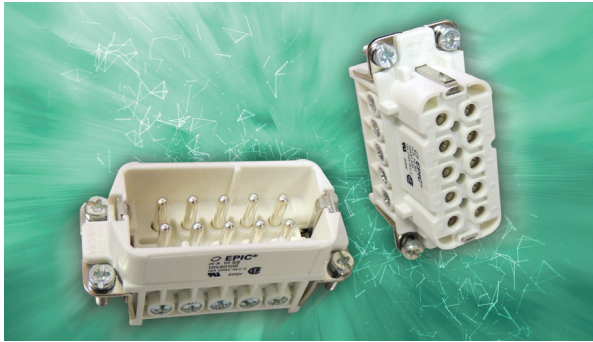


EPIC® HA series

Compact screw-terminated inserts for medium power & control applications



Similar to the HBE series inserts but more compact, EPIC® HA series inserts are used whenever space is limited. EPIC® HA 3/4 inserts and housings provide the smallest possible footprint in a 10A power connector. HA 10-48 inserts are unique because of their shortened ground straps, which still allow for a wire cross-section up to 2.5 mm². HA 3-48 screw-terminated inserts fit into EPIC® HA series housings. A modified EPIC® HB 48 housing can fit 64 contacts.

Technical data

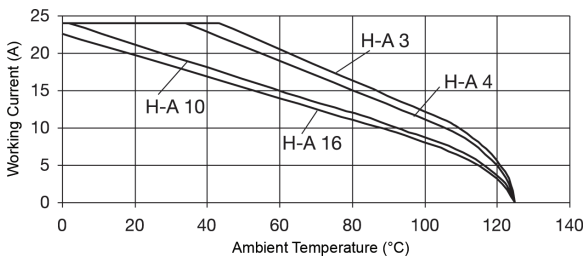
| | | | |
|--------------------------------|---|--|--|
| Number of contacts: | 3, 4, 10, 16, 32, 48, 64 (+PE) | Rated current: | |
| Temperature range: | -40°C to +100°C | - UL: | |
| - short-term: | up to +125°C | - EPIC® HA 3/4: | 10A |
| Pollution level: | 3 | - EPIC® HA 10 - 64: | 14A |
| Dimensioning transient: | 4 kV | - CSA: | |
| Mating cycles: | - per DIN EN 61984:2008 | - EPIC® HA 3/4: | 10A |
| | Service Life Test: Tested to 100 cycles and passed | - EPIC® HA 10 - 64: | 16A |
| | - per Contact Thermal Test: Useful service up to 500 cycles is possible at rated voltage and current* | - IEC: | |
| Test voltage: | 4 kV | - EPIC® HA 3/4: | 23A |
| Rated voltage: | | - EPIC® HA 10 -64: | 16A |
| - UL: | 600V | - SEV: | 16A |
| - CSA: | 600V | Wire size: | |
| - IEC: | | - EPIC® HA 3/4: | |
| - EPIC® HA 3/4: | 400V | - solid or stranded wire with ferrule: | 20 - 14 AWG (0.5 - 2.5 mm ²)** |
| - EPIC® HA 10 - 64: | 250V | - EPIC® HA 10 - 64: | |
| - SEV: | 250V | - solid or stranded wire with ferrule: | 20 - 14 AWG (0.5 - 2.5 mm ²)** |
| | | - for stranded wire without ferrule: | 18 - 14 AWG (0.75 - 2.5 mm ²) (requires insert with wire protection) |
| | | Contact material: | silver-plated copper alloy |
| | | Contact resistance: | 1.5 - 4 mΩ |

* In dry, non-conductive, non-corrosive environments when protected in a housing rated at least IP54 and disconnected for cycling and maintenance only.

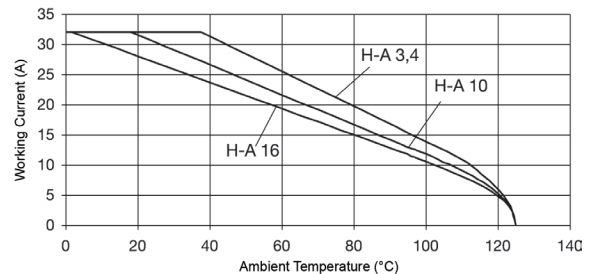
** May be limited, depending on the ferrule crimp profile.

EPIC® HA derating curves

16 AWG (1.5 mm²)



14 AWG (2.5 mm²)

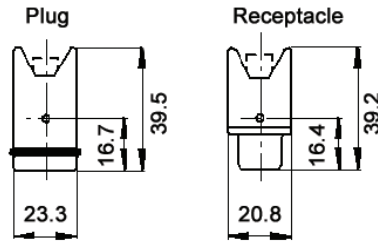
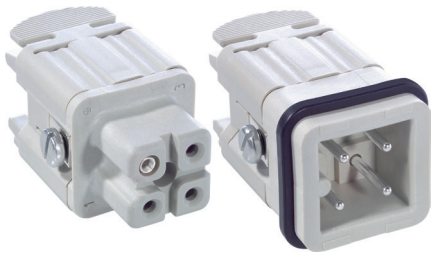


HA series

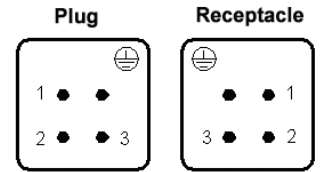
Rectangular connector inserts

EPIC® HA 3

screw termination: 600V, 10A




all dimensions are in mm



view from cable side


| Termination | Plug | Receptacle |
|-------------------|----------|------------|
| screw termination | 10420000 | 10421000 |

Complete the installation



Coding pin:
10451400

Compatible housing



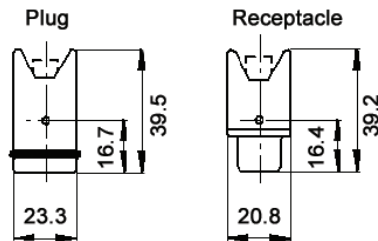
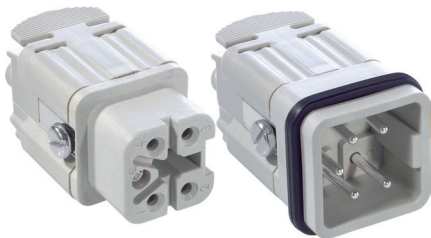
HA 3/4
page 413

Approvals

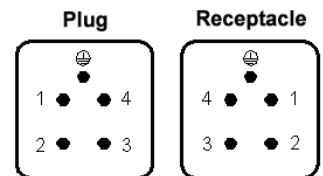


EPIC® HA 4

screw termination: 600V, 10A




all dimensions are in mm



view from cable side


| Termination | Plug | Receptacle |
|-------------------|----------|------------|
| screw termination | 10431000 | 10432000 |

Complete the installation



Coding pin:
10451400

Compatible housing



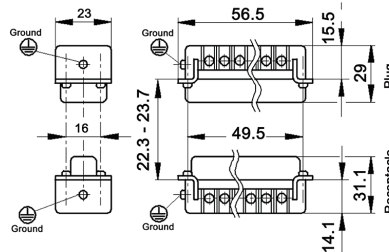
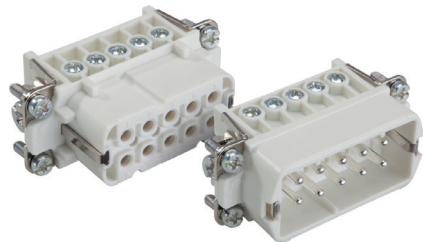
HA 3/4
page 413

Approvals

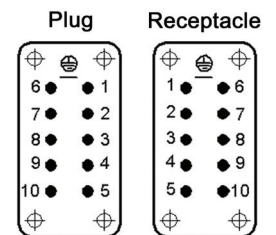


EPIC® HA 10

screw termination: 600V, 14A



all dimensions are in mm



view from cable side

| Termination | Wire protection | Plug | Receptacle |
|-------------------|-----------------|----------|------------|
| screw termination | yes | 10440100 | 10441100 |
| screw termination | no | 10440000 | 10441000 |

Compatible housing



HA 10
page 415

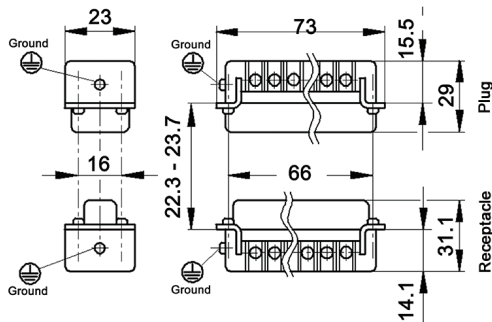
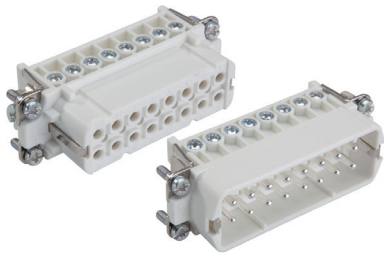
Approvals



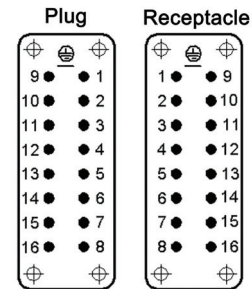
If not otherwise specified, all values relating to the product are nominal values. Photographs are not to scale and are not true representations of the products in question.

EPIC® HA 16

screw termination: 600V, 14A



all dimensions are in mm



view from cable side

| Termination | Wire protection | Plug | Receptacle |
|-------------------|-----------------|----------|------------|
| screw termination | yes | 10530000 | 10531000 |
| screw termination | no | 10532000 | 10533000 |

Compatible housing

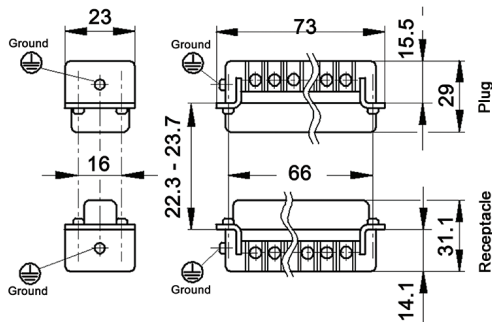
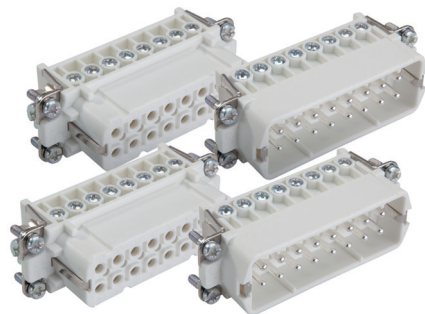
HA 16
page 417

Approvals

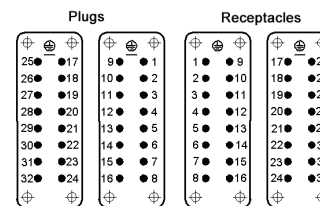


EPIC® HA 32

screw termination: 600V, 14A



all dimensions are in mm



view from cable side

| Termination | Wire protection | Contact numbering | Plug | Receptacle |
|-------------------|-----------------|-----------------------|----------------------|----------------------|
| screw termination | yes | # 1 - 16 # 17 - 32 | 10530000 10540000 | 10531000 10541000 |
| screw termination | no | # 1 - 16 # 17 - 32 | 10532000 10542000 | 10533000 10543000 |

Compatible housing

HA 32
page 419

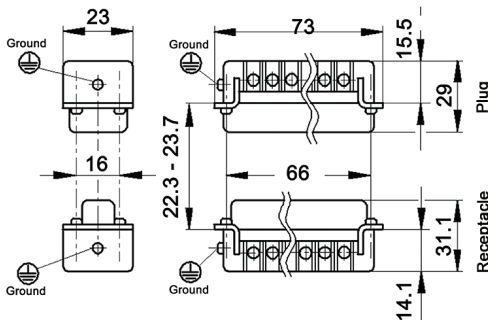
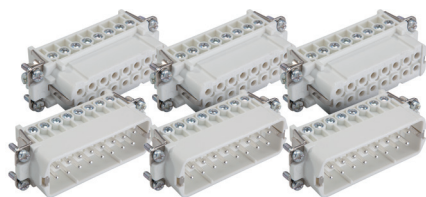
Approvals



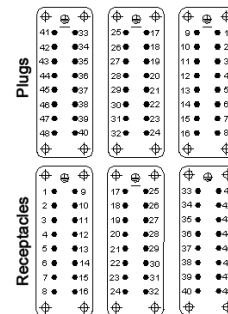
If not otherwise specified, all values relating to the product are nominal values. Photographs are not to scale and are not true representations of the products in question.

EPIC® HA 48

screw termination: 600V, 14A



all dimensions are in mm



view from cable side

| Termination | Wire protection | Contact numbering | Plug | Receptacle |
|-------------------|-----------------|-------------------|----------|------------|
| screw termination | yes | # 1 - 16 | 10530000 | 10531000 |
| | | # 17 - 32 | 10540000 | 10541000 |
| | | #33 - 48 | 10540100 | 10541100 |
| screw termination | no | # 1 - 16 | 10532000 | 10533000 |
| | | # 17 - 32 | 10542000 | 10543000 |
| | | #33 - 48 | 10542100 | 10543100 |

Compatible housing

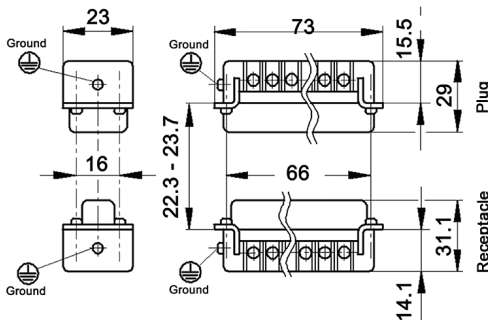
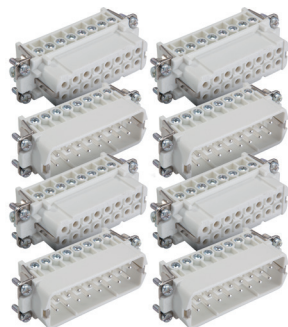
HA 48
page 421

Approvals

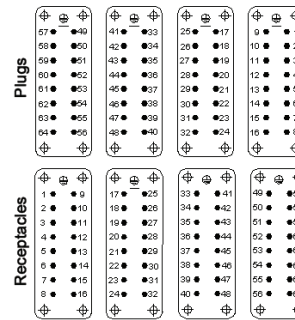


EPIC® HA 64

screw termination: 600V, 14A



all dimensions are in mm



view from cable side

| Termination | Wire protection | Contact numbering | Plug | Receptacle |
|-------------------|-----------------|-------------------|------------|------------|
| screw termination | yes | # 1 - 16 | 10530000 | 10531000 |
| | | # 17 - 32 | 10540000 | 10541000 |
| | | #33 - 48 | 10540100 | 10541100 |
| | | #49 - 64 | 105300LE64 | 105310LE64 |

Compatible housing

HA 64
page 422

Approvals



If not otherwise specified, all values relating to the product are nominal values. Photographs are not to scale and are not true representations of the products in question.