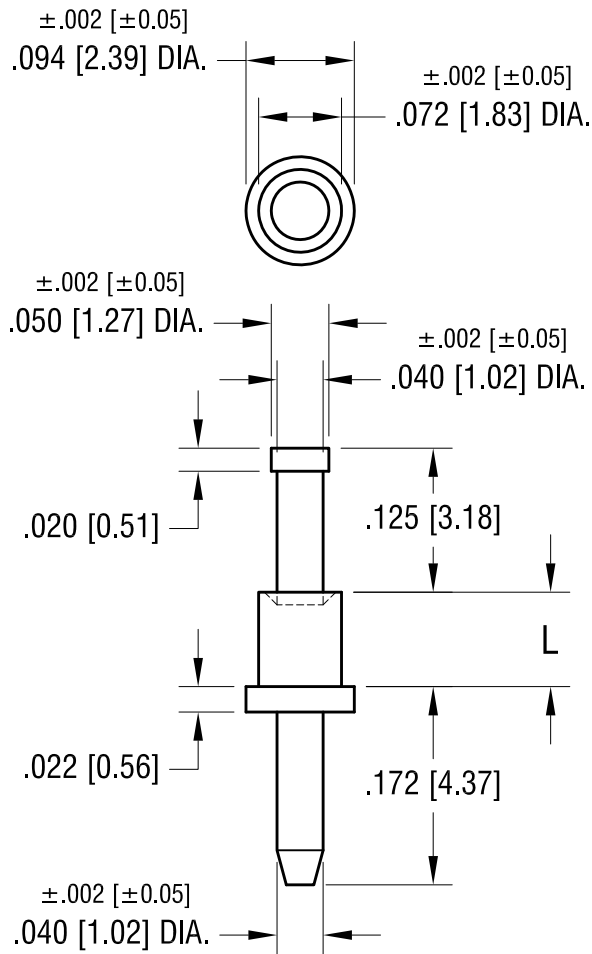


THIS DOCUMENT IS THE PROPERTY OF  
KEYSTONE ELECTRONICS CORP. AND  
SHALL NOT BE REPRODUCED, DISTRIBUTED  
OR USED AS A BASIS FOR MANUFACTURE  
WITHOUT PRIOR WRITTEN PERMISSION  
FROM KEYSTONE ELECTRONICS CORP.

**ACTUAL SIZE**



P/N 1356-2



| PART NO. | 'L' DIM.    |
|----------|-------------|
| 1356-1   | .051 [1.30] |
| 1356-2   | .082 [2.08] |
| 1356-3   | .113 [2.87] |

NOTE:  
1. MOUNTING HOLE .076 [1.93] DIA.

|  |                 |        |              |
|--|-----------------|--------|--------------|
| <b>KEYSTONE ELECTRONICS CORP.</b>                              |                 |        |              |
| www.keyelco.com • NEW HYDE PARK, NY 11040 • Tel (516) 328-7500 |                 |        |              |
| PART NAME  |                 |        |              |
| MICRO PIN, SWAGE MOUNT   |                 |        |              |
| MATERIAL   |                 |        |              |
| BRASS  |                 |        |              |
| FINISH   |                 | DRN BY | DATE         |
| GOLD PLATE   |                 | BOONE  | 2.22.07      |
|  |                 | APP'D  | SCALE        |
|  |                 | LN     | 6X           |
| TOLERANCES   | INCH [MM]       | CODE   | DWG NO.      |
| DECIMAL  | ± .005 [± 0.13] | C      | <b>1356-</b> |
| ANGULAR  | ± 1°            |        |              |
| UNLESS OTHERWISE SPECIFIED                                     |                 |        |              |

| DATE | DESCRIPTION | REV. |
|------|-------------|------|
|      |             |      |