



6-18GHz 2-way Wilkinson Power Divider

PDW06011



DLI • Novacap • Syfer • Voltronics

www.dilabs.com

www.knowlesc capacitors.com

DESCRIPTION

DLI's 6-18GHz 2-way power divider / combiner offers unmatched size and performance in a wirebond configuration. This power divider utilizes DLI's low loss temperature stable materials which offer small size and minimal performance variation over temperature.

FEATURES

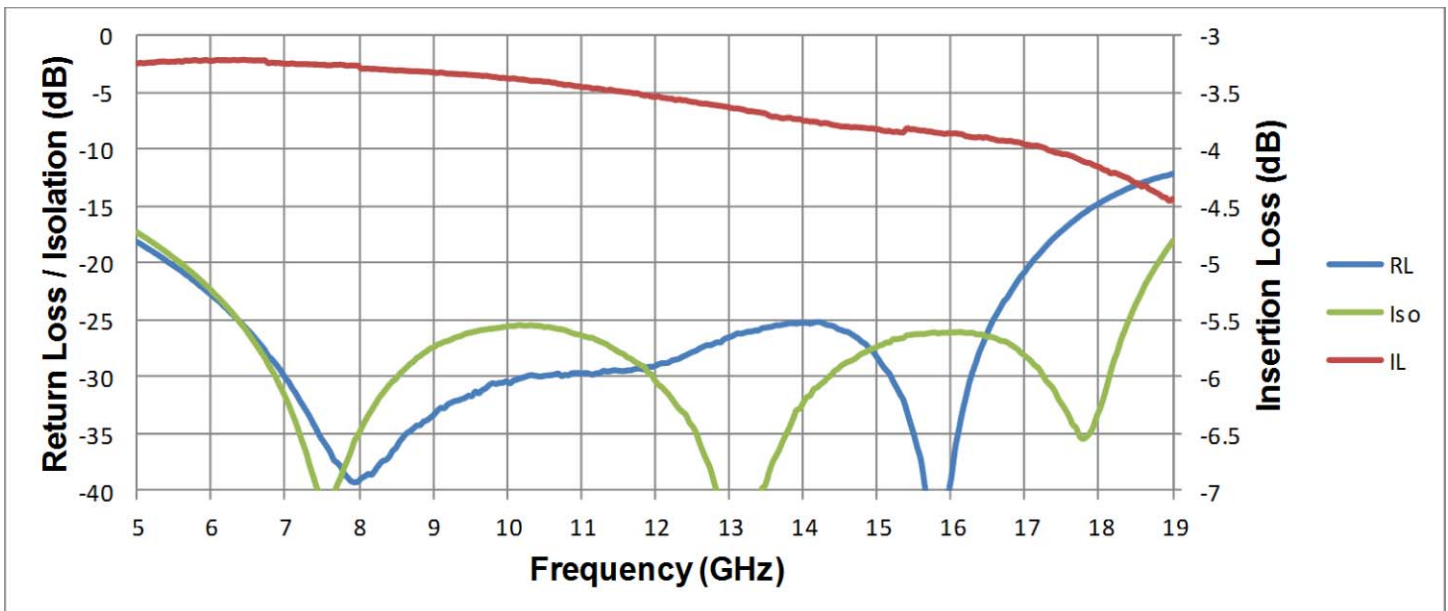
- Small Size
- Broadband 6 to 18GHz Performance
- Frequency Stable over Temperature
- Wirebond Package
- Excellent Repeatability
- Operating Temp: -55°C to +125°C
- Characteristic Impedance: 50Ω

SPECIFICATIONS*

Parameter	Frequency Range (GHz)	Min	Typ.	Max	
Nominal Power Splitting (dB)	6 - 18		3.0		
Nominal Phase Shift (Deg)			0.0		
Amplitude Balance (dB)					± 0.035
Phase Balance (Deg)					± 3.0
Excess Insertion Loss (dB)					1.2
Return Loss (dB)				15	
Isolation (dB)				25	
Power (W)					5

*Electrical specifications based on typical mounted performance at room temperature. Insertion loss shall vary ±0.5dB over temperature.

Typical Measured Performance





6-18GHz 2-way Wilkinson Power Divider

PDW06011

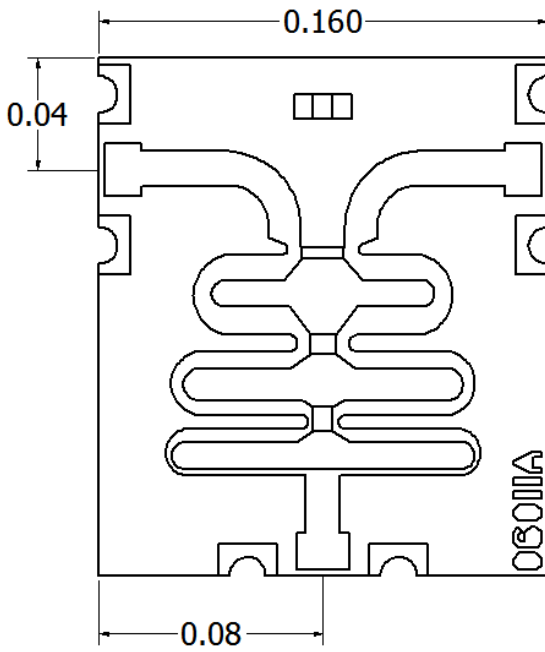


DLI • Novacap • Syfer • Voltronics

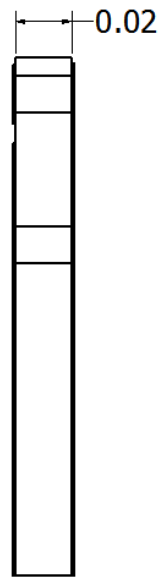
www.dilabs.com

www.knowlescapacitors.com

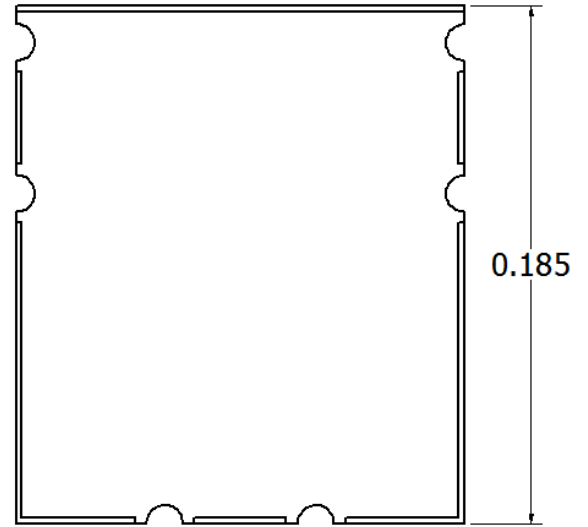
Physical Dimensions



Top



Side



Bottom

