

# **Xilinx Design Tools: Installation and Licensing Guide**

## ***Vivado Design Suite and ISE Design Suite***

UG798 (v2012.2, v14.2) July 25, 2012



#### Notice of Disclaimer

The information disclosed to you hereunder (the "Materials") is provided solely for the selection and use of Xilinx products. To the maximum extent permitted by applicable law: (1) Materials are made available "AS IS" and with all faults, Xilinx hereby DISCLAIMS ALL WARRANTIES AND CONDITIONS, EXPRESS, IMPLIED, OR STATUTORY, INCLUDING BUT NOT LIMITED TO WARRANTIES OF MERCHANTABILITY, NON-INFRINGEMENT, OR FITNESS FOR ANY PARTICULAR PURPOSE; and (2) Xilinx shall not be liable (whether in contract or tort, including negligence, or under any other theory of liability) for any loss or damage of any kind or nature related to, arising under, or in connection with, the Materials (including your use of the Materials), including for any direct, indirect, special, incidental, or consequential loss or damage (including loss of data, profits, goodwill, or any type of loss or damage suffered as a result of any action brought by a third party) even if such damage or loss was reasonably foreseeable or Xilinx had been advised of the possibility of the same. Xilinx assumes no obligation to correct any errors contained in the Materials or to notify you of updates to the Materials or to product specifications. You may not reproduce, modify, distribute, or publicly display the Materials without prior written consent. Certain products are subject to the terms and conditions of the Limited Warranties which can be viewed at <http://www.xilinx.com/warranty.htm>; IP cores may be subject to warranty and support terms contained in a license issued to you by Xilinx. Xilinx products are not designed or intended to be fail-safe or for use in any application requiring fail-safe performance; you assume sole risk and liability for use of Xilinx products in Critical Applications: <http://www.xilinx.com/warranty.htm#critapps>.

© Copyright 2012 Xilinx, Inc. Xilinx, the Xilinx logo, Artix, ISE, Kintex, Spartan, Virtex, Vivado, Zynq, and other designated brands included herein are trademarks of Xilinx in the United States and other countries. All other trademarks are the property of their respective owners.

---

## Revision History

The following table shows the revision history for this document.

Date	Version	Revision
07/25/2012	2012.2/14.2	Initial Vivado Design Suite release./ISE Design Suite device and software updates.
05/08/12	14.1	Initial Xilinx release.

# Table of Contents

## Chapter 1: Download and Installation

Downloading the Xilinx Design Tools . . . . .	4
Installing the Xilinx Design Tools: Overview for All Platforms . . . . .	5
Platform-Specific Installation Instructions . . . . .	6
Installation Flow . . . . .	6
USB FLEXid Dongle Driver Installation . . . . .	10
Network Installations . . . . .	11
Obtaining Quarterly Releases . . . . .	13
Uninstalling the Xilinx Design Tools . . . . .	15

## Chapter 2: Obtaining and Managing a License

Accessing the Product Licensing Site . . . . .	16
Changing Xilinx User Account Information . . . . .	17
Product Licensing Accounts . . . . .	19
User Types and Actions . . . . .	20
Creating a License Key File . . . . .	21
Managing License Key Files . . . . .	28
Legacy Licensing . . . . .	32
Understanding Your Tool and IP Orders . . . . .	34
Managing User Access to Product Licensing Account . . . . .	35
Installing Your License Key File . . . . .	36

# Download and Installation

This guide explains how to install and license the Xilinx® Design Tools, which includes the Vivado Design Suite, Integrated Software Environment (ISE®) design tools, ChipScope™ Pro logic analyzer, Embedded Tools (including Embedded Development Kit (EDK) and standalone Software Development Kit (SDK)), System Generator for DSP, PlanAhead™ design tools, and Xilinx Documentation Navigator.

For information on what is new, known issues, and technical support for the Xilinx Design Tools, see the [Xilinx Design Tools: Release Notes Guide \(UG631\)](#).

This chapter describes how to download and install the Xilinx Design Tools.

---

## Downloading the Xilinx Design Tools

This section explains how to download the Xilinx Design Tools.

To begin, open an internet browser and navigate to <http://www.xilinx.com/support/download/index.htm>.

Most files in the Xilinx Download Center are downloaded using the Akamai download manager. For the optimum download experience:

- Allow pop-ups from entitlenow.com
- Set security settings to allow for secure and non-secure items to be displayed on the same page
- Allow the Akamai download manager to run Java processes

To download the Xilinx Design Tools:

1. Select the **Design Tools** tab in the web page.
2. Under the Version heading, click the version of the tools you want to download.
3. Click the link for the installer you want to download.

**Note:** For 14.x, the installers under the Xilinx Design Tools heading also contain the standalone selections for the Software Development Kit and Lab Tools. Depending on your use case, you may not need to download these separate installation programs if you are downloading the Xilinx Design Tools installers.

4. Enter your User ID and Password to log into your Xilinx account.

**Note:** If you do not have a Xilinx account, you must create one in order to download products.

An address verification screen appears.

5. Once the current address is correct, click **Next**.
6. The Akamai download manager launches in your browser to complete the download process. If you have trouble using the Akamai download manager, look on the download page under "Having Trouble Downloading?". You can follow a link to a Xilinx Answer Record which will allow you to obtain the tools without using the download manager.

Most files in the Xilinx Download Center are packaged using TAR methods. You will need to use software from a third party provider to unpack them. Consult your IT department for assistance. Commonly used tools for TAR files are 7-ZIP, GNU built-in tools, WinZIP, and WinRAR. These tools are licensed solely by each respective developer, and not by Xilinx. Xilinx hereby disclaims any warranties, express or implied, including warranties of merchantability, fitness for a particular purpose, or non infringement with respect to these suggested software tools.

---

## Installing the Xilinx Design Tools: Overview for All Platforms

This section explains the installation process for all platforms for the Xilinx Design Tools. Before installation:

- Disable anti-virus software to reduce installation time.
- Make sure you have the necessary privileges for the system on which the design tools will be installed. Some components, such as programming cable device drivers, require administrator-level permissions.
- Close all open programs before you begin installation.
- Make sure your system meets the requirements described in the [Xilinx Design Tools: Release Notes Guide \(UG631\)](#) "Architecture Support and Requirements" chapter.
- Check the links in [Xilinx Design Tools: Release Notes Guide \(UG631\)](#) "Important Xilinx Design Tools Release Information" chapter for any installation issues pertaining to your system or configuration.
- If EDK is installed, make sure the installation is in a directory structure that does not contain spaces.

**Note:** The Xilinx Design Tools installers do not set global environment variables, such as XILINX, on Windows. To find out if this affects the way you run Xilinx design tools, see "[Platform-Specific Installation Instructions](#)."

---

## Platform-Specific Installation Instructions

This section provides platform-specific instructions for installing the Xilinx Design Tools.

### Microsoft Windows Installation

How you start installation depends on how you obtained the installation program. See [Downloading the Xilinx Design Tools](#) for details on your options.

- If you downloaded an installation file, decompress that file and run **xsetup.exe**.
- If you received a Xilinx Design Tools DVD, load the DVD. If the auto-run feature of your DVD drive is enabled, the setup program should start automatically. If it does not, browse to the DVD in Windows Explorer and run **xsetup.exe**.

### Linux Installation

The method of starting the installation depends on how you have obtained the installation program. See [Downloading the Xilinx Design Tools](#) for details on your options.

- If you have downloaded an installation file, decompress that file and run the **xsetup** program contained therein.
- If you have ordered and received a Xilinx Design Tools DVD, load the DVD. Click the setup file in your file manager, or browse to the root of your DVD drive and type **./xsetup**.

---

## Installation Flow

The following section describes important screens you will encounter during the installation process.

**Note:** For each of the following installation steps, click on the text of any item with a check box next to it to obtain more information. Information is displayed in the "Description" area near the bottom of the screen.

### Accepting Software Licenses

You must accept two software license agreements. On each Accept Software Agreement screen:

1. Click **I accept and agree to the terms and conditions above**.
2. Click **Next**.

## Select Xilinx Products to Install

Select the Xilinx products you want to install.

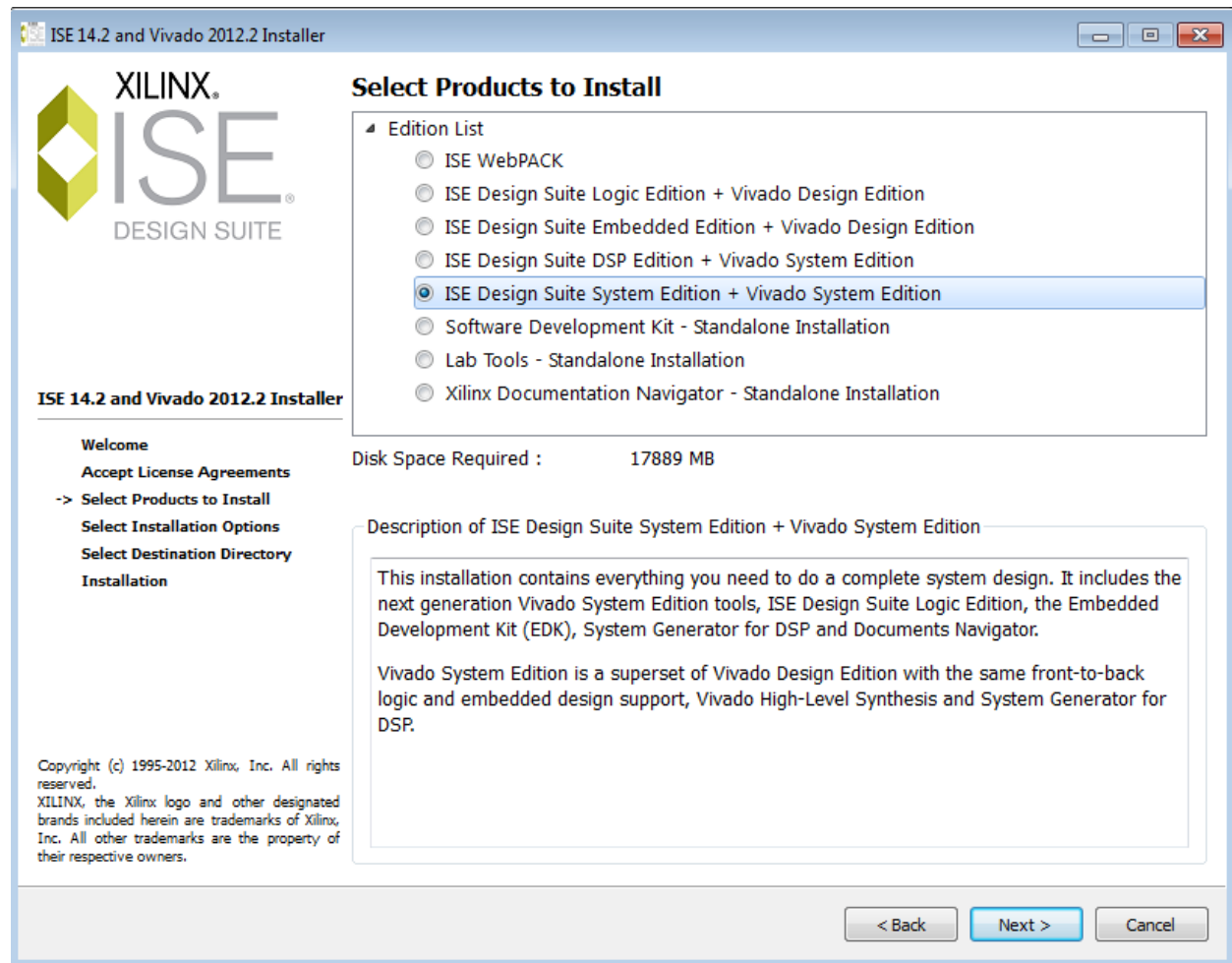


Figure 1-1: ISE Design Suite Installation - Select Xilinx Products Screen

**Note:** The ISE WebPACK tool product installer installs both ChipScope PRO analyzer and the Embedded Development Kit. Although installed, these applications will require a separate license to run.

## Select Installation Options

There are several optional installation steps during installation. If selected, these options install toward the end of the installation process, after the main installation has completed.

Select Xilinx Installation Options from the following screen.

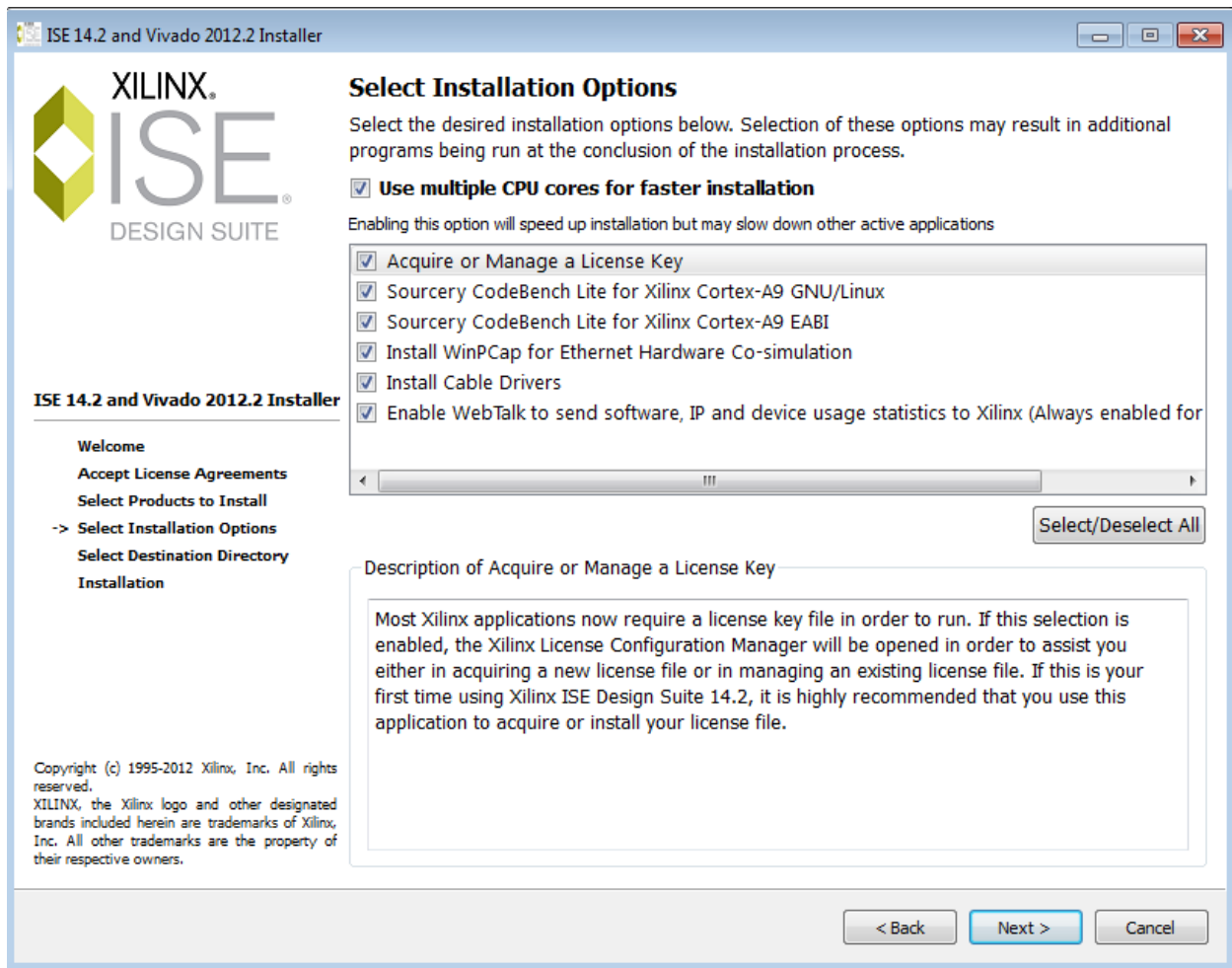


Figure 1-2: Xilinx Design Tools Installation - Xilinx Modules and Devices

**Note:** WebTalk is always enabled when using the WebPACK™ tool. If you install an Edition product, the installer allows you to deselect Enable WebTalk. However, if a WebPACK tool license is used to process the design, Enable WebTalk is ignored. Please click on the Enable WebTalk item, in the installer, and read the description box for full details.

## Select Destination Directory

In the Select Destination Directory screen, select the directory in which to install the design tools. Enter a name for the Program Folders list. The installer displays a level of hierarchy underneath the installation path you specify. The name of the directory varies depending on the type of product you are installing. Any Editors or WebPACK tool installation creates a directory named \ISE\_DS. Lab tool standalone installations create \LabTools. SDK standalone installations create \SDK. This ensures Edition and Standalone tools can coexist properly on your hard drive.



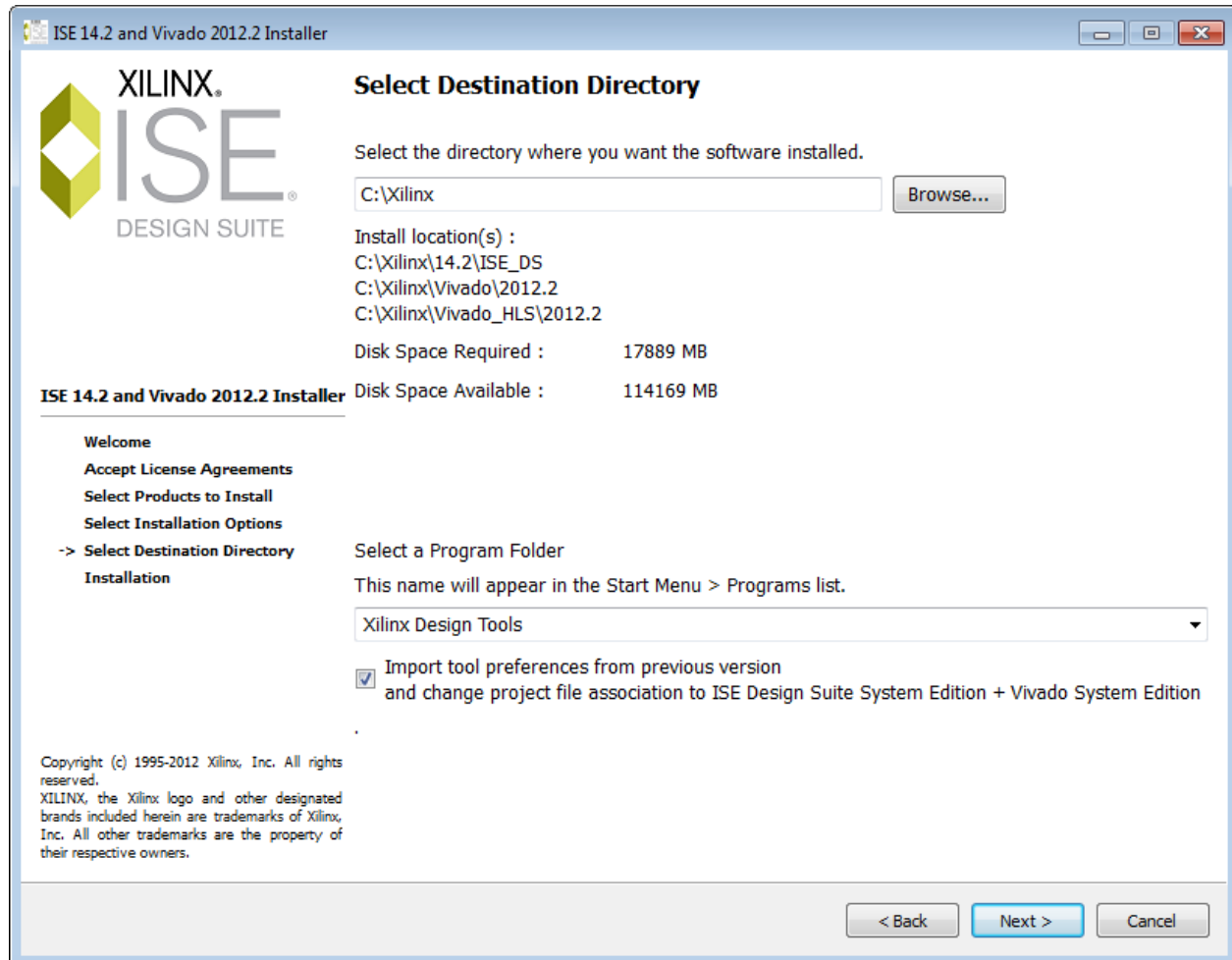


Figure 1-3: Xilinx Design Tools Installation - Select Destination Directory

## Installation Options Summary

The Installation Options Summary screen summarizes the tools, products, and options to be installed. To begin installation, click **Install**.

Near the end of the installation, the Xilinx License Configuration Manager opens by default. Follow the instructions in the Manager to obtain or locate a license file.

**Note:** EDK tools require the Cygwin tools distributed by RedHat. A copy of these tools is distributed with the EDK installation.

## Setting Environment Variables

### Microsoft Windows Clients

When installation is complete, the installation program creates an environment variable batch file. All appropriate Desktop and Program Group shortcuts call this file before launching the target application. A shortcut to a command-line prompt which sets the environment has been created. The shortcut is located at **Xilinx Design Tools > ISE Design Suite 14.2 > Accessories > ISE Design Suite 32 (or 64) Bit Command Prompt**.

To set environment variables in make or script files:

Add `<XILINX installation directory>\settings32.bat` or `settings64.bat` to your script. The numbers 32 or 64 corresponds to the bit-width of the operating system installed on the computer.

### Linux Clients

When installation is complete, the installation program creates an environment variables file.

1. Go to the XILINX installation directory.
2. Type either `source settings32.(c)sh` or `source settings64.(c)sh`, as required for your shell.

**Note:** 32-bit ISE tools do not work with 64-bit EDK. 64-bit EDK does not work with 32-bit ISE tools.

To set your environment variables manually or from within your setup script, Xilinx recommends you copy the settings from the appropriate file for your operating system, as listed above. Xilinx environment variables settings are specific to each operating system platform.

---

## USB FLEXid Dongle Driver Installation

If you purchased a USB FLEX ID Dongle for use with the Windows operating systems, you must install the appropriate driver before creating a FLEXnet license for use with it.

1. Install the Xilinx Design Tools first. This installation contains the installer files for the USB FLEXid dongle driver.
2. Run **FLEXid\_Dongle\_Driver\_Installer.exe** from `<Xilinx Installation Directory>\14.2\ISE_DS\ISE\bin\nt`.
3. On the Select Options screen, be sure only **FLEXid 9 Drivers** is checked.

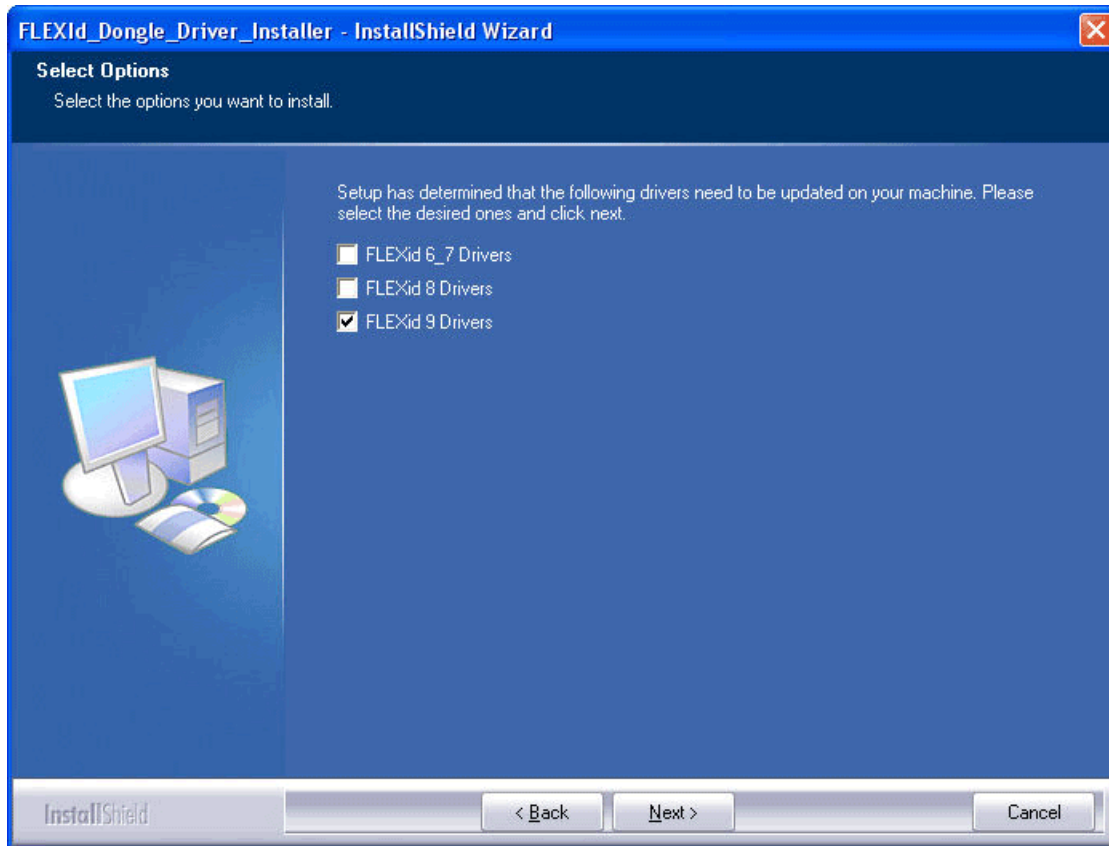


Figure 1-4: Select Options Screen

4. Click **Next** twice. The driver installs.

After installation, you will need to reboot to ensure the dongle operates correctly.

---

## Network Installations

Installing to a network location provides a way for client machines to access the design tools by pointing to it on the network drive. To run the design tools on the network, the client machines must be set up correctly to ensure the environment variables, registry, and program groups all point to the network. The following sections describe the procedure for network setups.

### Linux Clients

Each user must source **settings32.(c)sh** or **settings64.(c)sh** (whichever is appropriate for your operating system) from the \$XILINX area in which the design tools are installed. This points the Xilinx environment variable, path, and LD\_LIBRARY\_PATH to the installed location.

To run the design tools from a remotely installed location, run an X Windows display manager, and include a DISPLAY environment variable. Define DISPLAY as the name of your display. DISPLAY is typically unix:0.0. For example, the following syntax allows you to run the tools on the host named `bigben` and to display the graphics on the local monitor of the machine called `mynode`:

```
setenv DISPLAY mynode:0.0
xhost = bigbenPC Clients
```

## Microsoft Windows Clients

1. Install design tools to a PC network server. Make sure your users know the location of the design tools and have access to the installation directory, and they have Administrator privileges for the following steps.
2. From the local client machine, browse to the following directory: `network_install_location\common\bin\nt` and run the program **shortcutSetup.bat**.
3. Running this program sets up the Windows settings batch files and Program Group or Desktop shortcuts to run the Xilinx tools from the remote location.
4. From the client machine, launch the ISE tools by clicking the **Program Group** or **Desktop** shortcuts, or by running the applications on the network drive.

## Installing to a Mounted Network Drive

Xilinx design tools are designed to be installed in a directory under ROOT (typically C:\Xilinx). The installer normally presents this option when installing to a local driver. When installing to a mounted network drive, if a subdirectory is not defined, it appears to the Installer as if it is installing to a ROOT directory.

To work around this issue, define your target installation directory as "\Xilinx" under the network mount point (For example: "N:\Xilinx").

Windows 7 default security levels won't allow you to select remote mapped drives as an Administrator. In order to install Xilinx Design Tools on remote mapped drives, you need to change your account control settings using the steps below:

1. Open the Windows Control Panel, from the Windows Start menu, and select 'User Accounts'. If your Control Panel Uses 'Category View', you will need to click 'User Accounts' on two successive screens
2. Click on 'Change User Account Control settings' and allow the program to make changes
3. Click and slider the slider-bar down to the second to lowest setting (as seen in the below figure). Click OK.

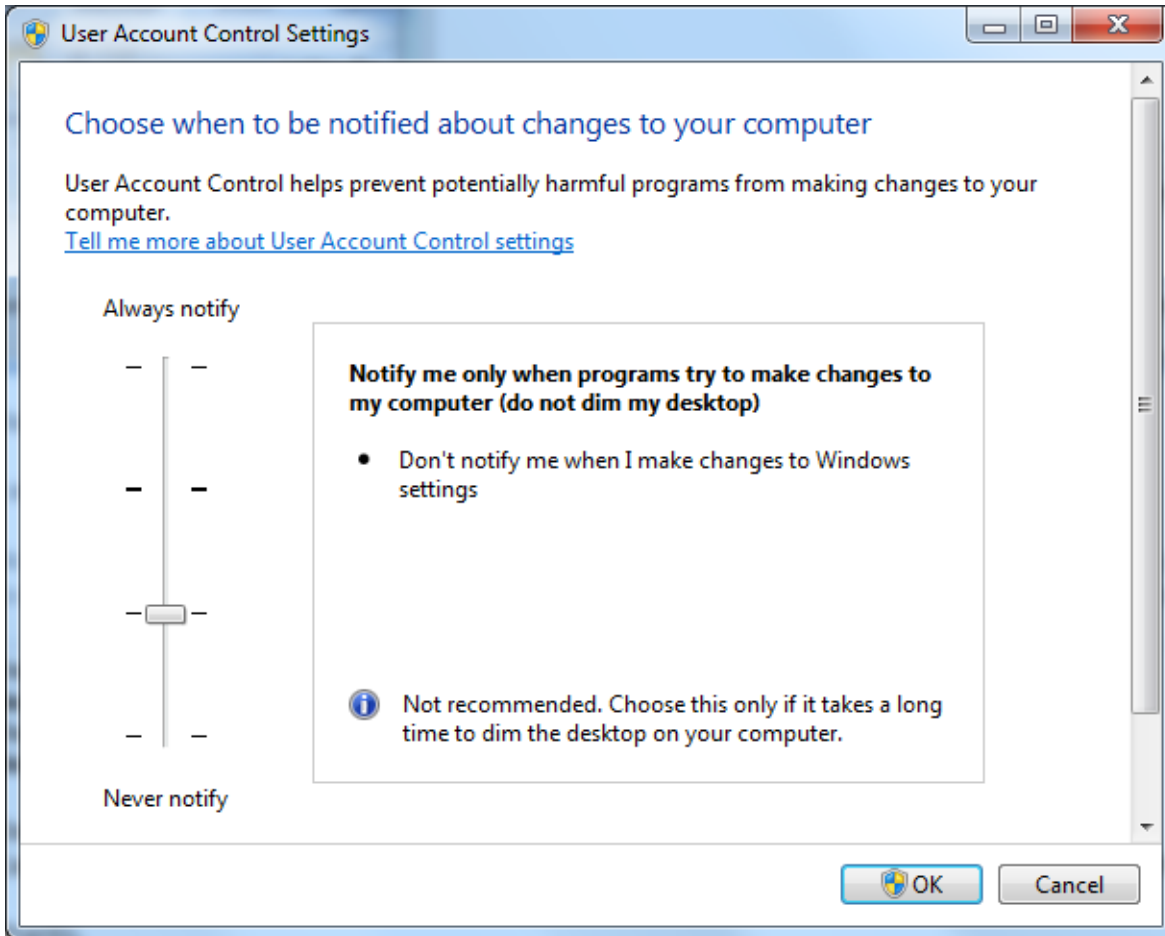


Figure 1-5: User Account Control Settings

Xilinx recommends you revisit this procedure to restore your settings to their previous state after installation.

NOTE: You will not be able to browse to remote mapped drives using the Xilinx installer. You will need to manually type in your installation path which contains a mapped network drive.

---

## Obtaining Quarterly Releases

Xilinx releases quarterly versions of the Xilinx Design Tools throughout the year. Each quarterly version contains device support updates, new features and bug fixes. The following sections describe how to obtain updates through XilinxNotify and the Download Center.

## XilinxNotify

The XilinxNotify tool is the preferred method of obtaining updates. It provides the following features:

- Compares the latest version of Xilinx design tools updates available on <http://www.xilinx.com/support> with what you have installed, and notifies you if a newer version is available.
- Provides a Download button allowing you to log in to the Xilinx Download Center. Once you log in, the download of your selected product begins.
- XilinxNotify can be run in any of the following ways:
  - Automatic periodic checks at ISE Project Navigator and Vivado startup time.
  - Select **Help > Check for Updates** from Project Navigator.
  - Select **Start > All Programs > Xilinx Design Tools > ISE Design Tools 14.2 > Accessories > Check for Updates**.
  - Type `xilinxnotify` in a Linux shell.

**Note:** Select **Edit > Preferences** in Project Navigator to control the frequency of the automatic periodic checks.

## XilinxNotify Network Installations

By default, the Automatically check for updates option at Project Navigator startup is enabled on the machine used to install the ISE tools to the network location. All clients pointing to this network location have this option disabled by default. Client users have the option of enabling this option (**Edit > Preferences > XilinxNotify** from Project Navigator) and also running manual checks.

**Note:** To perform an update installation, you must have write permissions for the \$XILINX installation directory.

## Download Center

Quarterly releases for all platforms are regularly made available on the Download Center at:

<http://www.xilinx.com/support/download/index.htm>

---

# Uninstalling the Xilinx Design Tools

## Uninstalling on Microsoft Windows

The following sections describe how to uninstall the Xilinx Design Tools products on Microsoft Windows.

To uninstall any Xilinx product, select the **Uninstall** item from that product's Start Menu folder. For instance, to uninstall the ISE WebPACK design tools or an ISE Design Suite: Edition, select **Start > All Programs > Xilinx Design Tools > ISE Design Suite 14.2 > Accessories > Uninstall**.

Depending on what you have installed, you may also need to uninstall some ancillary applications, such as WinPcap 4.0 (optional component of DSP Tools).

Before uninstalling, make sure you have moved any project files you want to keep outside your Xilinx installation directory structure, or they will be deleted.

## Uninstalling on Linux

To uninstall the Xilinx Design Suite product, you need to remove the Xilinx installation directory from the shell.

# Obtaining and Managing a License

The Xilinx® Product Licensing Site is an online service for licensing and administering evaluation and full copies of Xilinx design tools and IP products. This chapter describes the FLEXnet license generation functionality of the Product Licensing Site.

For information on the licensing of Vivado Design and the generation of ISE® and Vivado Edition licenses, see the [Xilinx Design Tools: Release Notes Guide \(UG631\)](#).

## Accessing the Product Licensing Site

You can access the Xilinx Product Licensing Site in various ways depending upon the type of license being generated.

- If you purchased products, follow the link included in your order confirmation email. It will provide direct access to an account containing your product entitlements.
- To evaluate the ISE® Design Suite products, go to [http://www.xilinx.com/ise\\_eval](http://www.xilinx.com/ise_eval).
- To evaluate IP products, go to <http://www.xilinx.com/ipcenter> and follow the Evaluate link on the IP product page of interest.
- To access the Product Licensing Site directly, go to <http://www.xilinx.com/getlicense>. You must first register or enter your registration information.

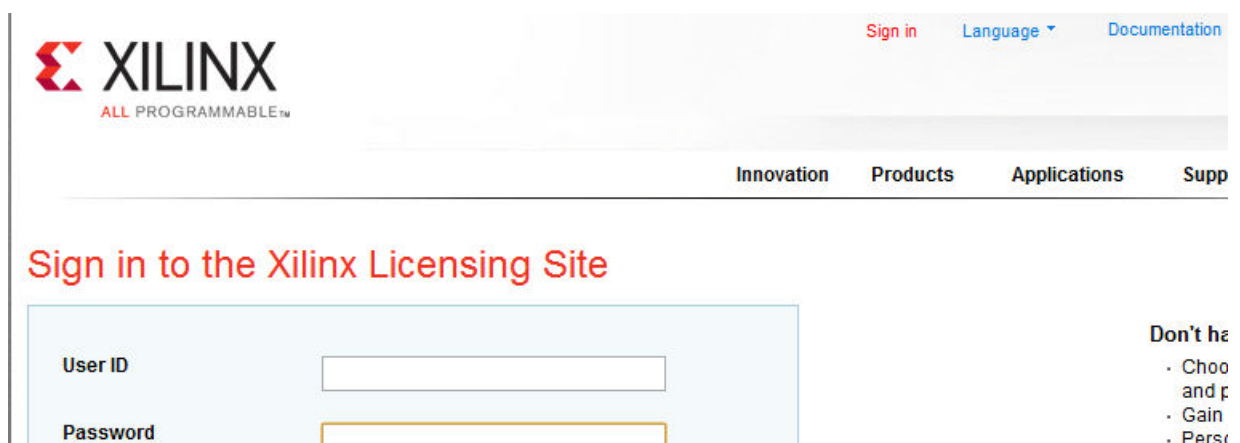


Figure 2-1: Xilinx Licensing Sign In Page



You must first sign in. If you already have a Xilinx user account, enter your user ID and password, and then confirm your contact information is current. If you do not have an account, click the **Create Account** button.

## Changing Xilinx User Account Information

It is important to keep your Xilinx User Account up to date. As you change companies, addresses or emails may change.

### Modifying your Corporate Email Address

1. Go to [www.xilinx.com](http://www.xilinx.com).



Figure 2-2: Xilinx Website

2. Click **Sign In**.

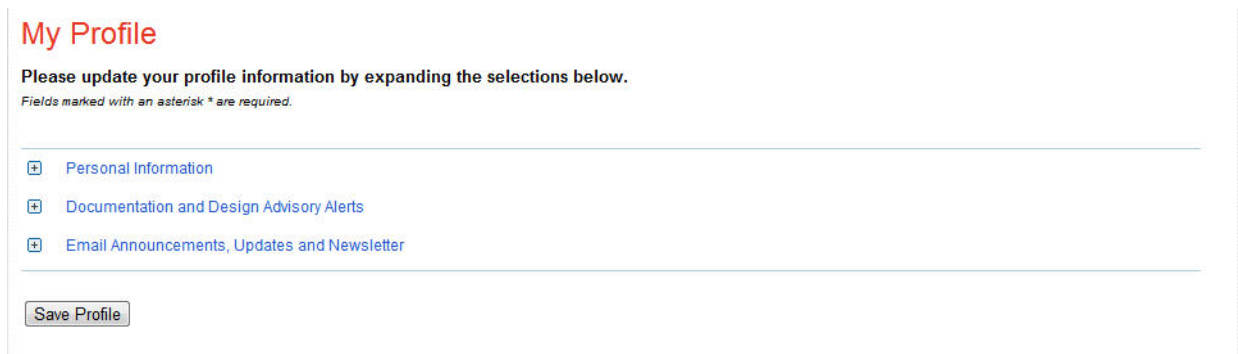


Figure 2-3: Personal Information

3. Expand **Personal Information**.

## My Profile

Please update your profile information by expanding the selections below.

*Fields marked with an asterisk \* are required.*

Personal Information

First Name *	<input type="text" value="Test"/>
Last Name *	<input type="text" value="Xilinx"/>
Corporate Email	<input type="text" value="omsxilinx.test@gmail.com"/>
<i>To change your email address please enter the new address in the field below and select Save Profile. Follow the instructions in the email you receive from us to confirm the change.</i>	
Enter new Corporate email address	<input type="text"/>
<a href="#">Change password</a>	
Company/Organization	<input type="text" value="xilinx oms"/>
Address 1	<input type="text" value="3100 Logic Dr"/>
Address 2	<input type="text"/>
City	<input type="text" value="Longmont"/>
State/Province	<input type="text" value="CO"/>
Postal/Zip Code	<input type="text" value="80503"/>
Country	<input type="text" value="United States"/> ▼
Phone (include area code)	<input type="text" value="7206523211"/>
Fax (include area code)	<input type="text"/>
Preferred Language	<input type="text" value="English"/> ▼
Job Function	<input type="text" value="Other"/> ▼
Industry *	<input type="text" value="Other"/> ▼

[Documentation and Design Advisory Alerts](#)

[Email Announcements, Updates and Newsletter](#)

Figure 2-4: Enter New Corporate email Address

4. Enter your new corporate email address in the **Enter new Corporate email address** box.
5. Click **Save Profile** button for changes to take effect.

---

## Product Licensing Accounts

When you purchase a design tool edition or IP product from Xilinx, you are purchasing a license to use and receive updates for that product for one year. The license to use Xilinx design tools and IP products is managed through the use of product entitlements. A product entitlement is the determination of:

- Which product was purchased
- The number of seats purchased
- The license type (floating or node-locked)
- The product subscription period (product updates are provided throughout the year)

In addition to managing the product entitlements for your purchased design tools and IP, you can also access product entitlements for No Charge or Evaluation products. Full and No Charge licenses have a subscription period of one year. Design tools evaluations are for 30 days, and IP evaluations are for 120 days.

Activating a product entitlement results in one or more license keys being generated by the website. When installed, the license keys enable the use of the design tools and IP that were purchased or are being evaluated. Your product entitlements and resulting license key files are managed in a product licensing account on the Xilinx website.

Product licensing accounts are specific to the individual listed on the Xilinx Software Purchase Order, who is either the end user or administrator of the design tools. All purchases made can be managed in the same product licensing account if a single administrator is named. A company site can have multiple accounts managed by different administrators. The latter is helpful if a site has multiple design teams working on differing projects with different budget pools.

**Note:** A license key can be generated for a product entitlement that has expired; however, it will only enable product releases up to the subscription end date. Applying a product update made available after the subscription end date of your license results in an error.

### LogiCORE™ IP License Generation in the Xilinx Design Tools

Any IP and design tools entitlements you have purchased appear in your list of entitled products when you log into the Product Licensing Site. Licenses for Evaluation and No Charge IP are available on the site in a separate area. Licenses for all your design tools and IP can now be generated in one pass. They are emailed to you in a single license file. IP core FLEXnet licenses now feature more licensing options, such as single or Triple-Redundant Floating Server support, and more host options for node-locked license keys: Ethernet MAC address, Hard Drive Serial Number or USB Dongle ID.

---

## User Types and Actions

There are three user types for the Product Licensing Site: customer account administrator, end user, and evaluation user.

### Customer Account Administrator

An example of a typical customer account administrator is a CAD tools manager. Every product licensing account *must* have at least one customer account administrator. A customer account administrator can manage more than one product licensing account.

The responsibilities as the customer account administrator include:

- Generating node-locked or floating licenses for Xilinx design tools and IP products.
- Adding and removing users from the product licensing account.
- Assigning administrative privileges to other users.
- Ordering product DVDs (if desired).

The original customer account administrator is the Ship To contact identified during the product ordering process. That person will receive an email with instructions on how to download and license each purchased product. The customer account administrator must follow the link in the email, to ensure access to the purchased products.

### End User

Adding end users to a product licensing account allows an engineer or design team member the flexibility to manage and generate license keys on their own. The end user may generate license keys for node-locked products entitlements within the account as well as evaluation and "no charge" license keys for design tools and IP products. A customer account administrator can also configure the end user account to allow an end user to generate floating licenses. An end user cannot:

- View or generate floating license keys by default. This privilege may be assigned to them by the customer account administrator.
- View the license keys generated by other users.
- Add or remove other users to or from the product licensing account.

### Evaluation User

Evaluation users can:

- Generate a 30-day free evaluation license key for the Xilinx Design Tools: System Edition
- Generate license keys for evaluation and no charge IP products
- Generate a WebPACK™ tool license for the Xilinx Design Tools
- Request a Xilinx Design Tools DVD with one of the following Shipping Options:
  - Free Shipping (2-4 Weeks)
  - Standard (2-3 Days)
  - Overnight

**Note:** A customer who is already licensed for a full version of a Xilinx Design Tools product edition can evaluate other Xilinx Design Tools product editions or IP. These product entitlements are made available in the same product licensing account.

All user types can download products electronically and request a Xilinx Design Tools DVD.

---

## Creating a License Key File

The Create New Licenses tab on the Product Licensing Site is the starting point for license key file generation. The design tools and IP product entitlements you have purchased or wish to evaluate are shown in the product entitlement table.

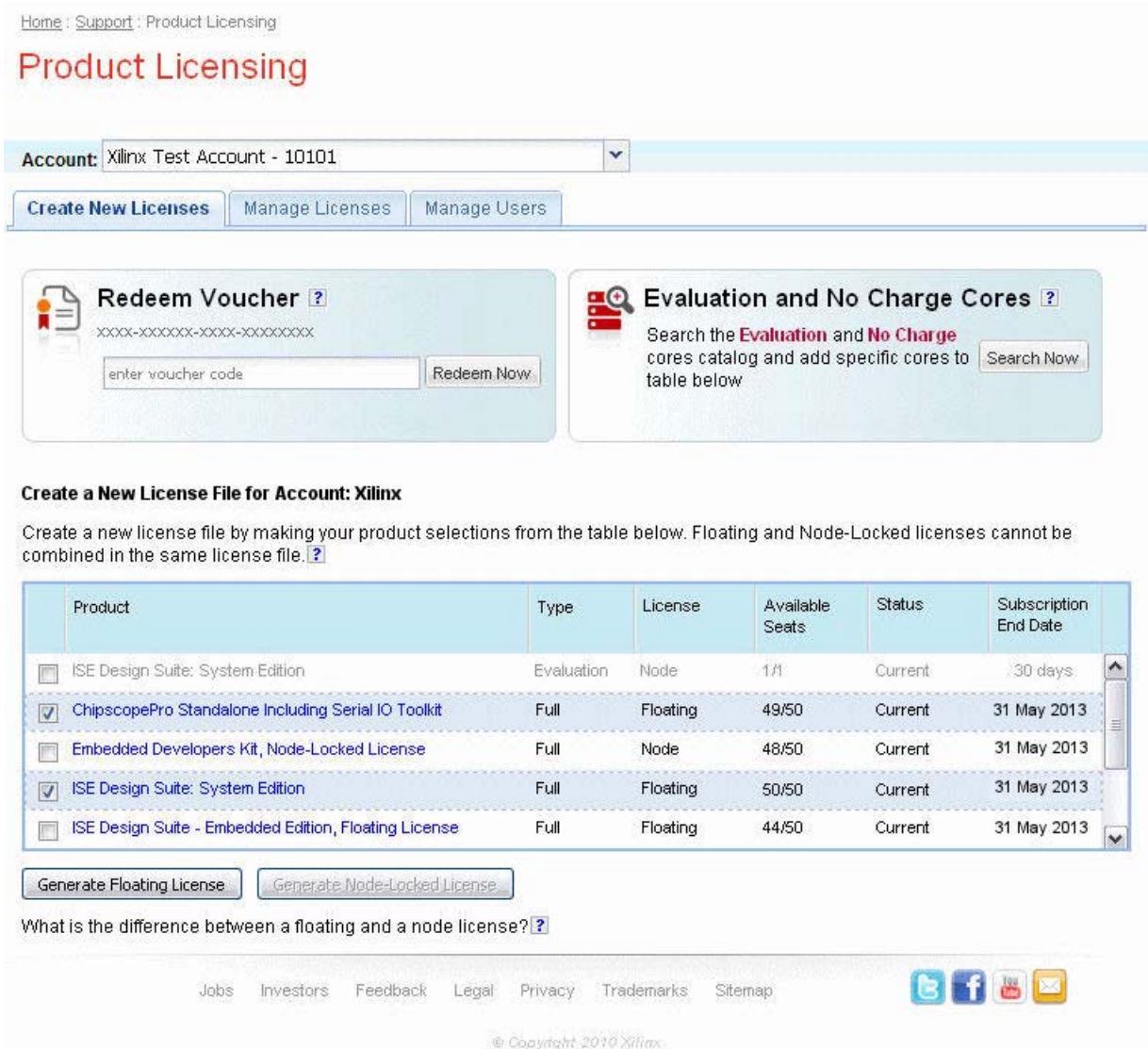


Figure 2-5: Create New License

## Selecting Products

To begin the license generation process for products you have purchased or want to evaluate:

1. Select a product licensing account from the Account drop-down list.
 

**Note:** This selection is not available if you are entitled to evaluation or free products only.
2. Enter product voucher codes for design tools or IP product licenses purchased with kits or for tools purchased from the Xilinx online store (optional).
3. Add evaluation or no-charge IP product entitlements to the product entitlement table (optional).

4. Make your product selections from the product entitlement table.

The type of product entitlements available are Full (purchased), No Charge, or Evaluation. Full and No Charge licenses have a subscription period of one year. Design tools evaluation is for 30 days. IP evaluations are for 120 days.

Floating and node-locked licenses cannot be combined in the same license key file.

**Note:** A floating license resides on a network server and enables applications to check out a license when they are invoked. At any one time, the number of licenses for simultaneous users is restricted to the number of license seats purchased. A node-locked license allows for the use of a single seat of a product entitlement on a specific machine.

For design tools, available seats represents the number of seats available for licensing over the total number of seats purchased. For IP, seats are managed according to the terms of the site wide license agreement.

Products with a status of Current are within their warranty period. Products with a status of Expired have a warranty period end date that has passed. If seats are available, licenses can be generated for either Current or Expired product entitlements.

The Xilinx Design Tools: System Edition evaluation product entitlement provides access to all the capabilities in the Xilinx Design Tools tool set. This product entitlement is automatically included in your product licensing account.

Product vouchers for design tools and IP product licenses may be shipped with a Xilinx or partner development board or design kit. If you have a product voucher card, you may enter the voucher code on the card into the associated text field and click Redeem Now. This places the corresponding design tools or IP product entitlement in the product entitlement table which you can use to generate a license key.

To add Evaluation and No Charge IP to the list of product entitlements, click the **Search Now** button in the Add Evaluation and No Charge IP Cores section of the page. This opens an IP product finder tool.

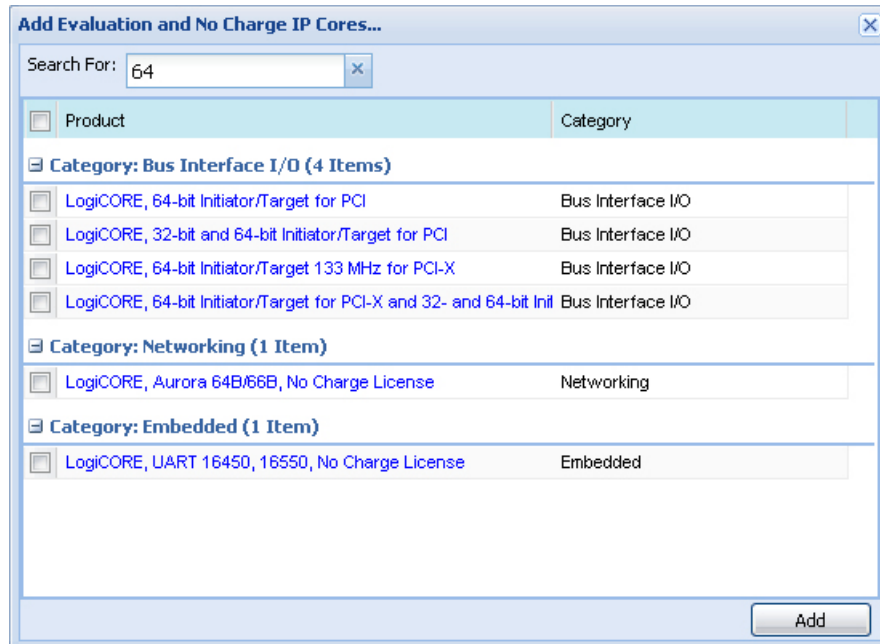


Figure 2-6: IP Product Selector

**Note:** IP products are typically sold as site licenses that gives the administrator the ability to generate license keys for floating and node-locked license types. End users see only product entitlements for node-locked products. The customer account administrator, or an End User who has been granted Floating License generation status by the administrator, sees product entitlements for both node-locked and floating products.

## Generating a License

Click the **Generate License** button corresponding to the type of license key file you are generating (floating or node-locked). The license generation form shown below appears.



**Generate Floating License**  
*Fields marked with an asterisk \* are required.*

**1 PRODUCT SELECTION**

Product Selections *	Product	Type	Available Seats	Subscription End Date	Requested Seats
<input checked="" type="checkbox"/>	ChipscopePro Standalone Including	Full	50/50	31 May 2013	50
<input checked="" type="checkbox"/>	ISE Design Suite: System Edition	Full	50/50	31 May 2013	50

**2 SYSTEM INFORMATION**

License: Floating

Redundancy [?](#)  Non-Redundant  Triple Redundant

Host ID [?](#)

**3 COMMENTS**

Comments [?](#)

Figure 2-7: Generate Floating License

To generate floating licenses:

1. Select the number of seats required for each product license.

This is for floating licenses only. All node-locked licenses are for one seat. The number of seats available for a product entitlement is automatically maintained by the system. The Requested Seats field is populated, by default, with the full number of seats remaining on the product entitlement. A product is removed from the product entitlement table if all seats have been activated.

2. Enter system information.

System information is pre-populated in the option menu if you arrived at the Product Licensing Site from a link within the Xilinx License Configuration Manager (XLCM).

A redundant server configuration provides a fail over for the license manager software. As long as two of the three servers are running, the license manager can continue to run.

If you do not have pre-populated system information, or if you want to add a different host, select the **Add a host** option.

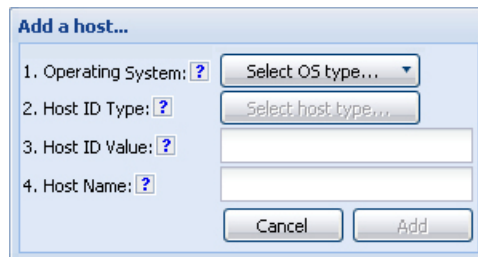


Figure 2-8: Add a Host

The host ID value uniquely identifies the machine to which your design tools or IP is licensed. You may choose a host ID type to be a MAC address, a hard drive serial number, a dongle ID, or a Solaris host ID.

**Note:** Not all host ID types are supported for all operating systems. The easiest way to obtain your host ID is to run the XLCM on the machine that will serve as the license host.

3. Add a comment.

Adding a comment to the license key file makes it easier for an administrator to track the allocation of design tools and IP product entitlements among users.

4. Click **Next**.

The Review License Request form opens.

**Generate Floating License**

**4 REVIEW LICENSE REQUEST**

Product Selections

Product	Subscription End Date	Available Seats	Requested Seats
ChipscopePro Standalone Including Serial IO Toolkit	2012-05-31	50/50	50
ISE Design Suite: System Edition	2012-05-31	50/50	50

System Information

License	Floating
Redundant Server	No
Host Name(s)	TestPC1
Host ID	132413241234

Previous Next Cancel

Figure 2-9: Review License Request

- Review your selections.
- If you are satisfied with your selections, click **Next**.

## End User License Agreements

Xilinx Design Tools and No Charge IP product End User License Agreements (EULAs) are agreed to during the product installation process. If you license IP products, you must accept the terms of the associated IP product EULAs before the license file can be generated.

## Third-Party Licenses

A complete copy of the third-party licenses is located at:  
 <install\_directory>/common/licenses/unified\_3rd\_party\_eula.txt

## License Generation Confirmation

When you finish generating the licenses, you will receive a confirmation message summarizing your licensing activity.

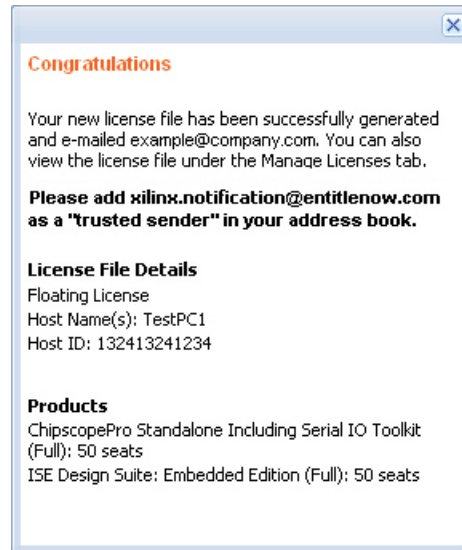


Figure 2-10: License Generation Confirmation

You will also receive a license generation confirmation email. This message contains the generated license key file as an attachment. Add 'xilinx.notification@entitlenow.com' as a trusted sender in your email address book.



If you do not receive your license by email, you can download it directly from the Xilinx Licensing Site. See the [Managing License Key Files](#) section for details

---

## Managing License Key Files

The Product Licensing Site tracks your license key files. Select the Manage Licenses tab to see all license key files for your product licensing account.

My Account | Sign Out | Language ▾ | Documentation | Downloads | Contact Us



   
Advanced Search

[Product & Services](#) | [Technology Solutions](#) | [Market Solutions](#) | [Support](#) | [Buy Online](#) | [About Xilinx](#)

---

Home : [Support](#) : [Product Licensing](#)  
[Product Licensing](#)

Looking to register 10.1 or earlier software products?

Account:   Help





**Manage License Files for Account: Xilinx Test Account**

Host Name ▾	Host Type	Host ID	License Type	OS	Created By	Created Date
TestPC1	Ethernet MAC	132413241234	Floating	Windows 32-bit	Demo User	30 MAR 2011
TestPC2	Ethernet MAC	abcde12abcde	Node	Windows 32-bit	Demo User	30 MAR 2011
TestPC4	Ethernet MAC	129012901290	Node	Windows 32-bit	Demo User	30 MAR 2011

TomTestPC1	132413241234	Floating	Tom Hirsh	30 MAR 2009															
<b>Comments</b> ISE Design Suite product licenses for Portland design team. Reference PO #123456.																			
<table border="1"> <thead> <tr> <th>Product</th> <th>Type</th> <th>Status</th> <th>Subscription End Date</th> <th>Activated Seats</th> </tr> </thead> <tbody> <tr> <td>ISE Design Suite: Embedded Edit</td> <td>Full</td> <td>Current</td> <td>30 MAR 2012</td> <td>40</td> </tr> <tr> <td>ChipscopePro Standalone Includ</td> <td>Full</td> <td>Current</td> <td>30 MAR 2012</td> <td>50</td> </tr> </tbody> </table>					Product	Type	Status	Subscription End Date	Activated Seats	ISE Design Suite: Embedded Edit	Full	Current	30 MAR 2012	40	ChipscopePro Standalone Includ	Full	Current	30 MAR 2012	50
Product	Type	Status	Subscription End Date	Activated Seats															
ISE Design Suite: Embedded Edit	Full	Current	30 MAR 2012	40															
ChipscopePro Standalone Includ	Full	Current	30 MAR 2012	50															
<input type="button" value="Modify License"/>																			

[Jobs](#) | [Investors](#) | [Feedback](#) | [Legal](#) | [Privacy](#) | [Trademarks](#) | [Sitemap](#)

© Copyright 2010 Xilinx

Figure 2-11: Manage Licenses

Use the Manage Licenses page, to perform the actions described below.





## Exploring and Retrieving Your Existing License Key Files

Information regarding the license key files in your product licensing account are displayed in a split-section view. Click a row in the master view in the top table, to see detailed information about the license key file in the detail view in the bottom table. The detail view table displays:

- A list of product entitlements activated in the key file.

- Comments associated with the key file.

The detail view table gives you the ability to:

- Download - If your license file does not arrive via email you may download the license file here. 
- Email - The license file may be emailed to you or another user. 
- View - Gives you the ability to view the actual license file. 
- Delete - Delete the license file. Once a file is deleted it will then become available on the Create New License page and may be regenerated for another host ID. 
- View the end user license agreement (IP only).

## Modifying a License Key File

To modify an existing license key file, select the license key file in the master view. You can modify a license key file as follows:

### Delete an entire license file and place entitlement back into your account

1. From the Manage Licenses Tab (see [Figure 2-11](#)), select the license file you wish to delete.
2. Click the **Trash Can** icon located below and to the left of the license file details.
3. Click the **Accept** button to accept the Affidavit of Destruction.

**Note:** This will delete all license seats in the entire license key file and return the entitlements to your account.

### Rehost or change the license server host for a license key file

1. From the Manage Licenses Tab (see [Figure 2-11](#)), select the license file you wish to rehost.
2. Click the **Modify License** button. The Modify License screen appears.
3. Go to **System Information**.
4. Change or add new Host ID and/or Host Name by using the drop-down list and text entry boxes respectively.
5. Click the **Next** button twice and then click the **Accept** button to accept the Affidavit of Destruction.

### Activate or add additional seats to an existing licensed product entitlement

1. From the Manage Licenses Tab (see [Figure 2-11](#)), select the license file to which you wish to add seats.

2. Click the **Modify License** button. The Modify License screen appears.
3. Go to **Product Selection**.
4. For floating licenses, you will be able to change the Requested Seats field and add seats up to the total number of seats available in your entitlement.
5. Click **Next** twice. No Affidavit of Destruction is required for adding seats.

### Deactivate or remove seats from an existing licensed product entitlement

1. From the Manage Licenses Tab (see [Figure 2-11](#)), select the license file from which you wish to remove seats.
2. Click the **Modify License** button. The Modify License screen appears.
3. Go to **Product Selection**.
4. For floating licenses, you will be able to change the Requested Seats field and reduce the number of seats that will be authorized by this license file.
5. Click the **Next** button twice and then click the **Accept** button to accept the Affidavit of Destruction.

### Activate or add additional product entitlements to a license key file

1. From the Manage Licenses Tab (see [Figure 2-11](#)), select the license file to which you wish to add features/entitlements.
2. Click the **Modify License** button. The Modify License screen appears.
3. Go to **Product Selection**.
4. Check boxes of any new entitlements you wish to add to this license file.
5. Click **Next** twice. No Affidavit of Destruction is required for adding features.

### Deactivate or delete product entitlements from a license key file

1. From the Manage Licenses Tab (see [Figure 2-11](#)), select the license file to which you wish to add features/entitlements.
2. Click the **Modify License** button. The Modify License screen appears.
3. Go to **Product Selection**.
4. Check boxes of any entitlements you wish to remove from this license file.
5. Click the **Next** button twice and then click the **Accept** button to accept the Affidavit of Destruction.

Modifying a key file uses the same input form as when the license key file was created, except additional product entitlements of the same license type (floating or node-locked) are made available for licensing.

If, during any of the modification steps, you receive a message that you have exceeded your number of rehost attempts, email [cs\\_1@xilinx.com](mailto:cs_1@xilinx.com) to request additional rehost options.

## Reclaiming Deactivated Product Entitlements

A product entitlement is deactivated when one of the following occurs:

- Rehosting or changing the license server host for a license key file.
- Deactivating or removing seats from an existing licensed product entitlement.
- Deactivating or deleting product entitlements from a license key file.

The license generation facility allows the reallocation of the deactivated seats or product entitlements by making the corresponding seats or product entitlements available for activation in the product entitlements table on the Create License page.

Before the reallocation of entitlement occurs, you must first agree to an Affidavit of Destruction. This legal agreement is required to ensure the deactivated product entitlements are no longer being used.

The number of allocation operations is recorded for each user. Administrators are allowed to reallocate product entitlements five times per major release. End users are allowed to reallocate product entitlements three times per major release.

## What Happens to Your License Key File

For each product entitlement activated, a FLEXnet increment line and corresponding package line is added to the license key file. When a license key file is modified to activate (add) seats for an existing or new product entitlement, additional increment or package lines are added to the license key file.

When a license key file is rehosted or is modified to deactivate (delete) seats or product entitlements, the corresponding increment lines are regenerated or removed from the modified license key file.

---

## Legacy Licensing

If you wish to obtain a license for Releases 10.1 or earlier, click the **Legacy Licensing** tab.



Create New Licenses   Manage Licenses   **Legacy Licensing**   Orders   Manage Users

**Create and Manage 10.1 Registration Codes for Account: Xilinx - OMS TEST 456789**

NOTE: If you are beginning a new design, please use the latest version of the ISE Design Suite products. If you require ISE Design Suite version 10.1 or earlier to support an existing design, you may register prior versions of the ISE Design Suite from this tab.

For 10.1 version products, please select the products to license from the table below and click "Register". For 9.2 and earlier version products, please click on one of the following links to obtain a product Registration ID:  
[Obtain a Registration ID for 9.2 and 9.1](#)  
[Obtain a Registration ID for 8.2 and 8.1](#)  
[Obtain a Registration ID for 7.1 or earlier including ISE Classics](#)

If you have questions or need help, please contact [Software Customer Service](#) for assistance.

Selection	Product ▲	Available Seats
<input type="checkbox"/>	XILINX, TEST (omsxilinx.test@gmail.com)	

Figure 2-12: Legacy Licensing

Then complete the following steps for the respective versions:

## 9.2 and Prior Versions

1. Select the version you desire. You will be prompted to verify your contact information.
2. Fill out the requested form with the required information to receive your registration IDs. Your registration ID will be displayed on the screen and emailed for your records.
3. Go to the Xilinx download center, click the **Archive** link under the **Version** column on the left side of the page to select the product you desire.
4. During the download process you will be prompted to insert your registration ID to complete the download process.

## 10.1 Version

1. The 10.1 Version is not automatically available on the Legacy Licensing page. Contact Xilinx customer service via [cs\\_1@xilinx.com](mailto:cs_1@xilinx.com) to request access to this version.
2. Once the 10.1 entitlement is available in your product table, select the tools you would like to register and click the **Register** button located underneath the product table.
3. A 25 character alpha numeric code will be displayed next to the Unified Registration Code field, along with the code creation date.
4. Once you obtain your registration ID, go to the Xilinx download center and click on the version you desire.
5. During the download process you will be prompted to insert your registration ID to complete the download process.

## Understanding Your Tool and IP Orders

The Orders tab will display information regarding the purchasing orders that created the entitlements you see in this account.

The screenshot displays the Xilinx Orders management interface. At the top, there are navigation tabs: 'Create New Licenses', 'Manage Licenses', 'Legacy Licensing', 'Orders' (selected), and 'Manage Users'. The main content area is split into two panels.

**Orders Panel (Left):** A table listing several orders, all in a 'COMPLETED' state. The selected order is 3372646-2, dated 06/04/2009.

Date	Order Number	State	Line Items
01/05/2011	AX-ON-1294239675909	COMPLETED	1
11/23/2010	AX-ON-1290534591370	COMPLETED	1
04/18/2010	AX-ON-1271608207513	COMPLETED	1
12/12/2009	AX-ON-1260636434533	COMPLETED	1
06/04/2009	3372646-2	COMPLETED	1
06/04/2009	3372646-1	COMPLETED	1
06/04/2009	3372646-4	COMPLETED	1
06/04/2009	3372646-3	COMPLETED	1

**Order Details Panel (Right):** Shows details for Order #: 3372646-2. The order date is 06/05/2009 12:00:00, and the state is COMPLETED. The warranty period is from 04/08/2009 to 04/30/2010. A table below shows one line item:

Line	Quantity	Sku	Description
2	1	0451118	LogiCORE, 32-bit and 64-bit Initiator/Target...

Below the Order Details are two sections: **Billing Information** and **Shipping Information**.

**Billing Information:** First Name, Last Name, Email, Address 1, Address 2, City, State, Postal Code, Country.

**Shipping Information:** First Name: KRISTIN, Last Name: PERRY 222701, Email, Address 1: 3100 LOGIC DRIVE, Address 2, City: LONGMONT, State: CO, Postal Code: 80503, Country: US.

At the bottom of the interface, there is a pagination control showing 'Page 1 of 1' and 'Displaying 1 - 8 of 8'.

Figure 2-13: Order Information

- Xilinx order numbers are listed on the left panel of the screen.
- Order details populate on the right panel of the screen when you highlight specific order.
- You may only select one order at a time.
- The order's shipping address information is visible even when product is delivered electronically.

# Managing User Access to Product Licensing Account

The responsibility of administering a product licensing account may be transferred or shared with another user. The ability to add or remove users from a product licensing account is managed under the Manage Users tab.

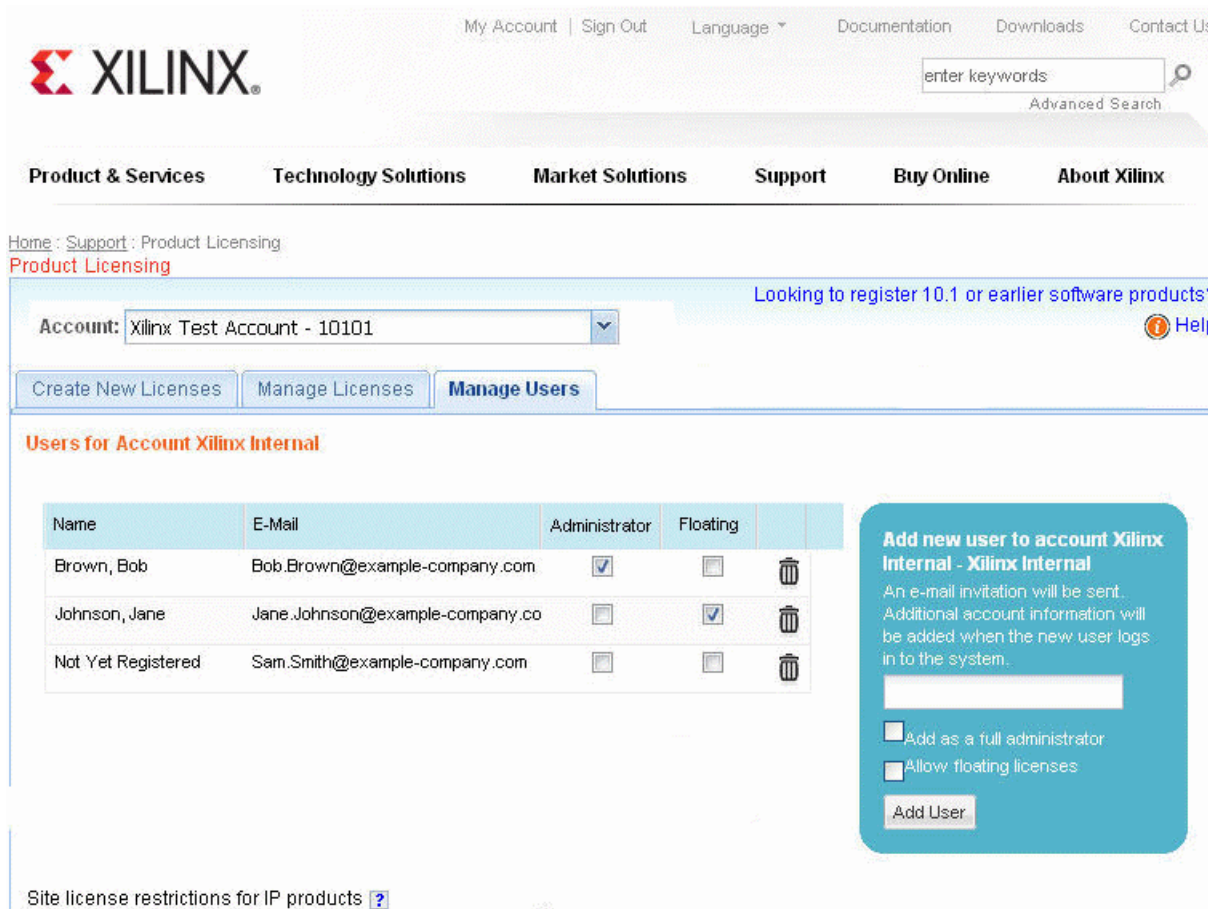


Figure 2-14: Manage Users

## Adding Users

To add a user to your product licensing account:

- Type in the corporate email address of the new user.
- Check **Add as a full administrator**, to grant the new user customer account administrative privileges. Check **Allow Floating Licenses**, to grant the new user the ability to generate Floating Licenses, but not have full administrative privileges.

**Note:** The email address you provide must be the same email address the user supplied or supplies when creating their Xilinx account. If not, the user may not be properly recognized when logging in.

If a user has already logged into the Product Licensing Site, their name appears in the user list. If the user has never been to the site, the words Not Yet Registered appears in the space for their name. Once the user has signed in, their name is filled in.

In some instances, a customer account administrator may wish to have design team members administer license key files for their own use. By leaving both Add as full administrator and Allow Floating Licenses check boxes unchecked, the user is granted the following restricted privileges:

- Can generate node-locked license keys only.
- Can view and modify only those license key files they generated for themselves.
- Cannot manage users.

If you check Allow Floating Licenses only, the restriction on node-locked keys is lifted, but the others remain. You cannot check both boxes since it is not allowed. Full administrators already have floating license generation capability.

## Removing Users

To remove administrative or floating license generation privileges from a user, uncheck the **Administrator** or **Floating** check box for that user.

To remove a user from a product licensing account, click the **Trash Can** icon for that user.

---

# Installing Your License Key File

The following subsections describe installing different types of licenses.

## Node Lock License Installation

After generating a license file, you will receive an e-mail from 'xilinx.notification@entitlenow.com'.

1. Save the license file attached to the e-mail to a temporary directory on your local system.
2. Run the Xilinx License Configuration Manager:
  - For Windows: Select **Start > All Programs > Xilinx Design Tools 14.2 > Accessories > Manage Xilinx Licenses**.
  - For Linux: Type **xlcm** in a command-line shell.

3. Click **Copy License** at the top of the Manage Xilinx Licenses tab.
4. Browse to your license file (`xilinx.lic`) and click **Open**.
5. This copies the license file to the `C:\.Xilinx` (Windows) or `<Home>/.Xilinx` directory of your computer where it will be automatically found by the Xilinx tools.
6. When the Copy License operation is complete, the table on the Manage Xilinx Licenses tab is updated with licensing information from the license file.
7. Click **Close** to exit the Xilinx License Configuration Manager.

## Floating License Installation on Servers

For existing FLEXnet license servers, a common practice is to copy the contents of the license file, mailed from 'xilinx.notification@entitlenow.com', into the existing license file on your FLEXnet server.

**Note:** Restart the floating license server to enable the Xilinx licenses.

## For New License Servers

1. Download the appropriate Xilinx FLEXnet license utilities for your server's operating system from the Xilinx Download Center:  
<http://www.xilinx.com/download/index.htm>
2. Unzip these utilities into a destination directory. Xilinx recommends you place this directory into your application search path.
3. Once the FLEXnet utilities are installed, run the following commands to start the floating license server:
  - Linux
    - `<Server Tool directory>/bin/linux/lmgrd -c <path_to_license>/Xilinx.lic -l <path_to_license>/log1.log`
    - `<Server Tool directory> bin/linux64/lmgrd -c <path_to_license>/Xilinx.lic -l <path_to_license>/log1.log`
  - Windows
    - `< Server Tool directory>\bin\nt\lmgrd -c <path_to_license>\Xilinx.lic -l <path_to_license>\log1.log`
    - `< Server Tool directory>\bin\nt64\lmgrd -c <path_to_license>\Xilinx.lic -l <path_to_license>\log1.log`

## Client Machines Pointing to a Floating License

1. Run the **Xilinx License Configuration Manager** (XLCM).

2. Click the **Manage Xilinx Licenses** tab.
3. On the Manage Xilinx Licenses tab, enter the network path to the license server in the port@server format into the XILINXD\_LICENSE\_FILE field. Click **Set**. The default Xilinx port number is 2100.
4. For Linux operating systems, licensing environment variables cannot be set using the Xilinx License Configuration Manager (XLCM). The environment variable fields are read only, and they are grayed out and there are no Set buttons. The environment variable must be set using the appropriate shell and commands.