

EPIC® HBE series

Inserts for medium power & control applications



EPIC® HBE series inserts provide reliable termination and performance in the vast majority of medium power and control applications. Methods of termination include screw, crimp, screwless cage clamp, and push-in.

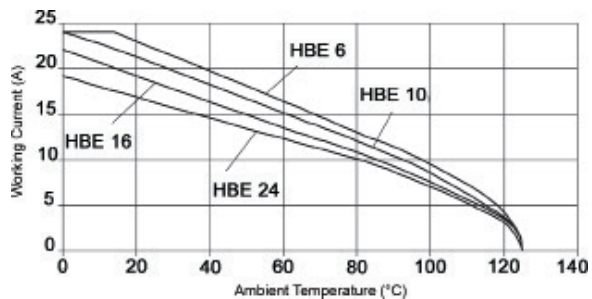
Technical data

Number of contacts:	6, 10, 16, 24, 32, 48 (+PE)	Crimp termination:	
Temperature range: - short-term:	-40°C to +100°C up to +125°C	Rated current: - UL/CSA; IEC:	16A
Rated voltage: - UL/CSA: - IEC:	600V 500V	Wire size:	20 - 12 AWG (0.5 - 4 mm ²)
Pollution level:	3	Contact material:	silver- or gold-plated copper alloy
Dimensioning transient:	6 kV	Contact resistance:	< 2 mΩ
Mating cycles:	- per DIN EN 61984:2008 Service Life Test: Tested to 100 cycles and passed - per Contact Thermal Test: Useful service in excess of 500 cycles is possible at rated voltage and current*	Cage clamp termination:	
Screw termination:		Rated current: - UL/CSA; IEC:	16A
Rated current: - UL/CSA; IEC:	16A	Wire size:	20 - 14 AWG (0.5 - 2.5 mm ²)
Wire size:	20 - 14 AWG (0.5 - 2.5 mm ²)	Contact material:	silver-plated copper alloy
Contact material:	silver-plated copper alloy	Contact resistance:	1.5 - 4 mΩ
Contact resistance:	< 2 mΩ	Push-in termination:	
		Rated current: - UL/CSA: - IEC:	13A 16A
		Wire size:	26 - 14 AWG (0.14 - 2.5 mm ²)
		Contact material:	silver-plated copper alloy
		Contact resistance:	< 2 mΩ

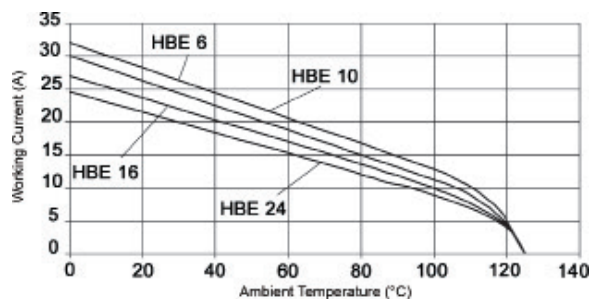
* In dry, non-conductive, non-corrosive environments when protected in a housing rated at least IP54 and disconnected for cycling and maintenance only.

EPIC® HBE derating curves

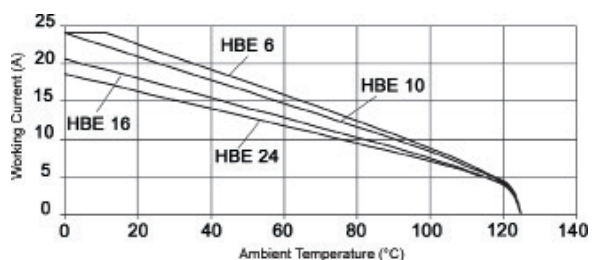
16 AWG (1.5 mm²) screw termination



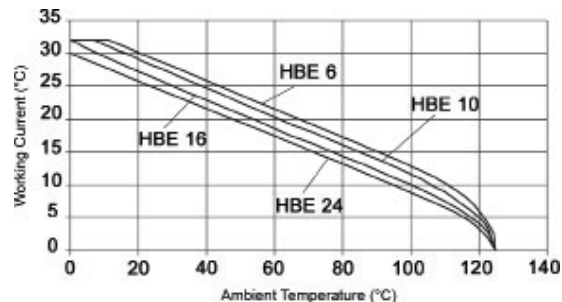
14 AWG (2.5 mm²) screw termination



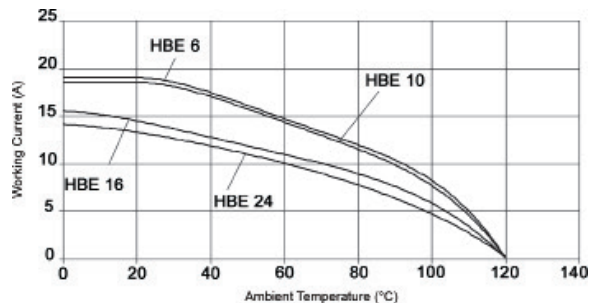
16 AWG (1.5 mm²) crimp termination



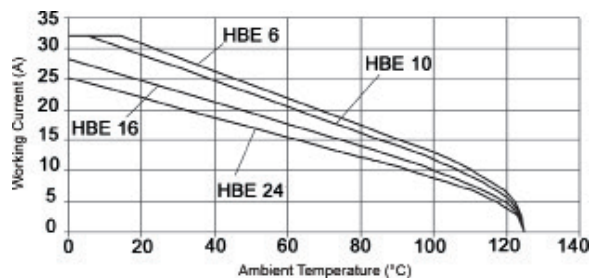
14 AWG (2.5 mm²) crimp termination



16 AWG (1.5 mm²) cage clamp






14 AWG (2.5 mm²) cage clamp



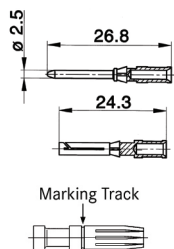
2.5 mm contacts

Machined contacts for EPIC® HBE crimp termination inserts



Contact tools			
	Crimp tool: 11147000		Crimp dies: 11147100
			Locator: 11147200

for removal of contacts, use a slotted screwdriver; no special tool is necessary

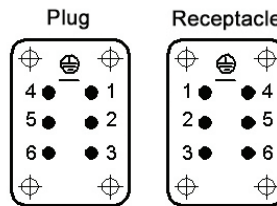
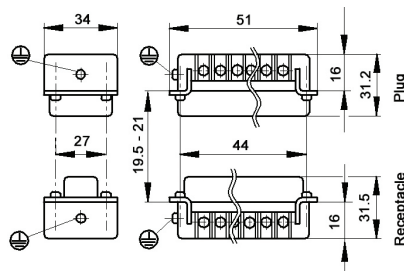
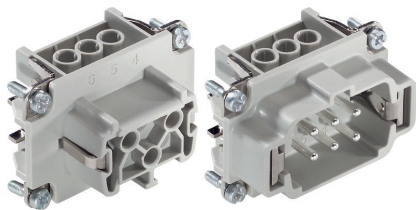


Contact size		Stripping length (mm)		# of marking tracks	Silver contacts		Gold contacts	
mm ²	AWG	pin	socket		pin	socket	pin	socket
0.5	20	7.4	7.3	—	11190000	11195000	11192000	11197000
0.75-1.0	18	7.4	7.3	1	11190100	11195100	11192100	11197100
1.5	16	7.4	7.3	2	11190200	11195200	11192200	11197200
2.5	14	7.4	7.3	3	11190300	11195300	—	—
4.0	12	7.4	7.3	—	11190400	11195400	—	—

contacts sold in bags of 100

EPIC® HBE 6

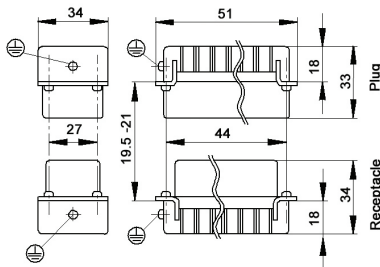
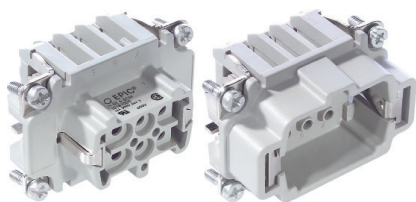
Screw termination: 600V, 16A



view from cable side

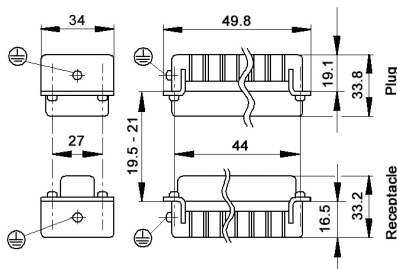
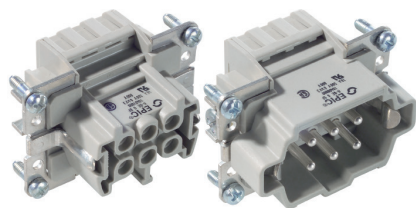
all dimensions are in mm

Crimp termination: 600V, 16A

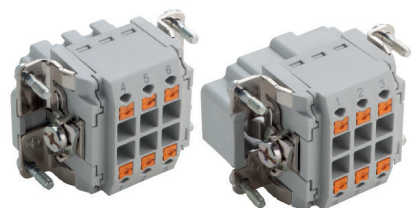


crimp contacts sold separately, see page 293

Screwless cage clamp: 600V, 16A



Push-in termination: 600V, 13A



Approvals

screw, crimp & push-in:



cage clamp:



Compatible housing



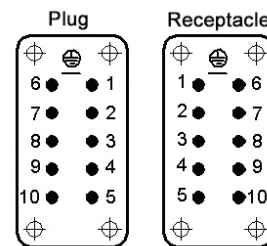
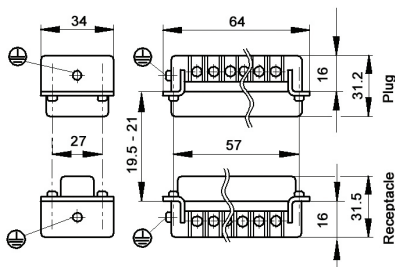
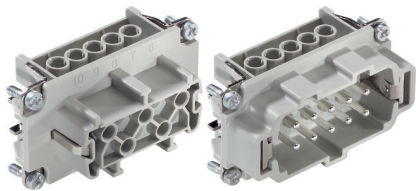
HB 6
page 379

Termination	Wire protection	Plug	Receptacle
screw	yes	10190000	10191000
screw	no	10190100	10191100
crimp	—	10180000	10181000
cage clamp	yes	10400000	10401000
push-in	yes	44423200	44423201

If not otherwise specified, all values relating to the product are nominal values. Photographs are not to scale and are not true representations of the products in question.

EPIC® HBE 10

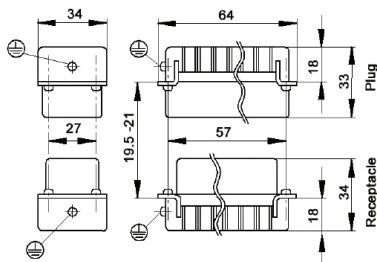
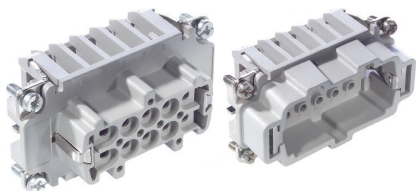
Screw termination: 600V, 16A



view from cable side

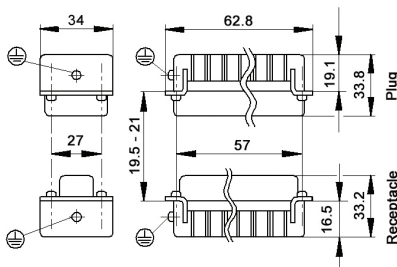
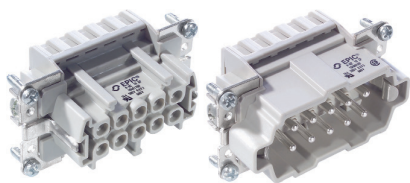
all dimensions are in mm

Crimp termination: 600V, 16A

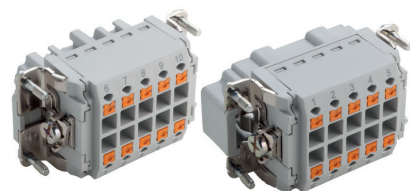


crimp contacts sold separately, see page 293

Screwless cage clamp: 600V, 16A



Push-in termination: 600V, 13A



Termination	Wire protection	Plug	Receptacle
screw	yes	10192000	10193000
screw	no	10192100	10193100
crimp	—	10182000	10183000
cage clamp	yes	10400100	10401100
push-in	yes	44423202	44423203

Approvals

screw, crimp & push-in:



cage clamp:



Compatible housing

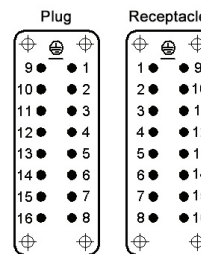
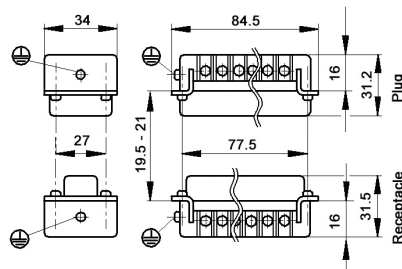
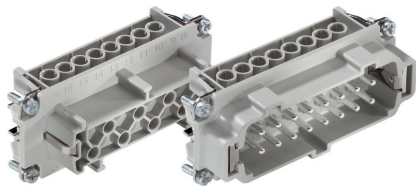


HB 10
page 382

If not otherwise specified, all values relating to the product are nominal values. Photographs are not to scale and are not true representations of the products in question.

EPIC® HBE 16

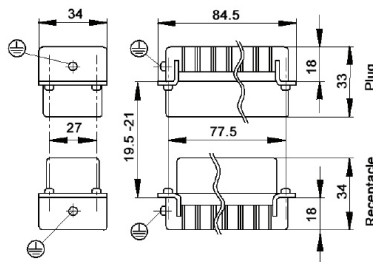
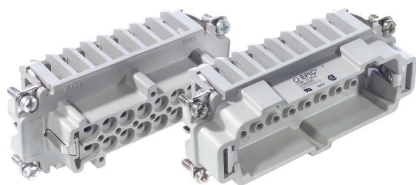
Screw termination: 600V, 16A



view from cable side

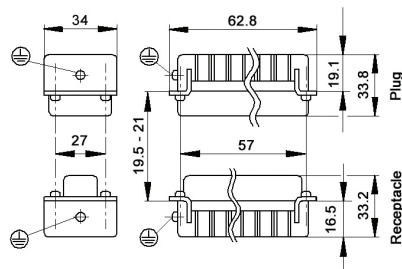
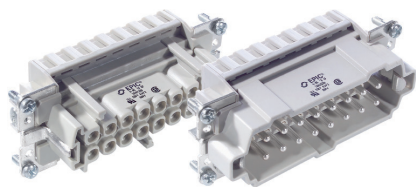
all dimensions are in mm

Crimp termination: 600V, 16A



crimp contacts sold separately, see page 293

Screwless cage clamp: 600V, 16A



Push-in termination: 600V, 13A



Approvals

screw, crimp & push-in:



cage clamp:



Compatible housing



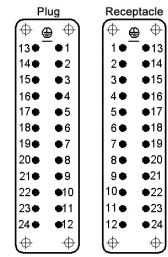
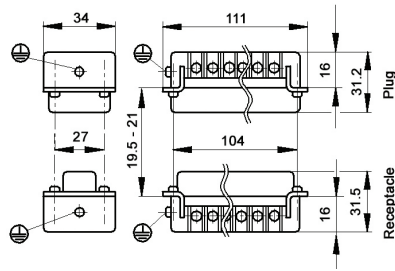
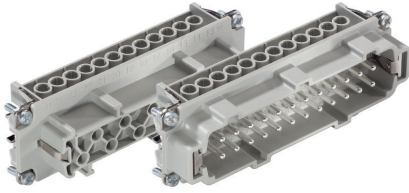
HB 16
page 388

Termination	Wire protection	Plug	Receptacle
screw	yes	10194000	10195000
screw	no	10194100	10195100
crimp	—	10184000	10185000
cage clamp	yes	10400200	10401200
push-in	yes	44423204	44423205

If not otherwise specified, all values relating to the product are nominal values. Photographs are not to scale and are not true representations of the products in question.

EPIC® HBE 24

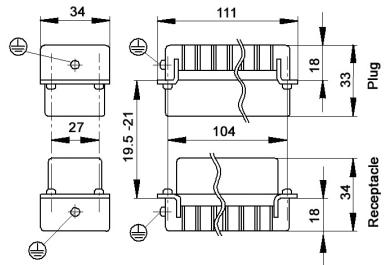
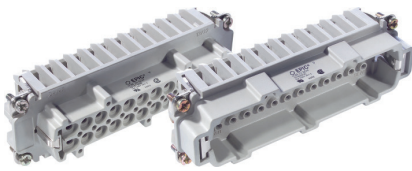
Screw termination: 600V, 16A



view from cable side

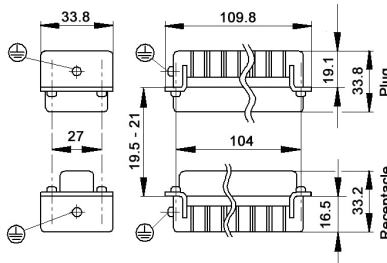
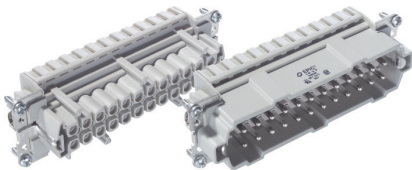
all dimensions are in mm

Crimp termination: 600V, 16A



crimp contacts sold separately, see page 293

Screwless cage clamp: 600V, 16A



Push-in termination: 600V, 13A



Termination	Wire protection	Plug	Receptacle
screw	yes	10196000	10197000
screw	no	10196100	10197100
crimp	—	10186000	10187000
cage clamp	yes	10400300	10401300
push-in	yes	44423206	44423207

Approvals

screw, crimp & push-in:



cage clamp:



Compatible housing

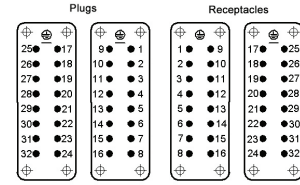
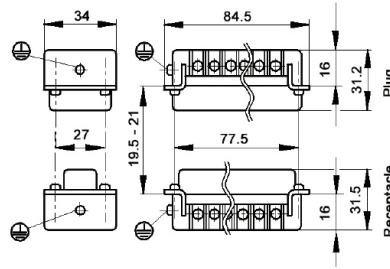
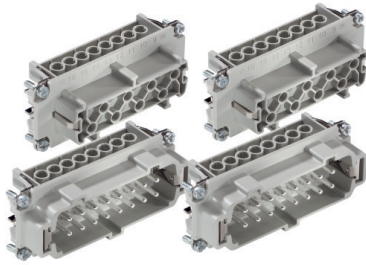


HB 24
page 394

If not otherwise specified, all values relating to the product are nominal values. Photographs are not to scale and are not true representations of the products in question.

EPIC® HBE 32

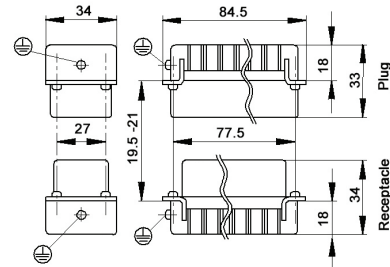
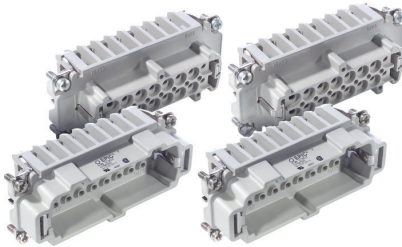
Screw termination: 600V, 16A



view from cable side

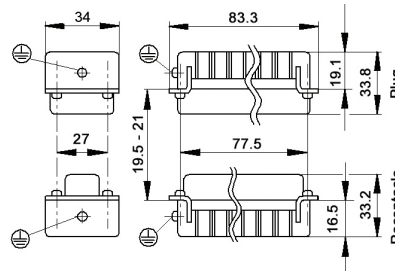
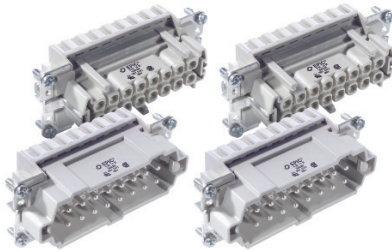
all dimensions are in mm

Crimp termination: 600V, 16A



crimp contacts sold separately, see page 293

Screwless cage clamp: 600V, 16A



Push-in termination: 600V, 13A



Approvals

screw, crimp & push-in:



cage clamp:



Compatible housing

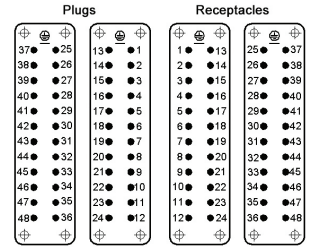
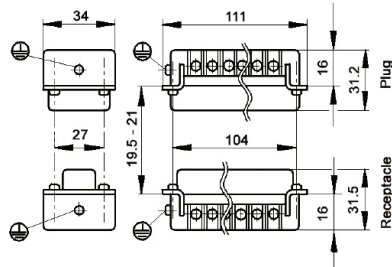
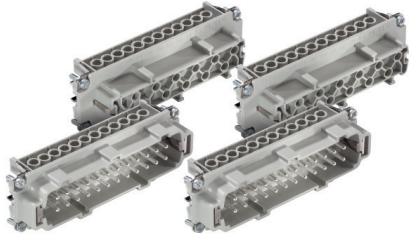


HB 32
page 400

Termination	Wire protection	Contact numbering	Plug	Receptacle
screw	yes	# 1 - 16	10194000	10195000
		# 17 - 32	10202000	10203000
screw	no	# 1 - 16	10194100	10195100
		# 17 - 32	10202100	10203100
crimp	—	# 1 - 16	10184000	10185000
		# 17 - 32	10184200	10185200
cage clamp	yes	# 1 - 16	10400200	10401200
		# 17 - 32	10400400	10401400
push-in	yes	# 1 - 16	44423204	44423205
		# 17 - 32	44423208	44423209

If not otherwise specified, all values relating to the product are nominal values. Photographs are not to scale and are not true representations of the products in question.

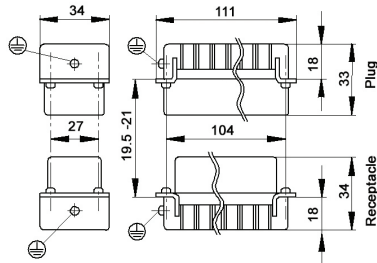
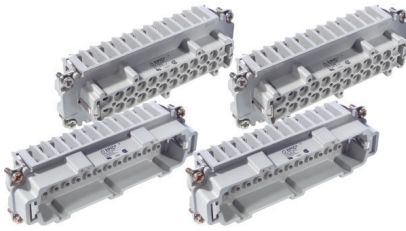
EPIC® HBE 48
Screw termination: 600V, 16A



view from cable side

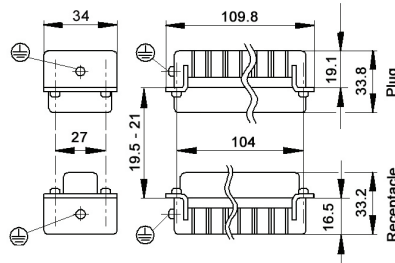
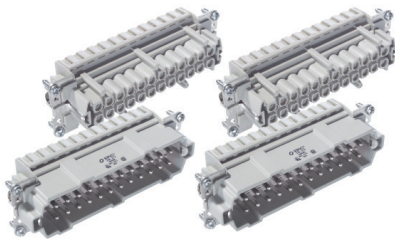
all dimensions are in mm

Crimp termination: 600V, 16A



crimp contacts sold separately, see page 293

Screwless cage clamp: 600V, 16A



Push-in termination: 600V, 13A



Termination	Wire protection	Contact numbering	Plug	Receptacle
screw	yes	# 1 - 24	10196000	10197000
		#25 - 48	10204000	10205000
screw	no	# 1 - 24	10196100	10197100
		#25 - 48	10204100	10205100
crimp	-	# 1 - 24	10186000	10187000
		#25 - 48	10186200	10187200
cage clamp	yes	# 1 - 24	10400300	10401300
		#25 - 48	10400500	10401500
push-in	yes	# 1 - 24	44423206	44423207
		#25 - 48	44423210	44423211

If not otherwise specified, all values relating to the product are nominal values. Photographs are not to scale and are not true representations of the products in question.

Approvals

screw, crimp & push-in:



cage clamp:



Compatible housing



HB 48
page 402