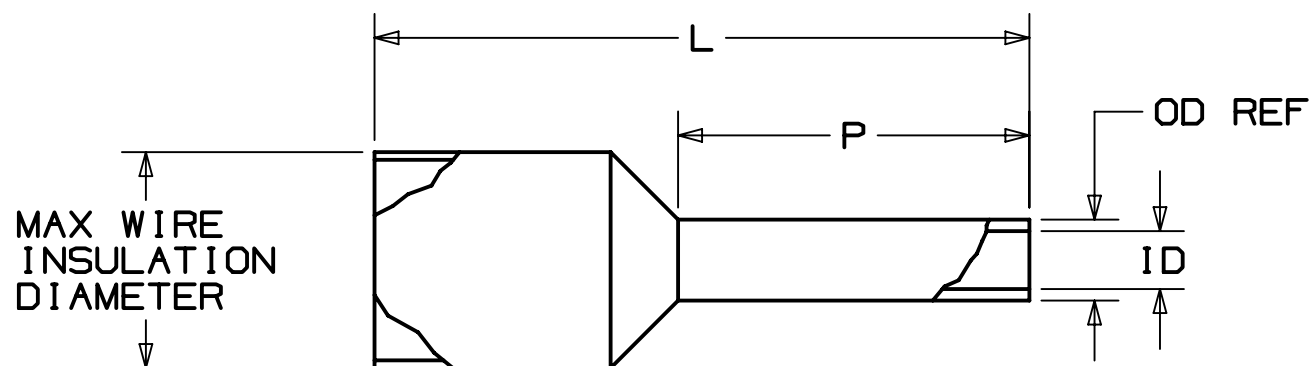


PANDUIT PART #	WIRE RANGE		COLOR (DIN)	WIRE STRIP LENGTH +1/32 -0 [+0,8 -0]	WIRE CLASS	DIMENSIONS in. [mm]				MAX WIRE INSUL DIA	INSTALLATION TOOLS/DIES	
	AWG	[mm ²]				L	P	ID	OD (REF.)		MANUAL	PNEUMATIC
* FSDX75-8	22-20	[0,50]	WHITE	15/32 [11,91]	B, K, M	0.53 [13,5]	0.31 [8,0]	0.04 [1,1]	0.05 [1,4]	0.12 [3,0]	CT-1002 CT-1003 CT-1090 ^CD-090 CT-1123 CT-1160 CT-1170 #CT-2523CH	CTFP-25 CTFP-40
FSDX76-8	18	[0,75]	GRAY	15/32 [11,9]	B, K, M	0.55 [14,0]	0.31 [8,0]	0.05 [1,3]	0.06 [1,6]	0.14 [3,4]		
FSDX77-8	-	[1,0]	RED	15/32 [11,9]	B, K, M	0.57 [14,5]	0.31 [8,0]	0.06 [1,5]	0.07 [1,8]	0.14 [3,4]		
FSDX78-8	16	[1,5]	BLACK	15/32 [11,9]	B, K, M	0.57 [14,5]	0.31 [8,0]	0.07 [1,8]	0.08 [2,1]	0.15 [3,8]		
FSDX78-10				17/32 [13,5]	B, K, M							
FSDX80-8	14	[2,5]	BLUE	15/32 [11,9]	B, K, M	0.63 [16,0]	0.31 [8,0]	0.09 [2,3]	0.10 [2,6]	0.19 [4,8]		
FSDX80-12				5/8 [15,9]	B, K, M							
FSDX81-10	12	[4,0]	GRAY	17/32 [13,5]	G, K, M	0.71 [18,0]	0.39 [10,0]	0.11 [2,9]	0.13 [3,3]	0.24 [6,2]		
FSDX81-12				5/8 [15,9]	G, K, M						0.79 [20,0]	0.47 [12,0]
FSDX84-12	6	[16,0]	BLUE	5/8 [15,9]	G, H, I, K, M	.91 [23,0]	0.47 [12,0]	0.24 [6,0]	0.25 [6,4]	0.37 [9,5]	+CT-1004 CT-1104 #CT-2504CH	---

* UL LISTED WITH 20 AWG ONLY, UL486F SCOPE IS 20 - 1/0 AWG. WHITE IS DIN COLOR FOR 20 AWG [0,5]
 + TOOL/PART IS NOT A UL LISTED COMBINATION
 ^ DIES USED WITH CT-2300 TOOL
 # CRIMP HEAD USED WITH CT-2500 TOOL

- NOTES:
 1. USED FOR:
 A. UL LISTED WITH STRANDED COPPER WIRE ONLY
 B. 221°F [105°C] MAX. OPERATING TEMPERATURE
 2. MATERIAL:
 A. STAMPING: COPPER, TIN PLATED
 B. HOUSING: POLYPROPYLENE, COLOR CODED
 C. COLOR CODE CONFORMS TO DIN 46228 STANDARD
 3. SEE www.panduit.com FOR PACKAGE QUANTITIES
 4. DIMENSIONS IN BRACKETS ARE METRIC EQUIVALENT



10	4/15/20	BWG	HPR	JADE	△ ADDED DIN No. 46228 TO NOTE 2. C.	078556/00
09	8/18	FCHE	TMR	RGB	ADDED FSDX78-10, FSDX80-8, FSDX80-12, FSDX81-10, FSD81-12 & CTFP SERIES TOOLS	040535
08	3/17	TMR	RGB	RGB	ADDED TOOL INFORMATION RELATED TO CT-2500 TOOL	A41752
07	11/16	JHNU	JLOV	RGB	ADDED CT-1090, CT-2300, CT-1160, CT-1170	A41752
06	8/16	JHNU	JLOV	RGB	ADDED CT-2523CH, CT-2504CH	A41752
05	6/15	JHNU	JHNU	RGB	REVISED STRIP LENGTH FOR PSDX84-12: 5/8 WAS 7/8	A41752
04	6/15	TMR	RGB	VMB	UL LISTED, ADDED WIRE CLASS, MAX WIRE INSUL DIA TO DRWG	A41752
REV	DATE	BY	CHK	APR	DESCRIPTION	ECN

TITLE	
FERRULES WITH SLEEVES SINGLE WIRE DIN END SLEEVES FSDX: LARGER SLEEVE DIAMETER CUSTOMER/AGENCY DRAWING	
ITEM REVISION NAME	N41752BA/10
DATASET FILE NAME	N41752BA_DC/10
PANDUIT	
UNLESS OTHERWISE SPECIFIED, DIMENSIONAL TOLERANCES ARE: IN [mm]	
.X ± .1 [2.54]	.XXX ± .005 [.127]
.XX ± .01 [.25]	ANGLES ± 5°
THIRD ANGLE PROJECTION	
A41752	
DRAWN BY	DATE
FCHE	8/31/2018
CHK	SCALE
	N.T.S.
DRAWING NUMBER:	
A41752	
SIZE	SHT 1 OF 1
B	