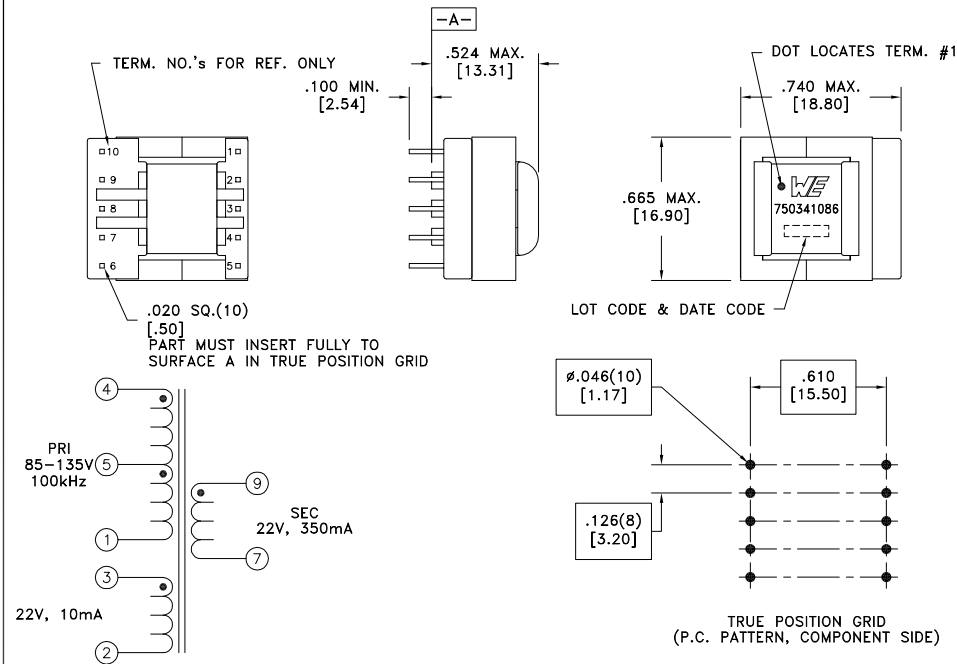


|                   |      |               |
|-------------------|------|---------------|
| CUSTOMER TERMINAL | RoHS | LEAD(Pb)-FREE |
| Sn96%, Ag4%       | Yes  | Yes           |

more than you expect



ELECTRICAL SPECIFICATIONS @ 25°C unless otherwise noted:

| PARAMETER          | TEST CONDITIONS                      | VALUE              |
|--------------------|--------------------------------------|--------------------|
| D.C. RESISTANCE    | 4-1 @20°C                            | 1.400 ohms max.    |
| D.C. RESISTANCE    | 3-2 @20°C                            | 1.700 ohms max.    |
| D.C. RESISTANCE    | 9-7 @20°C                            | 0.160 ohms max.    |
| INDUCTANCE         | 4-1 10kHz, 100mVAC, Ls               | 0.850mH $\pm 10\%$ |
| LEAKAGE INDUCTANCE | 4-1 tie(2+3+7+9), 10kHz, 100mVAC, Ls | 12.50uH max.       |
| DIELECTRIC         | 1-9 tie(3+4+core), 4500VAC, 1 second | -                  |
| DIELECTRIC         | 1-2 625VAC, 1 second                 | -                  |
| URNS RATIO         | (4-1):(3-2)                          | 3.808:1, $\pm 1\%$ |
| URNS RATIO         | (4-1):(9-7)                          | 3.808:1, $\pm 1\%$ |

GENERAL SPECIFICATIONS:

OPERATING TEMPERATURE RANGE: -40°C to +125°C including temp rise.

Designed to comply with the following requirements as defined by IEC61558-2-17:  
- Reinforced insulation for a primary circuit at a working voltage of 400VDC.

Wire insulation & RoHS status not affected by wire color.  
Wire insulation color may vary depending on availability.

|      |      |  |  |  |                                     |                              |
|------|------|--|--|--|-------------------------------------|------------------------------|
| REV. | DATE | Packaging Specifications<br>Method: Tray<br>PKG-0887<br>www.we-online.com/midcom |  | Tolerances unless otherwise specified:<br>Angles: $\pm 1^\circ$<br>Fractions: $\pm 1/64$ | DRAWING TITLE<br><b>TRANSFORMER</b> | PART NO.<br><b>750341086</b> |
| 6C   | 9/12 |  |  | Decimals: $\pm .005$ [.13]<br>Footprint: $\pm .001$ [.03]                                |                                     |                              |
| 6B   | 6/12 |  |  |  |                                     |                              |
| 6A   | 1/12 | SEE REVISION SHEET FOR REVISION LEVEL  |  | This drawing is dual dimensioned. Dimensions in brackets are in millimeters.             | eiSos p/n: 750341086                | SPECIFICATION SHEET 1 OF 1   |

