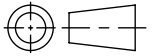
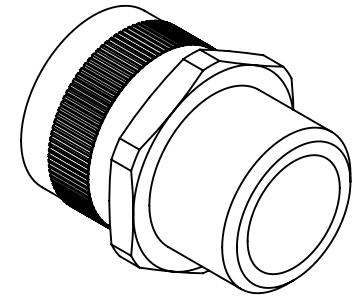
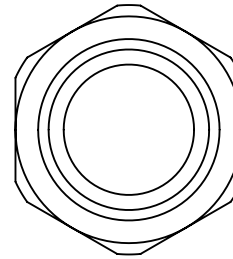
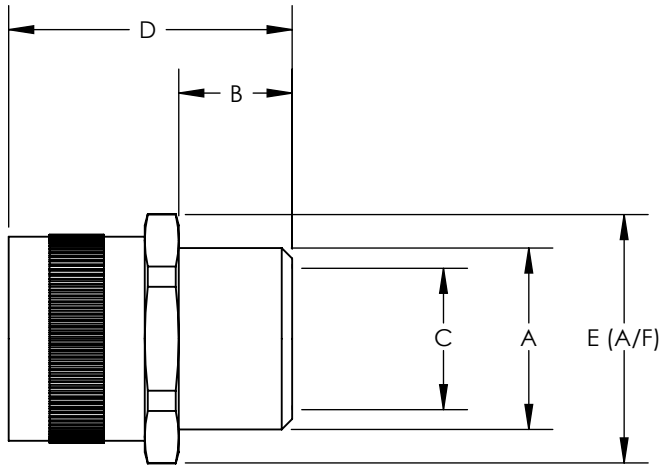


SW2014



Revision level			Revision Record	Changed	Date	Approved	Date
Drawing	State	Part					
00.0	Design Release		SEE ECN# 013633	GRW	11/29/2016	KAC	11/29/2016



Conduit Size		HellermannTyton Part Number	Manufacturer Reference Number	Metric Thread	Dimension (mm)							
in.	mm			A	B		C		D		E	
					in.	mm	in.	mm	in.	mm	in.	mm
1/4	10.0	FU10-M12-M	FU10-M12-M	M12 X 1.5	0.28	7.0	0.22	5.6	0.83	21.0	0.51	13.0
5/16	12.0	FU12-M16-M	FU12-M16-M	M16 X 1.5	0.39	10.0	0.33	8.5	0.90	23.0	0.67	17.0
3/8	16.0	FU16-M16-M	FU16-M16-M	M16 X 1.5	0.39	10.0	0.45	11.5	0.98	25.0	0.79	20.0
3/8	16.0	FU16-M20-M	FU16-M20-M	M20 X 1.5	0.39	10.0	0.45	11.5	0.98	25.0	0.87	22.0
1/2	20.0	FU20-M20-M	FU20-M20-M	M20 X 1.5	0.39	10.0	0.60	15.3	1.04	26.3	0.94	24.0
3/4	25.0	FU25-M25-M	FU25-M25-M	M25 X 1.5	0.39	10.0	0.75	19.1	1.16	29.5	1.14	29.0
1	32.0	FU32-M32-M	FU32-M32-M	M32 X 1.5	0.51	13.0	1.03	26.2	1.45	36.8	1.42	36.0
1-1/4	40.0	FU40-M40-M	FU40-M40-M	M40 X 1.5	0.55	14.0	1.36	34.6	1.54	39.0	1.89	48.0
1-1/2	50.0	FU50-M50-M	FU50-M50-M	M50 X 1.5	0.59	15.0	1.76	44.7	1.65	42.0	2.28	58.0
2	63.0	FU63-M63-M	FU63-M63-M	M63 X 1.5	0.71	18.0	2.14	54.1	1.97	50.0	2.76	70.0

- NOTES:
 1. OPERATING TEMPERATURE
 -58° F TO +572° F (-50° C TO +300° C)
 2. RoHS
 3. HF
 4. IP RATING IP40
 5. FLAMMABILITY SELF-EXTINGUISHING (EN 61386)
 6. PULL OFF STRENGTH 265 LBS (120KG)

Material
 NICKEL PLATED BRASS

Units: **inches**
 Dimension without tolerances details to:
 .xxxx = ±.0005
 .xxx = ±.005
 .xx = ±.01
 .x = ±.03
 None = ±.06
 < = ±0.5°
 Dimension Formatted in [mm]

The copyright of this drawing is reserved by HellermannTyton. It is issued on condition that it is not reproduced, copied, or disclosed to a third party, either wholly or in part, without the consent of HellermannTyton.

Drawn GRW 11/29/2016
 Approved KAC 11/29/2016
HellermannTyton
 North America
 Email: corp@htamericas.com
 Web: www.hellermann.tyton.com

Article/Type-No FU-M SERIES
 Title **HELAGUARD FIXED THREAD STRAIGHT COMPRESSION FITTING FOR FU-x METALLIC CONDUITS**
 Drawing-No PRODUCTION : Phase
16-1967-001-CSU

Scale
 Project Number PRP 16-1967
 Format AH
 Sheet 1/1