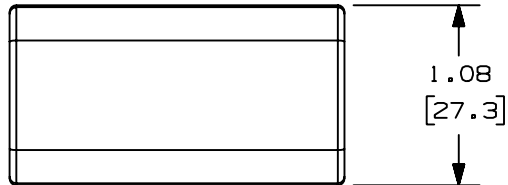


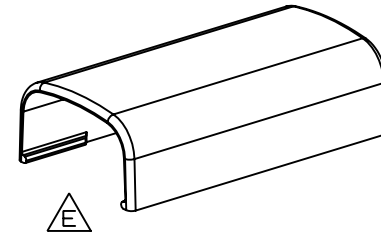
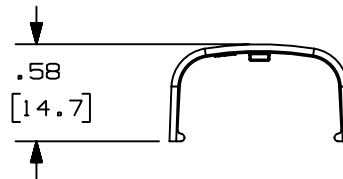
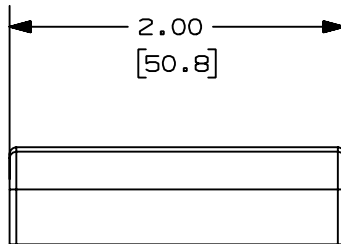
THIS COPY IS PROVIDED ON A RESTRICTED BASIS AND IS NOT TO BE USED IN ANY WAY DETRIMENTAL TO THE INTERESTS OF PANDUIT CORP.

$\triangle B$	PANDUIT P/N	WEIGHT
$\triangle C$	CF5	0.82 LB/100 PCS. (373g/100 PCS.)



$\triangle D$  NOTES:

1. SEE CURRENT CATALOG FOR ADDITIONAL PART NUMBER SUFFIXES TO INDICATE COLOR AND OR PACKAGE QUANTITY.
2. DIMENSIONS IN PARENTHESIS ARE IN METRIC.



CAD FILENAME/LAYERS D34474BC\_DC\_CF5\_01.prt

						PANDUIT CORP. TINLEY PARK, ILLINOIS	
						COUPLER FITTING (CF5) CUSTOMER DRAWING	
						UNLESS OTHERWISE SPECIFIED, DIMENSIONAL TOLERANCES ARE: (.X) ± (.XXX) ± (.XX) ± .03(.8) ANGLES ±	
						UNLESS OTHERWISE SPECIFIED, ALL DIMENSIONS ARE GIVEN IN INCHES, THIRD ANGLE PROJECTION.	
6	7-2-02	JHN/URMHI	F.	REVISED MATERIAL IN DRAWING TITLE BLOCK.	16867	RGRD	RGRD
5	8-28-00	M/SO	HIW	E. REVISED AND REDRAWN ON CAD.	16867	HIW	HIW
4	10-3-91	DW	CF	D. REVISED NOTE AND REMOVED COLOR FROM DRAWING.	16867		CF
3	2-28-91	DW	CF	C. REVISED COLORS: OMIT BG, LI, LG. ADDED INT. WHITE AND INT. GRAY.	16867		WJB
2	12-2-87	LDB	WJB	B. ADDED PART NUMBERS CF5E1 AND CF5LI.	16867		WJB
1	5-14-82	KJS	JK	A. POLYSTYRENE WAS ABS.			JAK
R	9-14-81	KJS	HP	DRAWING RELEASED			HP
REV	DATE	BY	CHK	DESCRIPTION	ECN - R	CUST	SUP
						DRAWN BY KJS MAT'L: ABS	
						DATE 9-10-81	
						CHK'D JK	
						SCALE FULL	
						DRAWING NO. SS-16867	
						DWG SIZE A	