

# Industrial Connectors Selection Guides

CAT.No.IND-GC-D001.FEB.2021



**Japan Aviation Electronics  
Industry, Limited**

# Small Interface Connectors

Conformed to JIS C 5432 · Compact and lightweight connector

## SRCN Series



Connector  
Details



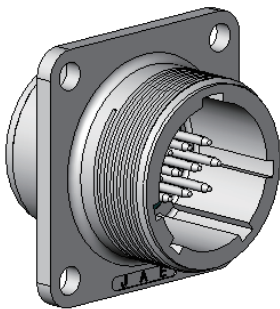
### Features >

- Secure screw, mating requiring minimal force
- Selectable pin and socket insulator orientation based on application
- Socket insulator contact entry is closed to smoothly guide pin contact insertion

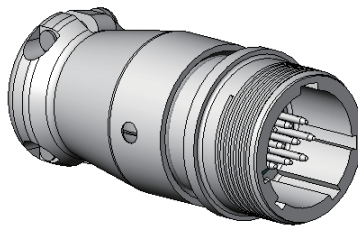
### General Specifications >

Number of Contacts	3、5、7、10、16、24
Rated Current (by contact size)	5A max.(#20 Cont.) 10A max.(#16 Cont.)
Dielectric Withstanding Voltage	AC 1,000V
Insulation Resistance	1,000MΩ min.
Operating Temperature	-25℃~ +85℃
Applicable Wire	#20 Cont. : AWG 20 max. #16 Cont. : AWG 16 max.

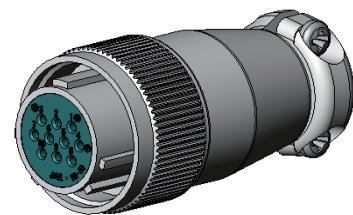
- JIS C 5432 standard compliant Compact screw mating type connector (solder connection)



Panel mount  
receptacle



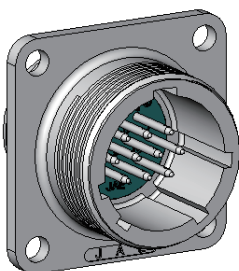
Cable in-line  
receptacle



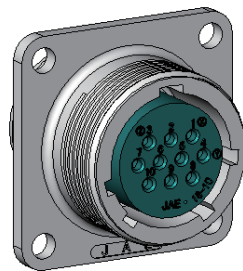
Straight plug

### ■ Selectable Pin/Socket Insert

Use of press contact provides light-weight and low cost



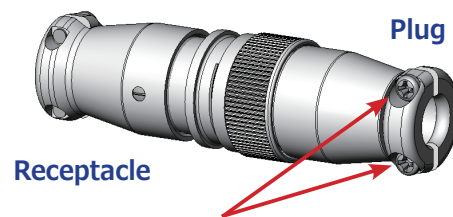
Pin inserts



Socket inserts

### ■ Strong cable Retention

Panel mount and in-line solution available



Receptacle

Plug

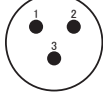
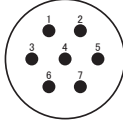
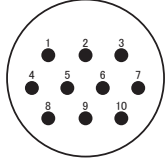
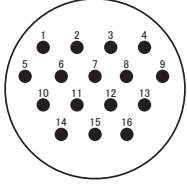
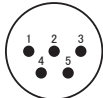
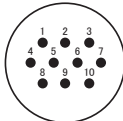
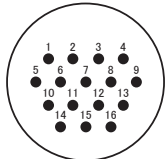
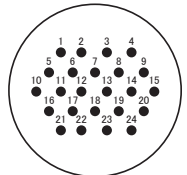
Screw tightened cable clamp will provide excellent cable retention.

# Small Interface Connectors

Conformed to JIS C 5432 · Compact and lightweight interface connector

## SRCN Series

### ■ Contact arrangement

Arrangement	13-3	16-7	21-10	25-16
Contact arrangement (View of pin insert from mating side)				
Size x Number of Contacts	#16 × 3 pos.	#16 × 7 pos.	#16 × 10 pos.	#16 × 16 pos.
Rated Current	10A	10A	10A	10A
Dielectric Withstanding Voltage	1,000V	1,000V	1,000V	1,000V
Arrangement	13-5	16-10	21-16	25-24
Contact arrangement (View of pin insert from mating side)				
Size x Number of Contacts	#20 × 5 pos.	#20 × 10 pos.	#20 × 16 pos.	#20 × 24 pos.
Rated Current	5A	5A	5A	5A
Dielectric Withstanding Voltage	1,000V	1,000V	1,000V	1,000V

## Before placing an order

- ① The values specified in this catalogue are only for reference. The products and specifications are subject to change without notice. Contact our sales staff for further information before considering or ordering any of our products. For purchase, a product specification must be agreed upon.
- ② Users are requested to provide protection circuits and redundancy circuits to ensure safety of the equipment, and sufficiently review the suitability of JAE's products to the equipment.
- ③ The products presented in this catalogue are designed for the uses recommended below. We strongly suggest you contact our sales staff when considering use of any of the products in any other way than the recommended applications or for a specific use that requires an extremely high reliability.

### **(1) Applications that require consultation:**

- (i) Please contact us if you are considering use involving a quality assurance program that you specify or that is peculiar to the industry, such as:
  - Automotive electrical components, train control, telecommunications devices (mainline), traffic light control, electric power, combustion control, fire prevention or security systems, disaster prevention equipment, etc.
- (ii) We may separately give you our support with a quality assurance program that you specify, when you think of a use such as:
  - Aviation or space equipment, submarine repeaters, nuclear power control systems, medical equipment for life support, etc

### **(2) Recommended applications include:**

Computers, office appliances, telecommunications devices (terminals, mobile units), measuring equipment, audiovisual equipment, home electric appliances, factory automation equipment, etc.