



DURA-MARK™ PTR2E Thermal Transfer Printer And Accessories

Create a variety of high quality, custom labels

- *It's Quick!* — Custom capability allows high quality labels to be produced in-house for medium volume applications
- Choose from an assortment of self-laminating labels, heat shrink labels, component labels and colored thermal transfer rolls
- Produces high quality, opaque thermal transfer print
- Works with most standard PC's and label printing software including **PANDUIT® PAN-MARK®** Labeling Software

Mechanical Information

Print Method:	Thermal transfer and direct thermal printing		
Size:	Height:	6.8"	(173 mm)
	Width:	7.9"	(200 mm)
	Depth:	9.75"	(226 mm)
	Weight:	4 lbs.	(1.8kg)
Print Speed:	Select constant print speeds of 1", 1.5" or 2" (25.4, 38.1, or 50.8mm) per second		
Double Buffer:	Contains a double buffer which makes the printer capable of printing continuously from WINDOWS†		
Sensors:	See through sensor designed for die-cut labels		
Graphics Resolution:	203 dpi (8 dots/mm)		

Print Information

- Fonts can be printed in four directions: 0°, 90°, 180° and 270°
- Capable of reverse print, bar coding and graphics
- Prints labels up to 32" (813 mm) long with characters up to 3.5" (89 mm) high
- 4.09" (104 mm) maximum print width
- Capable of horizontal and vertical print

Part Number	Description	Std. Pkg. Qty*
PTR2E	Thermal Transfer Printer Includes printer, 120 VAC Adapter, power cord and manual	1
PTR2-RS	External Label Roll Stand Used to rear feed labels that are not supplied on 1.00" (25.4 mm) cores	1
PTR-CLN	Printer Cleaning Kit Contains 4 oz. (116 ml) bottle cleaning solution with MSDS, cleaning pen, 100 swabs, 12 alcohol wipes and instructions	1
PTR2E-CASE	Hardside Carrying Case Accommodates printer, AC adapter, ribbons, printer cable, labels and tools	1
PTR2-AC	Replacement PTR2E 120 VAC Power Supply	1

*Order number required in multiples of Std. Pkg. Qty.

†WINDOWS is a registered trademark of Microsoft Corp.

PANDUIT® PTR2E Ribbons and Labels

PTR2E Thermal Transfer Ribbons

Available in three types:

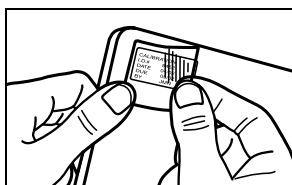
- **High Performance Resin Ribbons** for harsh environments
Provide excellent durability, print quality, chemical resistance and abrasion resistance
- **Versatile Wax/Resin Hybrid Ribbons** for printing on a wide range of materials
Provide good durability, excellent print quality, and versatility to print on a variety of Panduit labels
- **Wax Ribbons** for general purpose labeling
Economical solution provides good print quality on self-laminating labels and heat shrink markers

Material	Type of Ribbon		
	Wax/Resin Hybrid	Wax	Resin
Destructible Paper	◆	◆	
Destructible Polyethylene	◆		◆
Heat Shrink	◆	◆	
KAPTON [▲] (Polyimide)	◆		
Paper Continuous Tape	◆	◆	
Polyester	◆		◆
Polyester Continuous Tape	◆		◆
Self-Laminating TEDLAR [▲]	◆	◆	
Self-Laminating Vinyl Film	◆	◆	
TEDLAR [▲]	◆		◆
Vinyl Cloth	◆	◆	
Vinyl Continuous Tape	◆		◆

[▲]KAPTON and TEDLAR are the registered trademarks of E.I. DuPont Co.

Part Number	Material	Width In. (mm)	Height Ft. (m)	Color	Std. Pkg. Qty.*
TTRH2-BL	Wax/Resin Hybrid	2.52 (64.0)	299 (91.1)	Black	1
TTRH-BL		4.33 (110.0)	299 (91.1)	Black	
TTRW2-BL	Wax	2.50 (63.5)	299 (91.1)	Black	
TTRW-BL		4.33 (110.0)	299 (91.1)	Black	
TTR2-BL	Resin	2.50 (63.5)	299 (91.1)	Black	
TTR2-WH			262 (79.8)	White	
TTR-RED		4.33 (110.0)	299 (91.1)	Red	
TTR-GRN			299 (91.1)	Green	
TTR-BLU			299 (91.1)	Blue	
TTR-BL			299 (91.1)	Black	
TTR-WH			262 (79.8)	White	

*Order number of ribbons required in multiples of Std. Pkg. Qty.



Laminated Label

- Can be used for wrapping around wires or in flat applications
- Print and apply top white label and overlamine with clear bottom label
- Material: GMV3 Vinyl

Part Number	Print-On Label Size In. (mm)	Overlamine Label Size In. (mm)	Labels Per Row	Nominal Cable O.D. Range In. (mm)	Std. Pkg. Qty.*
TTSL-2P	1.00 x 0.50 (25.4 x 12.7)	1.00 x 1.00 (25.4 x 25.4)	4	0.16 - 0.32 (4.0 - 8.1)	2500
TTSL-7P	2.00 x 1.00 (50.8 x 25.4)	2.00 x 2.94 (50.8 x 74.7)	2	0.32 - 0.93 (8.1 - 23.7)	500

*Order number of labels required in multiples of Std. Pkg.

PANDUIT® PTR2E Self-Laminating Labels



PTR2E Self-Laminating Labels

- Designed to identify all sizes of wires and cables quickly and economically
- Overlaminates protects legends for clear, permanent identification
- Vinyl material for indoor applications and TEDLAR[▲] material for outdoor and high temperature applications
- Labels are on 1.0" (25.4mm) cores for PTR2E Printer
- For best results, print with TTRW-BL Wax or TTRH-BL Hybrid Ribbons

Part Number	Label Width x Height In. (mm)	Print-On Height In. (mm)	Labels Per Row	Nominal Cable Diameter Range In. (mm)	Print-On Area Color	Material	Std. Pkg. Qty.*
TTSL-1‡	0.50 x 1.50 (12.7 x 38.1)	0.50 (12.7)	8	0.16 - 0.32 (4.0 - 8.1)	White	GMV3 Vinyl	5000
TTSL-53	0.50 x 1.50 (12.7 x 38.1)	0.50 (12.7)	8		White	GMT1 TEDLAR	5000
TTSL-247	0.80 x 0.94 (20.3 x 23.9)	0.38 (9.7)	5	0.12 - 0.18 (3.0 - 4.5)	White	GMV3 Vinyl	5000
TTSL-246	0.80 x 0.94 (20.3 x 23.9)	0.38 (9.7)	5		White	GMT1 TEDLAR [▲]	5000
TTSL-249‡	1.00 x 0.75 (25.4 x 19.1)	0.38 (9.7)	4	0.13 - 0.13 (3.0 - 3.0)	White	GMV3 Vinyl	2500
TTSL-248	1.00 x 0.75 (25.4 x 19.1)	0.38 (9.7)	4		White	GMT1 TEDLAR	2500
TTSL-251‡	1.00 x 0.94 (25.4 x 23.9)	0.38 (9.7)	4	0.12 - 0.19 (3.0 - 4.5)	White	GMV3 Vinyl	2500
TTSL-250	1.00 x 0.94 (25.4 x 23.9)	0.38 (9.7)	4		White	GMT1 TEDLAR	2500
TTSL-2‡	1.00 x 1.50 (25.4 x 38.1)	0.50 (12.7)	4	0.16 - 0.32 (4.0 - 8.1)	White	GMV3 Vinyl	2500
TTSL-54	1.00 x 1.50 (25.4 x 38.1)	0.50 (12.7)	4	0.16 - 0.32 (4.0 - 8.1)	White	GMT1 TEDLAR	2500
TTSL-13	1.00 x 1.60 (25.4 x 40.6)	0.80 (20.3)	4	0.25 (6.4)	White	GMV3 Vinyl	1000
TTSL-4‡	1.00 x 2.44 (25.4 x 62.0)	1.00 (25.4)	4	0.32 - 0.46 (8.1 - 11.6)	White	GMV3 Vinyl	1500
TTSL-56	1.00 x 2.44 (25.4 x 62.0)	1.00 (25.4)	4		White	GMT1 TEDLAR	1500
TTSL-6‡	1.00 x 3.94 (25.4 x 100.1)	1.00 (25.4)	4	0.32 - 0.93 (8.1 - 23.7)	White	GMV3 Vinyl	1000
TTSL-58	1.00 x 3.94 (25.4 x 100.1)	1.00 (25.4)	4		White	GMT1 TEDLAR	1000
TTSL-601	1.50 x 2.48 (38.0 x 63.0)	0.75 (19.0)	1	0.24 - 0.51 (6.1 x 13.0)	White	GMT1 TEDLAR	500
TTSL-600	1.89 x 3.17 (48.0 x 80.5)	0.71 (8.0)	1	0.23 - 0.78 (5.8 x 19.8)	White	GMV3 Vinyl	250
TTSL-3‡	2.00 x 1.50 (50.8 x 38.1)	0.50 (12.7)	2	0.16 - 0.32 (4.0 - 8.1)	White	GMV3 Vinyl	1000
TTSL-55	2.00 x 1.50 (50.8 x 38.1)	0.50 (12.7)	2	0.16 - 0.32 (4.0 - 8.1)	White	GMT1 TEDLAR	1000
TTSL-5‡	2.00 x 2.44 (50.8 x 62.0)	1.00 (25.4)	2	0.32 - 0.46 (8.1 - 11.6)	White	GMV3 Vinyl	500
TTSL-57	2.00 x 2.44 (50.8 x 62.0)	1.00 (25.4)	2		White	GMT1 TEDLAR	500
TTSL-7	2.00 x 3.94 (50.8 x 100.1)	1.00 (25.4)	2	0.32 - 0.93 (8.1 - 23.7)	White	GMV3 Vinyl	500
TTSL-59	2.00 x 3.94 (50.8 x 100.1)	1.00 (25.4)	2		White	GMT1 TEDLAR	500

*Order number of labels required in multiples of Std. Pkg. Qty.

▲TEDLAR is the registered trademark of E.I. DuPont Co.

‡ The following parts are available with TIA Specified Color Print-On Areas:

Print-On Area Color								
White	Blue	Brown	Gray	Green	Orange	Red	Violet	Yellow
TTSL-1	TTSL-1BU	TTSL-1BR	TTSL-1GR	TTSL-1IG	TTSL-1OR	TTSL-1RD	TTSL-1VL	TTSL-1YL
TTSL-2	TTSL-2BU	TTSL-2BR	TTSL-2GR	TTSL-2IG	TTSL-2OR	TTSL-2RD	TTSL-2VL	TTSL-2YL
TTSL-3	TTSL-3BU	TTSL-3BR	TTSL-3GR	TTSL-3IG	TTSL-3OR	TTSL-3RD	TTSL-3VL	TTSL-3YL
TTSL-4	TTSL-4BU	TTSL-4BR	TTSL-4GR	TTSL-4IG	TTSL-4OR	TTSL-4RD	TTSL-4VL	TTSL-4YL
TTSL-5	TTSL-5BU	TTSL-5BR	TTSL-5GR	TTSL-5IG	TTSL-5OR	TTSL-5RD	TTSL-5VL	TTSL-5YL
TTSL-6	TTSL-6BU	TTSL-6BR	TTSL-6GR	TTSL-6IG	TTSL-6OR	TTSL-6RD	TTSL-6VL	TTSL-6YL
TTSL-249	TTSL-249BU	TTSL-249BR	TTSL-249GR	TTSL-249IG	TTSL-249OR	TTSL-249RD	TTSL-249VL	TTSL-249YL
TTSL-251	TTSL-251BU	TTSL-251BR	TTSL-251GR	TTSL-251IG	TTSL-251OR	TTSL-251RD	TTSL-251VL	TTSL-251YL
TTSL-600	—	—	—	—	—	—	—	TTSL-600Y

PANDUIT® PTR2E Heat Shrink Markers



Heat Shrink Wire and Cable Markers

- Produce durable, high quality permanent heat shrink markers
- Pre-cut tubing mounted on plastic carrier
- Flattened polyolefin material
- Service Temperature Range: -22°F to 220°F (-30°C to 105°C)
- Shrink Ratio 3:1 @ 212°F (100°C)
- Meets U.L. Standard 224 for flammability
- For best results, print with TTRW-BL Wax or TTRH-BL Hybrid Ribbon

White Part Number	Yellow Part Number	Tubing Diameter In. (mm)	Width In. (mm)	Labels Per Row	Nominal Cable O.D. In. (mm)	Labels Per Roll	Std. Pkg. Qty.*
Standard Package Parts							
LHS12W1	LHS12Y1	0.13 (3.2)	2.00 (50.8)	1	0.04 - 0.13 (1.1 - 3.2)	500	1
LHS12-15W1	—	0.13 (3.2)	1.50 (38.1)	1		500	1
LHS12W2	LHS12Y2	0.13 (3.2)	1.00 (25.4)	2		1000	1
LHS12-15W2	—	0.13 (3.2)	0.75 (19.1)	2		1000	1
LHS12W4	LHS12Y4	0.13 (3.2)	0.50 (12.7)	4		2000	1
LHS18W1	LHS18Y1	0.18 (4.8)	2.00 (50.8)	1	0.06 - 0.18 (1.6 - 4.8)	500	1
LHS18-15W1	—	0.18 (4.8)	1.50 (38.1)	1		500	1
LHS18W2	LHS18Y2	0.18 (4.8)	1.00 (25.4)	2		1000	1
LHS18-15W2	—	0.18 (4.8)	0.75 (19.1)	2		1000	1
LHS18W4	LHS18Y4	0.18 (4.8)	0.50 (12.7)	4		2000	1
LHS25W1	LHS25Y1	0.25 (6.4)	2.00 (50.8)	1	0.08 - 0.25 (2.1 - 6.4)	500	1
LHS25-15W1	—	0.25 (6.4)	1.50 (38.1)	1		500	1
LHS25W2	LHS25Y2	0.25 (6.4)	1.00 (25.4)	2		1000	1
LHS25-15W2	—	0.25 (6.4)	0.75 (19.1)	2		1000	1
LHS25W4	LHS25Y4	0.25 (6.4)	0.50 (12.7)	4		2000	1
LHS38W1	—	0.38 (9.7)	2.00 (50.8)	1	0.13 - 0.38 (3.0 - 9.7)	500	1
LHS38W2	—	0.38 (9.7)	1.00 (25.4)	2		1000	1
LHS50W1	LHS50Y1	0.50 (12.7)	2.00 (50.8)	1	0.17 - 0.50 (4.2 - 12.7)	500	1
LHS50W2	LHS50Y2	0.50 (12.7)	1.00 (25.4)	2		1000	1
LHS100W1	LHS100Y1	1.00 (25.4)	2.00 (50.8)	1	0.33 - 1.00 (8.4 - 25.4)	250	1
LHS100W2	LHS100Y2	1.00 (25.4)	1.00 (25.4)	2		500	1
Bulk Package Parts							
LHSB12W1	—	0.13 (3.2)	2.00 (50.8)	1	0.04 - 0.13 (1.1 - 3.2)	2500	1
LHSB12W2	—	0.13 (3.2)	1.00 (25.4)	2		5000	1
LHSB18W1	—	0.18 (4.8)	2.00 (50.8)	1	0.06 - 0.18 (1.6 - 4.8)	2500	1
LHSB18W2	—	0.18 (4.8)	1.00 (25.4)	2		5000	1
LHSB18W4	—	0.18 (4.8)	0.50 (12.7)	4		10,000	1
LHSB25W1	—	0.25 (6.4)	2.00 (50.8)	1	0.08 - 0.25 (2.1 - 6.4)	2500	1
LHSB25W2	—	0.25 (6.4)	1.00 (25.4)	2		5000	1

*Order number of rolls required in multiples of Std. Pkg. Qty.

Selecting the Correct Point Size

The chart below shows the Point Size to use based on the tubing diameter and lines of text desired

Diameter In. (mm)	Lines of Text					
	1 Line	2 Lines	3 Lines	4 Lines	5 Lines	6 Lines
0.13 (3.3)	12 pt	6 pt	—	—	—	—
0.18 (4.6)	18 pt	10 pt	6 pt	—	—	—
0.25 (6.4)	24 pt	12 pt	8 pt	6 pt	—	—
0.38 (9.7)	36 pt	18 pt	12 pt	10 pt	7 pt	6 pt
0.50 (12.7)	48 pt	24 pt	16 pt	12 pt	10 pt	8 pt
1.00 (25.4)	72 pt	48 pt	32 pt	24 pt	20 pt	16 pt

PANDUIT® PTR2E Component Labels

PTR2E Component Labels



- Sizes for electrical and electronic applications
- Available in several industrial materials
- Labels are provided on 3.0" (76.2mm) cores and must be rear fed from PTR2-RS External Roll Stand (see page 1).

Part Number	Width In. (mm)	Height In. (mm)	Material	Color	Labels Per Row	Roll Width In. (mm)	Std. Pkg. Qty.
TTC84C-2.5	0.25 (6.4)	1.44 (36.5)	Vinyl Cloth	White	7	2.40 (61.0)	2500
TTC58Y-10	0.31 (7.9)	0.31 (7.9)	Polyester	White	5	2.01 (51.1)	10,000
TTC-CPL-.5	0.33 (8.4)	0.61 (15.5)	Polyester	White	1	1.25 (31.8)	500
TTC2K-10	0.38 (9.5)	0.38 (9.5)	KAPTON* (Polyimide)	Tan	7	3.20 (81.3)	10,000
TTC2KW-10	0.38 (9.5)	0.38 (9.5)	KAPTON (Polyimide)	White	7	3.20 (81.3)	10,000
TTC2Y-10	0.38 (9.5)	0.38 (9.5)	Polyester	White	7	3.20 (81.3)	10,000
TTC47K-20	0.50 (12.7)	0.13 (3.2)	KAPTON (Polyimide)	Tan	5	3.10 (78.7)	20,000
TTC47KW-20	0.50 (12.7)	0.13 (3.2)	KAPTON (Polyimide)	White	5	3.10 (78.7)	20,000
TTC51Y-10	0.50 (12.7)	0.25 (6.4)	Polyester	White	5	3.34 (84.8)	10,000
TTC3K-10	0.50 (12.7)	0.44 (11.1)	KAPTON (Polyimide)	Tan	5	3.35 (85.1)	10,000
TTC3KW-10	0.50 (12.7)	0.44 (11.1)	KAPTON (Polyimide)	White	5	3.35 (85.1)	10,000
TTC3Y-10	0.50 (12.7)	0.44 (11.1)	Polyester	White	5	3.35 (85.1)	10,000
TTC3YS-10	0.50 (12.7)	0.44 (11.1)	Polyester	Silver	5	3.35 (85.1)	10,000
TTC3YST-10	0.50 (12.7)	0.44 (11.1)	Tamper Evident Polyester	Silver	5	3.35 (85.1)	10,000
TTC45Y-1	0.50 (12.7)	0.75 (19.1)	Polyester	White	3	1.90 (48.3)	1000
TTC45C-1	0.50 (12.7)	0.75 (19.1)	Vinyl Cloth	White	3	1.90 (48.3)	1000
TTC85C-2.5	0.50 (12.7)	1.44 (36.5)	Vinyl Cloth	White	7	4.15 (105.4)	2500
TTC-DS110-.5	0.50 (12.7)	7.88 (200.0)	Polyester	White	1	1.25 (31.8)	500
TTC81K-10	0.65 (16.5)	0.20 (5.1)	KAPTON (Polyimide)	Tan	3	2.25 (64.8)	10,000
TTC81KW-10	0.65 (16.5)	0.20 (5.1)	KAPTON (Polyimide)	White	3	2.25 (64.8)	10,000
TTC81Y-10	0.65 (16.5)	0.20 (5.1)	Polyester	White	3	2.25 (64.8)	10,000
TTC81YST-10	0.65 (16.5)	0.20 (5.1)	Tamper Evident Polyester	Silver	3	2.25 (64.8)	10,000
TTC81T-10	0.65 (16.5)	0.20 (5.1)	TEDLAR*	White	3	2.25 (64.8)	10,000
TTC81C-10	0.65 (16.5)	0.20 (5.1)	Vinyl Cloth	White	3	2.25 (64.8)	10,000
TTC82K-10	0.75 (19.1)	0.25 (6.4)	KAPTON (Polyimide)	Tan	3	2.55 (64.8)	10,000
TTC82KW-10	0.75 (19.1)	0.25 (6.4)	KAPTON (Polyimide)	White	3	2.55 (64.8)	10,000
TTC82Y-10	0.75 (19.1)	0.25 (6.4)	Polyester	White	3	2.55 (64.8)	10,000
TTC82YS-10	0.75 (19.1)	0.25 (6.4)	Polyester	Silver	3	2.55 (64.8)	10,000
TTC82YST-10	0.75 (19.1)	0.25 (6.4)	Tamper Evident Polyester	Silver	3	2.55 (64.8)	10,000
TTC82T-10	0.75 (19.1)	0.25 (6.4)	TEDLAR	White	3	2.55 (64.8)	10,000
TTC82C-10	0.75 (19.1)	0.25 (6.4)	Vinyl Cloth	White	3	2.55 (64.8)	10,000
TTC86C-10	0.79 (20.0)	0.31 (8.0)	Vinyl Cloth	White	3	2.71 (69.0)	10,000
TTC87C-2.5	0.80 (20.3)	1.44 (36.6)	Vinyl Cloth	White	3	2.75 (69.9)	2500
TTC6K-10	0.90 (22.9)	0.25 (6.4)	KAPTON (Polyimide)	Tan	3	3.35 (85.1)	10,000
TTC6KW-10	0.90 (22.9)	0.25 (6.4)	KAPTON (Polyimide)	White	3	3.35 (85.1)	10,000
TTC6Y-10	0.90 (22.9)	0.25 (6.4)	Polyester	White	3	3.35 (85.1)	10,000
TTC6T-10	0.90 (22.9)	0.25 (6.4)	TEDLAR	White	3	3.35 (85.1)	10,000

*KAPTON and TEDLAR are the registered trademarks of E.I. DuPont Co.

*Order number of labels required in multiples of Std. Pkg. Qty.

PANDUIT® PTR2E Component Labels

PTR2E Component Labels (cont.)

Part Number	Width In. (mm)	Height In. (mm)	Material	Color	Labels Per Row	Roll Width In. (mm)	Std. Pkg. Qty.
TTC49K-10	1.00 (25.4)	0.25 (6.4)	KAPTON* (Polyimide)	Tan	3	3.35 (85.1)	10,000
TTC49KW-10	1.00 (25.4)	0.25 (6.4)	KAPTON (Polyimide)	White	3	3.35 (85.1)	10,000
TTC7K-10	1.00 (25.4)	0.38 (9.5)	KAPTON (Polyimide)	Tan	3	3.35 (85.1)	10,000
TTC7KW-10	1.00 (25.4)	0.38 (9.5)	KAPTON (Polyimide)	White	3	3.35 (85.1)	10,000
TTC7Y-10	1.00 (25.4)	0.38 (9.5)	Polyester	White	3	3.35 (85.1)	10,000
TTC7YS-10	1.00 (25.4)	0.38 (9.5)	Polyester	Silver	3	3.35 (85.1)	10,000
TTC7C-10	1.00 (25.4)	0.38 (9.5)	Vinyl Cloth	White	3	3.35 (85.1)	10,000
TTC8K-10	1.00 (25.4)	0.50 (12.7)	KAPTON (Polyimide)	Tan	3	3.35 (85.1)	10,000
TTC8KW-10	1.00 (25.4)	0.50 (12.7)	KAPTON (Polyimide)	White	3	3.35 (85.1)	10,000
TTC8Y-10	1.00 (25.4)	0.50 (12.7)	Polyester	White	3	3.35 (85.1)	10,000
TTC8YC-10	1.00 (25.4)	0.50 (12.7)	Polyester	Clear	3	3.35 (85.1)	10,000
TTC8YS-10	1.00 (25.4)	0.50 (12.7)	Polyester	Silver	3	3.35 (85.1)	10,000
TTC8YST-10	1.00 (25.4)	0.50 (12.7)	Tamper Evident Polyester	Silver	3	3.35 (85.1)	10,000
TTC8T-10	1.00 (25.4)	0.50 (12.7)	TEDLAR*	White	3	3.35 (85.1)	10,000
TTC8C-10	1.00 (25.4)	0.50 (12.7)	Vinyl Cloth	White	3	3.35 (85.1)	10,000
TTC88C-10	1.00 (25.4)	0.75 (19.1)	Vinyl Cloth	White	3	3.35 (85.1)	10,000
TTC83Y-10	1.25 (31.8)	0.38 (9.5)	Polyester	White	1	1.45 (36.8)	10,000
TTC83T-10	1.25 (31.8)	0.38 (9.5)	TEDLAR	White	1	1.45 (36.8)	10,000
TTC-MJ-5	1.38 (35.1)	0.19 (4.8)	Polyester	Clear	1	1.58 (40.0)	5000
TTC-MJWH-5	1.38 (35.1)	0.19 (4.8)	Polyester	White	1	1.58 (40.0)	5000
TTC90C-10	1.50 (38.1)	0.25 (6.4)	Vinyl Cloth	White	1	1.70 (43.2)	10,000
TTC91C-10	1.50 (38.1)	0.75 (19.1)	Vinyl Cloth	White	1	1.70 (43.2)	10,000
TTC15P-2.5	1.50 (38.1)	1.00 (25.4)	Paper	White	1	1.75 (44.5)	2500
TTC15Y-2.5	1.50 (38.1)	1.00 (25.4)	Polyester	White	1	1.75 (44.5)	2500
TTC17Y-2.5	1.63 (41.3)	1.25 (31.8)	Polyester	White	1	2.20 (55.9)	2500
TTC52K-10	1.75 (44.5)	0.25 (6.4)	KAPTON (Polyimide)	Tan	1	1.95 (49.5)	10,000
TTC52KW-10	1.75 (44.5)	0.25 (6.4)	KAPTON (Polyimide)	White	1	1.95 (49.5)	10,000
TTC52Y-10	1.75 (44.6)	0.25 (6.4)	Polyester	White	1	1.95 (49.5)	10,000
TTC-EFPL-1	1.80 (45.7)	0.38 (9.5)	Polyester	White	1	2.00 (50.8)	1000
TTC-EFPLC-1	1.80 (45.7)	0.38 (9.5)	Polyester	Clear	1	2.00 (50.8)	1000
TTC18K-2.5	2.00 (50.8)	0.25 (6.4)	KAPTON (Polyimide)	Tan	1	2.20 (55.9)	2500
TTC18KW-2.5	2.00 (50.8)	0.25 (6.4)	KAPTON (Polyimide)	White	1	2.20 (55.9)	2500
TTC18Y-2.5	2.00 (50.8)	0.25 (6.4)	Polyester	White	1	2.20 (55.9)	2500
TTC57Y-10	2.00 (50.8)	0.38 (9.5)	Polyester	White	1	2.20 (55.9)	10,000
TTC57C-10	2.00 (50.8)	0.38 (9.5)	Vinyl Cloth	White	1	2.20 (55.9)	10,000
TTC19Y-2.5	2.00 (50.8)	0.50 (12.7)	Polyester	White	1	2.20 (55.9)	2500
TTC20P-2.5	2.00 (50.8)	1.00 (25.4)	Paper	White	1	2.20 (55.9)	2500
TTC20Y-2.5	2.00 (50.8)	1.00 (25.4)	Polyester	White	1	2.20 (55.9)	2500
TTC20YC-2.5	2.00 (50.8)	1.00 (25.4)	Polyester	Clear	1	2.20 (55.9)	2500
TTC20YS-2.5	2.00 (50.8)	1.00 (25.4)	Polyester	Silver	1	2.20 (55.9)	2500
TTC20YST-2.5	2.00 (50.8)	1.00 (25.4)	Tamper Evident Polyester	Silver	1	2.20 (55.9)	2500
TTC21P-2.5	2.00 (50.8)	1.25 (31.8)	Paper	White	1	2.20 (55.9)	2500
TTC73Y-5	2.60 (66.0)	0.34 (8.7)	Polyester	White	1	2.80 (71.1)	5000
TTC73YBU-5	2.60 (66.0)	0.34 (8.7)	Polyester	TIA Blue	1	2.80 (71.1)	5000
TTC73YGR-5	2.60 (66.0)	0.34 (8.7)	Polyester	TIA Green	1	2.80 (71.1)	5000
TTC73YIG-5	2.60 (66.0)	0.34 (8.7)	Polyester	TIA Gray	1	2.80 (71.1)	5000
TTC73YOR-5	2.60 (66.0)	0.34 (8.7)	Polyester	TIA Orange	1	2.80 (71.1)	5000
TTC73YYL-5	2.60 (66.0)	0.34 (8.7)	Polyester	TIA Yellow	1	2.80 (71.1)	5000
TTC22P-2.5	2.75 (69.9)	1.25 (31.8)	Paper	White	1	2.95 (74.9)	2500
TTC22Y-2.5	2.75 (69.9)	1.25 (31.8)	Polyester	White	1	2.95 (74.9)	2500
TTC22YS-2.5	2.75 (69.9)	1.25 (31.8)	Polyester	Silver	1	2.95 (74.9)	2500
TTC-EFPL10-1	2.90 (73.7)	0.30 (7.6)	Polyester	White	1	3.50 (88.9)	1000
TTC23K-2.5	3.00 (76.2)	0.25 (6.4)	KAPTON (Polyimide)	Tan	1	3.20 (81.3)	2500
TTC23KW-2.5	3.00 (76.2)	0.25 (6.4)	KAPTON (Polyimide)	White	1	3.20 (81.3)	2500
TTC23Y-2.5	3.00 (76.2)	0.25 (6.4)	Polyester	White	1	3.20 (81.3)	2500
TTC89C-10	3.00 (81.3)	0.38 (9.5)	Vinyl Cloth	White	1	3.20 (81.3)	10,000

Labels are roll mounted on 3.00" (76.2mm) core

*KAPTON and TEDLAR are the registered trademarks of E.I. DuPont Co.

*Order number of labels required in multiples of Std. Pkg. Qty.

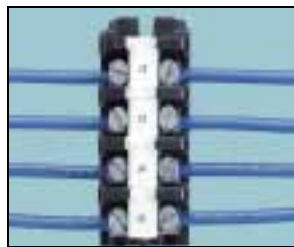
PANDUIT® PTR2E Component Labels

PTR2E Component Labels (cont.)

Part Number	Width In. (mm)	Height In. (mm)	Material	Color	Labels Per Row	Roll Width In. (mm)	Std. Pkg. Qty.
TTC46P-5	3.00 (76.2)	0.94 (23.8)	Paper	White	1	3.20 (81.3)	5000
TTC24P-2.5	3.00 (76.2)	1.00 (25.4)	Paper	White	1	3.20 (81.3)	2500
TTC24Y-2.5	3.00 (76.2)	1.00 (25.4)	Polyester	White	1	3.20 (81.3)	2500
TTC24YC-2.5	3.00 (76.2)	1.00 (25.4)	Polyester	Clear	1	3.20 (81.3)	2500
TTC24YS-2.5	3.00 (76.2)	1.00 (25.4)	Polyester	Silver	1	3.20 (81.3)	2500
TTC24YST-2.5	3.00 (76.2)	1.00 (25.4)	Tamper Evident Polyester	Silver	1	3.20 (81.3)	2500
TTC71P-2.5	3.00 (76.2)	1.75 (44.5)	Paper	White	1	3.20 (81.3)	2500
TTC71Y-2.5	3.00 (76.2)	1.75 (44.5)	Polyester	White	1	3.20 (81.3)	2500
TTC25P-1	3.00 (76.2)	2.00 (50.8)	Paper	White	1	3.20 (81.3)	1000
TTC25Y-1	3.00 (76.2)	2.00 (50.8)	Polyester	White	1	3.20 (81.3)	1000
TTC25YC-1	3.00 (76.2)	2.00 (50.8)	Polyester	Clear	1	3.20 (81.3)	1000
TTC25YS-1	3.00 (76.2)	2.00 (50.8)	Polyester	Silver	1	3.20 (81.3)	1000
TTC25YST-1	3.00 (76.2)	2.00 (50.8)	Tamper Evident Polyester	Silver	1	3.20 (81.3)	1000
TTC26P-1	3.00 (76.2)	5.00 (127)	Paper	White	1	3.20 (81.3)	1000
TTC27Y-10	3.25 (82.6)	0.31 (7.9)	Polyester	White	1	4.20 (106.7)	10,000
TTC28Y-10	3.25 (82.6)	0.50 (12.7)	Polyester	White	1	3.45 (87.6)	10,000
TTC29Y-5	3.25 (82.6)	0.63 (15.9)	Polyester	White	1	4.20 (106.7)	5000
TTC30Y-2.5	3.25 (82.6)	0.81 (20.6)	Polyester	White	1	4.20 (106.7)	2500
TTC31P-1	3.50 (88.9)	1.00 (25.4)	Paper	White	1	3.75 (95.3)	1000
TTC31Y-1	3.50 (88.9)	1.00 (25.4)	Polyester	White	1	3.75 (95.3)	1000
TTC32P-1	3.50 (88.9)	8.00 (203.2)	Paper	White	1	3.75 (95.3)	1000
TTC32Y-1	3.50 (88.9)	8.00 (203.2)	Polyester	White	1	3.75 (95.3)	1000
TTC34P-5	3.63 (92.1)	4.22 (107.1)	Paper	White	1	3.82 (97.2)	500
TTC33P-5	3.63 (92.1)	5.79 (147.1)	Paper	White	1	3.82 (97.2)	500
TTC35P-2.5	4.00 (101.6)	1.00 (25.4)	Paper	White	1	4.20 (106.7)	2500
TTC35Y-2.5	4.00 (101.6)	1.00 (25.4)	Polyester	White	1	4.20 (106.7)	2500
TTC36P-1	4.00 (101.6)	2.00 (50.8)	Paper	White	1	4.20 (106.7)	1000
TTC36Y-1	4.00 (101.6)	2.00 (50.8)	Polyester	White	1	4.20 (106.7)	1000
TTC36YS-1	4.00 (101.6)	2.00 (50.8)	Polyester	Silver	1	4.20 (106.7)	1000
TTC37P-1	4.00 (101.6)	3.00 (76.2)	Paper	White	1	4.20 (106.7)	1000
TTC37Y-1	4.00 (101.6)	3.00 (76.2)	Polyester	White	1	4.20 (106.7)	1000
TTC38P-1	4.00 (101.6)	4.00 (101.6)	Paper	White	1	4.20 (106.7)	1000
TTC38Y-1	4.00 (101.6)	4.00 (101.6)	Polyester	White	1	4.20 (106.7)	1000
TTC39P-1	4.00 (101.6)	5.00 (127)	Paper	White	1	4.20 (106.7)	1000
TTC39Y-1	4.00 (101.6)	5.00 (127)	Polyester	White	1	4.20 (106.7)	1000
TTC40P-1	4.00 (101.6)	6.00 (152.4)	Paper	White	1	4.20 (106.7)	1000
TTC40Y-1	4.00 (101.6)	6.00 (152.4)	Polyester	White	1	4.20 (106.7)	1000
TTC41P-1	4.00 (101.6)	6.50 (165.1)	Paper	White	1	4.20 (106.7)	1000
TTC41Y-1	4.00 (101.6)	6.50 (165.1)	Polyester	White	1	4.20 (106.7)	1000
TTC42P-5	4.00 (101.6)	12.88 (327)	Paper	White	1	4.20 (106.7)	500
TTC42Y-5	4.00 (101.6)	12.88 (327)	Polyester	White	1	4.20 (106.7)	500

Labels are roll mounted on 3.00" (76.2mm) core.

*Order number of labels required in multiples of Std. Pkg. Qty.



PTR2E Terminal Block Labels

- Used to make on-demand terminal block label strips
- Labels are on 3.0" (76.2mm) cores and must be rear fed from PTR2-RS external stand when used with the PTR2E Printer (see page 1)
- Use *PAN-MARK*® Labeling Software to align legends perfectly with termination points

Part Number	Width In. (mm)	Height In. (mm)	Material	Color	Labels Per Row	Roll Width In. (mm)	Std. Pkg. Qty.
TTC74POWH-C	0.24 (6.1)	100 ft (30.5 m)	Polyolefin	White	1	1.00 (25.4)	1
TTC75POWH-C	0.31 (7.9)	100 ft (30.5 m)	Polyolefin	White	1	1.00 (25.4)	1
TTC76POWH-C	0.38 (9.7)	100 ft (30.5 m)	Polyolefin	White	1	1.00 (25.4)	1

*Order number of rolls required in multiples of Std. Pkg. Qty.

PANDUIT® PTR2E Continuous Tapes



PTR2E Continuous Tapes and Overlaminates Rolls

- Available in two sizes
- Continuous rolls for printing and overlaminating available
- Rolls are supplied on 1.0" (25.4 mm) cores for use with the PTR2E Printer

Part Number	Roll Width In. (mm)	Roll Length Ft. (m)	Color	Material	Std. Pkg. Qty*
2" (50.8 mm) Wide Rolls					
TTP2-CLR	2.00 (50.8)	100 (30.5)	Clear	Polyester	1
TTV2-BLK	2.00 (50.8)	100 (30.5)	Black	Vinyl	
TTV2-BLU	2.00 (50.8)	100 (30.5)	Blue		
TTV2-BRN	2.00 (50.8)	100 (30.5)	Brown		
TTV2-GRY	2.00 (50.8)	100 (30.5)	Gray		
TTV2-GRN	2.00 (50.8)	100 (30.5)	Green		
TTV2-ORG	2.00 (50.8)	100 (30.5)	Orange		
TTV2-PUR	2.00 (50.8)	100 (30.5)	Purple		
TTV2-RED	2.00 (50.8)	100 (30.5)	Red		
TTV2-WHT	2.00 (50.8)	100 (30.5)	White		
TTV2-YEL	2.00 (50.8)	100 (30.5)	Yellow		
TTPA2-WHT	2.00 (50.8)	125 (38.1)	White	Paper	
TTP2-LAM	2.25 (57.1)	100 (30.5)	Clear	Polyester Overlaminates	
4" (101.6 mm) Wide Rolls					
TTP4-CLR	4.00 (101.6)	100 (30.5)	Clear	Polyester	1
TTV4-BLK	4.00 (101.6)	100 (30.5)	Black	Vinyl	
TTV4-BLU	4.00 (101.6)	100 (30.5)	Blue		
TTV4-BRN	4.00 (101.6)	100 (30.5)	Brown		
TTV4-GRY	4.00 (101.6)	100 (30.5)	Gray		
TTV4-GRN	4.00 (101.6)	100 (30.5)	Green		
TTV4-ORG	4.00 (101.6)	100 (30.5)	Orange		
TTV4-PUR	4.00 (101.6)	100 (30.5)	Purple		
TTV4-RED	4.00 (101.6)	100 (30.5)	Red		
TTV4-WHT	4.00 (101.6)	100 (30.5)	White		
TTV4-YEL	4.00 (101.6)	100 (30.5)	Yellow		
TTPA4-WHT	4.00 (101.6)	125 (38.1)	White	Paper	
TTP4-LAM	4.25 (108.0)	100 (30.5)	Clear	Polyester Overlaminates	

*Order number of rolls required in multiples of Std. Pkg. Qty

For a copy of PANDUIT product warranties, log on to www.panduit.com/warranty or contact your local authorized PANDUIT distributor.



PANDUIT CORP.
 Tinley Park, Illinois 60477-3091
 Customer Service: 800-777-3300
 Technical Support:
 (Labels and Safety): 866-405-6658
 (Software and Printers): 866-871-4571
 Email: id-support@panduit.com
 Internet: www.panduit.com/eg



Contact your local authorized PANDUIT distributor for pricing. For your local Sales Office call 888-506-5400

PANDUIT CANADA
 Markham, Ontario
 Phone: 800-777-3300

PANDUIT EUROPE LTD.
 London, UK
 Phone: 44 208-601-7200

PANDUIT SINGAPORE PTE. LTD.
 Republic of Singapore
 Phone: (65) 6379 6700

PANDUIT JAPAN
 Tokyo, Japan
 Phone (81) (3) 3767-7011

PANDUIT LATIN AMERICA
 Jalisco, Mexico
 Phone: (52) 3 666-2501

PANDUIT AUSTRALIA PTY. LTD.
 Victoria, Australia
 Phone: (61) 3-9794 9020