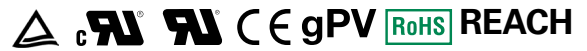


# POWR-GARD® Fuse

## SPXI SERIES IN-LINE SOLAR FUSE

1500 V dc • 1–60 A



### Description

The Littelfuse SPXI solar fuse is specifically designed for the protection of photovoltaic (PV) systems. It integrates into an in-line assembly within a wire harness and can be electrically insulated by either overmolding or using heat-shrink.

Littelfuse offers multiple ampere ratings to match specific requirements in a variety of applications.

### Features/Benefits

- Offers higher amperage protection in less space for increased design flexibility
- One-piece cap design, without joints, offers easier wire crimping and more streamlined molding
- No fuse holder required helps save space, time, and money
- 50,000 A interrupting rating

### Applications

- Photovoltaic high-capacity homerun, trunk harness, and wire harness

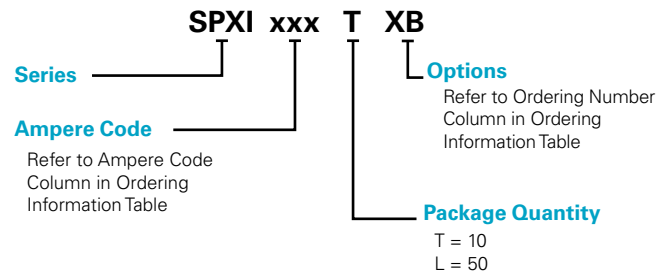
### Recommended Crimping Tool

10-12 AWG: T&B Sta-Kon ERG4002  
 8 AWG: T&B Sta-Kon ERG4  
 6 AWG: Burndy MRC840AL

### Specifications

|                             |  |
|-----------------------------|--|
| <b>Voltage Rating</b>       | 1500 V dc  |
| <b>Amperage Rating</b>      | 1, 2, 2.25, 2.5, 3, 3.5, 4, 4.5, 5, 6, 8, 10, 12, 15, 16, 20, 25, 30, 32, 35, 40, 45, 50, 55, 60 A                 |
| <b>Interrupting Ratings</b> | SPXI 1–20 A and SPXI-B 1–20 A: 30 kA<br>SPXI 35–50 A and SPXI-B 35–60 A: 50 kA<br>SPXI-M and SPXI-BM 25–32A: 50 kA |
| <b>Time Constant</b>        | ≤ 1ms  |
| <b>Material</b>             | Body: melamine<br>Caps: copper alloy (nickel plated)   |
| <b>Approvals</b>            | UL Recognized (File: E339112)<br>TUV (Cert: J 50495785)  |
| <b>Applicable Standards</b> | UL 248-1, 248-19<br>IEC 60269-6 (electrically only)  |
| <b>Environmental</b>        | RoHS Compliant<br>REACH  |
| <b>Country of Origin</b>    | Mexico   |
| <b>US Patent</b>            | 9,564,281  |

### Part Numbering System



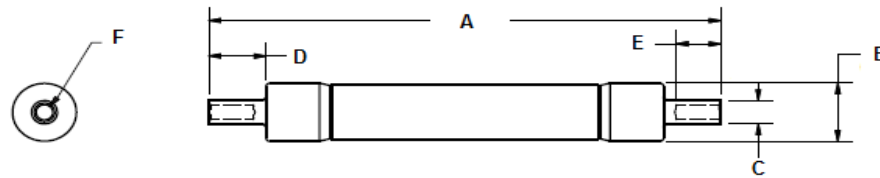
### Web Resources

Download additional technical information and view the complete solar portfolio: [Littelfuse.com/SPXI](http://Littelfuse.com/SPXI)

# POWR-GARD® Fuse

## SPXI SERIES IN-LINE SOLAR FUSE

### Dimensions

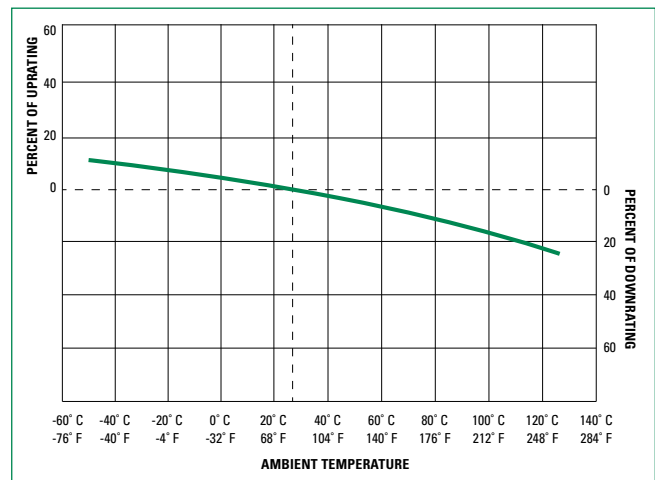


| SERIES  | AMPS   | DIMENSIONS IN MM (INCHES) |               |             |               |               |              | WIRE RANGE                          |
|---------|--------|---------------------------|---------------|-------------|---------------|---------------|--------------|-------------------------------------|
|         |        | A                         | B             | C           | D             | E             | F            |                                     |
| SPXI    | 1-4    | 81.41 (3.205)             | 10.31 (0.406) | 5.59 (0.22) | 12.26 (0.483) | 9.53 (0.375)  | 3.56 (0.14)  | 10-12 AWG<br>(6-4 mm <sup>2</sup> ) |
|         | 4.5-20 | 110.06 (4.333)            | 10.31 (0.406) | 5.59 (0.22) | 12.26 (0.483) | 9.53 (0.375)  | 3.56 (0.014) | 10-12 AWG<br>(6-4 mm <sup>2</sup> ) |
|         | 35-50  | 158.04 (6.222)            | 20.65 (0.813) | 6.7 (0.264) | 14.25 (0.561) | 10.25 (0.404) | 4.7 (0.185)  | 8 AWG<br>(10mm <sup>2</sup> )       |
| SPXI-B  | 1-4    | 85.4 (3.362)              | 10.31 (0.406) | 6.7 (0.264) | 14.25 (0.561) | 10.25 (0.404) | 4.7 (0.185)  | 8 AWG<br>(10mm <sup>2</sup> )       |
|         | 4.5-20 | 114.05 (4.49)             | 10.31 (0.406) | 6.7 (0.264) | 14.25 (0.561) | 10.25 (0.404) | 4.7 (0.185)  | 8 AWG<br>(10mm <sup>2</sup> )       |
|         | 35-60  | 163.58 (6.44)             | 20.65 (0.813) | 8.5 (0.335) | 17.02 (0.67)  | 13.72 (0.54)  | 5.5 (0.217)  | 6 AWG                               |
| SPXI-M  | 25-32  | 110.06 (4.333)            | 10.31 (0.406) | 5.59 (0.22) | 12.26 (0.483) | 9.53 (0.375)  | 3.56 (0.014) | 10-12 AWG<br>(6-4 mm <sup>2</sup> ) |
| SPXI-BM | 25-32  | 114.05 (4.49)             | 10.31 (0.406) | 6.7 (0.264) | 14.25 (0.561) | 10.25 (0.404) | 4.7 (0.185)  | 8 AWG<br>(10mm <sup>2</sup> )       |

### Electrical Specification — Agency Requirements

| AMPERAGE RATING |                           | OPENING TIME (MINUTES)         |                                 |                                |                                 |                                |
|-----------------|---------------------------|--------------------------------|---------------------------------|--------------------------------|---------------------------------|--------------------------------|
|                 |                           | 100 % of Amperes Rating per UL | 113 % of Amperes Rating per IEC | 135 % of Amperes Rating per UL | 145 % of Amperes Rating per IEC | 200 % of Amperes Rating per UL |
| 1-30            | Temperature Stabilization | 60 Min                         | 60 Max                          | 60 Max                         | 60 Max                          | 4 Max                          |
| 32-60           | Temperature Stabilization | 60 Min                         | 60 Max                          | 60 Max                         | 60 Max                          | 6 Max                          |

### Temperature Derating Curve (temperature of air immediately surrounding fuse)



# POWR-GARD® Fuse

## SPXI SERIES IN-LINE SOLAR FUSE

### SPXI and SPXI-M Ordering Information (Standard Crimp Barrel)

| SERIES | AMPERAGE | AMPERE CODE | CATALOG NUMBER | PRODUCT MARKING | PACK QUANTITY | ORDERING NUMBER | UPC         |
|--------|----------|-------------|----------------|-----------------|---------------|-----------------|-------------|
| SPXI   | 1        | 001.        | SPXI001        | SPXI 1 A        | 10            | SPXI001.T       | 07945827694 |
|        |          |             |                |                 | 50            | SPXI001.L       | 07945827686 |
| SPXI   | 2        | 002.        | SPXI002        | SPXI 2 A        | 10            | SPXI002.T       | 07945827695 |
|        |          |             |                |                 | 50            | SPXI002.L       | 07945827687 |
| SPXI   | 2.25     | 2.25        | SPXI2.25       | SPXI 2 ¼ A      | 10            | SPXI2.25T       | 07945827696 |
|        |          |             |                |                 | 50            | SPXI2.25L       | 07945827688 |
| SPXI   | 2.5      | 02.5        | SPXI02.5       | SPXI 2½ A       | 10            | SPXI02.5T       | 07945880950 |
|        |          |             |                |                 | 50            | SPXI02.5L       | 07945880949 |
| SPXI   | 3        | 003.        | SPXI003        | SPXI 3 A        | 10            | SPXI003.T       | 07945828565 |
|        |          |             |                |                 | 50            | SPXI003.L       | 07945828566 |
| SPXI   | 3.5      | 03.5        | SPXI03.5       | SPXI 3½ A       | 10            | SPXI03.5T       | 07945880808 |
|        |          |             |                |                 | 50            | SPXI03.5L       | 07945880149 |
| SPXI   | 4        | 004.        | SPXI004        | SPXI 4 A        | 10            | SPXI004.T       | 07945884508 |
|        |          |             |                |                 | 50            | SPXI004.L       | 07945884509 |
| SPXI   | 4.5      | 04.5        | SPXI04.5       | SPXI 4½ A       | 10            | SPXI04.5T       | 07945824324 |
|        |          |             |                |                 | 50            | SPXI04.5L       | 07945824325 |
| SPXI   | 5        | 005.        | SPXI005        | SPXI 5A         | 10            | SPXI005.T       | 07945823273 |
|        |          |             |                |                 | 50            | SPXI005.L       | 07945823274 |
| SPXI   | 6        | 006.        | SPXI006        | SPXI 6 A        | 10            | SPXI006.T       | 07945882658 |
|        |          |             |                |                 | 50            | SPXI006.L       | 07945882659 |
| SPXI   | 8        | 008.        | SPXI008        | SPXI 8 A        | 10            | SPXI008.T       | 07945882660 |
|        |          |             |                |                 | 50            | SPXI008.L       | 07945882661 |
| SPXI   | 10       | 010.        | SPXI010        | SPXI 10 A       | 10            | SPXI010.T       | 07945882662 |
|        |          |             |                |                 | 50            | SPXI010.L       | 07945882663 |
| SPXI   | 12       | 012.        | SPXI012        | SPXI 12 A       | 10            | SPXI012.T       | 07945882664 |
|        |          |             |                |                 | 50            | SPXI012.L       | 07945882665 |
| SPXI   | 15       | 015.        | SPXI015        | SPXI 15 A       | 10            | SPXI015.T       | 07945882666 |
|        |          |             |                |                 | 50            | SPXI015.L       | 07945882667 |
| SPXI   | 16       | 016.        | SPXI016        | SPXI 16 A       | 10            | SPXI016.T       | 07945827697 |
|        |          |             |                |                 | 50            | SPXI016.L       | 07945827689 |
| SPXI   | 20       | 020.        | SPXI020        | SPXI 20 A       | 10            | SPXI020.T       | 07945882556 |
|        |          |             |                |                 | 50            | SPXI020.L       | 07945882557 |
| SPXI-M | 25       | 025.        | SPXI025-M      | SPXI 25 A-M     | 10            | SPXI025.TXM     | 07945826360 |
|        |          |             |                |                 | 50            | SPXI025.LXM     | 07945826361 |
| SPXI-M | 30       | 030.        | SPXI030-M      | SPXI 30 A-M     | 10            | SPXI030.TXM     | 07945826362 |
|        |          |             |                |                 | 50            | SPXI030.LXM     | 07945826363 |
| SPXI-M | 32       | 032.        | SPXI032-M      | SPXI 32 A-M     | 10            | SPXI032.TXM     | 07945826364 |
|        |          |             |                |                 | 50            | SPXI032.LXM     | 07945826365 |
| SPXI   | 35       | 035.        | SPXI035        | SPXI 35A        | 10            | SPXI035.T       | 07945826379 |
| SPXI   | 40       | 040.        | SPXI040        | SPXI 40A        | 10            | SPXI040.T       | 07945826380 |
| SPXI   | 45       | 045.        | SPXI045        | SPXI 45A        | 10            | SPXI045.T       | 07945826381 |
| SPXI   | 50       | 050.        | SPXI050        | SPXI 50A        | 10            | SPXI050.T       | 07945826382 |

# POWR-GARD® Fuse

## SPXI SERIES IN-LINE SOLAR FUSE

### SPXI-B and SPXI-BM Ordering Information (Bigger Crimp Barrel)

| SERIES  | AMPERAGE | AMPERE CODE | CATALOG NUMBER | PRODUCT MARKING | PACK QUANTITY | ORDERING NUMBER | UPC         |
|---------|----------|-------------|----------------|-----------------|---------------|-----------------|-------------|
| SPXI-B  | 1        | 001.        | SPXI001-B      | SPXI 1 A-B      | 10            | SPXI001.TXB     | 07945827698 |
|         |          |             |                |                 | 50            | SPXI001.LXB     | 07945827690 |
| SPXI-B  | 2        | 002.        | SPXI002-B      | SPXI 2 A-B      | 10            | SPXI002.TXB     | 07945827699 |
|         |          |             |                |                 | 50            | SPXI002.LXB     | 07945827691 |
| SPXI-B  | 2.25     | 2.25        | SPXI2.25-B     | SPXI 2 ¼ A-B    | 10            | SPXI2.25TXB     | 07945827700 |
|         |          |             |                |                 | 50            | SPXI2.25LXB     | 07945827692 |
| SPXI-B  | 2.5      | 02.5        | SPXI02.5-B     | SPXI 2½ A-B     | 10            | SPXI02.5TXB     | 07945824341 |
|         |          |             |                |                 | 50            | SPXI02.5LXB     | 07945824354 |
| SPXI-B  | 3        | 003.        | SPXI003-B      | SPXI 3 A-B      | 10            | SPXI003.TXB     | 07945828567 |
|         |          |             |                |                 | 50            | SPXI003.LXB     | 07945828568 |
| SPXI-B  | 3.5      | 03.5        | SPXI03.5-B     | SPXI 3½ A-B     | 10            | SPXI03.5TXB     | 07945824342 |
|         |          |             |                |                 | 50            | SPXI03.5LXB     | 07945824355 |
| SPXI-B  | 4        | 004.        | SPXI004-B      | SPXI 4 A-B      | 10            | SPXI004.TXB     | 07945824343 |
|         |          |             |                |                 | 50            | SPXI004.LXB     | 07945824356 |
| SPXI-B  | 4.5      | 04.5        | SPXI04.5-B     | SPXI 4½ A-B     | 10            | SPXI04.5TXB     | 07945824344 |
|         |          |             |                |                 | 50            | SPXI04.5LXB     | 07945824357 |
| SPXI-B  | 5        | 005.        | SPXI005-B      | SPXI 5 A-B      | 10            | SPXI005.TXB     | 07945824345 |
|         |          |             |                |                 | 50            | SPXI005.LXB     | 07945824358 |
| SPXI-B  | 6        | 006.        | SPXI006-B      | SPXI 6 A-B      | 10            | SPXI006.TXB     | 07945824346 |
|         |          |             |                |                 | 50            | SPXI006.LXB     | 07945824359 |
| SPXI-B  | 8        | 008.        | SPXI008-B      | SPXI 8 A-B      | 10            | SPXI008.TXB     | 07945824347 |
|         |          |             |                |                 | 50            | SPXI008.LXB     | 07945824360 |
| SPXI-B  | 10       | 010.        | SPXI010-B      | SPXI 10 A-B     | 10            | SPXI010.TXB     | 07945824348 |
|         |          |             |                |                 | 50            | SPXI010.LXB     | 07945824361 |
| SPXI-B  | 12       | 012.        | SPXI012-B      | SPXI 12 A-B     | 10            | SPXI012.TXB     | 07945824349 |
|         |          |             |                |                 | 50            | SPXI012.LXB     | 07945824362 |
| SPXI-B  | 15       | 015.        | SPXI015-B      | SPXI 15 A-B     | 10            | SPXI015.TXB     | 07945824350 |
|         |          |             |                |                 | 50            | SPXI015.LXB     | 07945824363 |
| SPXI-B  | 16       | 016.        | SPXI016-B      | SPXI 16 A-B     | 10            | SPXI016.TXB     | 07945827706 |
|         |          |             |                |                 | 50            | SPXI016.LXB     | 07945827693 |
| SPXI-B  | 20       | 020.        | SPXI020-B      | SPXI 20 A-B     | 10            | SPXI020.TXB     | 07945824351 |
|         |          |             |                |                 | 50            | SPXI020.LXB     | 07945824364 |
| SPXI-BM | 25       | 025.        | SPXI025-BM     | SPXI 25 A-BM    | 10            | SPXI025.TXB     | 07945826366 |
|         |          |             |                |                 | 50            | SPXI025.LXB     | 07945826367 |
| SPXI-BM | 30       | 030.        | SPXI030-BM     | SPXI 30 A-BM    | 10            | SPXI030.TXB     | 07945826368 |
|         |          |             |                |                 | 50            | SPXI030.LXB     | 07945826369 |
| SPXI-BM | 32       | 032.        | SPXI032-BM     | SPXI 32 A-BM    | 10            | SPXI032.TXB     | 07945826370 |
|         |          |             |                |                 | 50            | SPXI032.LXB     | 07945826371 |
| SPXI-B  | 35       | 035.        | SPXI035-B      | SPXI 35A-B      | 10            | SPXI035.TXB     | 07945826383 |
| SPXI-B  | 40       | 040.        | SPXI040-B      | SPXI 40A-B      | 10            | SPXI040.TXB     | 07945826384 |
| SPXI-B  | 45       | 045.        | SPXI045-B      | SPXI 45A-B      | 10            | SPXI045.TXB     | 07945826385 |
| SPXI-B  | 50       | 050.        | SPXI050-B      | SPXI 50A-B      | 10            | SPXI050.TXB     | 07945826386 |
| SPXI-B  | 55       | 055.        | SPXI055-B      | SPXI 55A-B      | 10            | SPXI055.TXB     | 07945826387 |
| SPXI-B  | 60       | 060.        | SPXI060-B      | SPXI 60A-B      | 10            | SPXI060.TXB     | 07945826388 |

# POWR-GARD® Fuse

## SPXI SERIES IN-LINE SOLAR FUSE

### SPXI and SPXI-M Electrical Specifications (Standard Crimp Barrel)

| ORDERING NUMBER            | VOLTAGE | INTERRUPTING RATING | NOM COLD RESISTANCE (ohm) | WATTS LOSS AT 100 % RATED CURRENT (W) | WATTS LOSS AT 80 % RATED CURRENT (W) | MELTING I <sup>2</sup> t (A <sup>2</sup> s) (1500 V DC) | TOTAL CLEARING I <sup>2</sup> t (A <sup>2</sup> s) 15 kA (1500 V DC) | AGENCY APPROVALS |     |     |
|----------------------------|---------|---------------------|---------------------------|---------------------------------------|--------------------------------------|---|--|------------------|-----|-----|
|                            | DC      | DC                  |                           |                                       |                                      |   |  | UL               | cUL | TUV |
| SPXI001.T<br>SPXI001.L     | 1500    | 30 kA               | 0.625                     | 1.07                                  | 0.56                                 | 0.29  | 0.53   | •                | •   | •   |
| SPXI002.T<br>SPXI002.L     | 1500    | 30 kA               | 0.191                     | 1.32                                  | 0.70                                 | 1.55  | 5.13   | •                | •   | •   |
| SPXI2.25T<br>SPXI2.25L     | 1500    | 30 kA               | 0.125                     | 0.90                                  | 0.50                                 | 5.00  | 13   | •                | •   | •   |
| SPXI02.5T<br>SPXI02.5L     | 1500    | 30 kA               | 0.099                     | 0.86                                  | 0.48                                 | 7   | 16   | •                | •   | •   |
| SPXI003.T<br>SPXI003.L     | 1500    | 30 kA               | .0721                     | .92                                   | .51                                  | 14  | 40   | •                | •   | •   |
| SPXI03.5T<br>SPXI03.5L     | 1500    | 30 kA               | 0.0711                    | 1.56                                  | 0.81                                 | 25  | 50   | •                | •   | •   |
| SPXI004.T<br>SPXI004.L     | 1500    | 30 kA               | 0.0438                    | 0.95                                  | 0.54                                 | 57  | 95   | •                | •   | •   |
| SPXI04.5T<br>SPXI04.5L     | 1500    | 30 kA               | 0.1023                    | 2.81                                  | 1.61                                 | 34  | 55   | •                | •   | •   |
| SPXI005.T<br>SPXI005.L     | 1500    | 30kA                | 0.0760                    | 3.01                                  | 1.66                                 | 48  | 71   | •                | •   | •   |
| SPXI006.T<br>SPXI006.L     | 1500    | 30 kA               | 0.0576                    | 3.05                                  | 1.71                                 | 49  | 75   | •                | •   | •   |
| SPXI008.T<br>SPXI008.L     | 1500    | 30 kA               | 0.0349                    | 3.26                                  | 1.84                                 | 121   | 214  | •                | •   | •   |
| SPXI010.T<br>SPXI010.L     | 1500    | 30 kA               | 0.0223                    | 3.25                                  | 1.82                                 | 407   | 509  | •                | •   | •   |
| SPXI012.T<br>SPXI012.L     | 1500    | 30 kA               | 0.0163                    | 3.34                                  | 1.89                                 | 798   | 951  | •                | •   | •   |
| SPXI015.T<br>SPXI015.L     | 1500    | 30 kA               | 0.0131                    | 5.27                                  | 3.05                                 | 299   | 637  | •                | •   | •   |
| SPXI016.T<br>SPXI016.L     | 1500    | 30 kA               | 0.013                     | 5.32                                  | 3.08                                 | 404   | 666  | •                | •   | •   |
| SPXI020.T<br>SPXI020.L     | 1500    | 30 kA               | 0.0085                    | 5.38                                  | 3.14                                 | 701   | 1464   | •                | •   | •   |
| SPXI025.TXM<br>SPXI025.LXM | 1500    | 50 kA               | 0.00665                   | 5.8                                   | 3.2                                  | 2304  | 3255*  | •                | •   | •   |
| SPXI030.TXM<br>SPXI030.LXM | 1500    | 50 kA               | 0.00526                   | 6.8                                   | 3.8                                  | 3792  | 5543*  | •                | •   | •   |
| SPXI032.TXM<br>SPXI032.LXM | 1500    | 50 kA               | 0.00459                   | 6.9                                   | 3.8                                  | 4350  | 6654*  | •                | •   | •   |
| SPXI035.T                  | 1500    | 50 kA               | 0.00712                   | 14.02                                 | 7.85                                 | 257   | 1794*  | •                |     |     |
| SPXI040.T                  | 1500    | 50 kA               | 0.00548                   | 14.10                                 | 7.90                                 | 362   | 5726*  | •                |     |     |
| SPXI045.T                  | 1500    | 50 kA               | 0.00464                   | 14.75                                 | 8.26                                 | 588   | 5521*  | •                |     |     |
| SPXI050.T                  | 1500    | 50 kA               | 0.00415                   | 17.83                                 | 9.99                                 | 657   | 7058*  | •                |     |     |

\*Total Clearing I<sup>2</sup>t (A<sup>2</sup>s) 50 kA

# POWR-GARD® Fuse

## SPXI SERIES IN-LINE SOLAR FUSE

### SPXI-B and SPXI-BM Electrical Specifications (Bigger Crimp Barrel)

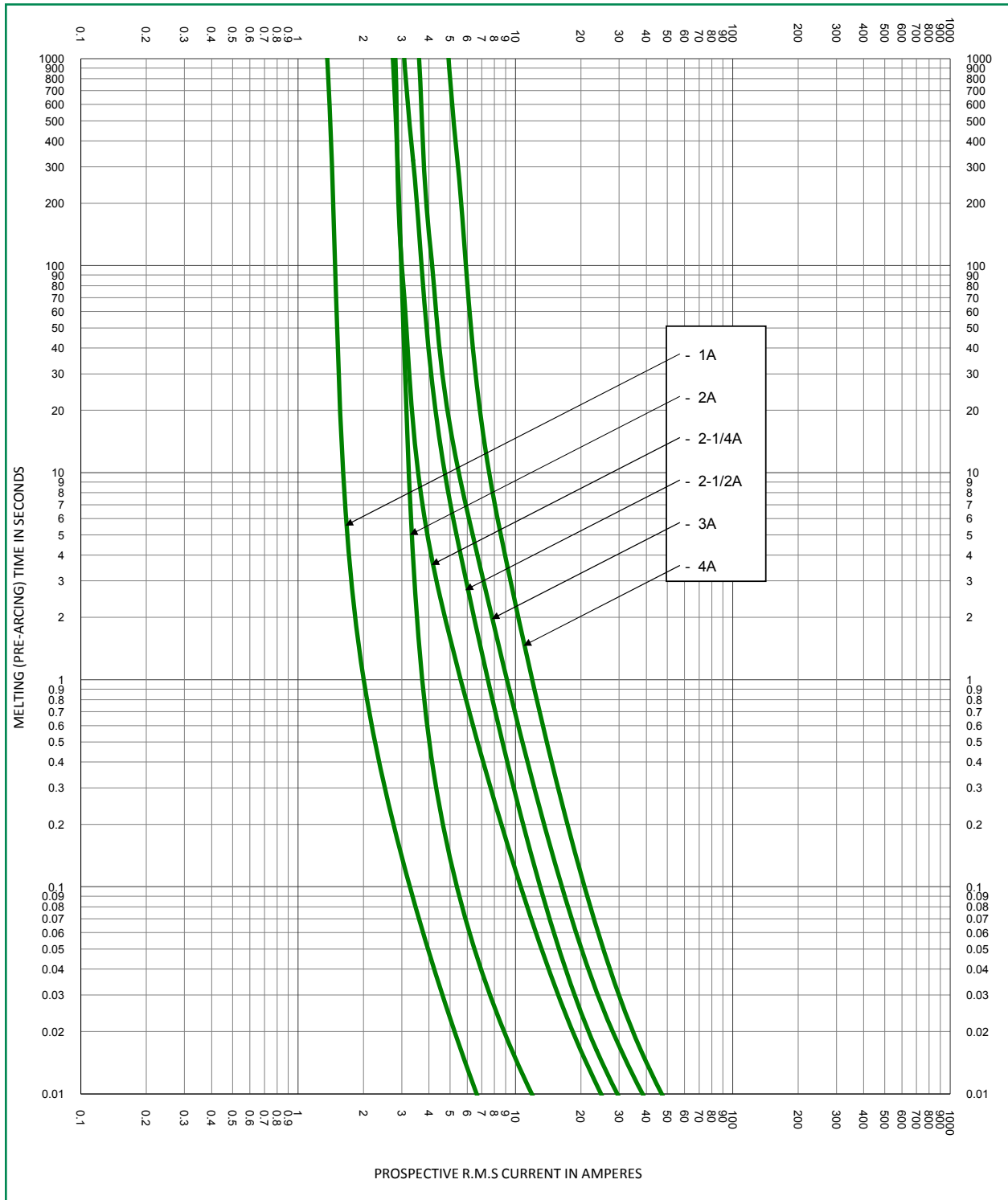
| ORDERING NUMBER              | VOLTAGE | INTERRUPTING RATING | NOM COLD RESISTANCE (ohm) | WATTS LOSS AT 100 % RATED CURRENT (W) | WATTS LOSS AT 80 % RATED CURRENT (W) | MELTING I <sup>2</sup> t (A <sup>2</sup> s) (1500 V DC) | TOTAL CLEARING I <sup>2</sup> t (A <sup>2</sup> s) 15 kA (1500 V DC) | AGENCY APPROVALS |     |
|------------------------------|---------|---------------------|---------------------------|---------------------------------------|--------------------------------------|---|--|------------------|-----|
|                              | DC      | DC                  |                           |                                       |                                      |   |  | UL               | TUV |
| SPXI001.TXB<br>SPXI001.LXB   | 1500    | 30 kA               | 0.625                     | 1.07                                  | 0.56                                 | 0.29  | 0.53   | •                | •   |
| SPXI002.TXB<br>SPXI002.LXB   | 1500    | 30 kA               | 0.191                     | 1.32                                  | 0.70                                 | 1.55  | 5.13   | •                | •   |
| SPXI2.25TXB<br>SPXI2.25LXB   | 1500    | 30 kA               | 0.125                     | 0.90                                  | 0.50                                 | 5   | 13   | •                | •   |
| SPXI02.5TXB<br>SPXI02.5LXB   | 1500    | 30 kA               | 0.099                     | 0.86                                  | 0.48                                 | 7   | 16   | •                | •   |
| SPXI003.TXB<br>SPXI003.LXB   | 1500    | 30 kA               | .0721                     | .92                                   | .51                                  | 14  | 40   | •                | •   |
| SPXI03.5TXB<br>SPXI03.5LXB   | 1500    | 30 kA               | 0.0711                    | 1.56                                  | 0.81                                 | 25  | 50   | •                | •   |
| SPXI004.TXB<br>SPXI004.LXB   | 1500    | 30 kA               | 0.0438                    | 0.95                                  | 0.56                                 | 57  | 95   | •                | •   |
| SPXI04.5TXB<br>SPXI04.5LXB   | 1500    | 30 kA               | 0.1023                    | 2.81                                  | 1.61                                 | 34  | 55   | •                | •   |
| SPXI005.TXB<br>SPXI005.LXB   | 1500    | 30kA                | 0.0760                    | 3.01                                  | 1.66                                 | 48  | 71   | •                | •   |
| SPXI006.TXB<br>SPXI006.LXB   | 1500    | 30 kA               | 0.0576                    | 3.05                                  | 1.71                                 | 49  | 75   | •                | •   |
| SPXI008.TXB<br>SPXI008.LXB   | 1500    | 30 kA               | 0.0349                    | 3.26                                  | 1.84                                 | 121   | 214  | •                | •   |
| SPXI010.TXB<br>SPXI010.LXB   | 1500    | 30 kA               | 0.0223                    | 3.25                                  | 1.82                                 | 407   | 509  | •                | •   |
| SPXI012.TXB<br>SPXI012.LXB   | 1500    | 30 kA               | 0.0163                    | 3.34                                  | 1.89                                 | 798   | 951  | •                | •   |
| SPXI015.TXB<br>SPXI015.LXB   | 1500    | 30 kA               | 0.0131                    | 5.27                                  | 3.05                                 | 299   | 637  | •                | •   |
| SPXI016.TXB<br>SPXI016.LXB   | 1500    | 30 kA               | 0.013                     | 5.32                                  | 3.08                                 | 404   | 666  | •                | •   |
| SPXI020.TXB<br>SPXI020.LXB   | 1500    | 30 kA               | 0.0085                    | 5.38                                  | 3.14                                 | 701   | 1464   | •                | •   |
| SPXI025.TXBM<br>SPXI025.LXBM | 1500    | 50 kA               | 0.00665                   | 5.9                                   | 3.3                                  | 2304  | 3256*  | •                | •   |
| SPXI030.TXBM<br>SPXI030.LXBM | 1500    | 50 kA               | 0.00526                   | 6.7                                   | 3.8                                  | 3792  | 5543*  | •                | •   |
| SPXI032.TXBM<br>SPXI032.LXBM | 1500    | 50 kA               | 0.00459                   | 7.0                                   | 3.9                                  | 4350  | 6655*  | •                | •   |
| SPXI035.TXB                  | 1500    | 50 kA               | 0.00735                   | 12.58                                 | 7.04                                 | 257   | 1794*  | •                |     |
| SPXI040.TXB                  | 1500    | 50 kA               | 0.00548                   | 13.50                                 | 7.56                                 | 362   | 5726*  | •                |     |
| SPXI045.TXB                  | 1500    | 50 kA               | 0.00458                   | 15.02                                 | 8.41                                 | 588   | 5521*  | •                |     |
| SPXI050.TXB                  | 1500    | 50 kA               | 0.00412                   | 16.75                                 | 9.38                                 | 657   | 7058*  | •                |     |
| SPXI055.TXB                  | 1500    | 50 kA               | 0.00365                   | 17.82                                 | 9.98                                 | 853   | 8783*  | •                |     |
| SPXI060.TXB                  | 1500    | 50 kA               | 0.00326                   | 21.02                                 | 11.77                                | 1030  | 11682*   | •                |     |

\*Total Clearing I<sup>2</sup>t (A<sup>2</sup>s) 50 kA

# POWR-GARD® Fuse

## SPXI SERIES IN-LINE SOLAR FUSE

### Time Current Curve SPXI and SPXI-B 1-4 A

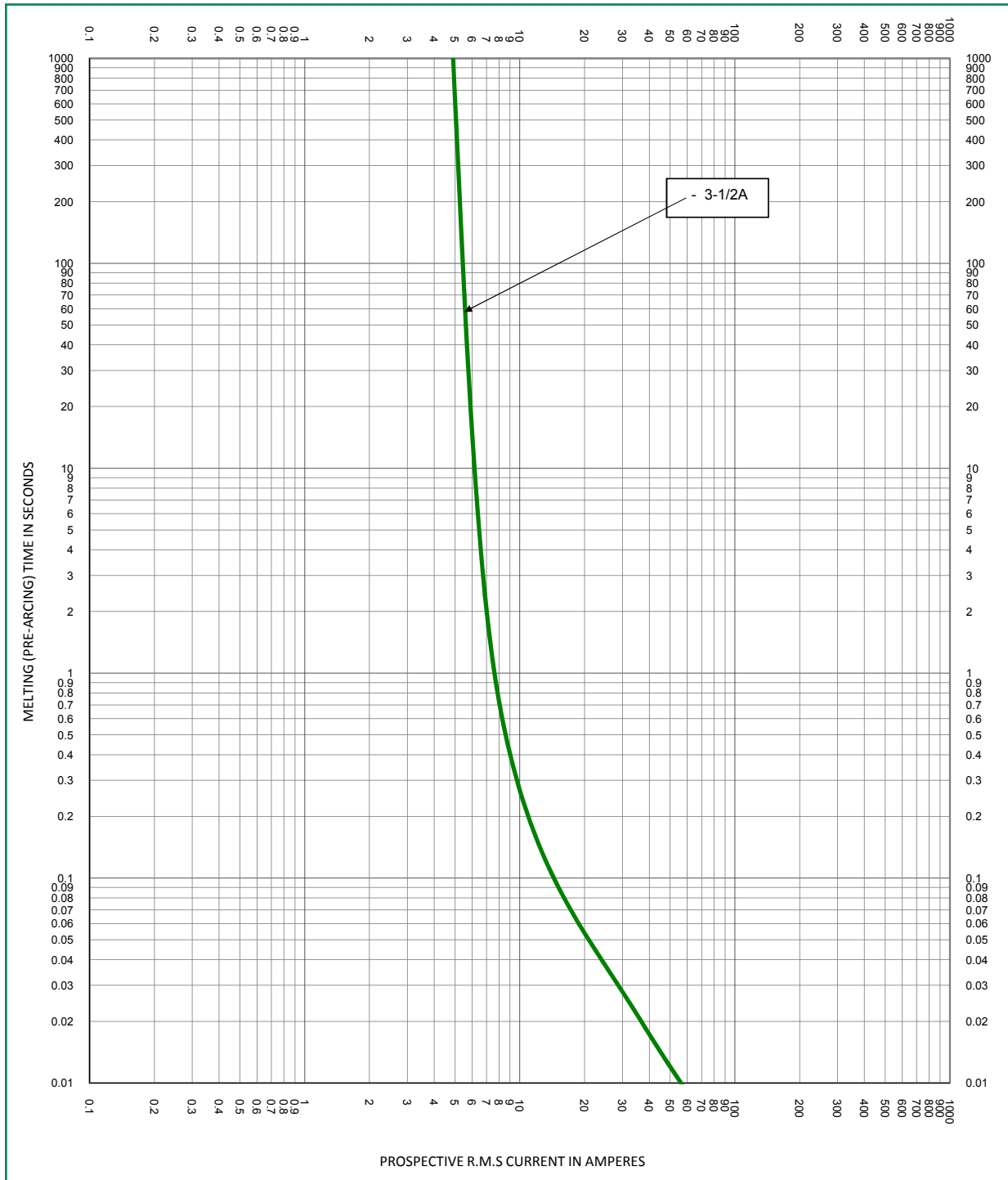


# POWR-GARD® Fuse

## SPXI SERIES IN-LINE SOLAR FUSE

### Time Current Curve

#### SPXI and SPXI-B 3 1/2 A



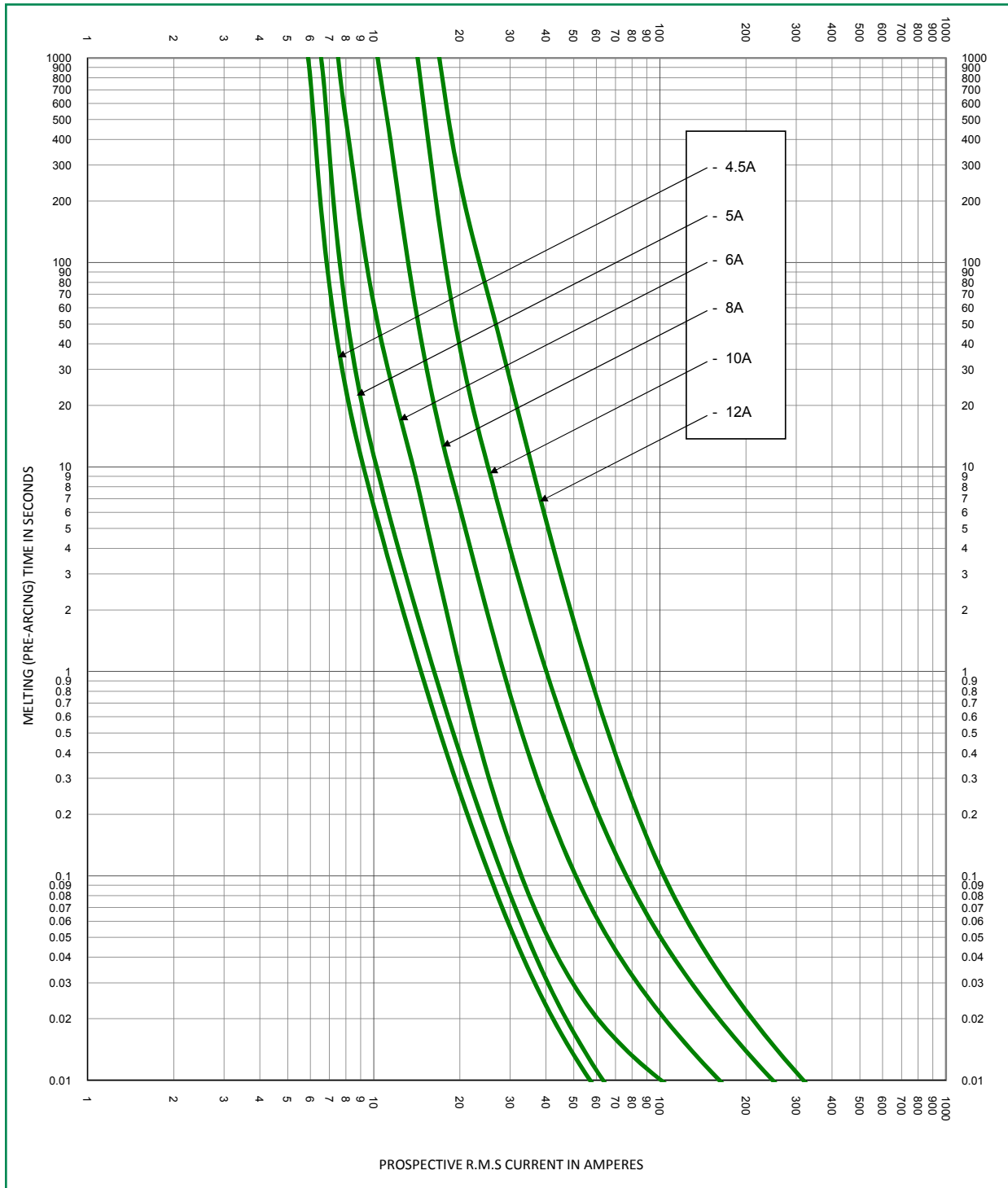


# POWR-GARD® Fuse

## SPXI SERIES IN-LINE SOLAR FUSE

### Time Current Curve

#### SPXI and SPXI-B 4.5–12 A

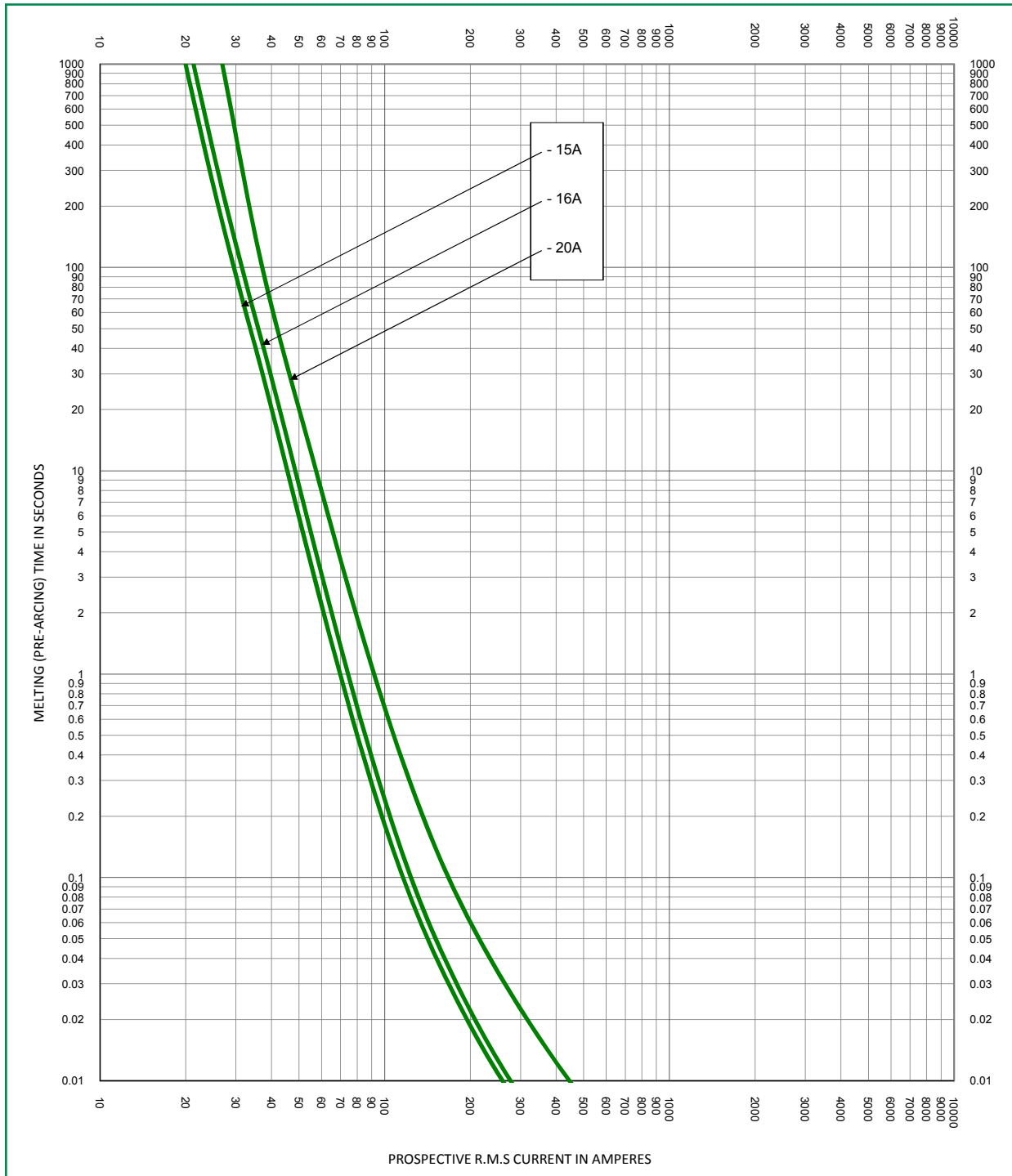


# POWR-GARD® Fuse

## SPXI SERIES IN-LINE SOLAR FUSE

### Time Current Curve

#### SPXI and SPXI-B 15-20 A

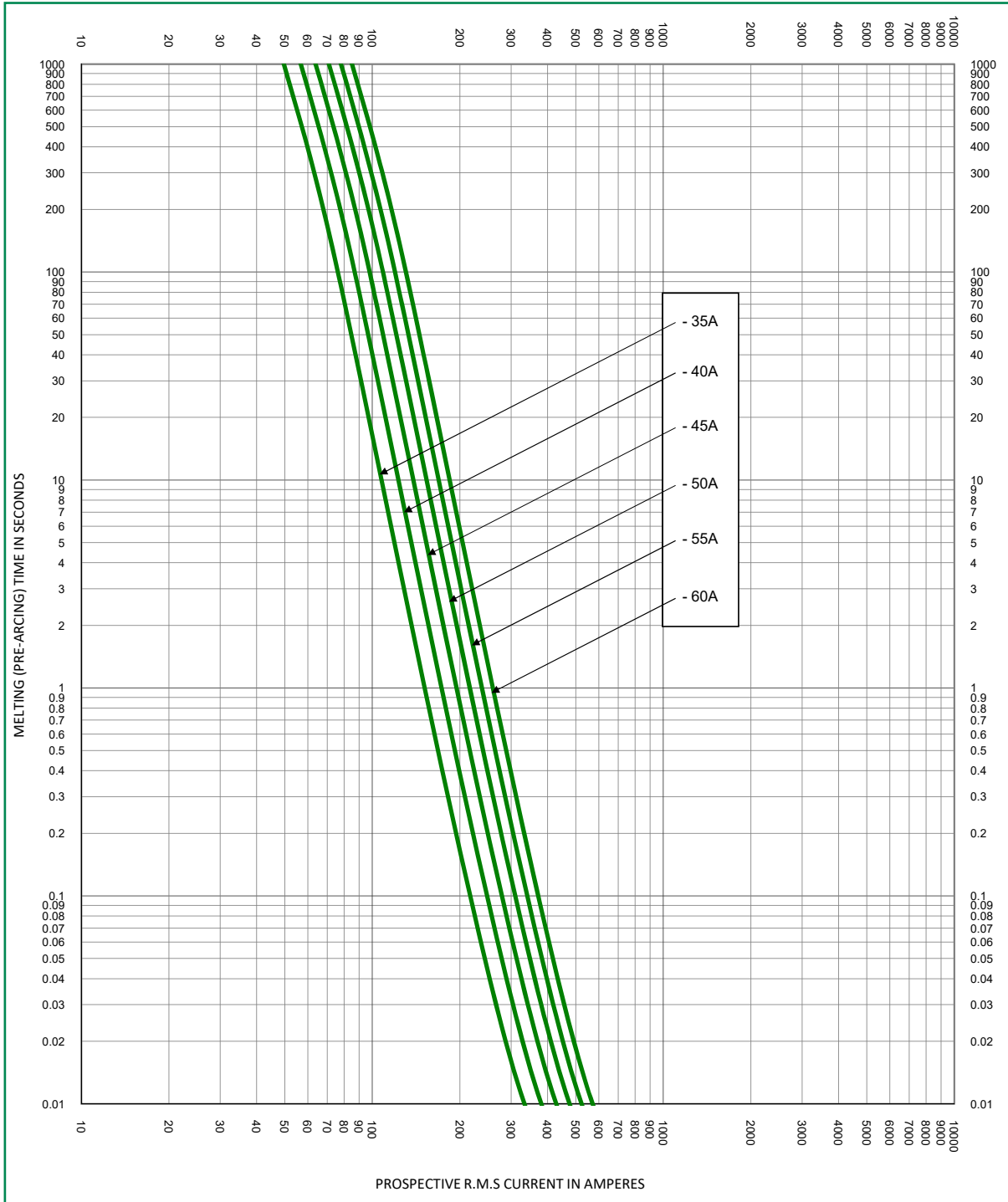


# POWR-GARD® Fuse

## SPXI SERIES IN-LINE SOLAR FUSE

### Time Current Curve

#### SPXI and SPXI-B 35–60 A

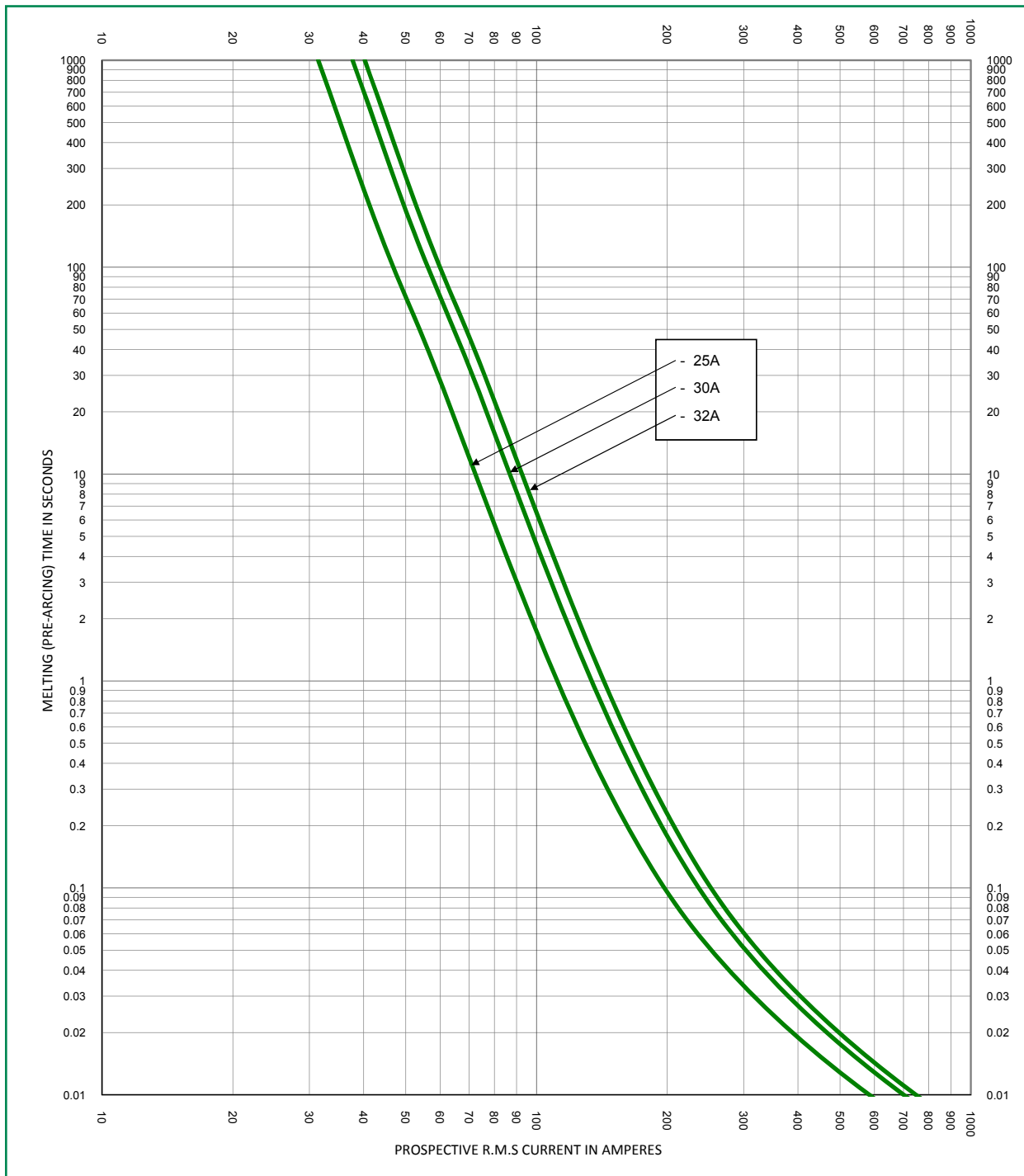


# POWR-GARD® Fuse

## SPXI SERIES IN-LINE SOLAR FUSE

### Time Current Curve

#### SPXI-M and SPXI-BM 25–32 A



**Disclaimer Notice** – Information furnished is believed to be accurate and reliable. However, users should independently evaluate the suitability of and test each product selected for their own applications. Littelfuse products are not designed for, and may not be used in, all applications. Read complete Disclaimer Notice at [www.littelfuse.com/product-disclaimer](http://www.littelfuse.com/product-disclaimer).