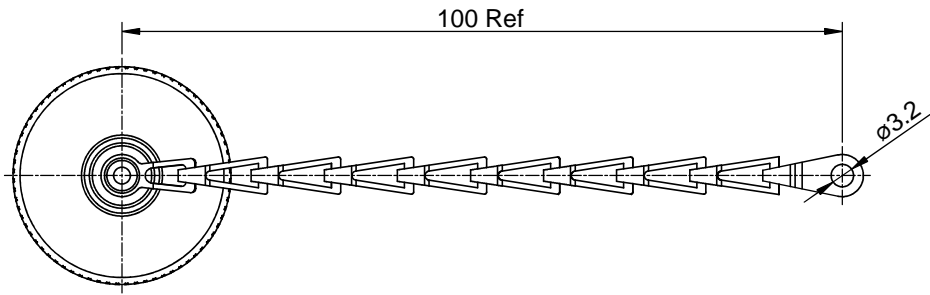
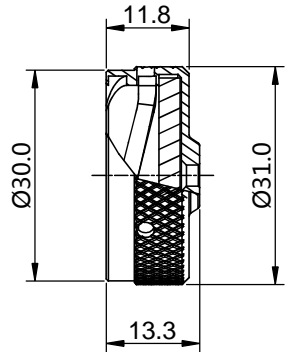


REVISIONS					
REV	ECO	DESCRIPTION	DATE	BY	APPR
B1	-	RELEASED DRAWING	JUN-23-2014	BEN	TOMMY



RT016DC X X
① ②

P/N	①	②	CHAIN	PLATING
RT016DC	---	---	NO CHAIN	NICKEL PLTING
RT016DCA	---	A	NO CHAIN	BLACK ANODIZING
RT016DCG	G	---	CHAIN	NICKEL PLTING
RT016DCGA	G	A	CHAIN	BLACK ANODIZING

NOTES : (UNLESS OTHERWISE SPECIFIED)

- MATERIAL :**
RIVET : COPPER ALLOY,NICKEL PLATING
CHAIN : STAINLESS STEEL.
DUST CAP : AL ALLOY , NICKEL PLATED.
O-RING : NBR.
- SPECIFICATIONS :**
 - OPERATING TEMPERATURE :** -40°C ~ +105°C.
 - IP--CLASS :** IP67.
 - MATING CYCLES DURABILITY :** 500 CYCLES MIN.
 - ROHS COMPLIANT.**
- ALL DIMENSIONS ARE FOR REFERENCE USE ONLY.**

SEE PART NUMBER CHART			
QUANTITY	PART NUMBER	DESCRIPTION	ITEM
MATERIALS LIST			
UNLESS OTHERWISE SPECIFIED 1) All dimensions are in metric(mm). 2) Tolerances are as follows: 1 PL DEC ±0.30 Fractions ±1/64 2 PL DEC ±0.15 Angles ±1° 3 PL DEC ±0.08 3) Note reference =		SIGNATURES	DATE
MATERIAL SPECIFICATIONS:		DRAWN: BEN	JUN-23-2014
PROCESS SPECIFICATIONS:		CHECKED:	ENGINEER:
NEXT ASSY:		APPROVAL:	CUSTOMER:
THIS DRAWING IS SUPPLIED FOR INFORMATION ONLY. DESIGN FEATURES, SPECIFICATIONS AND PERFORMANCE DATA SHOWN HEREON ARE THE PROPERTY OF THE AMPHENOL CORPORATION. NO RIGHTS OF REPRODUCTION ARE IMPLIED. ALL DIMENSIONS ARE SUBJECT TO NORMAL MANUFACTURING VARIATIONS.		Amphenol Sine Systems - www.amphenol-sine.com 44724 Morley Drive Clinton Township, MI 48036	
SIZE	TYPE	DWG NO.	REVISION
B	C-	RT016DCxx	B1
SCALE	NONE	SHEET 1 OF 1	

TITLE: ECO-MATE,DUSTCAP FOR RECEPTACLES SIZE 16
DWG NO: RT016DCXX
REV: B1
SH: 1
OF: 1