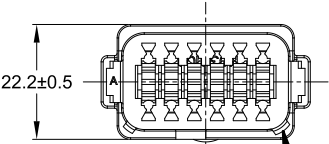
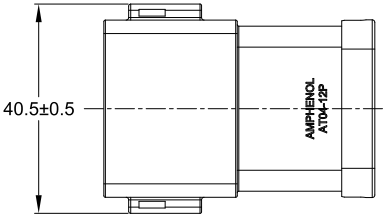
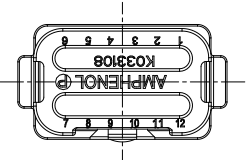
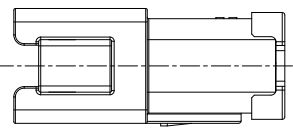


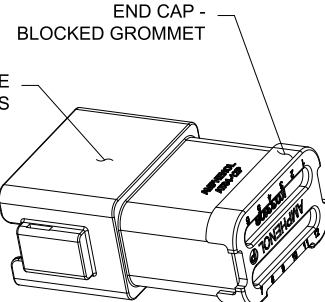
REVISIONS					
REV	ECO	DESCRIPTION	DATE	BY	APPR
A3	-	RELEASE NEW DRAWING FORMAT	03/JAN/14	ORION	-
A4	C1403S	UPDATE THE APPEARANCE	23/JUN/21	RONALD	TOMMY



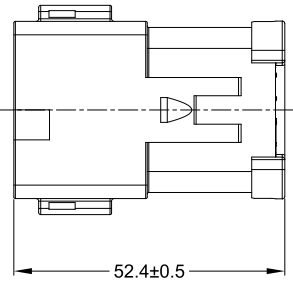
1 KEYWAY (3) PLACES



1 REFER TO SHEET 2 FOR AVAILABLE CONNECTOR HOUSING COLORS



END CAP - BLOCKED GROMMET



NOTES: UNLESS OTHERWISE SPECIFIED

1 SEE SHEET 2 FOR KEY ARRANGEMENTS AND COLORS.

2. MATERIAL:  
HOUSING: THERMOPLASTIC  
SEAL: SILICONE RUBBER

3. MODIFICATIONS: BLOCKED GROMMET

4. SPECIFICATIONS:
- 4.1 CURRENT RATING: 13 AMPS
  - 4.2 OPERATING TEMPERATURE: -55°C TO +125°C
  - 4.3 DIELECTRIC WITHSTANDING VOLTAGE: LESS THAN 2 MILLIAMPS CURRENT LEAKAGE @ 1500 VOLTS AC.
  - 4.4 INSULATION RESISTANCE: 1000 MEGOHMS MIN @ 25°C.
  - 4.5 MOISTURE RESISTANCE: IP69K & IP68 (1M OF WATER FOR A PERIOD OF 24 HOURS, MATED CONDITION)
  - 4.6 MATING CYCLE DURABILITY: 100 CYCLES
  - 4.7 RoHS COMPLIANT

5. MATING PART: AT06-12SX\* PLUG  
( X = A,B,C,D KEYS; \* = MODIFICATIONS AND COLORS )

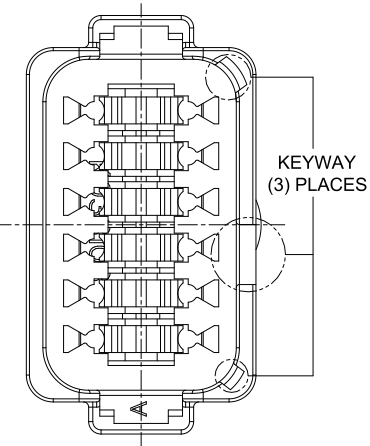
6. ALL DIMENSIONS ARE FOR REFERENCE USE ONLY.

SEE SHEET 2		DESCRIPTION		ITEM
PART NUMBER		DESCRIPTION		ITEM
QUANTITY	MATERIALS LIST			
UNLESS OTHERWISE SPECIFIED		SIGNATURES		DATE
1) All dimensions are in metric(mm).		DRAWN: RONALD		23/JUN/21
2) Tolerances are as follows:		CHECKED: ORION		24/JUN/21
1 PL DEC ±0.30		ENGINEER:		
2 PL DEC ±0.15		APPROVAL: TOMMY		25/JUN/21
3 PL DEC ±0.08		CUSTOMER:		
3) Note reference = 1		THIS DRAWING IS SUPPLIED FOR INFORMATION ONLY. DESIGN FEATURES, SPECIFICATIONS AND PERFORMANCE DATA SHOWN HEREON ARE THE PROPERTY OF THE AMPHENOL CORPORATION. NO RIGHTS OF REPRODUCTION ARE IMPLIED. ALL DIMENSIONS ARE SUBJECT TO NORMAL MANUFACTURING VARIATIONS.		
MATERIAL SPECIFICATIONS:		WEIGHT: 22.2g		
PROCESS SPECIFICATIONS:		NEXT ASSY:		
SIZE		TYPE	DWG NO.	REVISION
B		C-	AT04-12PX-SSXXX	A4
SCALE: NONE		SHEET 1 OF 2		

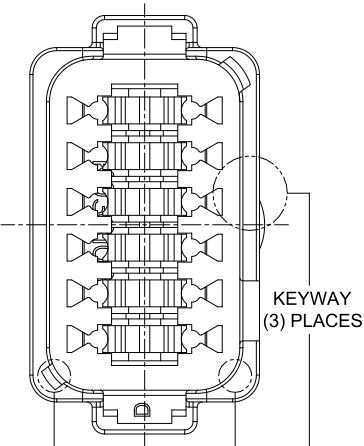
TITLE: RECEPTACLE 12 PIN AT SERIES KEYED BLOCKED GROMMET DWG NO: AT04-12PX-SSXXX REV: A4 SH: 1 OF: 2

REVISIONS					
REV	ECO	DESCRIPTION	DATE	BY	APPR
A3	-	RELEASE NEW DRAWING FORMAT	03/JAN/14	ORION	-
A4	C1403S	UPDATE THE APPEARANCE	23/JUN/21	RONALD	TOMMY

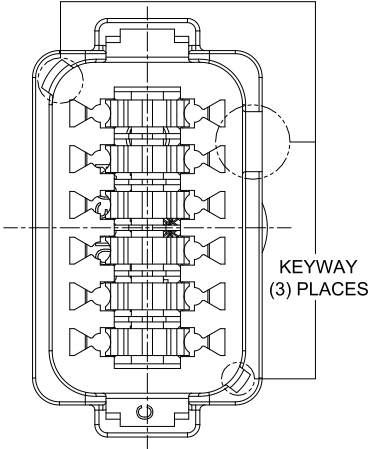
P/N AT04-12PA-SS01  
KEY-A CONFIGURATION  
STANDARD COLOR: GREY



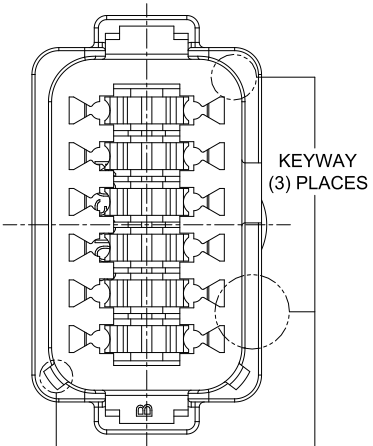
P/N AT04-12PB-SS01  
KEY-B CONFIGURATION  
STANDARD COLOR: BLACK



P/N AT04-12PC-SS01  
KEY-C CONFIGURATION  
STANDARD COLOR: GREEN



P/N AT04-12PD-SS01  
KEY-D CONFIGURATION  
STANDARD COLOR: BROWN



KEY-A CONFIGURATION	
COLOR	PART NUMBER
<b>* GREY</b>	<b>AT04-12PA-SS01</b>
BLACK	AT04-12PA-SSBLK
GREEN	AT04-12PA-SSGRN
BROWN	AT04-12PA-SSBRN

KEY-B CONFIGURATION	
COLOR	PART NUMBER
GREY	AT04-12PB-SSGRY
<b>* BLACK</b>	<b>AT04-12PB-SS01</b>
GREEN	AT04-12PB-SSGRN
BROWN	AT04-12PB-SSBRN

KEY-C CONFIGURATION	
COLOR	PART NUMBER
GREY	AT04-12PC-SSGRY
BLACK	AT04-12PC-SSBLK
<b>* GREEN</b>	<b>AT04-12PC-SS01</b>
BROWN	AT04-12PC-SSBRN

KEY-D CONFIGURATION	
COLOR	PART NUMBER
GREY	AT04-12PD-SSGRY
BLACK	AT04-12PD-SSBLK
GREEN	AT04-12PD-SSGRN
<b>* BROWN</b>	<b>AT04-12PD-SS01</b>

NOTE:

AN ASTERISKS ( \* ) PLACED BEFORE THE COLOR DENOTES THE STANDARD MOLDED COLOR OF THE CONNECTORS SHOWN ABOVE. STRAIN RELIEF END CAPS ARE AVAILABLE IN BLACK ONLY.

OTHER COLORS SHOWN ARE AVAILABLE VIA SPECIAL ORDER.

SEE SHEET 2		DESCRIPTION		ITEM
PART NUMBER				
MATERIALS LIST				
QUANTITY				
UNLESS OTHERWISE SPECIFIED		SIGNATURES		DATE
1) All dimensions are in metric(mm).		DRAWN: RONALD		23/JUN/21
2) Tolerances are as follows:		CHECKED: ORION		24/JUN/21
1 PL DEC ±0.30   Fractions ±1/64		ENGINEER:		
2 PL DEC ±0.15		APPROVAL: TOMMY		25/JUN/21
3 PL DEC ±0.08		CUSTOMER:		
3) Note reference =		THIS DRAWING IS SUPPLIED FOR INFORMATION ONLY. DESIGN FEATURES, SPECIFICATIONS AND PERFORMANCE DATA SHOWN HEREON ARE THE PROPERTY OF THE AMPHENOL CORPORATION. NO RIGHTS OF REPRODUCTION ARE IMPLIED. ALL DIMENSIONS ARE SUBJECT TO NORMAL MANUFACTURING VARIATIONS.		
MATERIAL SPECIFICATIONS:		WEIGHT:22.2g		
PROCESS SPECIFICATIONS:		NEXT ASSY:		
		SIZE		REVISION
		B C-		A4
		DWG NO: AT04-12PX-SSXXX		
		SCALE: NONE		SHEET 2 OF 2

**Amphenol**  
Sine Systems - www.amphenol-sine.com  
44724 Morley Drive  
Clinton Township, MI 48036

RECEPTACLE, 12 PIN, AT SERIES,  
KEYED, BLOCKED GROMMET

TITLE: RECEPTACLE 12 PIN AT SERIES KEYED BLOCKED GROMMET  
DWG NO: AT04-12PX-SSXXX  
REV: A4  
SH: 2  
OF: 2