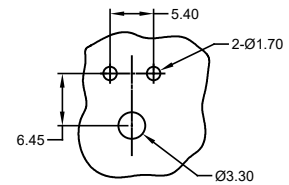
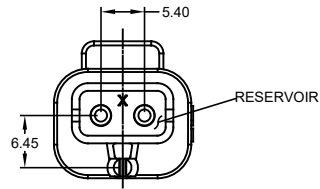
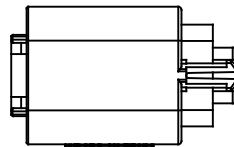
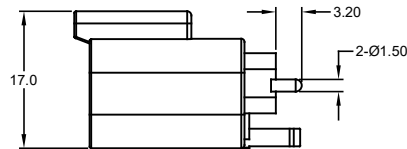
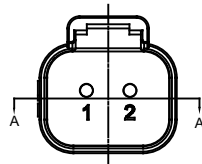
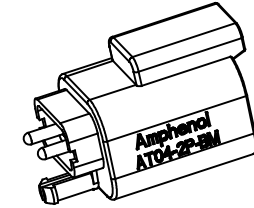


SECTION A-A



RECOMMENDED LAYOUT
VIEW FROM COMPONENTS
SIDE OF PCB



NOTES: UNLESS OTHERWISE SPECIFIED

1. MATERIAL:
HOUSING: THERMOPLASTIC; COLOR: BLACK
CONTACT: COPPER ALLOY
2. MODIFICATIONS: PCB MOUNT
3. SPECIFICATIONS:
 - 3.1 CURRENT RATING: 13 AMPS
 - 3.2 OPERATING TEMPERATURE: -55°C TO +125°C
 - 3.3 DIELECTRIC WITHSTANDING VOLTAGE: LESS THAN 2 MILLIAMPS CURRENT LEAKAGE @ 1500 VOLTS AC.
 - 3.4 INSULATION RESISTANCE: 1000 MEGOHMS MIN @ 25°C.
 - 3.5 MOISTURE RESISTANCE: IP67 (MATED CONDITION)
 - 3.6 MATING CYCLE DURABILITY: 100 CYCLES
 - 3.7 RoHS COMPLIANT
4. MATING PART: AT06-2S* PLUG (* = MODIFICATIONS AND COLORS)
5. ALL DIMENSIONS ARE FOR REFERENCE USE ONLY.
6. POTTED CONNECTORS SPECIFIED FOR UP TO 5 P.S.I. APPLICATIONS.

AT04-2P-BMXX VARIANTS		
CONTACT PLATING	POTTING OR NOT IN RESERVOIR	PART NUMBER
GOLD	NO POTTING	AT04-2P-BM01
GOLD	POTTING	AT04-2P-BM02
NICKEL	NO POTTING	AT04-2P-BM03
NICKEL	POTTING	AT04-2P-BM04

REVISIONS					
REV	ECO	DESCRIPTION	DATE	BY	APPR
A1	-	RELEASE NUMBER	SEP/24/14	ORION	
A2	-	UPDATE DRAWING	OCT/06/14	JARRY	
A3	-	ADD NICKEL PLATING VERSION	APR/24/15	ORION	
A4	-	CHANGE PC TAIL LENGTH	AUG/04/15	ORION	TOMMY
A5	-	REMOVE A DIMENSION AND ADD COLOR	AUG/10/15	ORION	TOMMY
A6	-	REVISE DRAWING	10JUL20	JHEAD	DH

SEE PART NUMBER CHART																																															
PART NUMBER		DESCRIPTION																																													
ITEM		ITEM																																													
<table border="1"> <thead> <tr> <th>QUANTITY</th> <th colspan="3">MATERIALS LIST</th> </tr> </thead> <tbody> <tr> <td>UNLESS OTHERWISE SPECIFIED</td> <td colspan="3">SIGNATURES</td> </tr> <tr> <td>1) All dimensions are in metric (mm).</td> <td>DRAWN: ORION LI</td> <td colspan="2">DATE: SEP/24/14</td> </tr> <tr> <td>2) Tolerances are as follows:</td> <td>CHECKED:</td> <td colspan="2"></td> </tr> <tr> <td>1 PL DEC ±0.30 Fractions ±1/64</td> <td>ENGINEER:</td> <td colspan="2"></td> </tr> <tr> <td>2 PL DEC ±0.15 Angles ±1°</td> <td>APPROVAL: TOMMY XIE</td> <td colspan="2">DATE: SEP/24/14</td> </tr> <tr> <td>3 PL DEC ±0.08</td> <td>CUSTOMER:</td> <td colspan="2"></td> </tr> <tr> <td>3) Note reference = </td> <td colspan="3">THIS DRAWING IS SUPPLIED FOR INFORMATION ONLY. DESIGN FEATURES, SPECIFICATIONS AND PERFORMANCE DATA SHOWN HEREON ARE THE PROPERTY OF THE AMPHENOL CORPORATION. NO RIGHTS OF REPRODUCTION ARE IMPLIED. ALL DIMENSIONS ARE SUBJECT TO NORMAL MANUFACTURING VARIATIONS.</td> </tr> <tr> <td>MATERIAL SPECIFICATIONS:</td> <td colspan="3">SCALE: NONE</td> </tr> <tr> <td>PROCESS SPECIFICATIONS:</td> <td>SIZE: B</td> <td>TYPE: C-</td> <td>DWG NO: AT04-2P-BMXX</td> </tr> <tr> <td>NEXT ASSY:</td> <td colspan="2">REVISION: A6</td> <td>SHEET 1 OF 1</td> </tr> </tbody> </table>				QUANTITY	MATERIALS LIST			UNLESS OTHERWISE SPECIFIED	SIGNATURES			1) All dimensions are in metric (mm).	DRAWN: ORION LI	DATE: SEP/24/14		2) Tolerances are as follows:	CHECKED:			1 PL DEC ±0.30 Fractions ±1/64	ENGINEER:			2 PL DEC ±0.15 Angles ±1°	APPROVAL: TOMMY XIE	DATE: SEP/24/14		3 PL DEC ±0.08	CUSTOMER:			3) Note reference =	THIS DRAWING IS SUPPLIED FOR INFORMATION ONLY. DESIGN FEATURES, SPECIFICATIONS AND PERFORMANCE DATA SHOWN HEREON ARE THE PROPERTY OF THE AMPHENOL CORPORATION. NO RIGHTS OF REPRODUCTION ARE IMPLIED. ALL DIMENSIONS ARE SUBJECT TO NORMAL MANUFACTURING VARIATIONS.			MATERIAL SPECIFICATIONS:	SCALE: NONE			PROCESS SPECIFICATIONS:	SIZE: B	TYPE: C-	DWG NO: AT04-2P-BMXX	NEXT ASSY:	REVISION: A6		SHEET 1 OF 1
QUANTITY	MATERIALS LIST																																														
UNLESS OTHERWISE SPECIFIED	SIGNATURES																																														
1) All dimensions are in metric (mm).	DRAWN: ORION LI	DATE: SEP/24/14																																													
2) Tolerances are as follows:	CHECKED:																																														
1 PL DEC ±0.30 Fractions ±1/64	ENGINEER:																																														
2 PL DEC ±0.15 Angles ±1°	APPROVAL: TOMMY XIE	DATE: SEP/24/14																																													
3 PL DEC ±0.08	CUSTOMER:																																														
3) Note reference =	THIS DRAWING IS SUPPLIED FOR INFORMATION ONLY. DESIGN FEATURES, SPECIFICATIONS AND PERFORMANCE DATA SHOWN HEREON ARE THE PROPERTY OF THE AMPHENOL CORPORATION. NO RIGHTS OF REPRODUCTION ARE IMPLIED. ALL DIMENSIONS ARE SUBJECT TO NORMAL MANUFACTURING VARIATIONS.																																														
MATERIAL SPECIFICATIONS:	SCALE: NONE																																														
PROCESS SPECIFICATIONS:	SIZE: B	TYPE: C-	DWG NO: AT04-2P-BMXX																																												
NEXT ASSY:	REVISION: A6		SHEET 1 OF 1																																												
<p style="text-align: center;">Amphenol</p> <p style="text-align: center;">Sine Systems - www.amphenol-sine.com 44724 Motley Drive Clinton Township, MI 48036</p> <p style="text-align: center;">BOARDLOCK PCB MOUNT RECEPTACLE, 2 PIN, STRAIGHT, A SERIES</p>																																															

TITLE: PCB MOUNT RECEPTACLE, 2 PIN, STRAIGHT, A SERIES
DWG NO: AT04-2P-BMXX
REV: A6
SHEET 1 OF 1