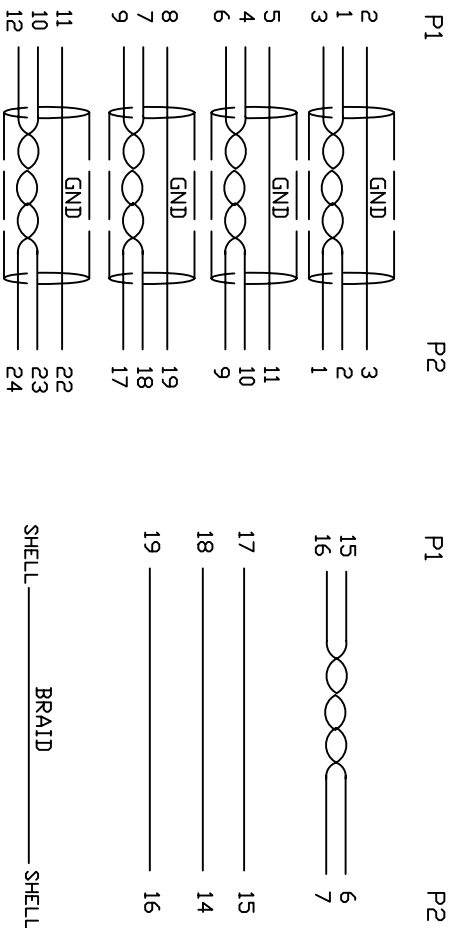


1. Wiring Diagram.



8	SCREW	#4-40UNC RE32±0.2mm BLK	2		
7	COPER	W30MM*L75MM	1		
6	COPER	W13MM*L30MM	1		
5	PVC	45P PVC BLACK OVERMOLD	80g		
4	PE	LLDPE 500026 6201 INSIDE MOLDING	30g		
3	CONN	DVI18+1 MALE PIN G/F ,SHELL PLATED G/F, INSULATION BLACK	1	P2	
2	CONN	HDMI A TYPE MALE PIN G/F ,SHELL PLATED G/F, INSULATION BLACK	1	P1	
1	CABLE	UL20276 (28AWG (1/0.32CUAD) *IP+D+EA+AL/MY) *AP+28AWG (1/0.32CUAD) *IP+ 28AWG (1/0.32CU) X3C+AEM(16/8/0.12AM) OD7.3 BLACK	1	10M	
NO.	PART NO.	DESCRIPTION		QTY	UNIT/REF
BILL OF MATERIAL					

2. Cable test condition :

Open / Short : 100%

Insulation resistance : 5M ohms

Contact resistance : 2 ohm

Hipot : DC 300V / 1 sec

3. Each pcs with PE polybag.

A	INITIAL RELEASE	2017/4/20
REVCEN#	DESCRIPTION	DATE
<b>Cnc Tech, LLC</b>		
DRAWN	DATE	
EDWIN LA	2/28/17	
CHECKED	CUSTOMER P/N:	REV
Win C	741-20010-01000	A
APPROVAL	CUSTOMER:	
	2/28/17	
TITLE		
HDMI M TO DVI18+1 M CABLE		
DWN NO.	CUSTOMER P/N:	REV
741-20010-01000		A
SHEET 1 OF 1		