

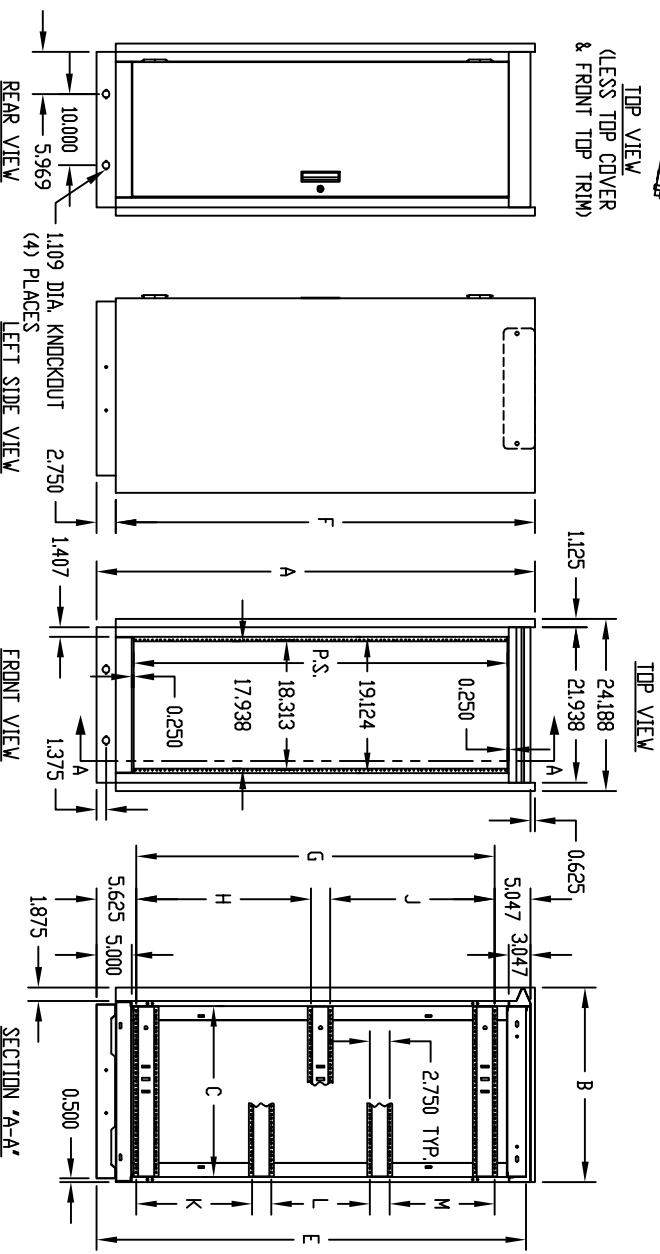
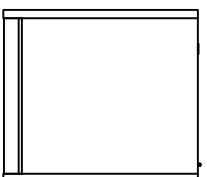
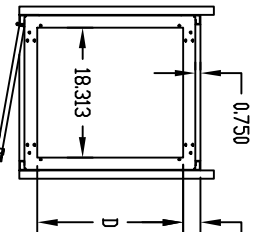
PART NAME SERIES 2000 UPRIGHT CABINET RACK

PART No. E-2000 TD E-2015

REV. DATE 1-2-02

**FINISH:**  
 FRAME ASSEMBLY, SIDES,  
 DOOR & TOP COVER \_\_\_\_\_ GRAY TEXTURE DR  
 ROYAL BLUE TEXTURE  
 PANEL MOUNTING RAILS \_\_\_\_\_ SMOOTH BLACK  
 FRONT TOP TRIM \_\_\_\_\_ METALLIC GRAY

**MATERIAL:**  
 PANEL MOUNTING RAILS \_\_\_\_\_ 12 GA. STEEL  
 FRAME TOP, BASE ASSEMBLY,  
 FILLERS & VERTICAL RAILS \_\_\_\_\_ 14 GA. STEEL  
 RAIL SUPPORTS \_\_\_\_\_ 16 GA. STEEL  
 TOP COVER & SIDES \_\_\_\_\_ 18 GA. STEEL  
 DOOR & FRONT TOP TRIM \_\_\_\_\_ 20 GA. STEEL

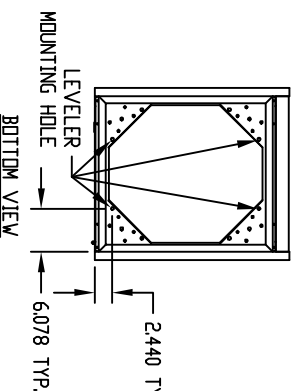


PANEL MOUNTING RAILS (FRONT & REAR)  
 ARE TAPPED #10-32 ON E.I.A. UNIVERSAL  
 SPACING AND ARE FULLY ADJUSTABLE.

BOTTOM PIERCED FOR MOUNTING RC-7758 CASTERS.

LOAD RATING: 1200 LBS. MAX.

\* DISCONTINUED



| PART No. | P.S.   | A      | B      | C      | D      | E      | F      | G      | H      | J      | K      | L      | M      |
|----------|--------|--------|--------|--------|--------|--------|--------|--------|--------|--------|--------|--------|--------|
| E-2000   | 21.000 | 30.250 | 23.875 | 20.500 | 17.000 | 29.000 | 27.500 | 18.937 | —      | —      | —      | —      | —      |
| * E-2001 | 31.500 | 40.750 | —      | —      | —      | 39.500 | 38.000 | 29.437 | —      | —      | —      | —      | —      |
| * E-2002 | 35.000 | 44.250 | —      | —      | —      | 43.000 | 41.500 | 32.937 | —      | —      | —      | —      | —      |
| E-2003   | 42.000 | 51.250 | —      | —      | —      | 50.000 | 48.500 | —      | 19.281 | 17.906 | —      | —      | —      |
| E-2004   | 52.500 | 61.750 | —      | —      | —      | 60.500 | 59.000 | —      | 24.531 | 23.156 | —      | —      | —      |
| E-2005   | 61.250 | 70.500 | —      | —      | —      | 69.250 | 67.750 | —      | 28.906 | 27.531 | —      | —      | —      |
| E-2006   | 70.000 | 79.250 | —      | —      | —      | 78.000 | 76.500 | —      | 33.281 | 31.906 | —      | —      | —      |
| E-2007   | 78.750 | 88.000 | 23.875 | 20.500 | 17.000 | 86.750 | 85.250 | —      | —      | —      | 25.125 | 22.312 | 23.750 |
| E-2008   | 21.000 | 30.250 | 27.375 | 24.000 | 20.500 | 29.000 | 27.500 | 18.937 | —      | —      | —      | —      | —      |
| * E-2009 | 31.500 | 40.750 | —      | —      | —      | 39.500 | 38.000 | 29.437 | —      | —      | —      | —      | —      |
| * E-2010 | 35.000 | 44.250 | —      | —      | —      | 43.000 | 41.500 | 32.937 | —      | —      | —      | —      | —      |
| E-2011   | 42.000 | 51.250 | —      | —      | —      | 50.000 | 48.500 | —      | 19.281 | 17.906 | —      | —      | —      |
| E-2012   | 52.500 | 61.750 | —      | —      | —      | 60.500 | 59.000 | —      | 24.531 | 23.156 | —      | —      | —      |
| E-2013   | 61.250 | 70.500 | —      | —      | —      | 69.250 | 67.750 | —      | 28.906 | 27.531 | —      | —      | —      |
| E-2014   | 70.000 | 79.250 | —      | —      | —      | 78.000 | 76.500 | —      | 33.281 | 31.906 | —      | —      | —      |
| E-2015   | 78.750 | 88.000 | 27.375 | 24.000 | 20.500 | 86.750 | 85.250 | —      | —      | —      | 25.125 | 22.312 | 23.750 |