

IDA16-M

~40° medium beam

TECHNICAL SPECIFICATIONS:

Dimensions	49.3 x 49.5 mm
Height	6 mm
Fastening	clips
ROHS compliant	yes ⓘ

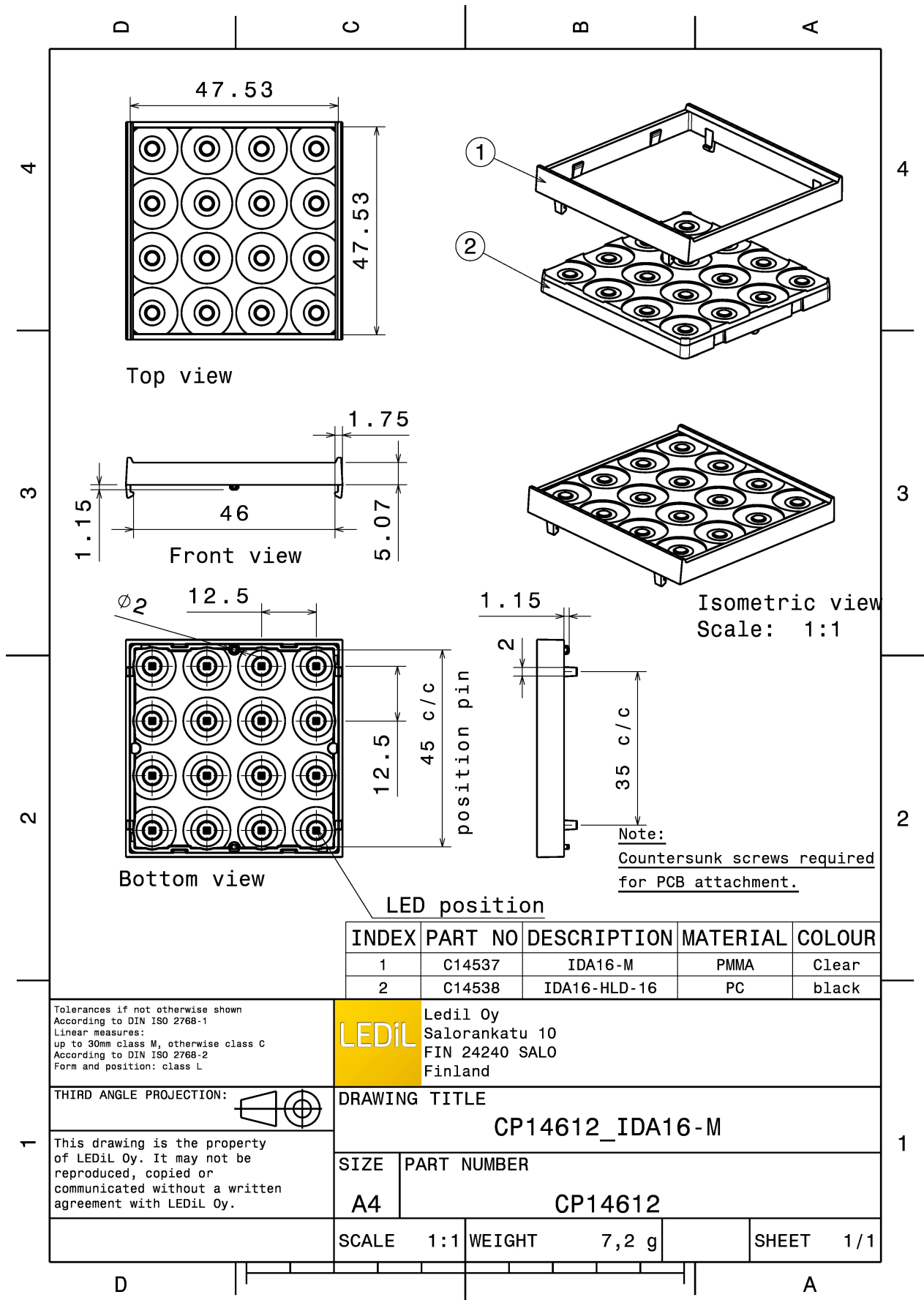
MATERIAL SPECIFICATIONS:

Component	Type	Material	Colour	Finish
IDA16-M	Multi-lens	PMMA	clear	
IDA16-HLD-16	Holder	PC	black	

ORDERING INFORMATION:

Component		Qty in box	MOQ	MPQ	Box weight (kg)
CP14612_IDA16-M	Multi-lens	756	28	28	8.1
» Box size: 480 x 280 x 300 mm					



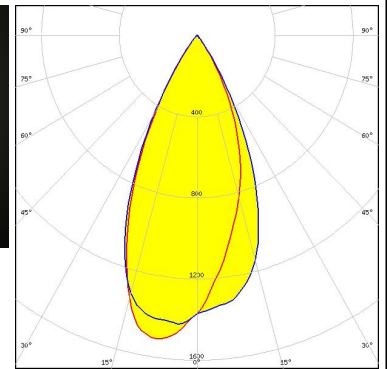
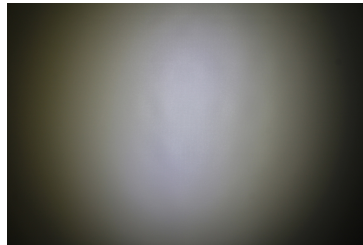


See also our general installation guide: www.ledil.com/installation_guide

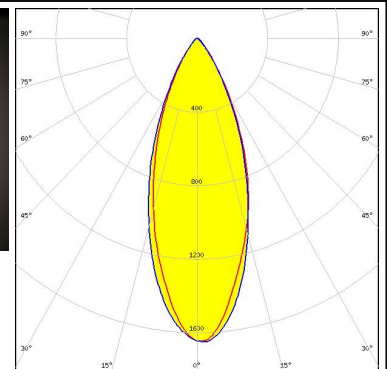
PHOTOMETRIC DATA (MEASURED):



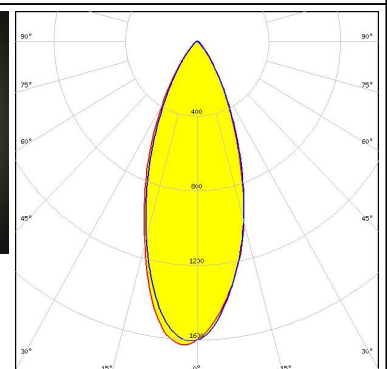
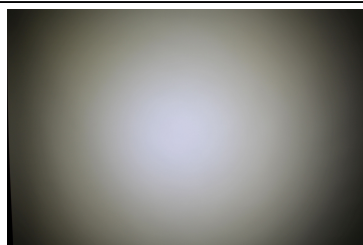
LED NF2x757G
 FWHM / FWTM 49.0° / 82.0°
 Efficiency 91 %
 Peak intensity 1.3 cd/m
 LEDs/each optic 1
 Light colour White
 Required components:



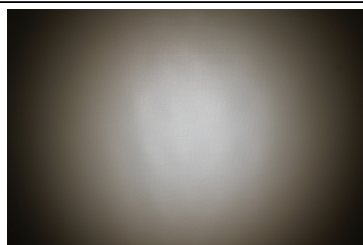
LED Duris S5 (Single chip)
 FWHM / FWTM 38.0° / 72.0°
 Efficiency 88 %
 Peak intensity 1.7 cd/m
 LEDs/each optic 1
 Light colour White
 Required components:



LED LM231 A/B
 FWHM / FWTM 39.0° / 73.0°
 Efficiency 89 %
 Peak intensity 1.6 cd/m
 LEDs/each optic 1
 Light colour White
 Required components:



LED LM301A
 FWHM / FWTM 41.0° / 75.0°
 Efficiency 87 %
 Peak intensity 1.6 cd/m
 LEDs/each optic 1
 Light colour White
 Required components:



PHOTOMETRIC DATA (MEASURED):

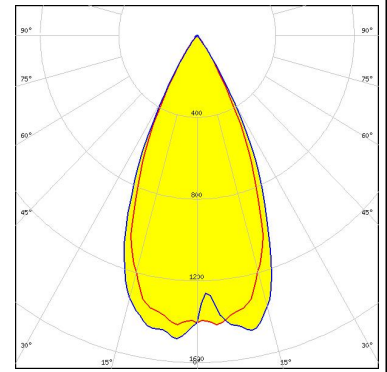


PHOTOMETRIC DATA (SIMULATED):

OSRAM

Opto Semiconductors

LED Duris S5 (2 chip)
 FWHM / FWTM 40.0° / 68.0 + 66.0°
 Efficiency 92 %
 Peak intensity 1.5 cd/lm
 LEDs/each optic 1
 Light colour White
 Required components:

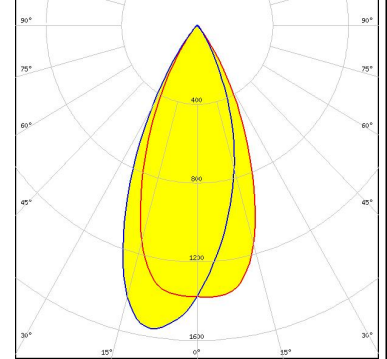


OSRAM

Opto Semiconductors

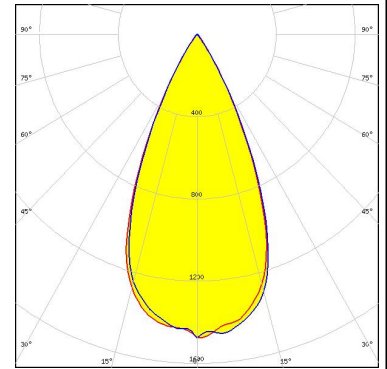
LED Duris S5 (Single chip)
 FWHM / FWTM 42.0° / 69.0°
 Efficiency 86 %
 Peak intensity 1.6 cd/lm
 LEDs/each optic 1
 Light colour White
 Required components:

Protective plate, glass



SAMSUNG

LED LH181B
 FWHM / FWTM 47.0° / 67.0°
 Efficiency 91 %
 Peak intensity 1.5 cd/lm
 LEDs/each optic 1
 Light colour White
 Required components:



GENERAL INFORMATION:

NOTE: The typical beam angle will be changed by different color, chip size and chip position tolerance. The typical total beam angle is the full angle measured where the luminous intensity is half of the peak value.

MATERIALS:

As part of our continuous research and improvement processes, and to ensure the best possible quality and availability of our products, LEDiL reserves the right to change material grades without notice.

PRODUCT DATA USER AGREEMENT AND DISCLAIMER:

The measured data in the provided downloadable LEDiL Product Datasheets and Mechanical 2D-Drawings is rounded and provided as reference for planning. LEDiL Oy's optical specifications have been verified by conducting performance testing of the products in accordance with the company's quality system. The reported data are averaged results of multiple measurements with typical variation. LEDiL Oy reserves the right to without prior notification make changes and improvements to its products.

LEDiL Oy assumes neither warranty, nor guarantee nor any other liability of any kind for the contents and correctness of the provided data. The provided data has been generated with highest diligence but the provided data may in reality not represent the complete possible variation range of all intrinsic parameters. Therefore, in certain cases a deviation from the provided data could occur.

LEDiL Oy reserves the right to undertake technical changes of its products without further notification which could lead to changes in the provided data. LEDiL Oy assumes no liability of any kind for the possible deviation from any provided data or any other damage resulting from the usage of the provided data.

The user agrees to this disclaimer and user agreement with the download or usage of the provided files.

LEDiL Oy

Joensuunkatu 13
FI-24240 SALO
Finland

LEDiL Inc.

228 West Page Street
Suite D
Sycamore IL 60178
USA

Ledil Optics Technology (Shenzhen) Co., Ltd.

405 , Block B
Casic Motor Building
Shenzhen 518057
P.R.CHINA

Local sales and technical support

[www.ledil.com/
where_to_buy](http://www.ledil.com/where_to_buy)

Shipping locations

Salo, Finland
Hong Kong, China

Distribution Partners

[www.ledil.com/
where_to_buy](http://www.ledil.com/where_to_buy)