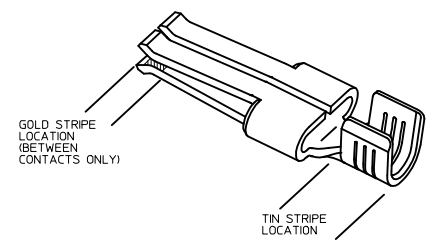


PART NUMBER	PLATING	RECOMMENDED WIRE SIZE	DIM 'A' HEIGHT	DIM 'B' WIDTH	DIM 'C' GAP	DIM 'D' TIPS	RECOMMENDED CRIMP APPLICATOR	MATING CONTACT	PACKAGE SIZE
44262-4334	30μ * GOLD STRIPE OVER 50μ * NICKEL OVERALL WITH 80-130μ * SELECT TIN	8 AWG (2) 12 AWG	7.42±0.5 .292±.020	5.84±0.5 .230±.020			63832-6300	44262-6*** SEE MOLEX DRAWING SD-44262-026 OR WITH BLADES 0.64/.025 THICK X 6.10/.240 MIN WIDE	1800 PARTS/ REEL
44262-4332	30μ * GOLD STRIPE OVER 50μ * NICKEL OVERALL WITH 80-130μ * SELECT TIN	10-12 AWG (2) 14 AWG	5.97±0.5 .235±.020	5.33±0.5 .210±.020	0.10/.004	2.54/.100 REF	63832-6000		2500 PARTS/ REEL
44262-4336	30μ * GOLD STRIPE OVER 50μ * NICKEL OVERALL WITH 80-130μ * SELECT TIN	14-16 AWG (2) 16 AWG (2) 18 AWG	5.20±0.5 .205±.020	5.33±0.5 .210±.020			63832-6100		
44262-4434	30μ * GOLD STRIPE OVER 50μ * NICKEL OVERALL WITH 80-130μ * SELECT TIN	8 AWG (2) 12 AWG	7.42±0.5 .292±.020	5.84±0.5 .230±.020			63832-6300	FOR USE WITH BLADES 1.27/.050 THICK X 6.10/.240 MIN WIDE	1800 PARTS/ REEL
44262-4432	30μ * GOLD STRIPE OVER 50μ * NICKEL OVERALL WITH 80-130μ * SELECT TIN	10-12 AWG (2) 14 AWG	5.97±0.5 .235±.020	5.33±0.5 .210±.020	0.64/.025	3.07/.121 REF	63832-6000		2500 PARTS/ REEL
44262-4436	30μ * GOLD STRIPE OVER 50μ * NICKEL OVERALL WITH 80-130μ * SELECT TIN	14-16 AWG (2) 16 AWG (2) 18 AWG	5.20±0.5 .205±.020	5.33±0.5 .210±.020			63832-6100		
44262-4534	30μ * GOLD STRIPE OVER 50μ * NICKEL OVERALL WITH 80-130μ * SELECT TIN	8 AWG (2) 12 AWG	7.42±0.5 .292±.020	5.84±0.5 .230±.020			63832-6300	FOR USE WITH BLADES 0.81/.032 THICK X 6.10/.240 MIN WIDE RECOMMENDED FOR 6 CIRCUITS AND ABOVE	1800 PARTS/ REEL
44262-4532	30μ * GOLD STRIPE OVER 50μ * NICKEL OVERALL WITH 80-130μ * SELECT TIN	10-12 AWG (2) 14 AWG	5.97±0.5 .235±.020	5.33±0.5 .210±.020	0.30/.012	2.74/.108 REF	63832-6000		2500 PARTS/ REEL
44262-4536	30μ * GOLD STRIPE OVER 50μ * NICKEL OVERALL WITH 80-130μ * SELECT TIN	14-16 AWG (2) 16 AWG (2) 18 AWG	5.20±0.5 .205±.020	5.33±0.5 .210±.020			63832-6100		
44262-4634	30μ * GOLD STRIPE OVER 50μ * NICKEL OVERALL WITH 80-130μ * SELECT TIN	8 AWG (2) 12 AWG	7.42±0.5 .292±.020	5.84±0.5 .230±.020			63832-6300	FOR USE WITH BLADES 1.27/.050 THICK X 6.10/.240 MIN WIDE RECOMMENDED FOR 6 CIRCUITS AND ABOVE	1800 PARTS/ REEL
44262-4632	30μ * GOLD STRIPE OVER 50μ * NICKEL OVERALL WITH 80-130μ * SELECT TIN	10-12 AWG (2) 14 AWG	5.97±0.5 .235±.020	5.33±0.5 .210±.020	0.89/.035	3.33/.131 REF	63832-6000		2500 PARTS/ REEL
44262-4636	30μ * GOLD STRIPE OVER 50μ * NICKEL OVERALL WITH 80-130μ * SELECT TIN	14-16 AWG (2) 16 AWG (2) 18 AWG	5.20±0.5 .205±.020	5.33±0.5 .210±.020			63832-6100		

- NOTES:
1. MATERIAL: COPPER ALLOY .032 IN THICK
  2. FINISH: PER MOLEX PLATING SPECIFICATION ES-88 - SEE CHART
  3. FOR CRIMP APPLICATOR SEE CHART
  4. FOR CRIMP TOOLING CONTACT MOLEX OR VISIT THE MOLEX WEBSITE AT: WWW.MOLEX.COM
  5. STANDARD PACKAGE SIZE: SEE CHART
  6. SEE PRODUCT SPECIFICATION: PS-44262-001 FOR MORE INFORMATION
  7. PARTS ARE RoHS COMPLIANT
  8. FOR MATING CONTACT: SEE CHART
  9. FOR CRIMP SET UP INFORMATION SEE MOLEX APPLICATION SPECIFICATION DOCUMENT:  
8 AWG - ATS-638326300  
10/12 AWG - ATS-638326000  
14/16 AWG - ATS-638326100



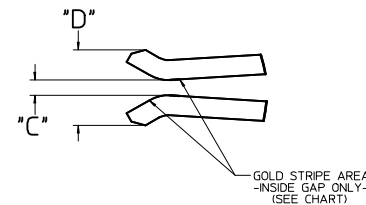
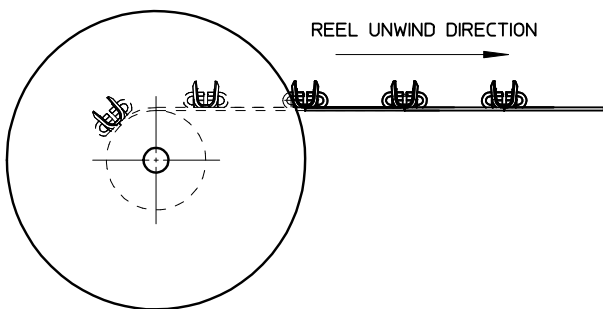
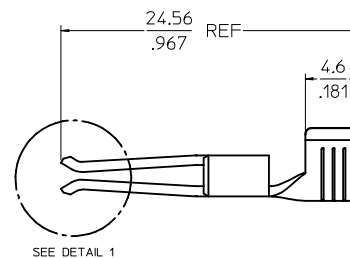
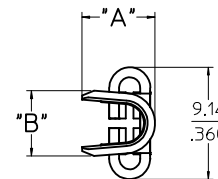
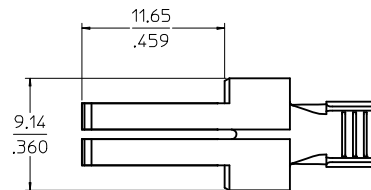
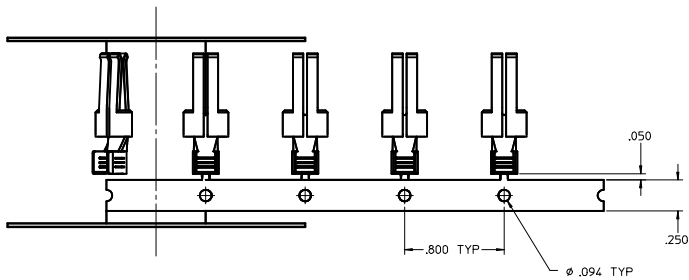
**REMOVE THRU DE PARTS CHART**

REV: 06  
 IEC NO: UCP2016-1882  
 DRAWN: SCHWABER 2015/07/22  
 CHKD:  
 APPR: BPS/SZCZOR 2015/11/30

QUALITY SYMBOLS	GENERAL TOLERANCES (UNLESS SPECIFIED)		DIMENSION STYLE		SCALE	DESIGN UNITS	THIRD ANGLE PROJECTION
	mm	INCH	MM/IN	DATE			
▽=0	4 PLACES ±.010	±.005	BKOSTIC	2006/11/13	1:1	INCH	
▽=0	3 PLACES ±.010	±.010	BKOSTIC	2006/11/13			
▽=0	2 PLACES ±0.25	±.010	BKOSTIC	2006/11/13			
▽=0	1 PLACE ±0.25	±.010	BKOSTIC	2006/11/13			
	ANGULAR ±1/2°		APATEL		2006/11/14		
DRAFT WHERE APPLICABLE MUST REMAIN WITHIN DIMENSIONS			MATERIAL NO.		DOCUMENT NO.		
			SEE CHART		SD-44262-100		
			SIZE D		THIS DRAWING CONTAINS INFORMATION THAT IS PROPRIETARY TO MOLEX INCORPORATED AND SHOULD NOT BE USED WITHOUT WRITTEN PERMISSION		

SHEET NO. 1 OF 2

20 19 18 17 16 15 14 13 12 11 10 9 8 7 6 5 4 3 2 1



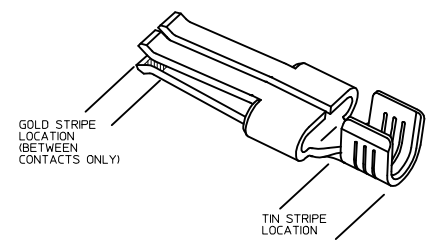
DETAIL 1  
SCALE 10:1

<b>SEE SHEET 1</b> IEC NO. UCP2016-1882 DRAWN: SCHAEFER 2015/07/22 CHKD: APPR: BPI/SZCZOR 2015/11/30	QUALITY SYMBOLS	GENERAL TOLERANCES (UNLESS SPECIFIED)	DIMENSION STYLE	SCALE	DESIGN UNITS	THIRD ANGLE PROJECTION
	∇=0 ∇=0 ∇=0	4 PLACES ± .010 3 PLACES ± .010 2 PLACES ± 0.25 ± .010 1 PLACE ± 0.25 ± .010 ANGULAR ± 1/2°	MM/IN	5:1	INCH	DRAWN BY BKOSTIC DATE 2006/11/13 CHECKED BY BKOSTIC DATE 2006/11/13 APPROVED BY APATEL DATE 2006/11/14
DRAFT WHERE APPLICABLE MUST REMAIN WITHIN DIMENSIONS	MATERIAL NO. SEE CHART SIZE D	MOLEX INCORPORATED DOCUMENT NO. SD-44262-100		SHEET NO. 2 OF 2		

19 18 17 16 15 14 13 12 11 10 9 8 7 6 5 4 3 2 1

PART NUMBER	PLATING	RECOMMENDED WIRE SIZE	DIM 'A' HEIGHT	DIM 'B' WIDTH	DIM 'C' GAP	DIM 'D' TIPS	RECOMMENDED CRIMP APPLICATOR	MATING CONTACT	PACKAGE SIZE
44262-4334	30μ * GOLD STRIPE OVER 50μ * NICKEL OVERALL WITH 80-130μ * SELECT TIN	8 AWG (2) 12 AWG	7.42±0.5 .292±.020	5.84±0.5 .230±.020			63832-6300	44262-6*** SEE MOLEX DRAWING SD-44262-026 OR WITH BLADES 0.64/.025 THICK X 6.10/.240 MIN WIDE	1800 PARTS/ REEL
44262-4332	30μ * GOLD STRIPE OVER 50μ * NICKEL OVERALL WITH 80-130μ * SELECT TIN	10-12 AWG (2) 14 AWG	5.97±0.5 .235±.020	5.33±0.5 .210±.020	0.10/.004	2.54/.100 REF	63832-6000		2500 PARTS/ REEL
44262-4336	30μ * GOLD STRIPE OVER 50μ * NICKEL OVERALL WITH 80-130μ * SELECT TIN	14-16 AWG (2) 16 AWG (2) 18 AWG	5.20±0.5 .205±.020	5.33±0.5 .210±.020			63832-6100		
44262-4434	30μ * GOLD STRIPE OVER 50μ * NICKEL OVERALL WITH 80-130μ * SELECT TIN	8 AWG (2) 12 AWG	7.42±0.5 .292±.020	5.84±0.5 .230±.020			63832-6300	FOR USE WITH BLADES 1.27/.050 THICK X 6.10/.240 MIN WIDE	1800 PARTS/ REEL
44262-4432	30μ * GOLD STRIPE OVER 50μ * NICKEL OVERALL WITH 80-130μ * SELECT TIN	10-12 AWG (2) 14 AWG	5.97±0.5 .235±.020	5.33±0.5 .210±.020	0.64/.025	3.07/.121 REF	63832-6000		2500 PARTS/ REEL
44262-4436	30μ * GOLD STRIPE OVER 50μ * NICKEL OVERALL WITH 80-130μ * SELECT TIN	14-16 AWG (2) 16 AWG (2) 18 AWG	5.20±0.5 .205±.020	5.33±0.5 .210±.020			63832-6100		
44262-4534	30μ * GOLD STRIPE OVER 50μ * NICKEL OVERALL WITH 80-130μ * SELECT TIN	8 AWG (2) 12 AWG	7.42±0.5 .292±.020	5.84±0.5 .230±.020			63832-6300	FOR USE WITH BLADES 0.81/.032 THICK X 6.10/.240 MIN WIDE RECOMMENDED FOR 6 CIRCUITS AND ABOVE	1800 PARTS/ REEL
44262-4532	30μ * GOLD STRIPE OVER 50μ * NICKEL OVERALL WITH 80-130μ * SELECT TIN	10-12 AWG (2) 14 AWG	5.97±0.5 .235±.020	5.33±0.5 .210±.020	0.30/.012	2.74/.108 REF	63832-6000		2500 PARTS/ REEL
44262-4536	30μ * GOLD STRIPE OVER 50μ * NICKEL OVERALL WITH 80-130μ * SELECT TIN	14-16 AWG (2) 16 AWG (2) 18 AWG	5.20±0.5 .205±.020	5.33±0.5 .210±.020			63832-6100		
44262-4634	30μ * GOLD STRIPE OVER 50μ * NICKEL OVERALL WITH 80-130μ * SELECT TIN	8 AWG (2) 12 AWG	7.42±0.5 .292±.020	5.84±0.5 .230±.020			63832-6300	FOR USE WITH BLADES 1.27/.050 THICK X 6.10/.240 MIN WIDE RECOMMENDED FOR 6 CIRCUITS AND ABOVE	1800 PARTS/ REEL
44262-4632	30μ * GOLD STRIPE OVER 50μ * NICKEL OVERALL WITH 80-130μ * SELECT TIN	10-12 AWG (2) 14 AWG	5.97±0.5 .235±.020	5.33±0.5 .210±.020	0.89/.035	3.33/.131 REF	63832-6000		2500 PARTS/ REEL
44262-4636	30μ * GOLD STRIPE OVER 50μ * NICKEL OVERALL WITH 80-130μ * SELECT TIN	14-16 AWG (2) 16 AWG (2) 18 AWG	5.20±0.5 .205±.020	5.33±0.5 .210±.020			63832-6100		

- NOTES:
1. MATERIAL: COPPER ALLOY .032 IN THICK
  2. FINISH: PER MOLEX PLATING SPECIFICATION ES-88 - SEE CHART
  3. FOR CRIMP APPLICATOR SEE CHART
  4. FOR CRIMP TOOLING CONTACT MOLEX OR VISIT THE MOLEX WEBSITE AT: WWW.MOLEX.COM
  5. STANDARD PACKAGE SIZE: SEE CHART
  6. SEE PRODUCT SPECIFICATION: PS-44262-001 FOR MORE INFORMATION
  7. PARTS ARE RoHS COMPLIANT
  8. FOR MATING CONTACT: SEE CHART
  9. FOR CRIMP SET UP INFORMATION SEE MOLEX APPLICATION SPECIFICATION DOCUMENT:  
8 AWG - ATS-638326300  
10/12 AWG - ATS-638326000  
14/16 AWG - ATS-638326100

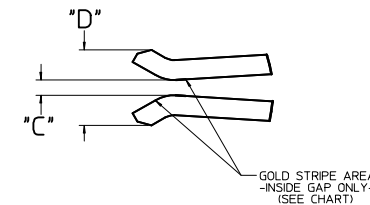
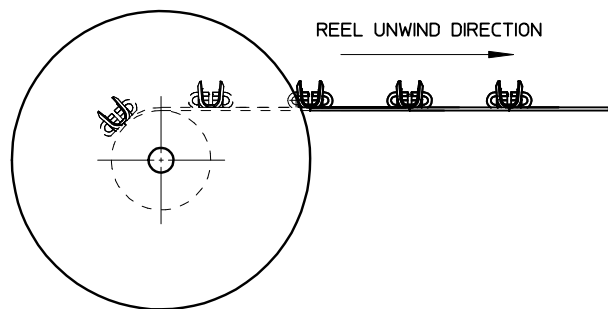
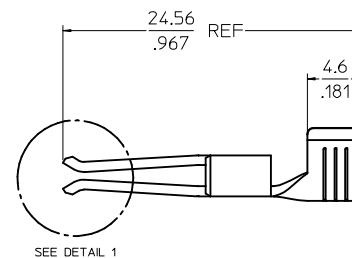
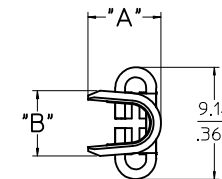
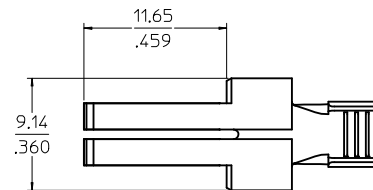
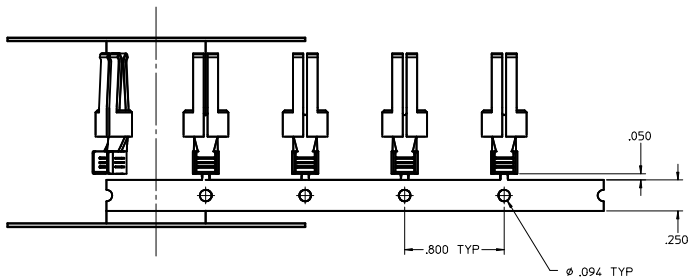


**REMOVE THRU DE PARTS CHART**

REV: 06  
 ELEC NO: UCP2016-1882  
 DRAWN: SCHWABER 2015/07/22  
 CHKD:  
 APPR: BPS/LCZOR 2015/11/20

QUALITY SYMBOLS	GENERAL TOLERANCES (UNLESS SPECIFIED)		DIMENSION STYLE		SCALE	DESIGN UNITS	THIRD ANGLE PROJECTION
	mm	INCH	MM/IN				
▽=0	4 PLACES ±.005	±.005	BKOSTIC	DATE 2006/11/13	1:1	INCH	
▽=0	3 PLACES ±.010	±.010	BKOSTIC	DATE 2006/11/13			
▽=0	2 PLACES ±0.25	±.010	BKOSTIC	DATE 2006/11/13			
▽=0	1 PLACE ±0.25	±.010	BKOSTIC	DATE 2006/11/14			
	ANGULAR ±1/2°		APATEL				
DRAFT WHERE APPLICABLE MUST REMAIN WITHIN DIMENSIONS			MATERIAL NO. SEE CHART		DOCUMENT NO. SD-44262-100		
			SIZE D		SHEET NO. 1 OF 2		
THIS DRAWING CONTAINS INFORMATION THAT IS PROPRIETARY TO MOLEX INCORPORATED AND SHOULD NOT BE USED WITHOUT WRITTEN PERMISSION							

20 19 18 17 16 15 14 13 12 11 10 9 8 7 6 5 4 3 2 1



DETAIL 1  
SCALE 10:1

<b>SEE SHEET 1</b> IEC NO. UCP2016-1882 DRAWN: SCHAEFER 2015/07/22 CHKD: APPR: BPI/SZCZOR 2015/11/30 REV: D0	QUALITY SYMBOLS	GENERAL TOLERANCES (UNLESS SPECIFIED)	DIMENSION STYLE	SCALE	DESIGN UNITS	THIRD ANGLE PROJECTION
	▽=0	4 PLACES ± .010	MM/IN	5:1	INCH	☉
	▽=0	3 PLACES ± .010				
	▽=0	2 PLACES ± 0.25				
		1 PLACE ± 0.25				
		ANGULAR ±1/2°				
		DRAFT WHERE APPLICABLE MUST REMAIN WITHIN DIMENSIONS				
			DRAWN BY	DATE	TITLE	
			BKOSTIC	2006/11/13	TERMINAL - RECEPTACLE POWER CONTACT	
			CHECKED BY	DATE		
			BKOSTIC	2006/11/13		
			APPROVED BY	DATE		
			APATEL	2006/11/14		
			MATERIAL NO.	DOCUMENT NO.		
			SEE CHART		MOLEX INCORPORATED	
					SD-44262-100	
						SHEET NO. 2 OF 2

19 18 17 16 15 14 13 12 11 10 9 8 7 6 5 4 3 2 1