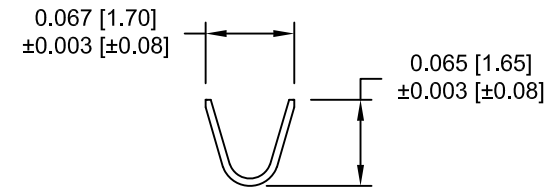
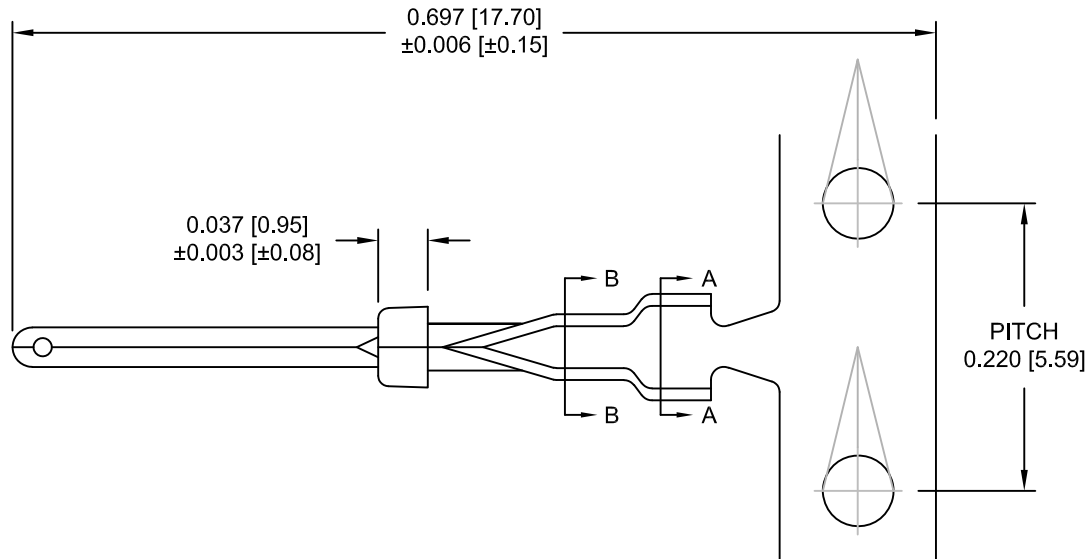


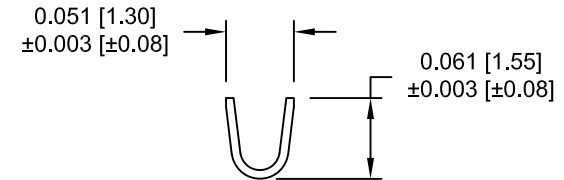
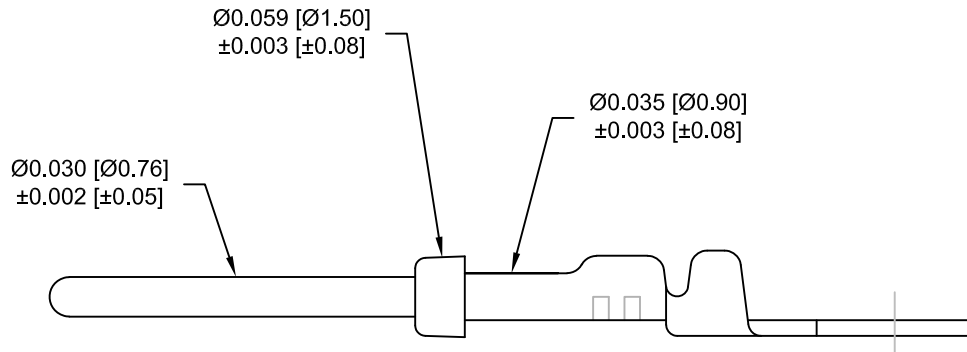
**NOTES:**

MATERIAL: PHOSPHOR BRONZE  
 PLATING: 10u" GOLD OVER 50u" NICKEL  
 NICKEL ON WIRE CRIMP AREA

WIRE SIZE: 24-26 AWG  
 CONTACT RESISTANCE: 20 mOHMS INITIAL  
 CONTACT AMPERAGE RATING: 3 AMPS



SECTION A - A



SECTION B - B

**180-Y01-170L001**

FOR CLARITY  
 HIDDEN LINES  
 NOT SHOWN

SERIES \_\_\_\_\_  
 TYPE \_\_\_\_\_  
 0 = REEL (10,000 per reel)  
 1 = LOOSE (500 per bag)  
 GENDER \_\_\_\_\_  
 1 = MALE

**RoHS COMPLIANT**

UNITS = inch [mm]

**DO NOT SCALE FROM DRAWING**



THESE DRAWINGS AND SPECIFICATIONS ARE THE PROPERTY OF NorComp AND SHALL NOT BE REPRODUCED, COPIED OR USED AS THE BASIS FOR THE MANUFACTURE OR SALE OF APPARATUS WITHOUT WRITTEN PERMISSION.

DRAWN:

J. KADEL

DATE:

09/03/2019

**NorComp**

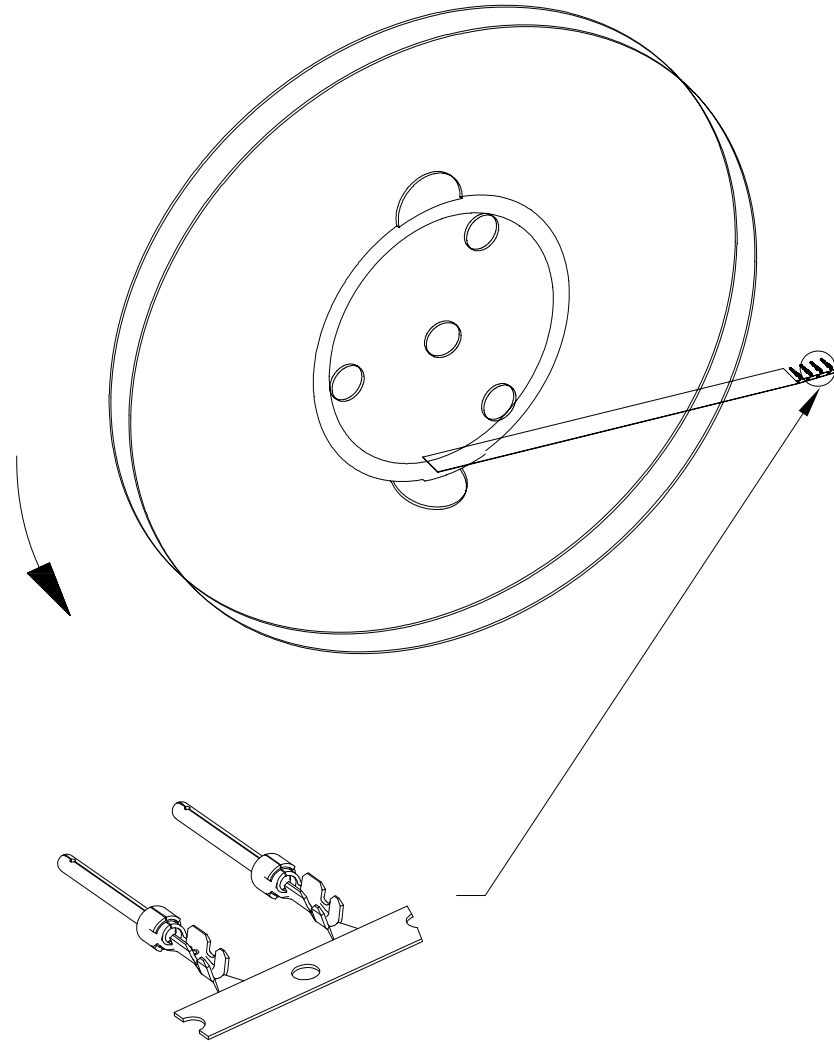
SCALE:  
 NTS

SHEET 1 OF 2

REV 1

DWG NO.

180-Y01-170L001



RoHS COMPLIANT

DO NOT SCALE FROM DRAWING



THESE DRAWINGS AND SPECIFICATIONS ARE THE PROPERTY OF NorComp AND SHALL NOT BE REPRODUCED, COPIED OR USED AS THE BASIS FOR THE MANUFACTURE OR SALE OF APPARATUS WITHOUT WRITTEN PERMISSION.

DRAWN:

J. KADEL

DATE:

09/03/2019

NorComp

SCALE:  
NTS

SHEET OF  
2 2

REV  
1

DWG NO.

180-Y01-170L001