

## Han 108DD-SMC-MI-CRT

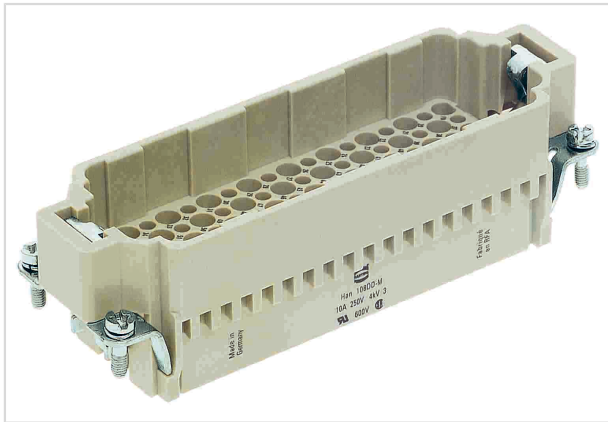


Image is for illustration purposes only. Please refer to product description.

Part number	09 16 108 3001
Specification	Han 108DD-SMC-MI-CRT
HARTING eCatalogue	<a href="https://b2b.harting.com/09161083001">https://b2b.harting.com/09161083001</a>

### Identification

Category	Inserts
Series	Han DD®

### Version

Termination method	Crimp termination
Gender	Male
Size	24 B
Number of contacts	108
PE contact	Yes
Details	Please order crimp contacts separately.

### Technical characteristics

Conductor cross-section	0.14 ... 2.5 mm <sup>2</sup>
Rated current	10 A
Rated voltage	250 V
Rated impulse voltage	4 kV
Pollution degree	3
Rated voltage acc. to UL	600 V
Rated voltage acc. to CSA	600 V
Insulation resistance	>10 <sup>10</sup> Ω
Limiting temperature	-40 ... +125 °C
Mating cycles	≥500



Pushing Performance

## Material properties

Colour (insert)	RAL 7032 (pebble grey)
Material flammability class acc. to UL 94	V-0
RoHS	compliant
ELV status	compliant
China RoHS	e
REACH Annex XVII substances	Not contained
REACH ANNEX XIV substances	Not contained
REACH SVHC substances	Not contained
California Proposition 65 substances	Yes
California Proposition 65 substances	Nickel Lead

## Specifications and approvals

Specifications	EN 60664-1 IEC 61984
Approvals	DNV GL
UL / CSA	UL 1977 ECBT2.E235076 CSA-C22.2 No. 182.3 ECBT8.E235076

## Commercial data

Packaging size	1
Net weight	68 g
Country of origin	Romania
European customs tariff number	85389099
eCl@ss	27440205 Contact insert for industrial connectors