

## Han 24ESS-F w. mech. Relay Contacts

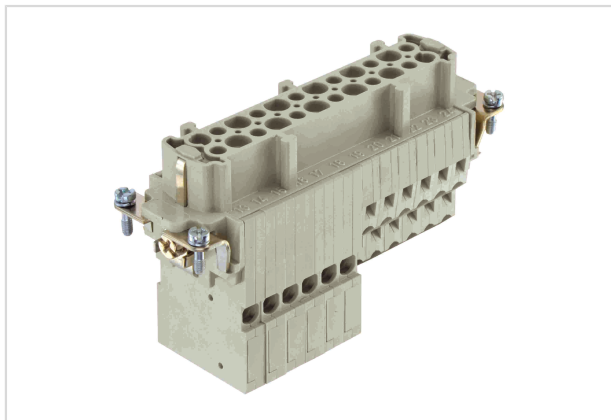


Image is for illustration purposes only. Please refer to product description.

Part number	09 33 024 2738
Specification	Han 24ESS-F w. mech. Relay Contacts
HARTING eCatalogue	<a href="https://b2b.harting.com/09330242738">https://b2b.harting.com/09330242738</a>

### Identification

Category	Inserts
Series	Han <sup>®</sup> ESS
Specification	With 4 relay contacts

### Version

Termination method	Cage-clamp termination
Gender	Female
Size	24 B
Number of contacts	16
PE contact	Yes
Details	for hoods/housings high construction only

### Technical characteristics

Conductor cross-section	0.5 ... 4 mm <sup>2</sup> Relay contacts 0.14 ... 2.5 mm <sup>2</sup>
Conductor cross-section	AWG 26 ... AWG 14
Rated current	16 A
Rated voltage	500 V
Rated impulse voltage	6 kV
Pollution degree	3
Rated voltage acc. to UL	600 V
Rated voltage acc. to CSA	600 V
Insulation resistance	>10 <sup>10</sup> Ω



Pushing Performance

## Technical characteristics

Contact resistance	≤3 mΩ
Stripping length	9 ... 11 mm
Limiting temperature	-40 ... +125 °C
Mating cycles	≥500

## Material properties

Material (insert)	Polycarbonate (PC)
Colour (insert)	RAL 7032 (pebble grey)
Material (contacts)	Copper alloy
Surface (contacts)	Silver plated
Material flammability class acc. to UL 94	V-0
RoHS	compliant
ELV status	compliant with exemption
China RoHS	50
REACH Annex XVII substances	Not contained
REACH ANNEX XIV substances	Not contained
REACH SVHC substances	Not contained
California Proposition 65 substances	Yes
California Proposition 65 substances	Lead

## Specifications and approvals

Specifications	EN 60664-1 IEC 61984
Approvals	DNV GL
UL / CSA	UL 1977 ECBT2.E235076 CSA-C22.2 No. 182.3 ECBT8.E235076

## Commercial data

Packaging size	1
Net weight	189.5 g
Country of origin	Romania
European customs tariff number	85366990
eCl@ss	27440205 Contact insert for industrial connectors