

Han TC350 PE male contact M10 screw

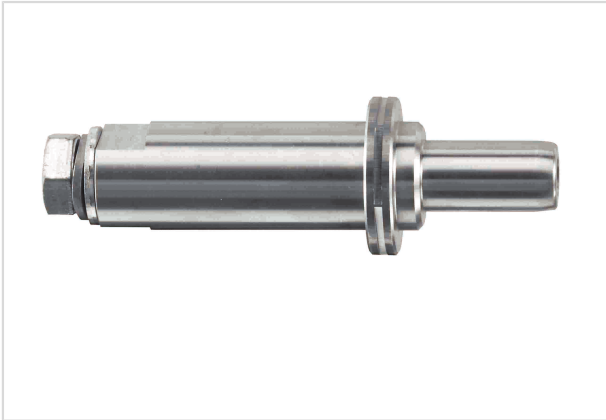


Image is for illustration purposes only. Please refer to product description.

Part number	09 11 000 6158
Specification	Han TC350 PE male contact M10 screw
HARTING eCatalogue	https://b2b.harting.com/09110006158

Identification

Category	Contacts
Series	TC 350
Type of contact	PE contact

Version

Termination method	Screw termination
Gender	Male
Manufacturing process	Turned contacts

Technical characteristics

Conductor cross-section	120 mm ²
Operating current	≤350 A
Contact resistance	≤0.2 mΩ
Tightening torque	14 Nm
Limiting temperature	-40 ... +125 °C
Mating cycles	≥500

Material properties

Material (contacts)	Copper alloy
Surface (contacts)	Silver plated
RoHS	compliant with exemption
RoHS exemptions	6(c): Copper alloy containing up to 4 % lead by weight
ELV status	compliant with exemption



Pushing Performance

Material properties

China RoHS	50
REACH Annex XVII substances	Not contained
REACH ANNEX XIV substances	Not contained
REACH SVHC substances	Yes
REACH SVHC substances	Lead
ECHA SCIP number	b51e5b97-eeb5-438b-8538-f1771d43c17d
California Proposition 65 substances	Yes
California Proposition 65 substances	Nickel Lead

Specifications and approvals

Specifications	EN 60664-1 IEC 61984
----------------	-------------------------

Commercial data

Packaging size	1
Net weight	251 g
Country of origin	Germany
European customs tariff number	85359000
eCl@ss	27440204 Contact for industrial connectors