

PLEASE CHECK WWW.MOLEX.COM FOR LATEST PART INFORMATION

Part Number: [0634452811](#)
Status: **Active**
Overview: [Application Tooling](#)
Description: Anvil

Documents:

[RoHS Certificate of Compliance \(PDF\)](#)

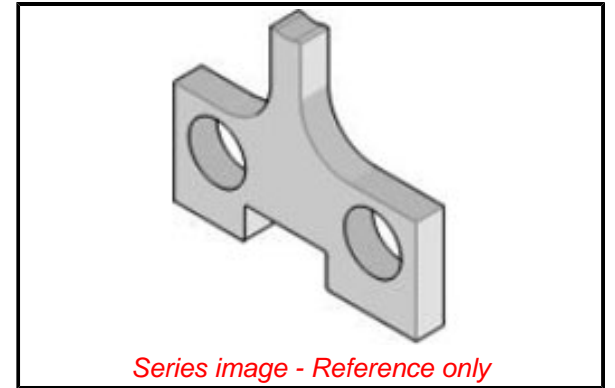
General

| | |
|--------------------------------|---|
| Product Family | Application Tooling |
| Series | 207126 |
| Comments | See Tooling Specification (PDF) Above |
| Function | Cutter |
| Geographic Area | Global |
| Level of Automation | Semi-Automatic |
| More Detailed Tech Information | applicationtooling@molex.com |
| Overview | Application Tooling |
| Product Name | N/A |
| Tool Type | Applicator |
| UPC | 800755129137 |
| Warranty Disclaimer | CAUTION: Molex tooling crimp specifications are valid only when used with Molex terminals and tooling manufactured by Molex and sold by Molex or authorized distributors ("Molex Tooling"). When using tooling other than Molex Tooling with Molex specific connector systems listed in our ATS documents, the Molex tooling qualification does not apply and the responsibility for full qualification of the connector system is that of the customer. Molex accepts no liability for connector performance or tooling support where tooling other than Molex Tooling is used or where Molex Tooling is modified. |

Material Info

Reference - Drawing Numbers
 Application Tooling Documents

ATS-STANDARD-PARTS-001



EU ELV

Not Relevant

EU RoHS

Compliant

REACH SVHC

Not Contained Per -
 D(2021)10043-DC (17
 Jan 2022)

Halogen-Free

Status

Not Relevant

For more information, please visit [Contact US](#)

China ROHS

Not Relevant

ELV

Not Relevant

RoHS Phthalates

Not Contained

Search Parts in this Series

[207126 Series](#)

Use With

[638503000](#) , [638503070](#) , [638557000](#) ,
[638557070](#) , [638603000](#) , [638603070](#) ,
[638657000](#) , [638657070](#)

PLEASE CHECK WWW.MOLEX.COM FOR LATEST PART INFORMATION